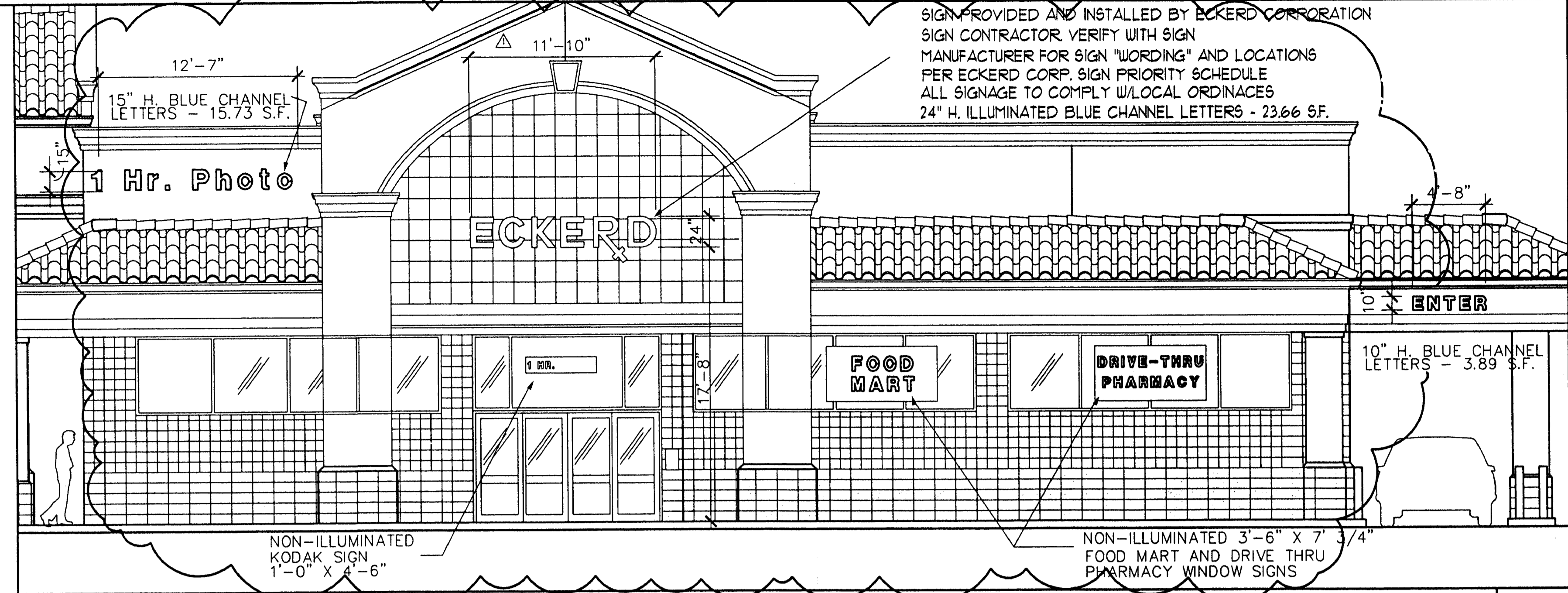


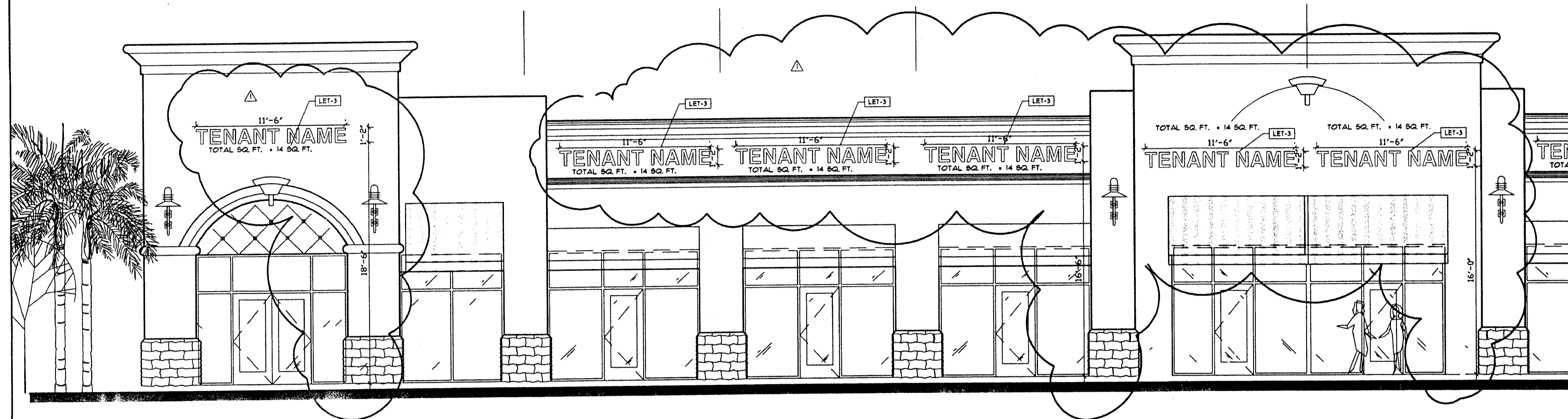
RETAIL "C" ECKERD EAST ELEVATION

SCALE: 3/8" = 1'-0" 05



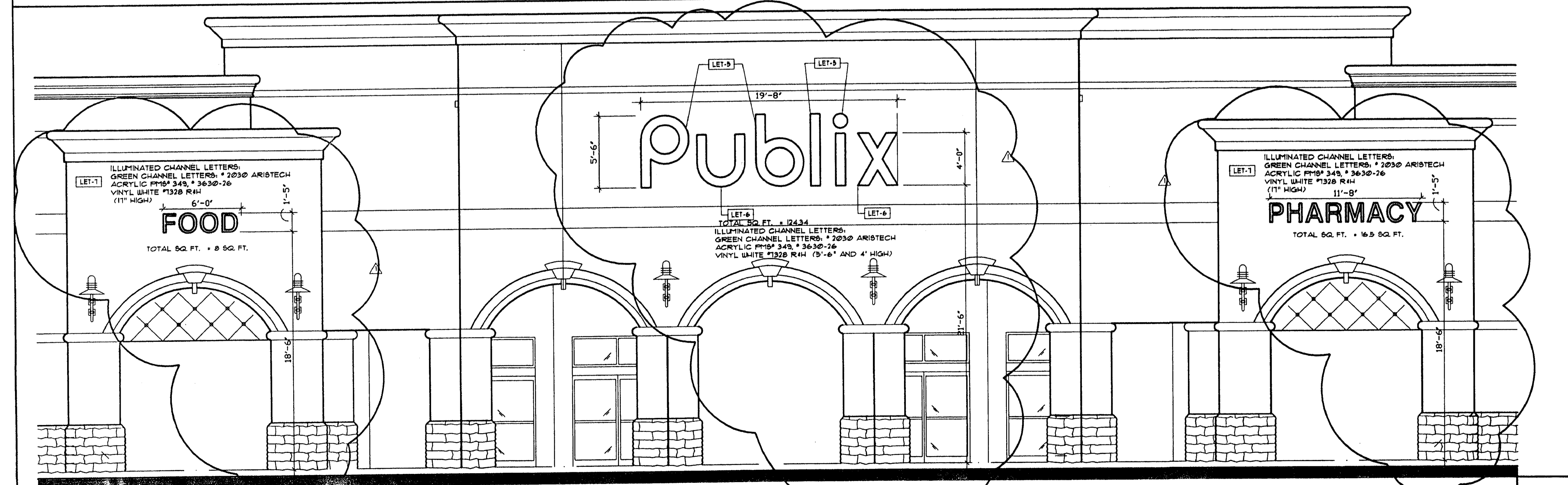
RETAIL "C" ECKERD NORTH ELEVATION

SCALE: 3/8" = 1'-0" 02



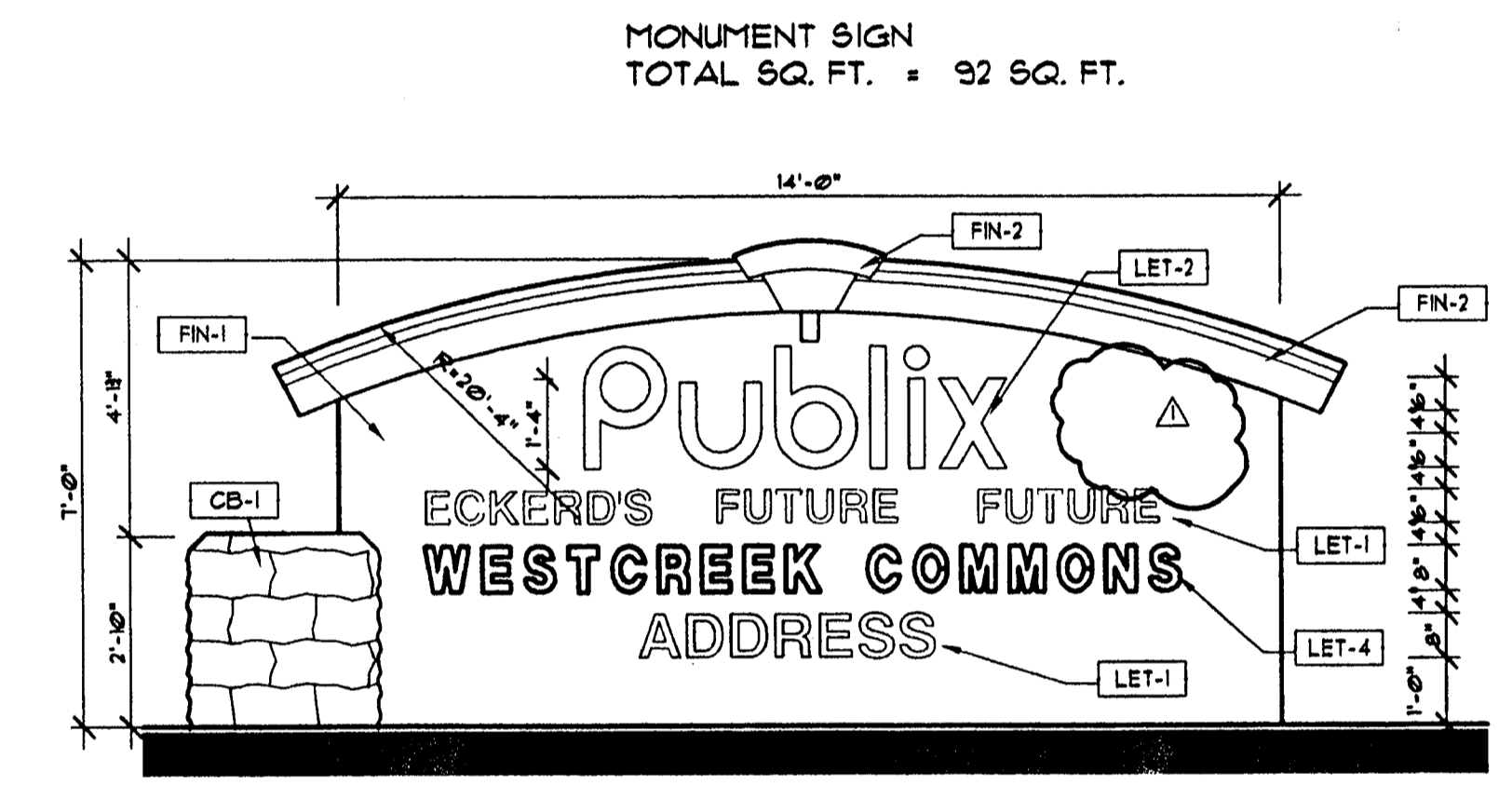
RETAIL "B" : TYPICAL TENANT FASCIA SIGNAGE

SCALE: 3/8" = 1'-0" 04



RETAIL "A" : PUBLIX BUILDING FASCIA SIGNAGE

SCALE: 3/8" = 1'-0" 03



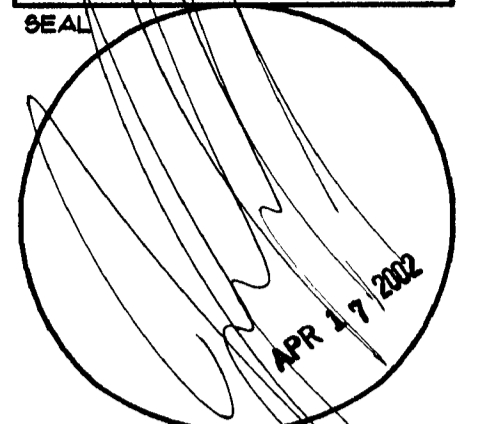
SIGNAGE FINISH SCHEDULE

MARK	DESCRIPTION
CB-1	8" X 8" X 16" SPLIT FACED MASONRY UNIT, STACK BOND, PAINT BENJAMIN MOORE BROOKLINE BEIGE #C-47 USE 4" X 8" X 16" MASONRY UNITS AT CMU COLUMNS USE CORNER UNITS.
FIN-5	PEBBLE TEXTURE STUCCO PAINTED BENJAMIN MOORE BROOKLINE BEIGE #C-47
FIN-2	PEBBLE TEXTURE EIFS TRIM BAND, COLOR TO MATCH BENJAMIN MOORE WHITE CLOUD #155-10
LET-1	6" REVERSE CHANNEL LETTERS #265 ALUM. NON ILLUMINATED W/ 3/16" X 3" ALUM. STUD CONNECTORS (3 TO 5 PER LETTER) 4" O.C. (COLOR WHITE)
LET-2	GREEN CHANNEL LETTERS: #2030 ARISTECH ACRYLIC FFP# 349, #3630-26 VINYL WHITE #1328 R/H (16" AND 22" HIGH)
LET-3	1"-3" REVERSE CHANNEL LETTERS #265 ALUM. NON ILLUMINATED W/ 3/16" X 3" ALUM. STUD CONNECTORS (3 TO 5 PER LETTER) 4" O.C. (COLOR RED)
LET-4	8" REVERSE CHANNEL LETTERS #265 ALUM. NON ILLUMINATED W/ 3/16" X 3" ALUM. STUD CONNECTORS (3 TO 5 PER LETTER) 4" O.C. (COLOR RED)
LET-5	5"-6" HIGH ILLUMINATED CHANNEL LETTERS: GREEN CHANNEL LETTERS: #2030 ARISTECH ACRYLIC FFP# 349, #3630-26 VINYL WHITE #1328 R/H
LET-6	4" HIGH ILLUMINATED CHANNEL LETTERS: GREEN CHANNEL LETTERS: #2030 ARISTECH ACRYLIC FFP# 349, #3630-26 VINYL WHITE #1328 R/H
LET-1	1"-5" HIGH ILLUMINATED CHANNEL LETTERS: GREEN CHANNEL LETTERS: #2030 ARISTECH ACRYLIC FFP# 349, #3630-26 VINYL WHITE #1328 R/H

SITE MONUMENT SIGN

SCALE: 3/8" = 1'-0" 01

REVISION	DATE	DESCRIPTION
1	11/20/01	QTY COMMENTS



CONSULTANT
JEFFREY L. PEAL
FL Reg. # 9002

Architecture 6400 inc.
A Division Of Stiles Corporation
300 S.E. 2nd Street
Fort Lauderdale,
Florida 33301
954 - 621 - 9180

A PROPOSED RETAIL BUILDING:
WESTCREEK COMMONS
HILLSBORO AND LYONS
COCONUT CREEK, FLORIDA

SIGNAGE DETAILS

A-15
DRC

PROJECT NO.
01023
DRAWN BY:
GMD/ANG
CHECKED BY:
dlm
DATE:
08-28-01
91021-A01.DWG