

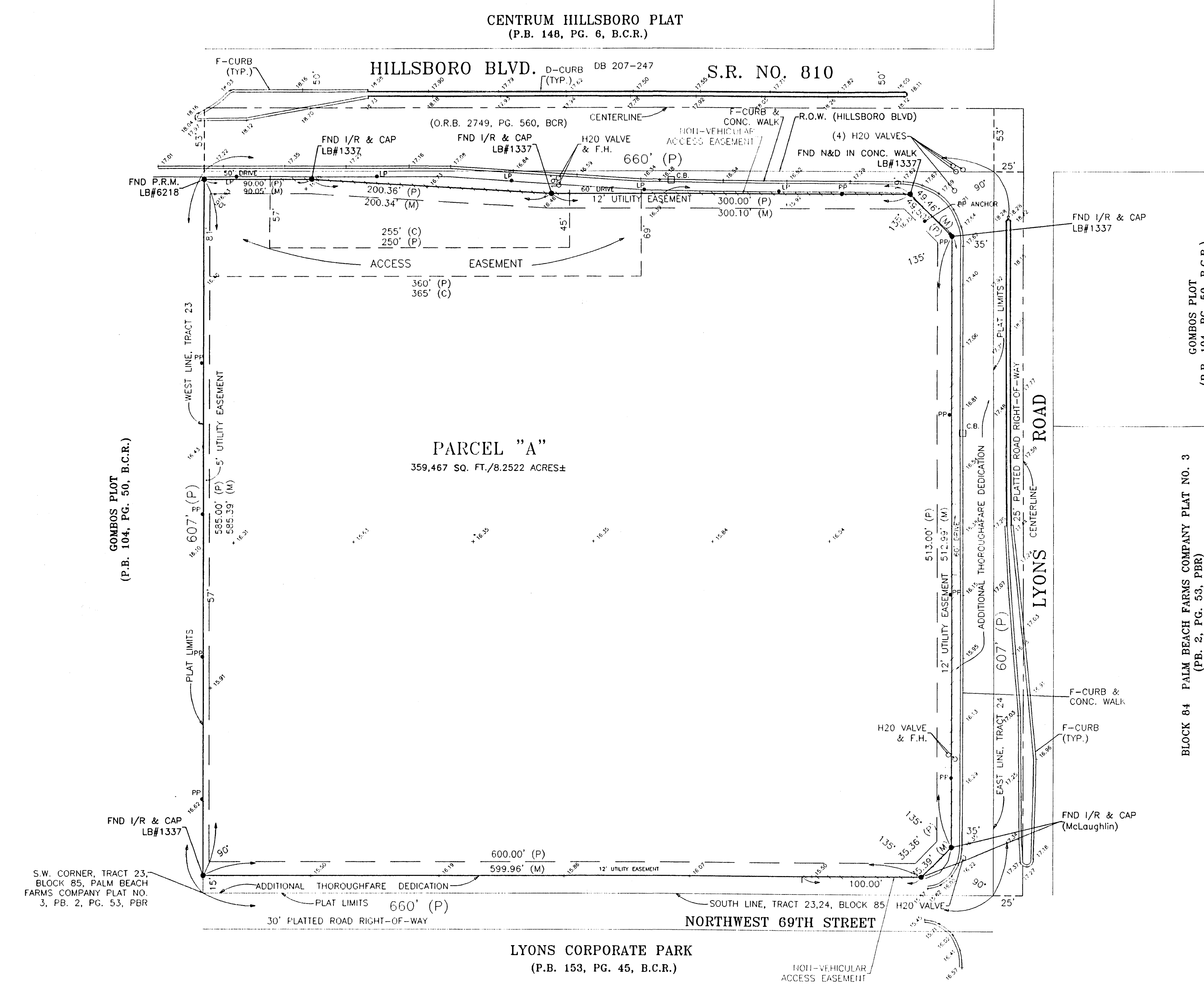
LAND DESCRIPTION:  
All of "PARCEL A", of "ADAMS REALTY COMPANY PLAT", according to the plat thereof, as recorded in Plat Book 106, Page 23, of the Public Records of Broward County, Florida.

- SURVEY NOTES AND QUALIFICATIONS:
1. This survey map and report is not valid without the signature and original raised seal of Florida licensed surveyor and mapper which can be found at the end of this survey.
  2. Elevations shown herein are based on the National Geodetic Vertical Datum of 1929
  3. Set IR w/cap (LB# 6727) at property corners unless otherwise noted
  4. Benchmark reference: Broward County Benchmark# 14460, Northwest corner concrete sidewalk at the Hut Migrant Mission Store, Southeast corner Hillsboro Boulevard and Northwest 51 Terrace.
  5. Bearings shown herein are relative to the plat of "ADAMS REALTY COMPANY PLAT", PB 106, PG 23, BCR, (WEST LINE)
  6. Property contains 359,467 square feet, more or less (TOTAL)
  7. Expected use of property is Commercial. The minimum relative distance accuracy for this type of Boundary Survey is 1 ft. in 10,000 ft. The accuracy obtained by measurement & calculations was found to exceed this requirement.
  8. Lands herein were not abstracted for easements and/or rights-of-way of record.
  9. Easements shown herein are based on Commitment No. 09904.0207 prepared by Lawyers Title Insurance Corporation on June 28, 2001 at 6:00 a.m.
  10. Subject to Ordinance No. 87-87 recorded in Official Records Book 15050, Page 817.

- LEGEND
- A = arc length
  - BCR = Broward County Records
  - CAP = survey cap
  - CB = catch basin
  - CS = curb & gutter
  - CI = curb inset
  - CONC = concrete
  - DA = diameter
  - DMH = drainage manhole
  - EOP = edge of pavement
  - EW = edge of water
  - ESB = electrical service box
  - FB = field book
  - FI = fire hydrant
  - FND = found
  - FPL = Florida Power & Light
  - IR = iron rod
  - L = arc length
  - LP = light pole
  - MH = manhole
  - ORB = Official Records Book
  - PB = plat book
  - PG = page
  - PKWY = parkway
  - POB = point of beginning
  - POC = point of commencement
  - POC = point of commencement
  - PRM = permanent reference monument
  - R = radius
  - R/W = right-of-way
  - SAN = sanitary
  - SB = Bell South Telephone Co
  - SF = square feet
  - SSMH = sanitary sewer manhole
  - SW = sidewalk
  - TOB = top of bank
  - TR = typical
  - + = spot elevation
  - 0 = tree
  - = non vehicular access line
  - DCR = Deek County Records
  - PCP = Permanent control point
  - ∠ = central angle
  - x.3x = elevation

CERTIFIED TO:  
Lawyers Title Insurance Corporation  
Greenberg Traurig, P.A.  
Stiles Corporation

For the Firm:   
Scott Douglas  
Professional Surveyor & Mapper  
Florida Registration No 4532



CENTRUM HILLSBORO PLAT  
(P.B. 148, PG. 6, B.C.R.)

HILLSBORO BLVD. S.R. NO. 810

PARCEL "A"  
359,467 SQ. FT./8.2522 ACRES±

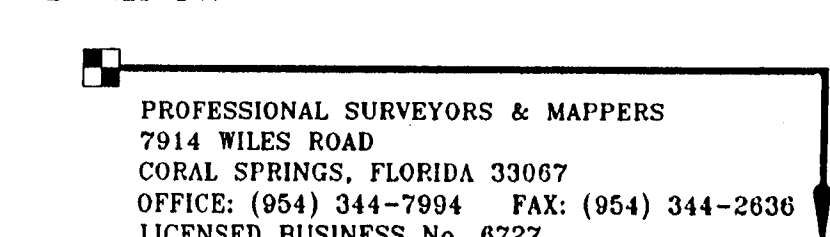
GOMBOS PLOT  
(P.B. 104, PG. 50, B.C.R.)

GOMBOS PLOT  
(P.B. 104, PG. 50, B.C.R.)

BLOCK 84 PALM BEACH FARMS COMPANY PLAT NO. 3  
(P.B. 2, PG. 53, PBR)

LYONS CORPORATE PARK  
(P.B. 153, PG. 45, B.C.R.)

NORTHWEST 69TH STREET

PREPARED BY:  
  
PROFESSIONAL SURVEYORS & MAPPERS  
7914 WILES ROAD  
CORAL SPRINGS, FLORIDA 33067  
OFFICE: (954) 344-7994 FAX: (954) 344-2836  
LICENSED BUSINESS No. 6727

PREPARED FOR:  
STILES DEVELOPMENT  
6400 N. ANDREWS AVE  
FORT LAUDERDALE, FLORIDA 33309

PROJECT:  
ADAMS REALTY COMPANY PLAT  
A.L.T.A. BOUNDARY SURVEY

REVISIONS:

Date	Description	By	Date	Description	By
08/20/00	Added Certification	jac			

DRAWING DATA:  
Drawing date: 01/27/00  
fb/pg source: VARIES  
Drafter: JEC  
Checked: SJD  
CADD dwg no: 00005 BNDRY.DWG  
SHEET: 1/1

HORIZONTAL SCALE (FT.)  
0 25 50 100

