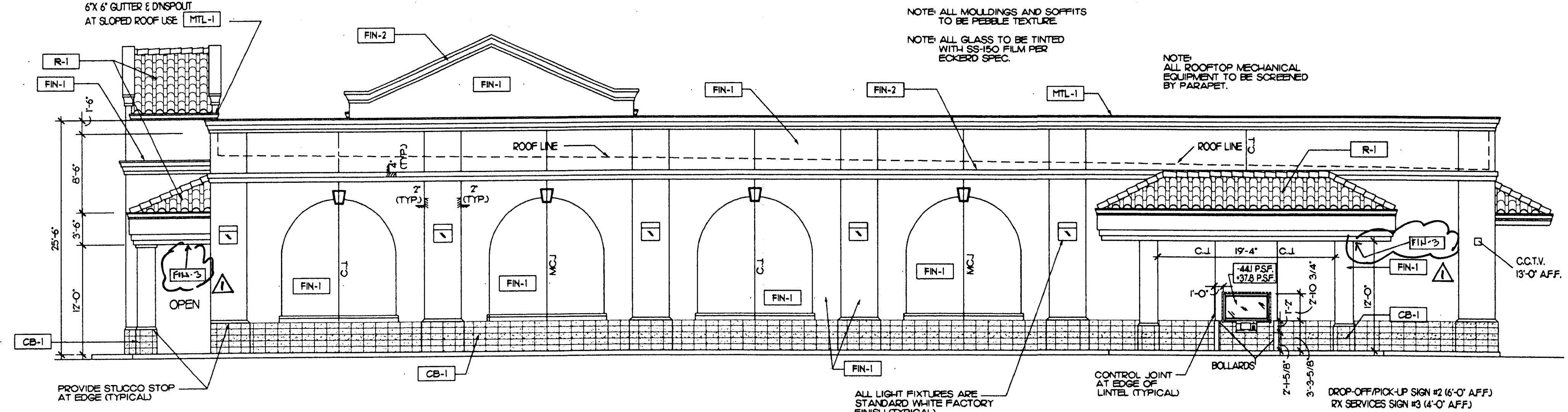


**1 NORTH ELEVATION**  
SCALE: 1/8"=1'-0"

**2 SOUTH ELEVATION**  
SCALE: 1/8"=1'-0"



**3 WEST ELEVATION**  
SCALE: 1/8"=1'-0"

- NOTE:
- 1) CONTRACTOR SHALL SUBMIT SAMPLES OF ALL MATERIALS TO ECKERD CONSTRUCTION MANAGER FOR APPROVAL PRIOR TO APPLICATIONS OF FINISHES THIS SHEET ONLY.
  - 2) ALL DIMENSIONS ARE TO FACE OF FINISH UNLESS NOTED OTHERWISE.
  - 3) SHERWIN-WILLIAMS & BENJAMIN MOORE ARE ONLY ACCEPTABLE PAINT MANUFACTURERS. ONLY EXACT MATCHES TO SPECIFIED COLORS WILL BE APPROVED.
  - 4) COORDINATE ALL STUCCO CONTROL JOINTS TO OCCUR AT ALL MASONRY CONTROL JOINTS.
  - 5) ALL STUCCO CONTROL JOINTS TO BE CONTINUOUS FROM FINISHED GRADE TO PARAPET AND PENETRATE THROUGH BULLNOSE DETAILS.
  - 6) STUCCO WALLS TO HAVE FINISH PER ELEVATIONS. ALL ACCENT BANDS AND SOFFITS TO HAVE SMOOTH FINISH.
  - 7) ALL EXTERIOR PAINT TO BE SATIN FINISH.
  - 8) ECKERD TO SUPPLY AND INSTALL SECURITY CAMERAS. CONTRACTOR TO SUPPLY AND INSTALL ALL CONDUIT.

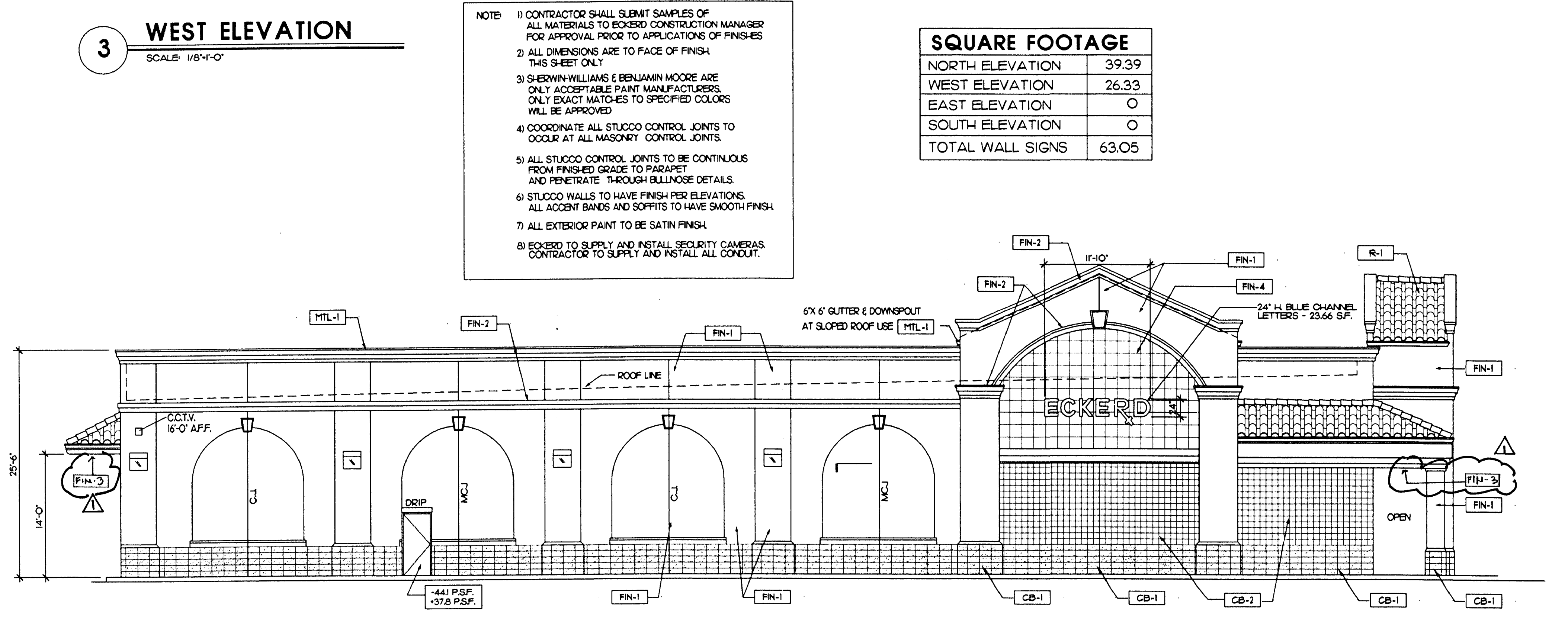
**SQUARE FOOTAGE**

NORTH ELEVATION	39.39
WEST ELEVATION	26.33
EAST ELEVATION	0
SOUTH ELEVATION	0
TOTAL WALL SIGNS	63.05

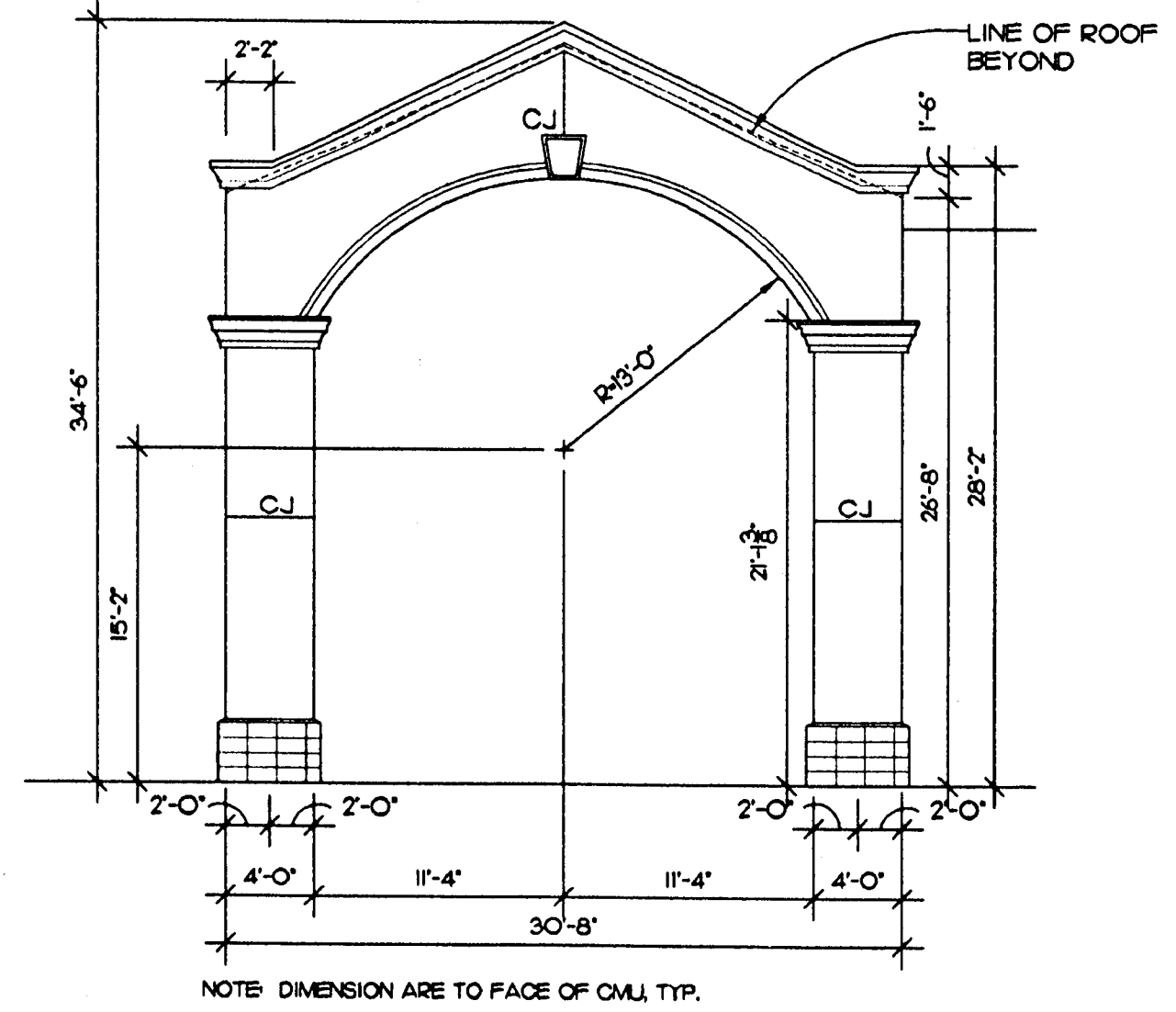
**EXTERIOR FINISH SCHEDULE**

MARK	DESCRIPTION
CB-1	8" X 8" X 16" SPLIT FACED MASONRY UNIT, STACK BOND, PAINT BENJAMIN MOORE BROOKLINE BEIGE #4C-147 SATIN. USE 4" X 8" X 16" MASONRY UNITS AT CMU COLUMNS. USE CORNER UNITS.
CB-2	8" X 8" X 16" SINGLE SCORED MASONRY UNIT, RUNNING BOND, PAINT TO MATCH FIN-1. USE CORNER UNITS.
FIN-1	PEBBLE TEXTURE STUCCO PAINTED BENJAMIN MOORE MYSTIC BEIGE #262-60 SATIN
FIN-2	PEBBLE TEXTURE STUCCO PAINTED BENJAMIN MOORE WHITE CLOUD #2159-70
FIN-3	PEBBLE TEXTURE STUCCO PAINTED TO MATCH BENJAMIN MOORE OCTOBER SKY #262-70. TO BE USED ON ALL SOFFIT AREAS.
FIN-4	PEBBLE TEXTURE STUCCO 16" X 16" PATTERN W/ 1/4" X 1/4" V" SCORED PAINTED BENJAMIN MOORE MYSTIC BEIGE #262-60 SATIN.
MTL-1	PRE-FINISHED METAL TO MATCH FIN-2
R-1	CONC. TILE ROOF BY MONIER STYLE CAPRI COLOR TERRA COTTA NO FLASH #CASS6100F

NOTE: MAX. BUILDING HEIGHT ALLOWED +30'-0"  
ACTUAL PROVIDED +25'-6"  
MAX. ARCHITECTURAL PGATURE +35'-0"  
ACTUAL PROVIDED +34'-6"



**4 EAST ELEVATION**  
SCALE: 1/8"=1'-0"



**5 MAIN ELEMENT DIMENSIONS**  
SCALE: 1/8"=1'-0"