



**THE  
RON JONA  
COLLABORATIVE**

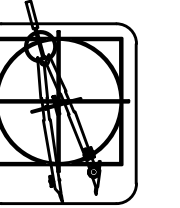
ARCHITECTS  
DESIGNERS  
CONSULTANTS

29110 INKSTER, SUITE 150  
SOUTHFIELD, MI 48034

P. 248.357.3600  
F. 248.357.3646

WWW.RONJONA.COM

KEVIN D. HART, AIA



ARCHITECTURE  
PLANNING  
DESIGN  
ENGINEERING

F. 248.642.9427  
700 EAST MAPLE, SUITE 101  
BIRMINGHAM, MI 48009

©2014 THE RON JONA COLLABORATIVE

THIS DOCUMENT AND THE INFORMATION CONTAINED THEREIN IS THE SOLE PROPERTY OF THE RON JONA COLLABORATIVE AND SHALL NOT BE ALTERED OR REPRODUCED WITHOUT THE EXPRESS WRITTEN PERMISSION OF THE RON JONA COLLABORATIVE. ANY MODIFICATION OR ALTERATION HEREOF SHALL BE THE RESPONSIBILITY OF THE RON JONA COLLABORATIVE OF ALL EXPENSES, CLAIMS AND/OR LIABILITY RESULTING FROM SUCH MODIFICATIONS OR ALTERATIONS.

DO NOT SCALE DRAWINGS

ISSUED	PERMITS
11-10-14	
01-07-15	

FILE	
DRAWN	ERW
CHECKED	KDH/RJ
SEAL	

CLIENT  
ADIOS GOLF CLUB  
7740 NW 39th AVENUE  
COCONUT CREEK, FL 33073

PROJECT  
PROPOSED TEACHING FACILITY  
ADIOS GOLF CLUB  
COCONUT CREEK, FL

JOB NO.

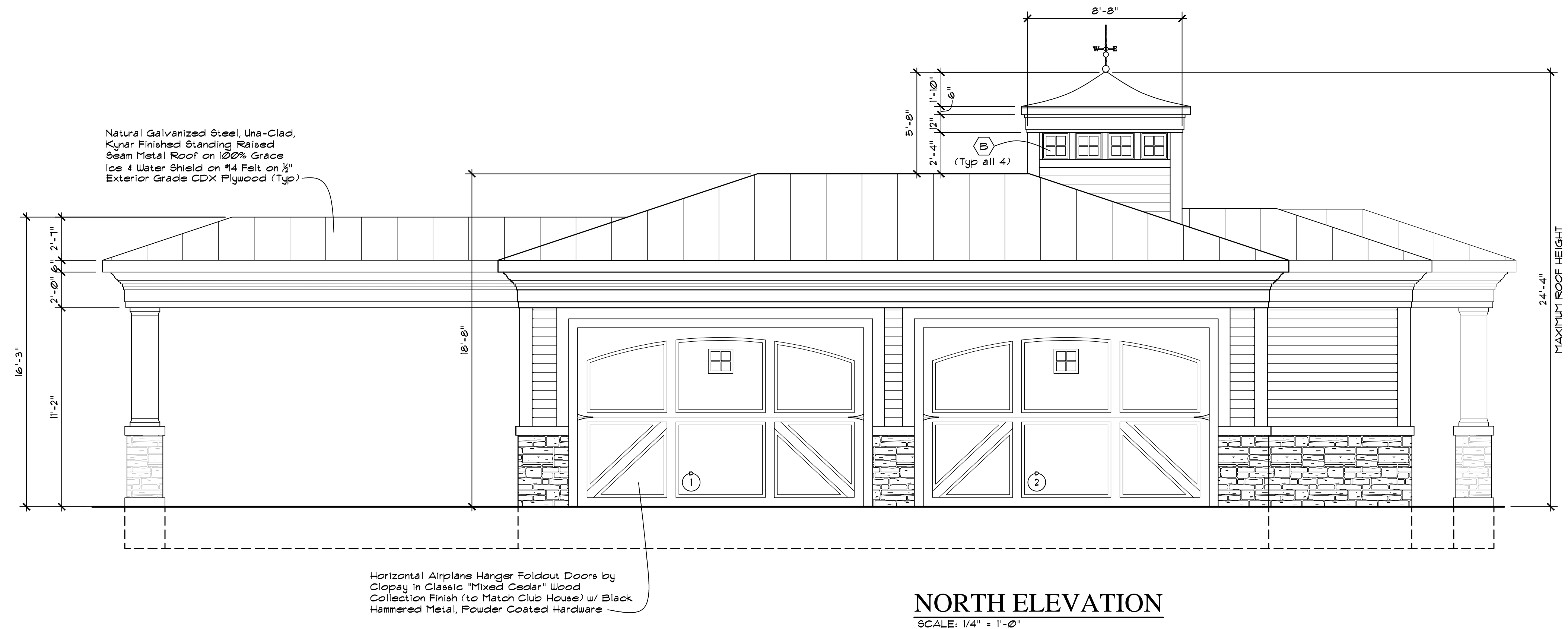
1411

SHEET

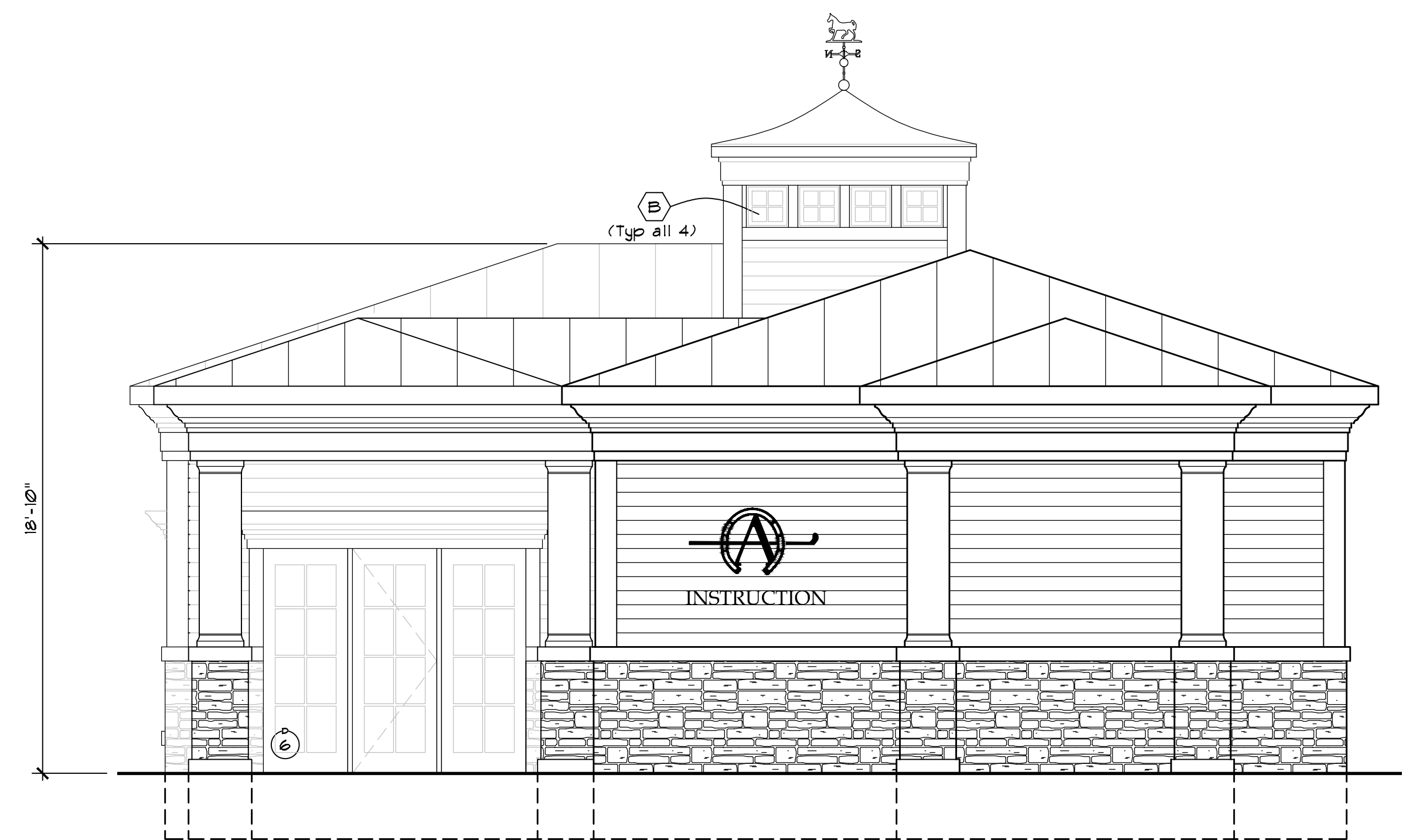
ELEVATIONS

SHEET NO.

A-6



**NORTH ELEVATION**  
SCALE: 1/4" = 1'-0"



**EAST ELEVATION**  
SCALE: 1/4" = 1'-0"