



THE  
RON JONA  
COLLABORATIVE

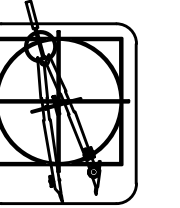
ARCHITECTS  
DESIGNERS  
CONSULTANTS

29110 INKSTER, SUITE 150  
SOUTHFIELD, MI 48034

P. 248.357.3600  
F. 248.357.3646

WWW.RONJONA.COM

KEVIN D. HART, AIA



ARCHITECTURE  
PLANNING  
DESIGN  
ENGINEERING

F. 248.642.9427  
700 EAST MAPLE, SUITE 101  
BIRMINGHAM, MI 48009

©2014 THE RON JONA COLLABORATIVE

THIS DOCUMENT AND THE INFORMATION CONTAINED THEREIN IS THE SOLE PROPERTY OF THE RON JONA COLLABORATIVE AND SHALL NOT BE ALTERED OR MODIFIED WITHOUT THE EXPRESS WRITTEN PERMISSION OF THE RON JONA COLLABORATIVE. ANY MODIFICATION OR ALTERATION HEREOF SHALL BE THE RESPONSIBILITY OF THE USER. THE RON JONA COLLABORATIVE IS NOT RESPONSIBLE FOR ANY LIABILITY RESULTING FROM SUCH MODIFICATIONS OR ALTERATIONS.

DO NOT SCALE DRAWINGS

ISSUED	
11-10-14	PERMITS

FILE	
DRAWN	ERW
CHECKED	KDH/RJ
SEAL	

CLIENT  
ADIOS GOLF CLUB  
7740 NW 39th AVENUE  
COCONUT CREEK, FL 33073

PROJECT  
PROPOSED TEACHING FACILITY  
ADIOS GOLF CLUB  
COCONUT CREEK, FL

JOB NO.

1411

SHEET

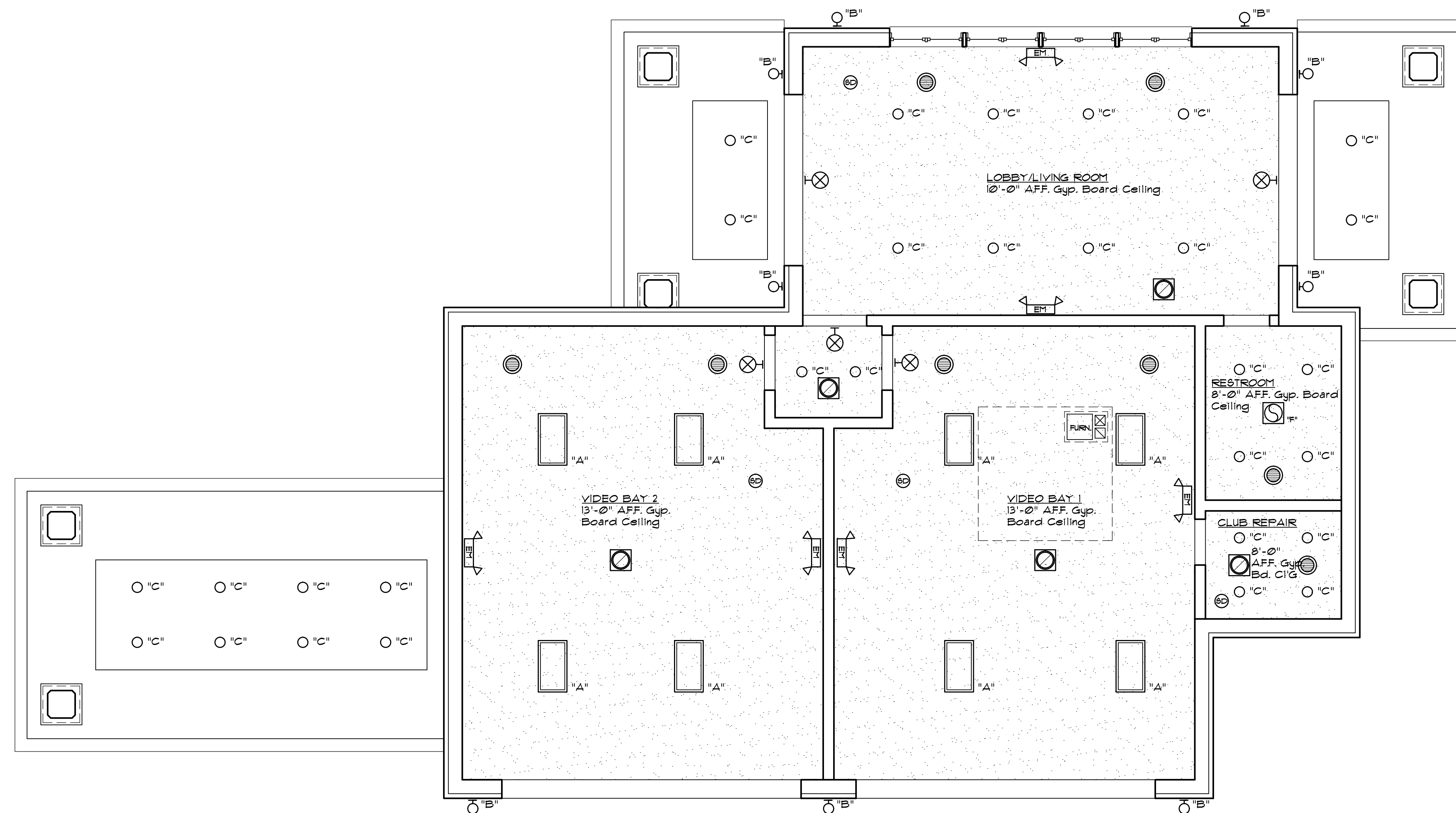
LIGHTING PLAN

SHEET NO.

AC-1

### REFLECTED CEILING LEGEND

- "A" SURFACE MOUNTED, T8 2x4 FLUORESCENT TROFFER LIGHT FIXTURE BY LITHONIA, 4 BULB FLUORESCENT 60 WATT LAMPS
- "B" WALL MTD. INCANDESCENT FIXTURE
- "C" RECESSED INCANDESCENT DOWN LIGHT
- "D" RECESSED COMPACT FLUORESCENT WALL WASHER
- "E" LANTERN PENDANT FIXTURE
- "F" SURFACE MOUNTED INCANDESCENT FIXTURE
- EXHAUST FAN W/ LIGHT, BROAN 120 CFM, PART # MHS120L W/ MOTION SENSOR
- 50 WATT, 120 VOLT, DUAL LAMP EMERGENCY LIGHT BY LITHONIA, PART # ELM4 OR EQ.
- EMERGENCY EXIT SIGN W/ BATTERY BACKUP BY LITHONIA, PART # LQM5W3 OR EQ.
- DUAL CARBON MONOXIDE / SMOKE DETECTOR - WIRED TO OTHER UNITS FOR UNISON ALARM PROVIDE BATTERY BACKUP BRK # BC9120B (2FTP4)
- SUPPLY AIR DIFFUSER
- RETURN AIR GRILLE



### PROPOSED LIGHTING PLAN

SCALE: 1/4" = 1'-0"