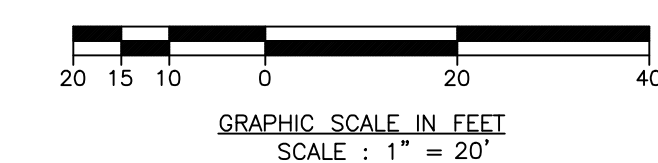
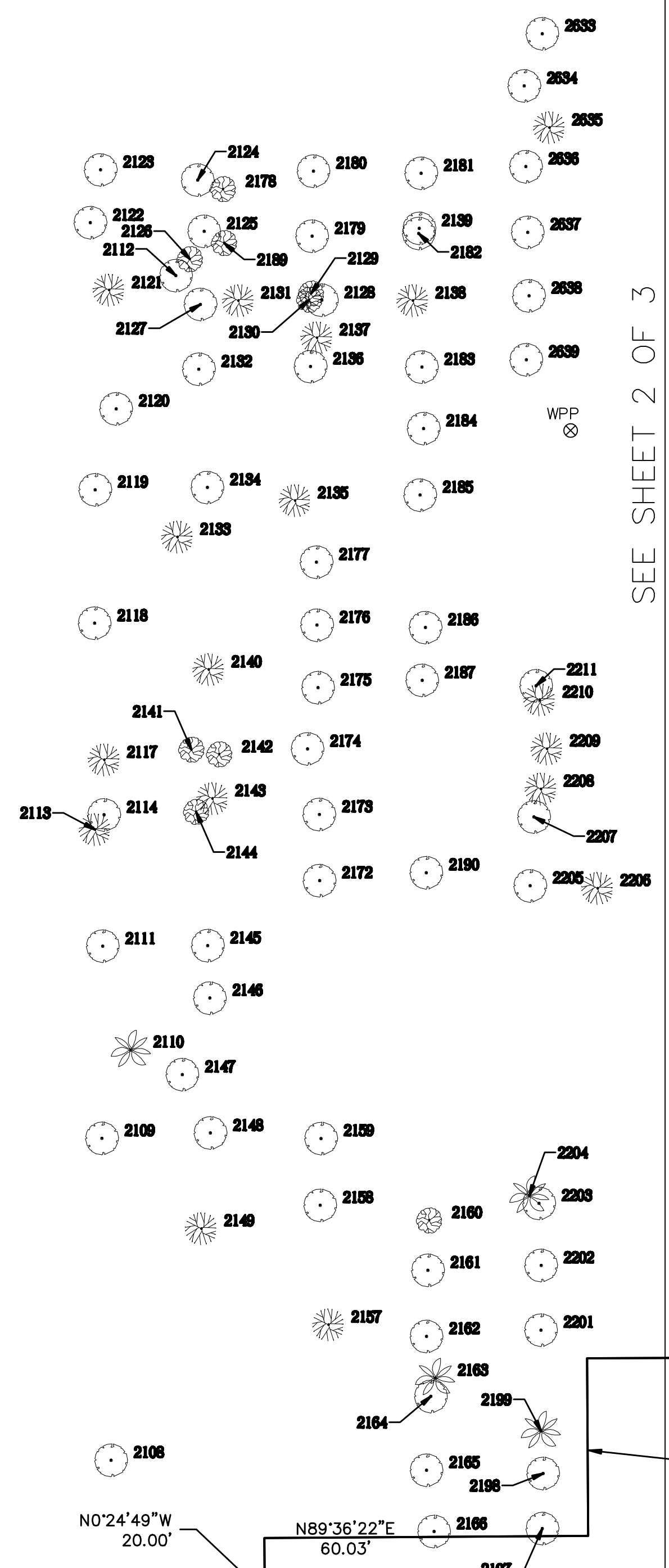


PARCEL "A-1"
 "NORTHWEST PARK OF COMMERCE"
 PLAT BOOK 148, PAGE 24



N89°36'22"E 703.34' (P)
 N89°30'06"E 703.93' (F)

WPP



SEE SHEET 2 OF 3
 MATCHLINE A-A

N89°45'03"E 330.00'

N0°24'49"W 32.86'

N0°24'49"W 20.00'

N89°36'22"E 60.03'

PARCEL A
 GROVE PARC PLAT
 PLAT BOOK 178, PAGE 146

SEE SHEET 3 OF 3 FOR TREE LIST
 SEE SHEET 1 OF 3 FOR LEGEND, CERTIFICATION AND BOUNDARY SURVEY

TREE #	DESCRIPTION
2108	6" Orange
2109	6" Orange
2110	6" Cabbage Palm
2111	4" Orange
2112	4" Oak
2113	2" Oak
2114	4" Orange
2117	2" Oak
2118	4" Orange
2119	4" Orange
2120	3" Oak
2121	2" Oak
2122	4" Orange
2123	4" Orange
2124	6" Orange
2125	6" Orange
2126	2" Unknown
2127	6" Orange
2128	4" Unknown
2129	4" Unknown
2130	6" Orange
2131	2" Oak
2132	6" Orange
2133	2" Oak
2134	6" Orange
2135	6" Oak
2136	6" Orange
2137	2" Oak
2138	4" Oak
2139	6" Orange
2140	3" Oak
2141	3" Unknown
2142	6" Unknown
2143	4" Oak
2144	4" Unknown
2145	6" Orange
2146	3" Oak
2147	4" Oak
2148	6" Orange
2149	2" Oak
2157	2" Oak
2158	4" Orange
2159	4" Orange
2160	3" Unknown
2161	6" Orange
2162	6" Orange
2163	6" Cabbage Palm
2164	6" Orange
2165	6" Orange
2166	6" Orange
2172	6" Orange
2173	6" Orange
2174	6" Orange
2175	6" Orange
2176	6" Orange
2177	6" Orange
2178	5" Unknown
2179	6" Orange
2180	6" Orange
2181	6" Orange
2182	6" Orange
2183	6" Orange
2184	6" Orange
2185	6" Orange
2186	4" Orange
2187	6" Orange
2189	4" Oak
2190	6" Orange
2197	6" Orange
2198	6" Orange
2199	6" Cabbage Palm
2201	6" Orange
2202	6" Orange
2203	6" Orange
2204	6" Cabbage Palm
2205	6" Orange
2206	2" Oak
2207	6" Orange
2208	2" Oak
2209	2" Oak
2210	4" Oak
2211	6" Orange
2295	2" Oak
2296	4" Oak
2297	4" Oak
2298	4" Oak
2299	4" Oak
2300	4" Oak
2326	4" Oak
2328	2" Oak
2405	2" Oak
2489	6" Orange
2633	6" Orange
2634	6" Orange
2635	4" Oak
2636	6" Orange
2637	6" Orange
2638	6" Orange
2639	6" Orange

CATV Riser

WM

Utility Riser

S0°24'49"E 278.97'

Sanitary Sewer Manhole with Concrete Apron

PARCEL "A"
 "REGENCY LAKES AT COCONUT CREEK"
 PLAT BOOK 157, PAGE 23

NO.	REVISION	BY	DATE
3	ADD TREES	SAR	12/5/13
2	UPDATE SURVEY FB 2065/66	SAR	9/30/13
1	UPDATE RECORDING INFORMATION	SAR	6/11/13

SURVEY OF PROPERTY DESCRIBED HEREON

GROVE PARC PLAT REMAINDER PARCEL

JOHN A. GRANT, JR., INC.
 CONSULTING ENGINEERS
 3333 NORTH FEDERAL HIGHWAY
 BOCA RATON, FLORIDA 33431
 PH. NO. 561-395-3333 FAX NO. 561-395-3315
 LICENSED BUSINESS NO. LB 50

MADE	WR	DATE	7/15/91	FB	1110/5-10
CHECKED		DATE		SCALE	1" = 40'
JOB NO.	JG-100-6531REM	SHEET	3	OF	3

Drawing: K:\06531\06531.dwg Files\06531REM Tree Survey Dec 13.dwg 50533