

revision:	4-22-14	RESPONSE TO CITY COMMENTS-REV. SITE
date:	5-12-14	RESPONSE TO CITY COMMENTS-REV. SITE

commission:	13051
principal:	CBP
project manager:	CBP

file name: LP-1

date: 01-28-14

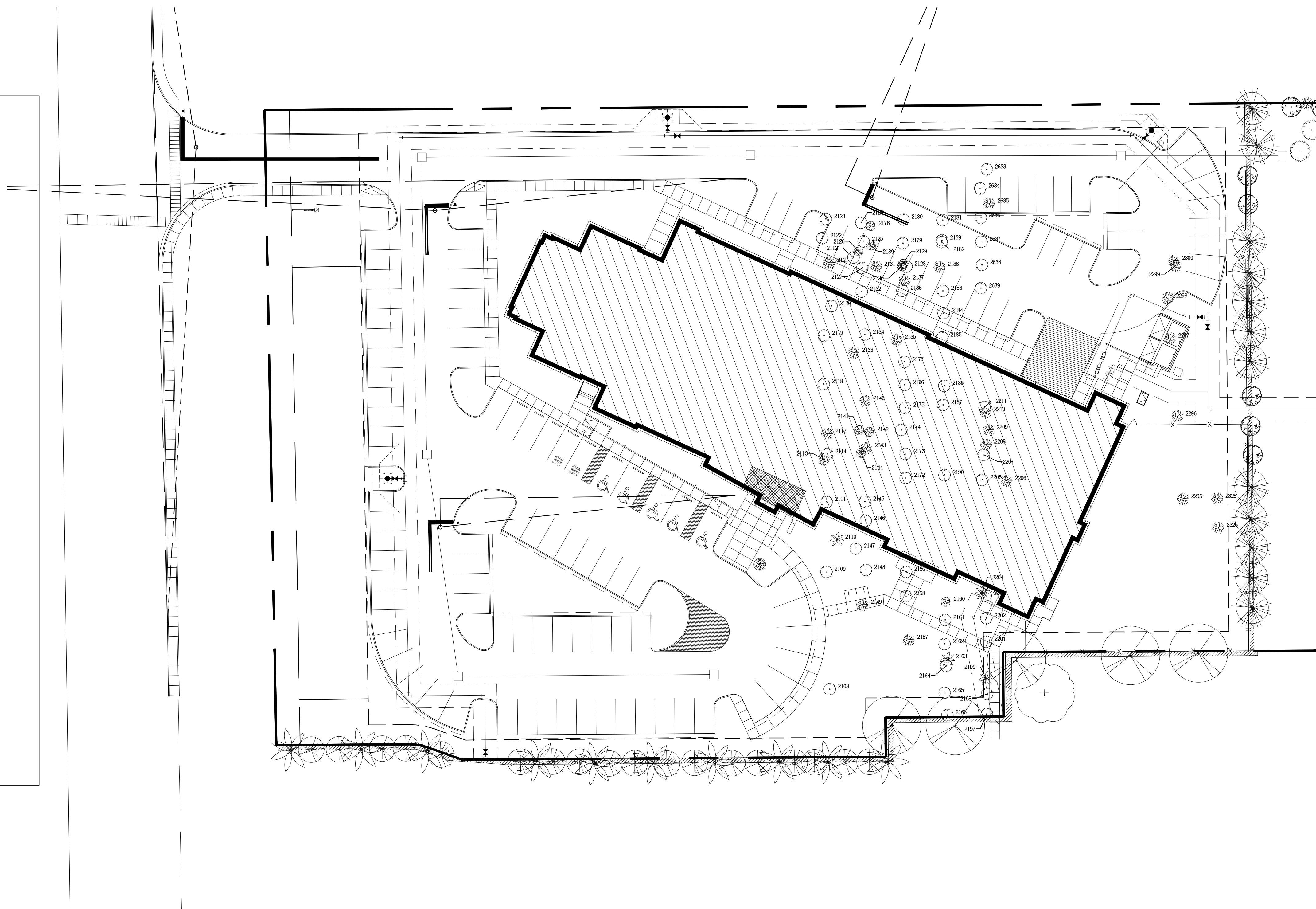
title: TREE REMOVAL PLAN

TR-1

of: 4 | L

EXISTING TREES TO BE REMOVED

TREE #	DESCRIPTION	TREE #	DESCRIPTION	TREE #	DESCRIPTION
2108	6" Orange	2166	6" Orange	2636	6" Orange
2109	6" Orange	2172	6" Orange	2637	6" Orange
2110	6" Cabbage Palm	2173	6" Orange	2638	6" Orange
2111	4" Orange	2174	6" Orange	2639	6" Orange
2112	4" Orange	2175	6" Orange	LA1	2" Oak
2113	2" Oak	2176	6" Orange	LA2	3" Oak
2114	4" Orange	2177	6" Orange	LA3	3" Oak
2117	2" Oak	2178	6" Orange	LA4	3" Oak
2118	4" Orange	2179	6" Orange		
2119	4" Orange	2180	6" Orange		
2120	6" Orange	2181	6" Orange		
2121	2" Oak	2182	6" Orange		
2122	4" Orange	2183	6" Orange		
2123	4" Orange	2184	6" Orange		
2124	6" Orange	2185	6" Orange		
2125	6" Orange	2186	4" Orange		
2126	2" Carrotwood	2187	6" Orange		
2127	6" Orange	2189	6" Orange		
2129	4" Carrotwood	2190	6" Orange		
2130	6" Orange	2197	6" Orange		
2132	6" Orange	2198	6" Orange		
2133	2" Oak	2199	6" Cabbage Palm		
2134	6" Orange	2201	6" Orange		
2135	6" Oak	2202	6" Orange		
2136	6" Orange	2203	6" Orange		
2137	2" Oak	2204	6" Cabbage Palm		
2138	4" Oak	2205	6" Orange		
2139	6" Orange	2206	2" Oak		
2140	3" Oak	2207	6" Orange		
2141	3" Carrotwood	2208	2" Oak		
2142	6" Carrotwood	2209	2" Oak		
2143	4" Oak	2210	4" Oak		
2144	4" Carrotwood	2211	6" Orange		
2145	6" Orange	2293	2" Oak		
2146	3" Oak	2295	2" Oak		
2147	6" Orange	2296	4" Oak		
2148	6" Orange	2297	4" Oak		
2149	2" Oak	2298	4" Oak		
2157	2" Oak	2299	4" Oak		
2158	4" Orange	2300	4" Oak		
2159	4" Orange	2323	4" Oak		
2160	3" Carrotwood	2326	4" Oak		
2161	6" Orange	2328	2" Oak		
2162	6" Orange	2633	6" Orange		
2163	6" Cabbage Palm	2634	6" Orange		
2164	6" Orange	2635	4" Oak		



TREE REMOVAL PLAN  
1"=30'-0"

MITIGATION CANOPY DATA

NOTE: ALL TREES ON SITE WILL BE REMOVED. FOLLOWING ARE THE TABULATIONS FOR THE OAKS LISTED ABOVE AND TAGGED ON THIS PLAN.

EXISTING OAKS ARE ALL SEEDLINGS WITH CANOPIES FROM 3' SPREAD TO 6' SPREAD. WE USED THE FOLLOWING CALCULATIONS FOR THE TREE SQUARE FOOTAGE:

CAT.	QTY.	S.F.	TOTAL S.F. OF CANOPY
2"	14	12.5	175
3"	5	28	140
4"	11	38	418
6"	1	153	153

GRAND TOTAL S.F. CANOPY 886 S.F.

886 S.F. / 300 SF (for CAT. 1 replacement) = 3 trees required for replacement/mitigation.

SABAL AND CITRUS ARE NOT MITIGATED FOR ON THIS PLAN. THE SABALS ARE TOO SHORT TO BE COUNTED.

THE TREES THAT WILL NOT BE MITIGATED FOR ARE THE EXISTING CITRUS TREES THAT WERE GROWN FOR COMMERCIAL PURPOSES AS WELL AS THE CARROTWOODS WHICH ARE INVASIVE.