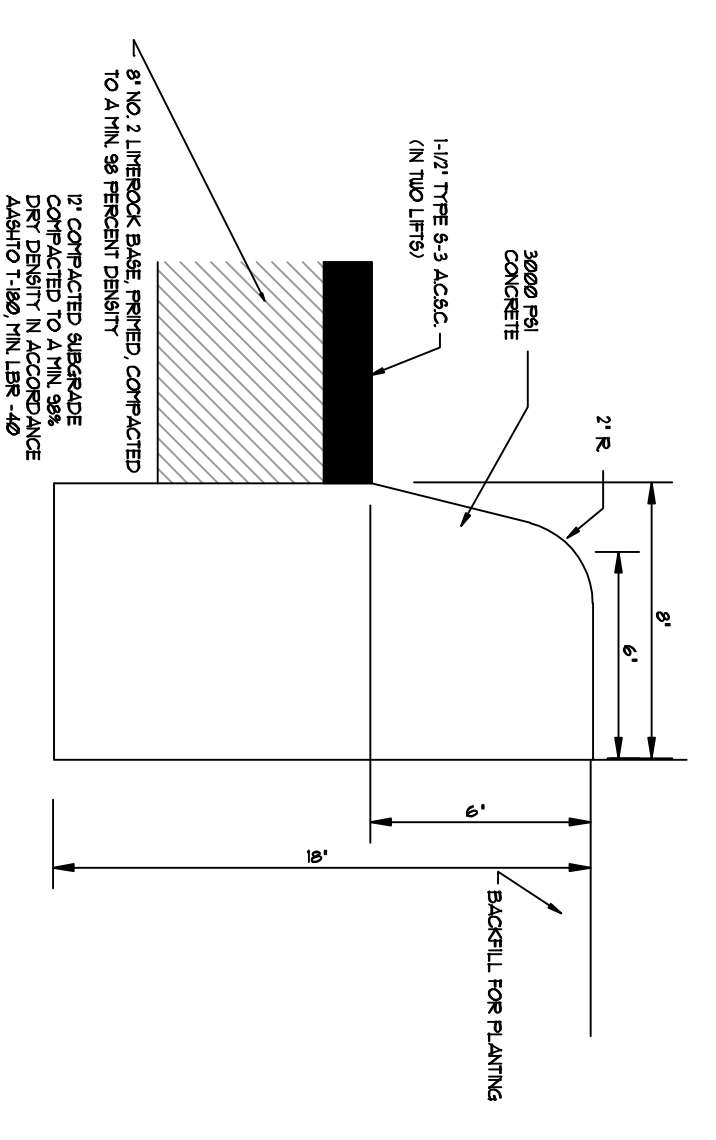
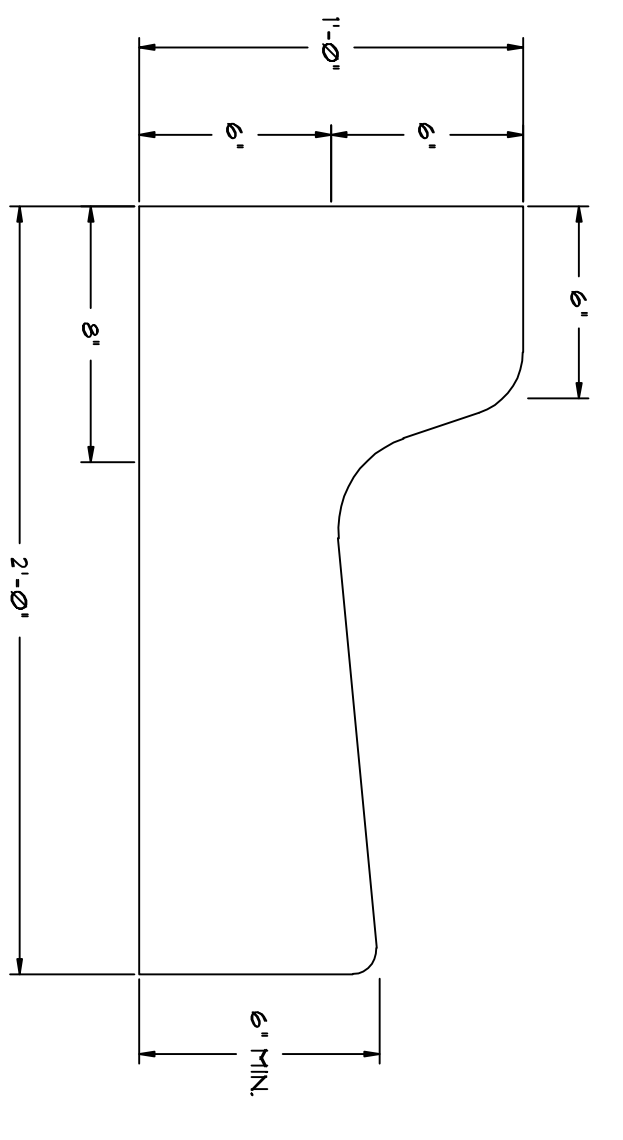


PAVEMENT SECTION

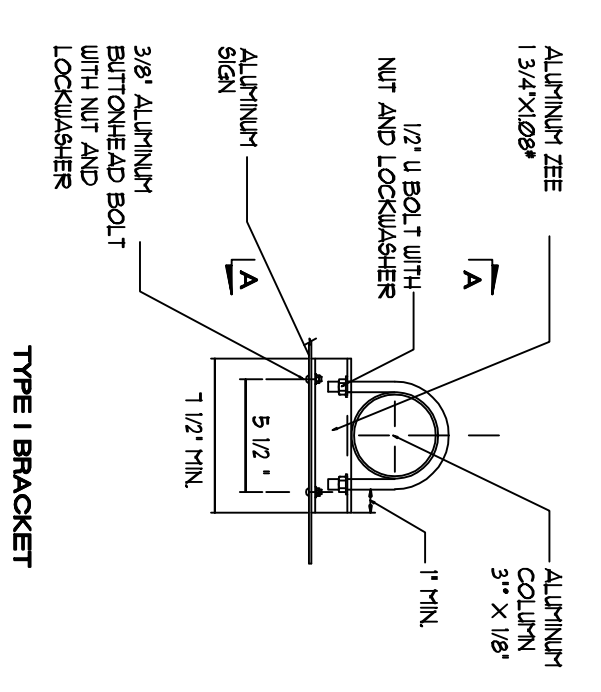
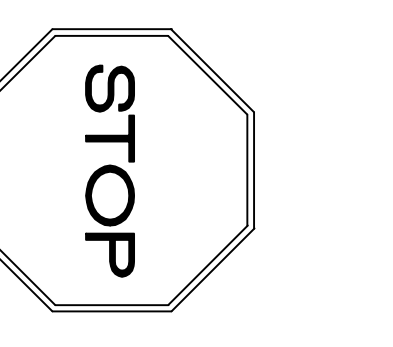


TYPICAL TYPE 'D' CURBING



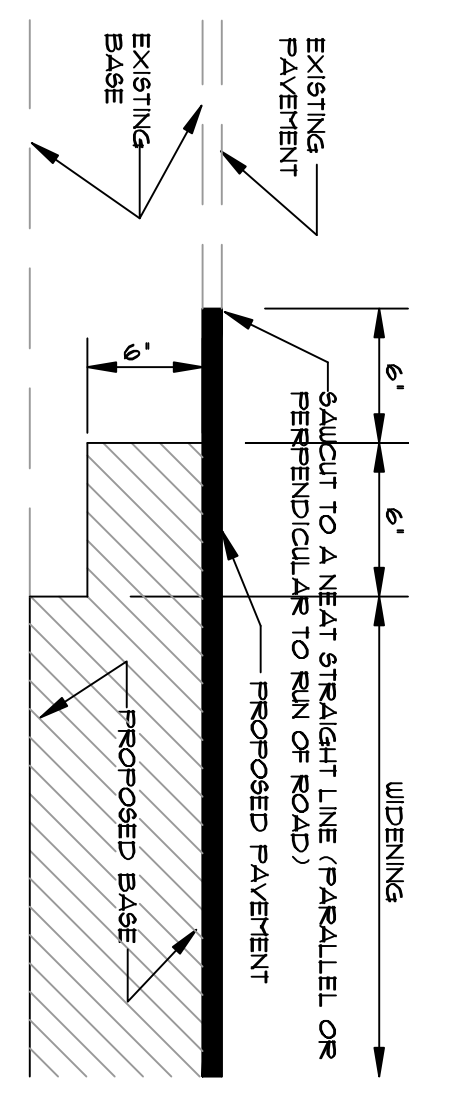
TYPE 'F' CURB DETAIL

NOTE:
WHEN USED ON HIGH SIDE OF ROADWAYS, THE CROSS SLOPE OF THE CURB SHALL MATCH THE CROSS SLOPE OF THE ADJACENT PAVEMENT AND THE THICKNESS OF THE LIP SHALL BE 5\"/>

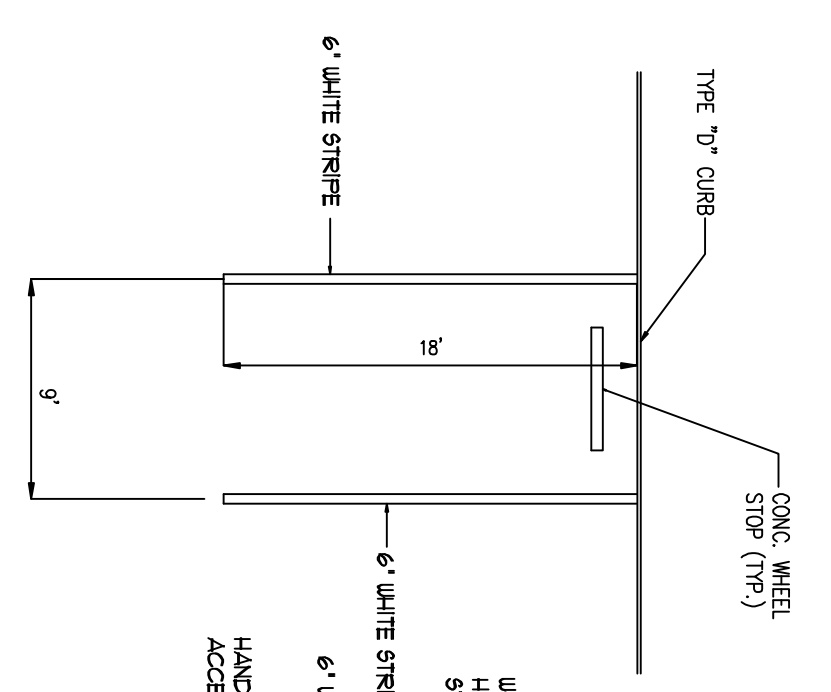


NOTES:
1. STOP SIGNS SHALL HAVE REFLECTIVE RED BACKGROUND AND REFLECTIVE LETTERS TO HITCH.
2. HANDLE OF SIGNPOST TRAFFIC CONTROL DEVICES.

STOP SIGN AND TYPICAL SIGN BRACKET DETAIL

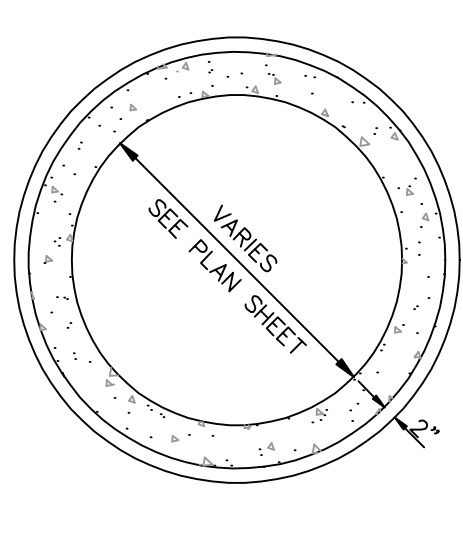


SAWCUT DETAIL



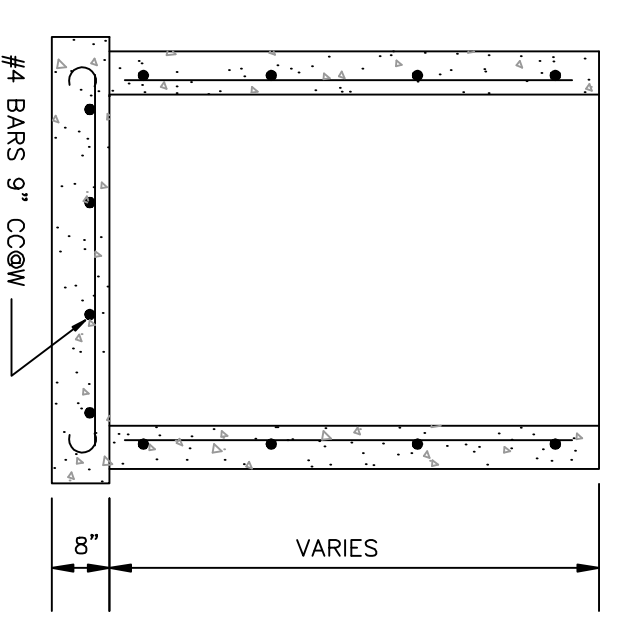
TYPICAL PARKING STALL DETAILS

- HANDPAINTED SIGN WILL BE OF F.D.O.T. (BLUE) COLOR.
- PARKING BORDER LINES (ONE ON EACH SIDE) OF THE HANDPAINT SPACE WILL BE OF A WHITE STRIPE 6\"/>



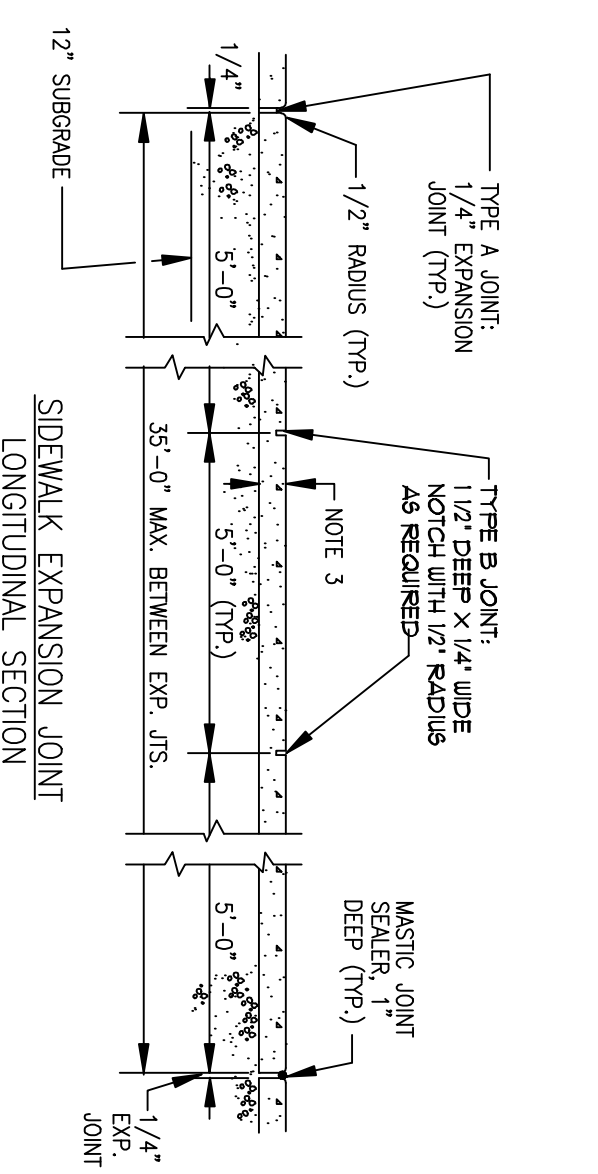
PLAN

4000 P.S.I. CONCRETE AT 28 DAYS
TYPE II CEMENT

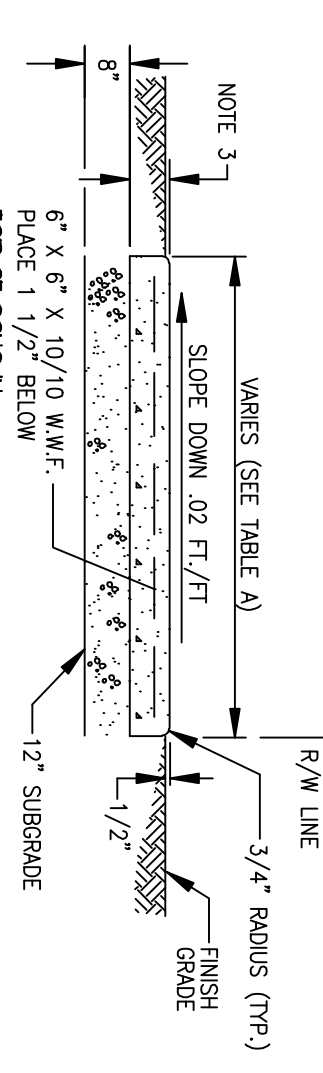


SECTION

TYPE 'P' STRUCTURE



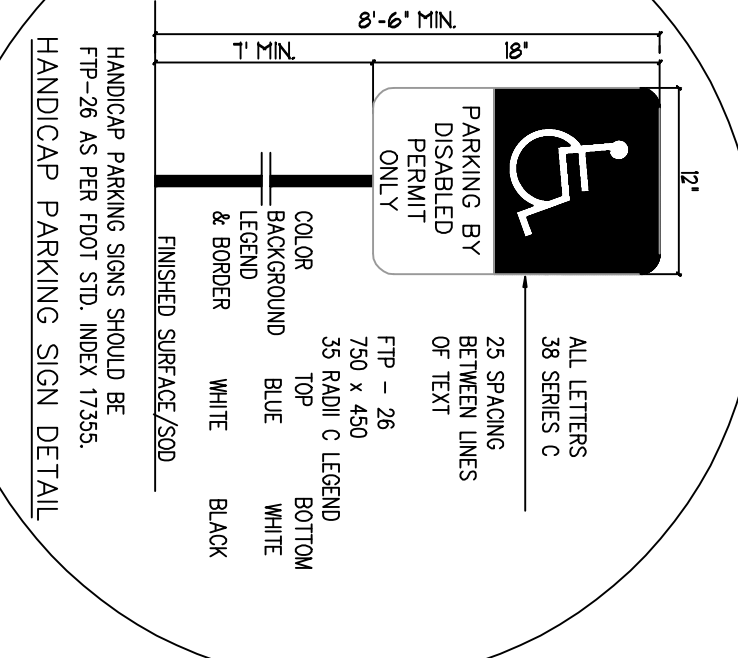
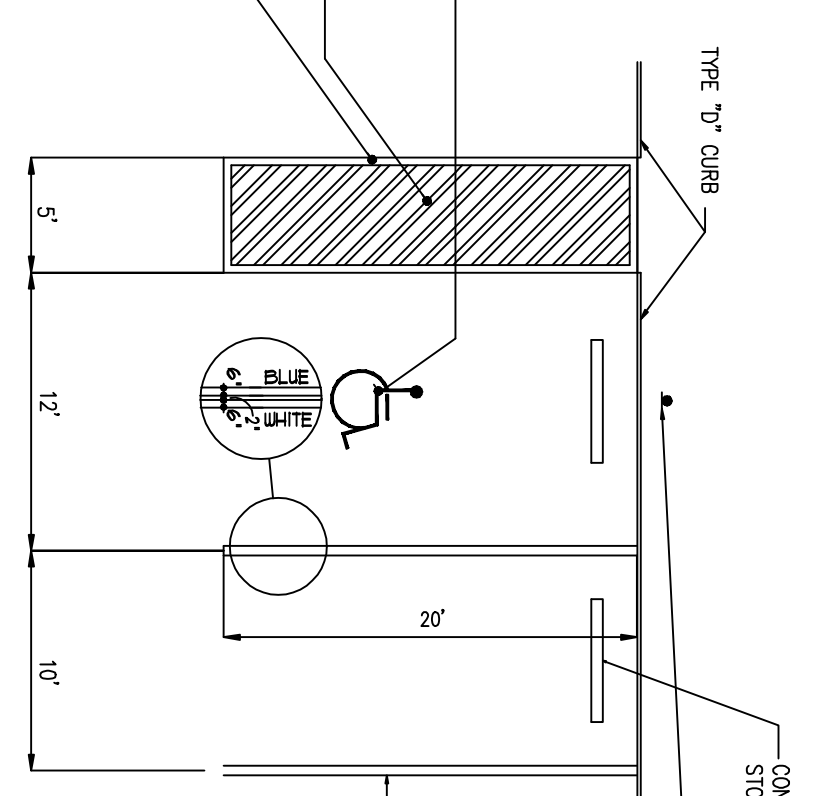
SIDEWALK EXPANSION JOINT LONGITUDINAL SECTION



SIDEWALK SECTION

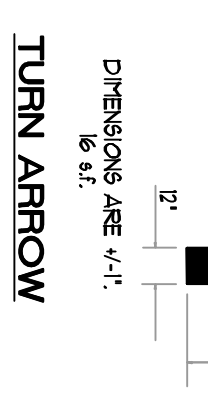
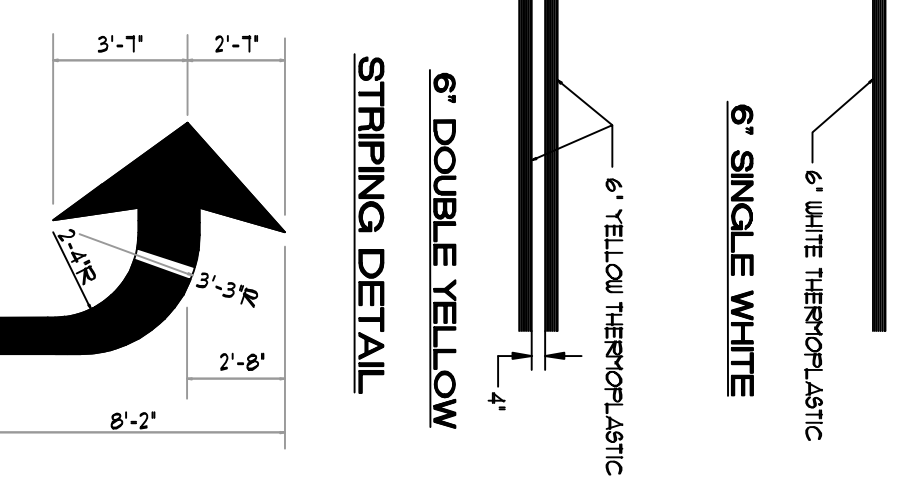
TYPE	LOCATION	ON CENTER
A	F.C. PT. OF CURBS	5'-0"
B	ON SIDEWALKS	10'-0"

TYPICAL SIDEWALK DETAILS

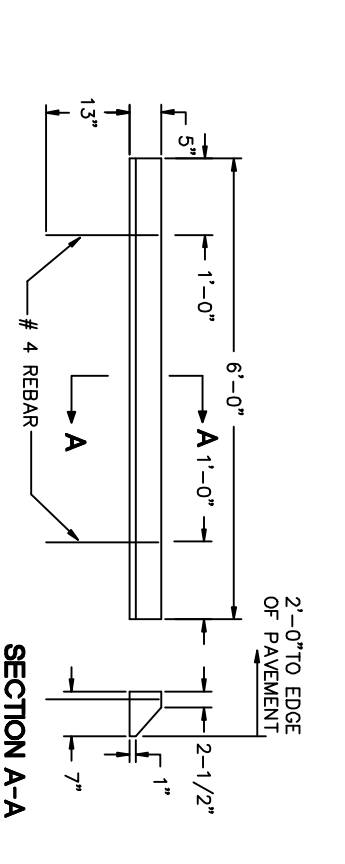


ALL LETTERS
28 SERIES C
BETWEEN LINES
F.P. - 26
750 x 450
TOP
35 RAINU C LENDRO
BOTTOM
WHITE
BLACK

HANDICAP PARKING SIGN DETAIL
HANDICAP PARKING SIGNS SHOULD BE F.P. - 26 AS PER FOOT STD. INDEX 17355.
FINISHED SURFACE: 2800



PAVEMENT MARKING DETAILS



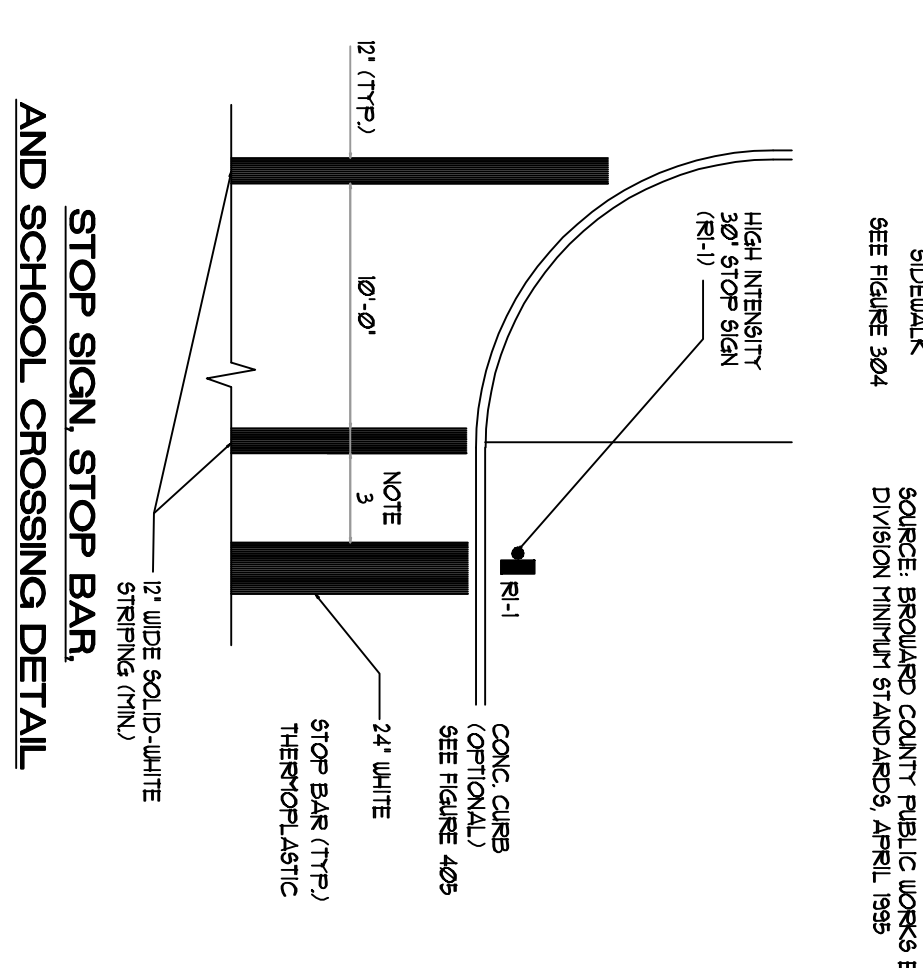
CONCRETE WHEEL STOP DETAIL

PAVING + MARKING + SIGNING NOTES:

- ALL DESIGN, CONSTRUCTION, STUDIES, ETC. SHALL CONFORM TO THE APPLICABLE EDITIONS OF THE FOLLOWING:
 - UNIFORM STATE DEPARTMENT OF TRANSPORTATION MANUAL ON UNIFORM TRAFFIC CONTROL DEVICES (MUTCD)
 - STATE OF FLORIDA DEPARTMENT OF TRANSPORTATION
- F.D.O.T. ROADWAY & TRAFFIC DESIGN STANDARDS (1994)
- STANDARD SPECIFICATIONS (1993) OR LATEST REVISION

PAVING + DRAINAGE NOTES:

- ALL INDEX UNDER THE PROPOSED DRIVEWAY AND PARKING AREAS SHALL BE REMOVED AND REINTEGRATED WITH COMPACT ACCEPTABLE FILL IN ONE-HOOR LIFTS TO 36 PERCENT DENSITY.
- ALL LABOR MATERIALS AND METHODS OF INSTALLATION SHALL BE IN STRICT ACCORDANCE WITH THE MINIMUM ENGINEERING AND CONSTRUCTION STANDARDS ADOPTED BY THE CITY OF COCOONUT CREEK.
- ALL UNDERGROUND UTILITIES AND DRAINAGE IS TO BE INSTALLED BEFORE SUBGRADE IS CONSTRUCTED.
- ALL ELEVATIONS REFER TO NAVD (OR 1988).
- CONTRACTOR SHALL TAKE ALL NECESSARY PRECAUTIONS TO SAFEGUARD ALL UTILITIES TO BE REMOVED BY THE CONTRACTOR AT NO PREMIUM TO THE SUBBED UTILITY. CALL UNCLE (1-800-457-4776) 48 HOURS BEFORE DIGGING.
- ALL CONCRETE SHALL HAVE A MINIMUM COMPRESSIVE STRENGTH OF 2800 PSI AT 28 DAYS.
- CONTRACTOR SHALL VERIFY LOCATION OF EXISTING UNDERGROUND UTILITIES AND INQUIRY ENGINEER OF ANY DISCREPANCIES.
- CONTRACTOR SHALL NOTIFY THE CITY OF COCONUT CREEK ENGINEERING DEPARTMENT AT LEAST 48 HOURS PRIOR TO COMMENCING CONSTRUCTION AND SETTING A PRE-CONSTRUCTION MEETING.
- AS-BUILT DRAWINGS THAT SHOW TOP OF ROCK ELEVATIONS AND COMPLETED DRAINAGE INSTALLATION SHALL BE SUPPLIED TO THE CITY ENGINEER FOR APPROVAL PRIOR TO INSTALLATION OF CURBING SURFACE. AS-BUILT DRAWINGS SHALL BE PROVIDED TO THE CITY ENGINEER FOR APPROVAL PRIOR TO THE STATE OF FLORIDA.
- REFER TO ARCHITECTURAL DRAWINGS FOR SPECIFICATIONS OF FILL MATERIAL DERIVED IN BUILDING PLANS.
- STABILIZED SUBGRADE SHALL HAVE A LOAD BEARING RATIO (LBR) OF 40 AND SHALL BE COMPACTED TO 98% OF MAXIMUM DENSITY AS DETERMINED BY ASTM 1-180.
- 1/4\"/>



STOP SIGN, STOP BAR AND SCHOOL CROSSING DETAIL

- GENERAL NOTES:**
- ALL SIGNPOSTS, MARKERS AND SIGNS SHALL BE IN ACCORDANCE WITH THE MINIMUM ENGINEERING AND CONSTRUCTION STANDARDS ADOPTED BY THE CITY OF COCONUT CREEK.
 - SCHOOL CROSSING SIGNS SHALL TO BE PLACED AT THE FOLLOWING DISTANCE FROM 55.11 ON APPROACH TO THE CROSSWALK: 75-35' R.H. + 200', 35-45' R.H. + 500', 45-55' R.H. + 500'
 - 4 FEET DISTANCE ACROSS TWO-LANE RESIDENTIAL STREETS, 40' FEET DISTANCE FOR LOCAL TO SIX-LANE HIGHWAYS.

A DRC SUBMITTAL FOR:
AMERICAN TOP TEAM

STATE ROAD 7 (US 441)
COCONUT CREEK, BROWARD COUNTY, FLORIDA

CHAMBER & ASSOCIATES, INC.
Professional Engineer
1000 N. W. 10th Street, Suite 200
Fort Lauderdale, FL 33304
Tel: 954.344.1111
Fax: 954.344.1112

380 CHAND GARDENS BLVD.
SUITE 202
BOCA RATON, FLORIDA, 33432
V: (561) 362-2220
F: (561) 362-2224
www.ameriantopteam.com

DATE: 01-28-14
PROJECT: JLC/OFA
JOB NO: 13-175
DATE: 01-28-14

C-3

PAVING + DRAINAGE DETAIL

C-6

AA 0001997