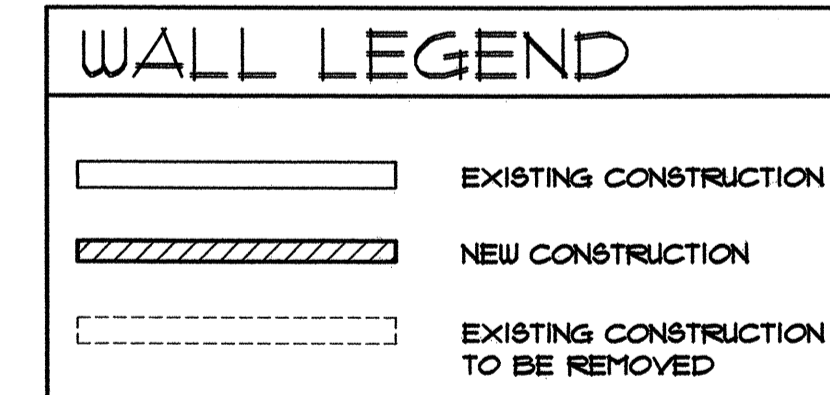
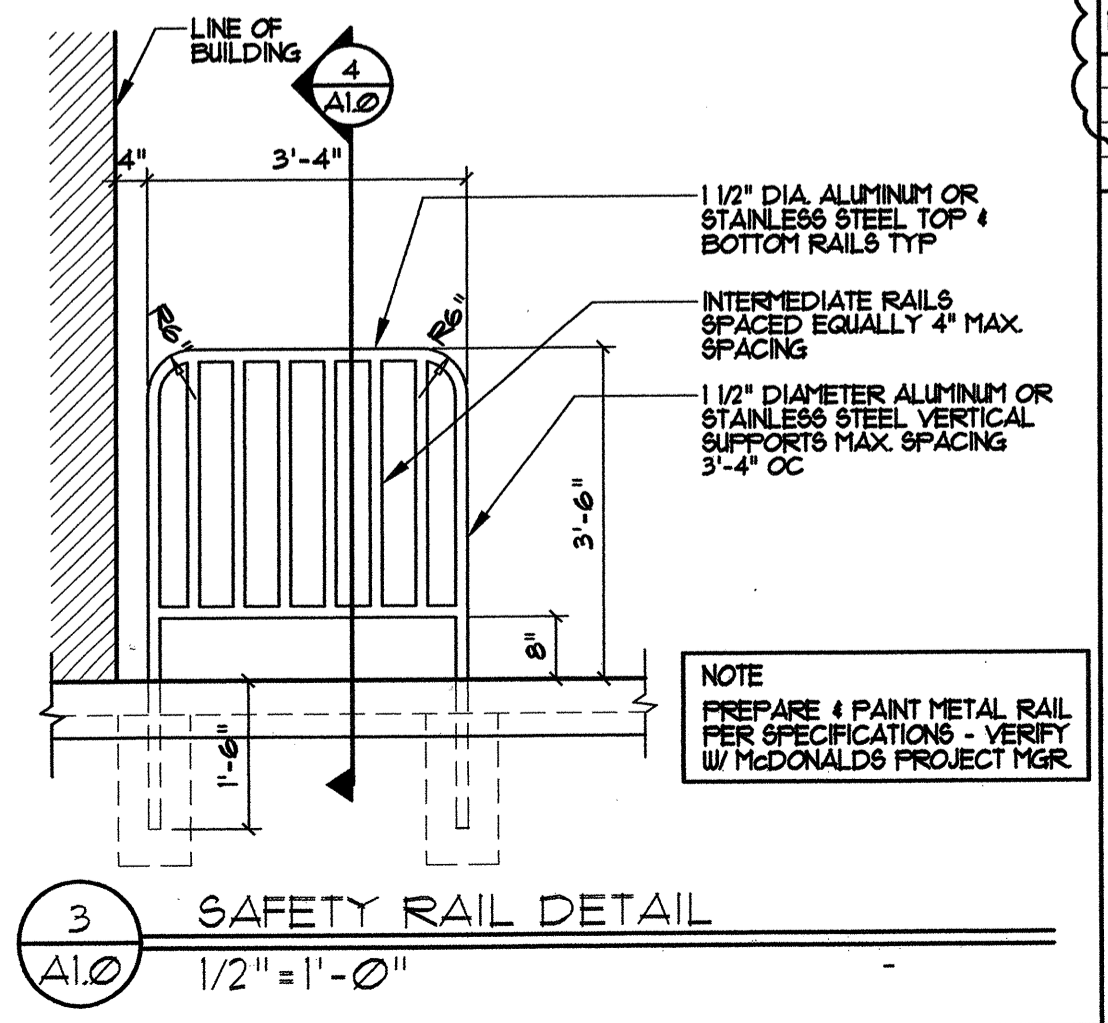
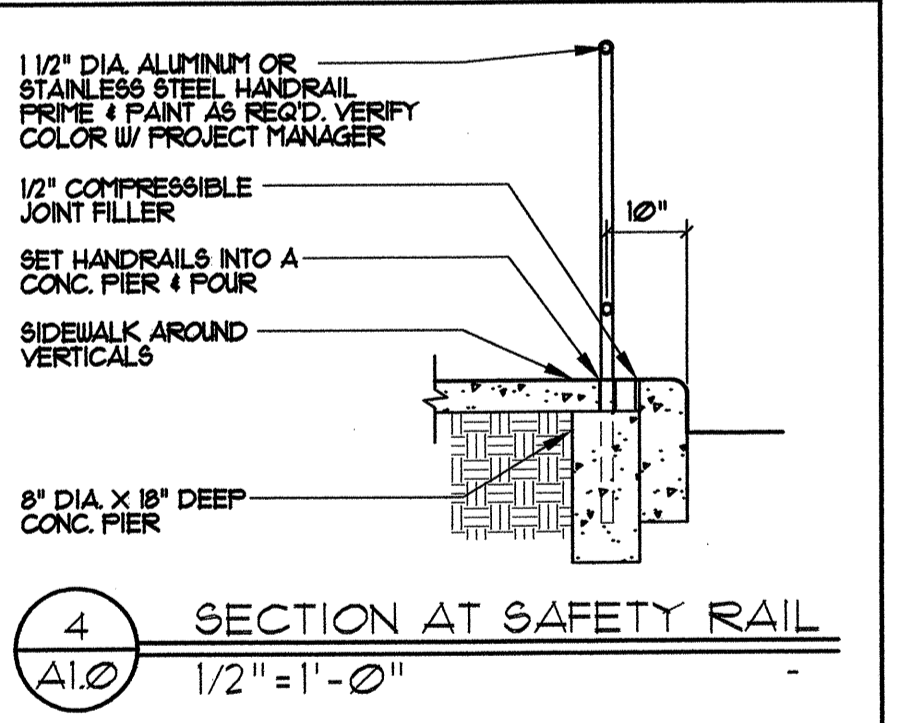


NOTE: GENERAL CONTRACTOR SHALL INSTALL A POLYETHYLENE BARRIER IN AREAS OF REMODEL WORK THAT REQUIRE DUST PROTECTION. MEANS AND METHODS OF INSTALLING THIS POLYETHYLENE BARRIER SHALL BE PER THE GENERAL CONTRACTOR BASED ON EXISTING FIELD CONDITIONS.



1 FLOOR PLAN
1/4" = 1'-0"



MARK	DOOR	MATERIAL	SIZE	TYPE	FRAME	MATL	SIZE
1	ALUM.	3'-0" x 1'-0" x 3/4"	A	ALUM.	SEE ELEV'S		
3	H.M.	4'-0" x 1'-0" x 3/4"	B	H.M.	2" JAMB 4" HD		

GENERAL NOTES:

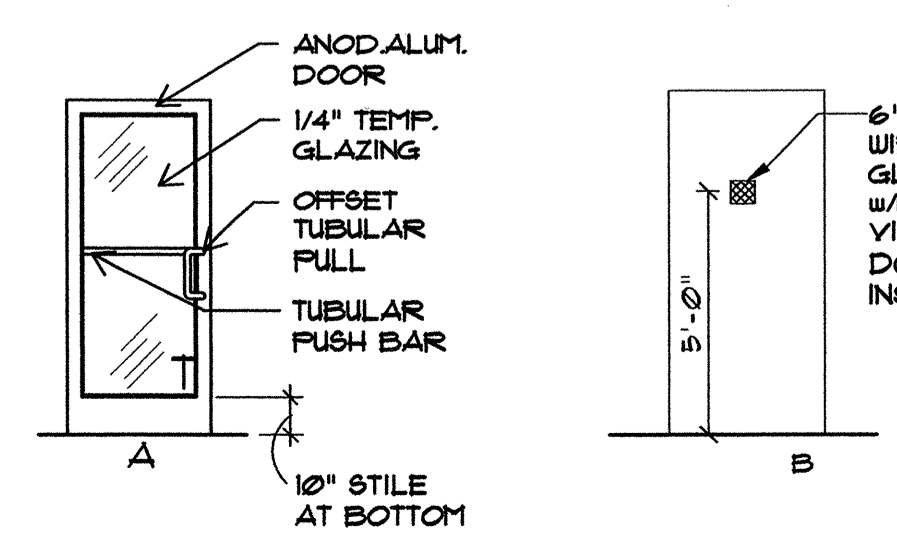
- ALL EXIT DOORS SHALL BE KEYLESS IN THE DIRECTION OF EGRESS.
- THE OPENING FORCE OF ALL EXT. PUSH/PULL DOORS SHALL NOT EXCEED 8 1/2 LBS.
- THE OPENING FORCE OF ALL INTERIOR PUSH/PULL DOORS SHALL NOT EXCEED 5 LBS.
- ALL DOOR HARDWARE SHALL NOT REQUIRE TIGHT GRASPING, TIGHT PINCHING, OR TWISTING OF THE WRIST TO OPERATE.

DOOR #1

- CLOSER: LCN 4021 x 18
- HINGES: OFFSET PIVOT AN81 - A-156.4 GRADE II PROVIDE EXPOSED PARTS OF CAST ALUMINUM ALLOY, AS SUPPLIED BY DOOR MANUFACTURER
- PUSH/PULL HANDLE: KAUNER 100-9 OR HAGER PUSH/PULL SET 164D/V/B
- PANIC HARDWARE: ADA/IFB RITE HFG. CO. 88000 SERIES WITH OUTSIDE CYLINDER ON I/A DOOR ONLY (FINISH TO MATCH STOREFRONT DOOR)
- THRESHOLD: NATIONAL GUARD PRODUCTS, INC. SADDLE TYPE THRESHOLD 325, 36" WIDE x 1/2" RISE (ADA ACCESSIBLE)
- WEATHER STRIPPING: PROVIDE COMPRESSION WEATHER STRIPPING AGAINST FIXED STOPS. AT OTHER EDGES PROVIDE SLIDING WEATHER STRIPPING RETAINED IN ADJUSTABLE STRIP MOUNTED INTO DOOR EDGE. PROVIDE EPDM OR VINYL GASKET WEATHER STRIPPING IN BOTTOM DOOR RAIL ADJUSTABLE FOR CONTACT W/ THRESHOLD.
- SIGN: MOUNT ONTO DOOR TO READ "THIS DOOR MUST REMAIN UNLOCKED WHENEVER THE BUILDING IS OCCUPIED/DURING BUSINESS HOURS."

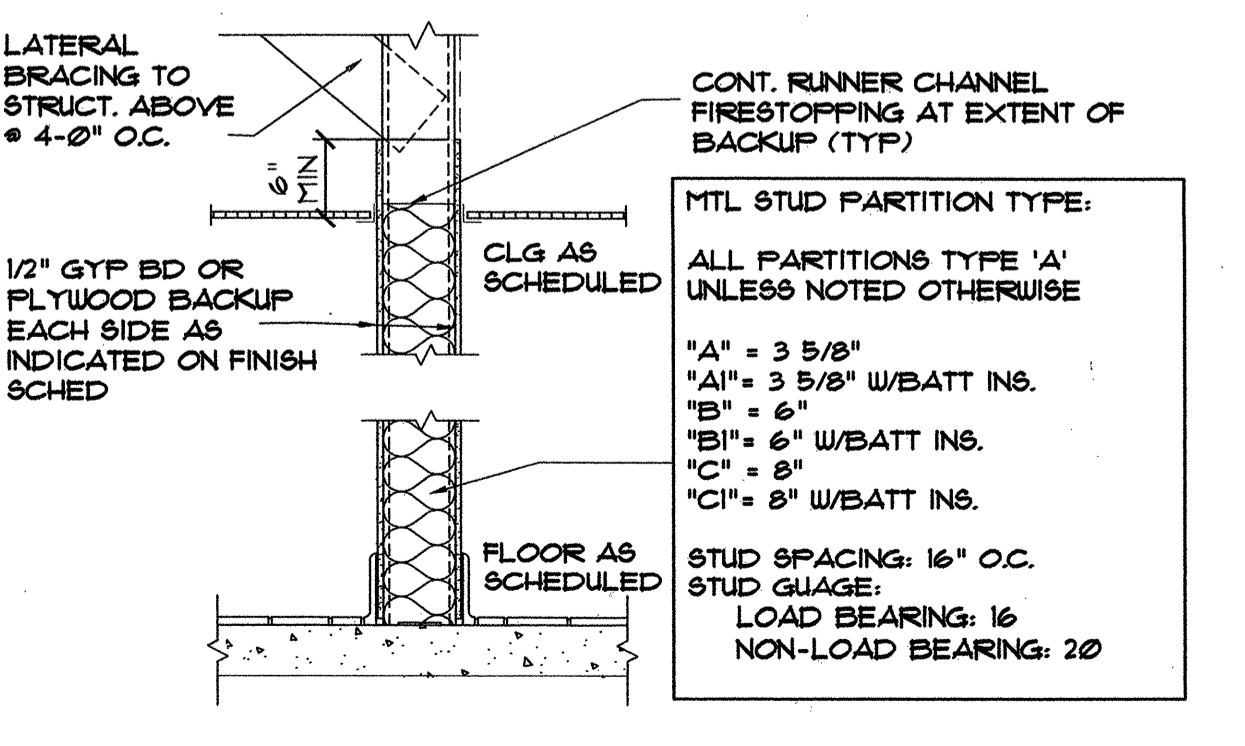
DOOR #3

- CLOSER: 4111 H-CUSH ALUM
- HINGE: HAGER ROTON 180-112HD 83", CLEAR ANODIZED FINISH
- PANIC HARDWARE: EXIT ONLY PANIC, NO CYLINDER VON DUPRIN 95TBEO LD 48" SF78
- FULL HANDLE: VON DUPRIN 952 DT 18 260
- DETEX: MODEL NO. EAX-2500 FLUSH DOOR ALARM
- WEATHER STRIPPING: NATIONAL GUARD 160V. 48" x 84"
- DOOR SILENCERS: HAGER QUANTITY = 3
- 3" SECURITY FRAME VIEW WINDOW W/FLOP BY NATIONAL GUARD. L-VGLF-MD
- THRESHOLD: REFER TO DETAIL 3/A6.0
- DOOR SLEEP: NATIONAL GUARD 99AV 48"
- 1/4" ANODIZED TREAD PLATE (1" TREAD PLATE) - 263" THICK (INTERIOR FACE ONLY)
- 1/2" INCH LATCH GUARD.



GENERAL NOTES

- EXTERIOR DIMENSIONS ARE TO COLUMN REFERENCE LINES AND/OR FACE OF FOUNDATION WALLS UNLESS OTHERWISE NOTED.
- INTERIOR DIMENSIONS ARE TO FACE OF FINISH WALL.
- SEE SITE PLAN FOR SIDEWALKS, RAMPS, ETC.
- DO NOT SCALE DRAWINGS.
- MINIMUM INTERIOR FINISH CLASSIFICATION:
OCCUPANCY A2
NONSPRINKLERED
EXIT ENCLOSURES AND EXIT PASSAGEWAYS: A
CORRIDORS: A
ROOMS AND ENCLOSED SPACES: B
- USE 1/2" PLYWOOD BEHIND CERAMIC TILE UNO TYP.
- GYP BD TO BE USED ON DINING SIDE OF INTERIOR PARTITIONS UNO.
- MATCH EXISTING FINISHES UNO TYP.
- VERIFY EQUIP, MFG, ELEC, & PLUMBING REQUIREMENTS W/ KITCHEN EQUIPMENT SUPPLIER.
- GC TO REQUEST & FOLLOW ADA REPORT WHEN AVAILABLE



McDonald's USA, LLC
Hartley + Purdy Architecture, Inc.
SCOTT J. PURDY
AR 91876

DATE: 03.08.13
REV: 1
CODE COMMENTS: 04.15.13
DRC COMMENTS: 03.08.13

PREPARED BY: McDonald's USA, LLC
DRAWN BY: MB
STD. ISSUE DATE: 02.22.13
REVIEWED BY: SUP
DATE ISSUED: 02.22.13

DESCRIPTION: MAJOR REMODEL PROGRAM
COLOR SCHEME: KAHN
GRADE FINISH: STONE
SITE ID: N. STATE ROAD 7
CONTRACT NO.: 17010
CONTRACTOR: COCONUT CREEK, FLORIDA

SHEET NO. 1302.04
A1.0
AA-0003276