

**CITY OF COCONUT CREEK TREE PROTECTION NOTES:**

- Place and maintain protective barriers around the drip line of all trees to be retained on the site to prevent their destruction or damage. The protective barriers shall be at least four (4) feet in height and conspicuously colored to be seen easily by operators of trucks and other equipment. Protective barriers shall be constructed of sturdy material (not flagging or ribbons) and shall be installed prior to and during construction and/or land development.
- (2) Not store or use materials or equipment within the drip line of any tree to be retained on site unless the activity is being done to protect trees;
- (3) Not discharge or contaminate the soil within the drip line of any tree to be retained on site with any construction materials such as paint, oil, solvents, petroleum products, asphalt, concrete, mortar, or other materials that may cause adverse impacts;
- (4) Clearing of vegetation within the dripline of trees designated for preservation shall only be by hand or light rubber wheeled equipment that will not damage tree roots; said equipment shall be a maximum of forty-eight (48) inches wide, tire to tire, with a maximum weight of three thousand five hundred (3,500) pounds;
- (5) Utilize retaining walls and drywells where needed to protect trees to be preserved from severe grade changes;
- (6) Pruning of trees to be preserved shall be in accordance with the standards for pruning established by ANSI A-300.
- (7) Make no attachments, other than those of a protective and nondamaging nature, to any tree to be retained on the site;
- (8) Not change the natural grade above the root system within the drip line of any tree to be retained on site unless it can be demonstrated to the city that it will not damage any tree;
- (9) Avoid any encroachments, excavations or severe grade changes within the drip line of preserved trees unless it can be demonstrated to the city that it will not impact any tree; and
- (10) Not cause soil compaction within the dripline of any tree to be retained on site; and
- (11) Any trees designated to be preserved which are damaged during construction shall promptly be repaired.
- (o) Protection of trees. No attachments, other than those of a protective and nondamaging nature, shall be attached to any tree, except those trees approved by the city to be eliminated and not to be retained or relocated.

**EXISTING TREE INVENTORY**

TREE NO.	COMMON NAME	SIZE (DBH. HT.X SPR.)	CONDITION	DISPOSITION
1.	SABAL PALM	12" DBH. 40' OA.	GOOD	REMAIN
2.	SABAL PALM	12" DBH. 25' OA.	GOOD	RELOCATE
3.	SABAL PALM	12" DBH. 20' OA.	GOOD	RELOCATE
4-6.	SABAL PALM	12" DBH. 25' OA.	GOOD	RELOCATE
7.	DWF.POINCIANA	4" DBH. 12'X12' SPR.	GOOD	REMAIN
8.	LIVE OAK	2" DBH. 10'X5' SPR.	GOOD	RELOCATE
9.	SABAL PALM	12" DBH. 25' OA.	GOOD	RELOCATE
10-11	SABAL PALM	12" DBH. 20'-25' OA.	GOOD	REMAIN
12-14	LIGUSTRUM	8'X8' SPR.	GOOD	RELOCATE
15-17.	SABAL PALM	12" DBH. 18'-20'	GOOD	RELOCATE
18.	LIVE OAK	16" DBH. 25'X20'	GOOD	REMAIN
19.	LIVE OAK	4" DBH. 12'X6'	GOOD	REMAIN
20.	ROYAL POINCIANA	14" DBH. 35'X30'	GOOD	REMAIN
21.	PINK TABEBUIA	1" DBH. 10'X5' SPR.	GOOD	REMAIN
22.	PINK TABEBUIA	3" DBH. 12'X10' SPR.	GOOD	REMAIN
23.	PINK TABEBUIA	14" DBH. 30'X20' SPR.	GOOD	REMAIN
24.	PINK TABEBUIA	8" DBH. 25'X10' SPR.	GOOD	REMAIN
25.	PINK TABEBUIA	6" DBH. 20'X10' SPR.	GOOD	REMAIN
26.	PINK TABEBUIA	6" DBH. 15'X7' SPR.	GOOD	REMAIN
27.	PINK TABEBUIA	12" DBH. 30'X15' SPR.	GOOD	REMAIN
28.	PINK TABEBUIA	3" DBH. 12'X10' SPR.	POOR	REMAIN
29.	MAHOGANY	8" DBH. 20'X15' SPR.	GOOD	REMAIN
30.	LIVE OAK	1.5" DBH. 8'X4' SPR.	DEAD	REMOVE/MITIGATE
31.	LIVE OAK	1.5" DBH. 8'X4' SPR.	DEAD	REMOVE/MITIGATE
32.	LIVE OAK	2" DBH. 10'X4' SPR.	DEAD	REMOVE/MITIGATE
33.	LIVE OAK	2" DBH. 10'X4' SPR.	DEAD	REMOVE/MITIGATE
34.	SATIN LEAF	3" DBH. 18'X5' SPR.	FAIR	REMOVE/MITIGATE
35-38.	SABAL PALM	12" DBH. 18' OA.	GOOD	RELOCATE
39-40.	SABAL PALM	12" DBH. 20' OA.	GOOD	RELOCATE
41.	MAHOGANY	12" DBH. 30'X25'	GOOD	REMOVE/MITIGATE
42.	PINK TABEBUIA	14" DBH. 30'X20'	FAIR	REMOVE/MITIGATE
43.	LIVE OAK	16" DBH. 35'X25'	GOOD	REMAIN
44.	MAHOGANY	6" DBH. 18'X8'	GOOD	RELOCATE
45.	DWF. POINCIANA	4" DBH. 12'X12'	GOOD	REMAIN

TREE CANOPY REMOVAL = 1,114 SF. REFER TO DATA TABLE ON SHEET L-1

NO TREES SHALL BE REMOVED OR RELOCATED WITHOUT AN APPROVED TREE REMOVAL/RELOCATION PERMIT ISSUED BY THE CITY OF COCONUT CREEK  
 NO TREES SHALL BE REMOVED OR RELOCATED WITHOUT AN APPROVED TREE REMOVAL/RELOCATION PERMIT ISSUED BY THE CITY OF COCONUT CREEK

**RELOCATION / TRANSPLANTING NOTES**

All relocated trees less than 9" (measured 12" above grade) shall be relocated using a 90" tree spade by an operator experienced and trained in this area. The Landscape Architect will supply a list of local companies capable of this type of work upon request. Contractor is responsible to root prune trees a min. of 6 weeks prior to relocation.

Trees larger than 9" cal. (measured 12" above grade) shall be root pruned by hand by a certified arborist. Live Oaks shall be root pruned a min of 12 weeks in prior to relocation. Landscape Architect's approval and special relocation specifications shall be required if root pruning 12 weeks prior to relocation is not possible. No species of tree shall be moved with less than 6 weeks between root pruning and relocation.

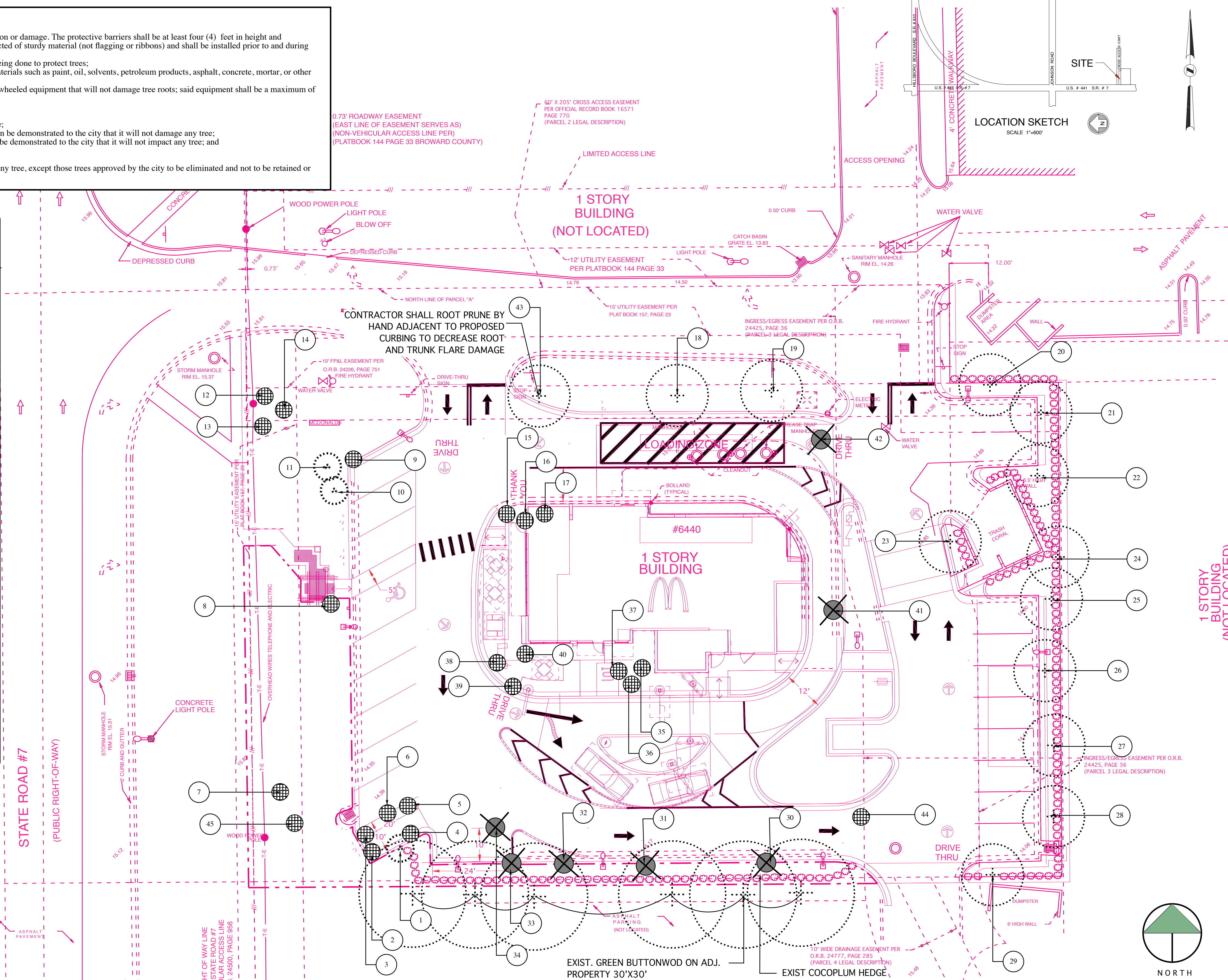
Trees larger than 9" (measured 12" above grade) shall be relocated by means of a crane by a company experienced and trained in this area. The Landscape Architect will supply a list of local companies capable of this type of work upon request.

It is the contractor's responsibility to install 2 temporary irrigation systems to cover each of the trees scheduled to be relocated. This includes the water and power source. Each shade tree shall have two flood bubblers within a soil berm around the rootball. Each palm shall have one flood bubbler within a soil berm around the rootball.

A. One system shall be installed prior to tree relocation. Each tree scheduled to be relocated shall be irrigated immediately following root pruning. Trees not scheduled for root pruning shall be irrigated at the same time and by the same method as root pruned trees.  
 B. A second system irrigating each relocated tree shall be installed immediately following relocation.

Both of these systems will irrigate on a schedule determined by those responsible for the relocation of the trees, and in consideration of tree species and soil type.

Installation of relocated trees shall also adhere to all details and specifications applicable to nursery stock.



**LEGEND**

- EXISTING TREE TO REMAIN
- EXISTING PALM TO REMAIN
- EXISTING TREE/PALM TO REMOVE
- EXISTING TREE/PALM TO RELOCATE
- RELOCATED TREE
- EXISTING SHRUBS TO REMAIN

**M. L. A. P. Inc.**  
 Landscape Architectural Services  
 Reg. LA-666695  
 1016 NE 45th Street, Oakland Park, FL 33334  
 E: mlagroup@yahoo.com  
 Ph: 954-763-4071  
 Fax: 954-639-9668

REVISIONS:

REV: DRC 3-7-13
REV: DRC 4-2-13

SHEET TITLE:  
**EXISTING TREE DISPOSITION PLAN**

**McDONALD'S**  
 6440 N. STATE ROAD 7  
 COCONUT CREEK, FLORIDA

PROJECT:  
 LOCATION CODE NUMBER  
 009 - 1502

SEAL:

SCALE: 1/16"=1'0"

DATE DRAWN: 1-25-13

SHEET NO.  
**L-2**