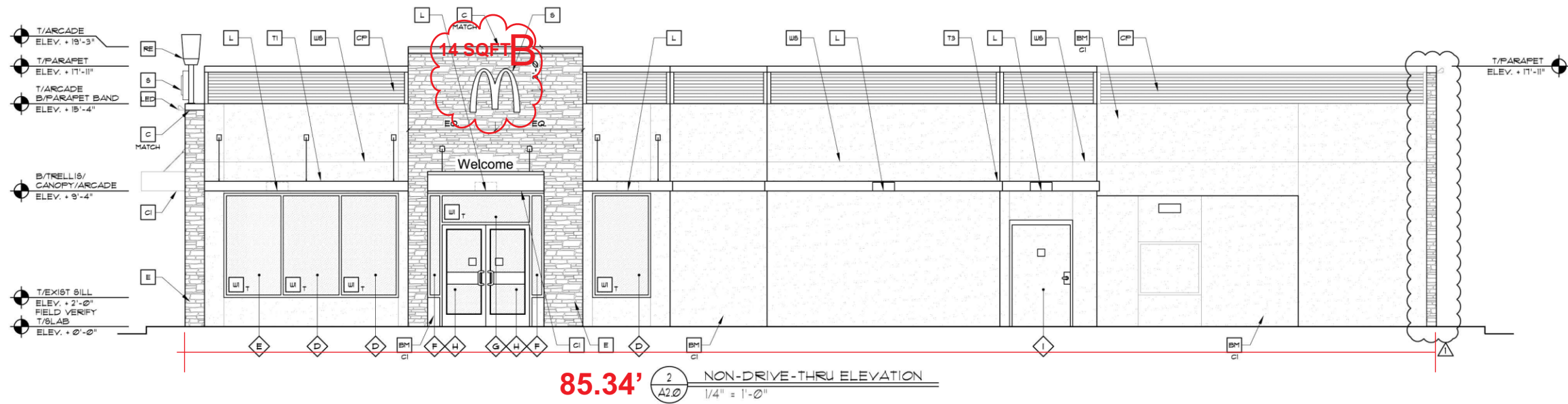
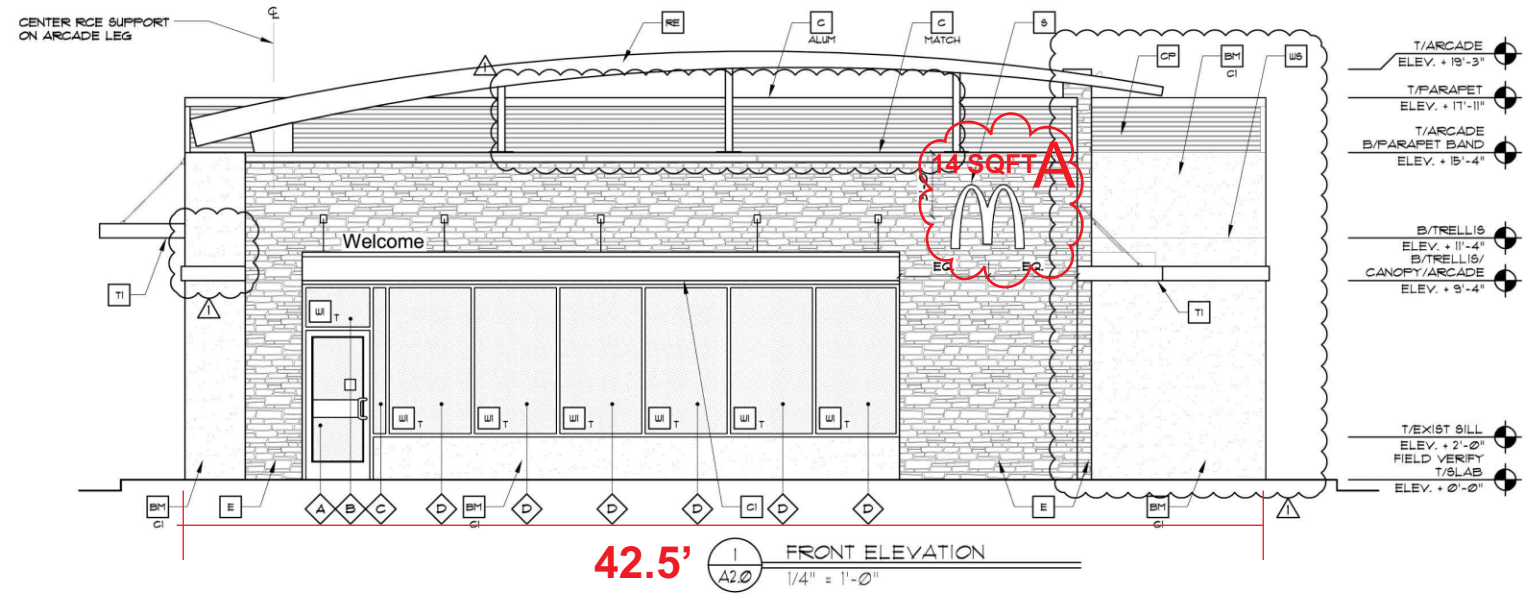


BUILDING DATA	
WIND VELOCITY (mph)	170
IMPORTANCE FACTOR	1.00
BUILDING CATEGORY	II
EXPOSURE CATEGORY	C
INTERNAL PRESSURE COEFFICIENT +/- (ENCLOSED BUILDING)	0.18
MEAN ROOF HEIGHT (ft)	17.92'
BUILDING WIDTH (ft)	42.5'
BUILDING LENGTH (ft)	85.34'
ROOF SLOPE (X : 12)	0

FLORIDA BUILDING CODE - 2010 - PRESSURES NOTED ARE ASD PRESSURES, A 0.7 FACTOR HAS BEEN APPLIED

WALL OPENINGS SCHEDULE							
OPENING MARK	OPENING DESCRIPTION	LOCATION ZONE	OPENING ELEVATION	OPENING WIDTH	OPENING HEIGHT	MAX POSITIVE PRESSURE psf	MAX NEGATIVE PRESSURE psf
A	GLASS DOOR	5	3.5	3	7	32.93	-41.41
B	FIXED GLASS	5	8.08	3	2.17	36.59	-48.79
C	FIXED GLASS	4	5.58	0.67	1.17	36.59	-38.64
D	FIXED GLASS	4	5.58	4	1.17	32.93	-35.98
E	FIXED GLASS	5	5.58	4	1.17	32.93	-41.41
F	FIXED GLASS	4	5.58	0.83	1.17	36.59	-38.64
G	FIXED GLASS	4	8.08	6	2.17	35.06	-38.11
H	GLASS DOOR	4	3.5	3	7	32.93	-35.98
I	SERVICE DOOR	5	3.5	4	7	32.93	-41.41
J	FIXED GLASS	4	7.34	4	1	36.59	-38.64
K	SERVICE WINDOW	4	4.67	2	3	36.59	-38.64
L	FIXED GLASS	4	5.58	3	1.17	32.93	-35.98



KEY NOTES:

- A METAL AWNING - UNDER SEPARATE PERMIT, COLOR TO BE ALTERNATING STRIPES TO MATCH PANTONE 193C AND 193C
- BH1 NEW CEMENTITIOUS FINISH
- C1 COLOR: BENJAMIN MOORE
- C2 ALEXANDRIA BEIGE BH-HC-11
- C3 MONROE BISQUE BH-HC-26

- C METAL COPING - COLOR: ALUMINUM
- C1 METAL COPING - COLOR TO MATCH SURROUNDINGS MATERIAL
- C2 NEW ALUMINUM CANOPY 36x16 BY OTHERS (COLOR: YELLOW)
- C3 NEW ALUMINUM CANOPY TIE-BACK BY OTHERS

- C3 NEW ALUMINUM CANOPY 18x16 BY OTHERS (COLOR: YELLOW)
- C4 CEMENTITIOUS CONTROL JOINT
- CP CORRUGATED METAL BAND BY METAL ERA - STEVE GARNETT - 800-358-2162 - ALUMINUM - 1/8" 19" PANEL 24 GAUGE (COLOR: CITYSCAPE)
- E STONE VENEER FINISH, QUENS CORNING, CULTURED STONE - PRO-FIT LEDGERSTONE, COLOR SOUTHWEST PF-8019 - CREAM GROUT

- EJ EXPANSION JOINT
- L LIGHT FIXTURE (WALL SCONCE) - SEE ELECTRICAL
- LED LIGHT FIXTURE, UP AND DOWN LIGHT - SEE ELECTRICAL
- LP LIGHT FIXTURE (PARAPET LIGHT) - SEE ELECTRICAL
- ML METAL LETTERING - BY OTHERS

- PB PIPE BOLLARD - PAINTED YELLOW
- RE 48 FT ROOF ELEMENT 4 SUPPORT BY OTHERS - SEE ROOF PLAN AND SECTIONS
- S McDONALD'S NEXT-GEN SIGNAGE BY OTHERS - UNDER SEPARATE PERMIT.
- TI ALUMINUM TRELLIS
- T3 2X8 WALL FASCIA

- W1 EXTERIOR WINDOW ASSEMBLY - SEE A3.0
- T TEMPERED GLASS
- W2 DRIVE-THRU WINDOW BY READY ACCESS CONFIRM MODEL, OPTIONS, AND SIZE WITH MCD PROJECT MANAGER. OPTIONS INCLUDE: TRANSOM (SHOWN), AIR CURTAIN, FLY/TRANSCOM 4 432 SQ IN MAX SERVICE OPENING (WHERE REGD BY CODE)
- SLIDE DIRECTION: RL - RIGHT TO LEFT, LR - LEFT TO RIGHT

- W3 ANICO VINYL MID-WALL WEEP & SCREED OR APPROVED EQUAL

PREPARED BY: **Hartley + Purdy Architecture, Inc.**
 1711 North Himes Avenue, Tampa, Florida 33607
 PH 813.253.8083 Fax 813.253.4559 Web Site: www.hartleyandpurdy.com

PREPARED FOR: **McDonald's USA, LLC**
 These drawings and specifications are the confidential and proprietary information of McDonald's USA, LLC. The contract documents were prepared for use on this specific site in conjunction with its issue date and are not to be used for any other project without the written authorization of McDonald's USA, LLC. Reproduction of these drawings for reference or example on another project requires the services of properly licensed architects and engineers. Reproduction of the contract documents for reuse on another project is not authorized.

DATE ISSUED: 02-22-13

MAJOR REMODEL PROGRAM

DESCRIPTION: COLOR SCHEME: HAWKI ARCADE FINISH: STONE

6440 N. STATE ROAD 7, #1010, COCONUT CREEK, FLORIDA 33093-1922

1302.04

A2.0

AA-0003276