

City of Coconut Creek

InterOffice Memorandum

To: File (electronic site plan file)

Date: August 16, 2012

From: Jim Hetzel
Sustainable City Coordinator

Subject: Mc Donalds - Coral Creek Shops -
Landscape Uplighting

The following minor adjustment to the approved Mc Donald's at Coral Creek Shops site plan has been accepted by the Development Review Committee.

Requested Change: Modification to Site Lighting

This memo shall serve as formal acceptance of the following:

- Installation of landscape uplighting fixtures
- Approximately 18 fixtures within the landscape area

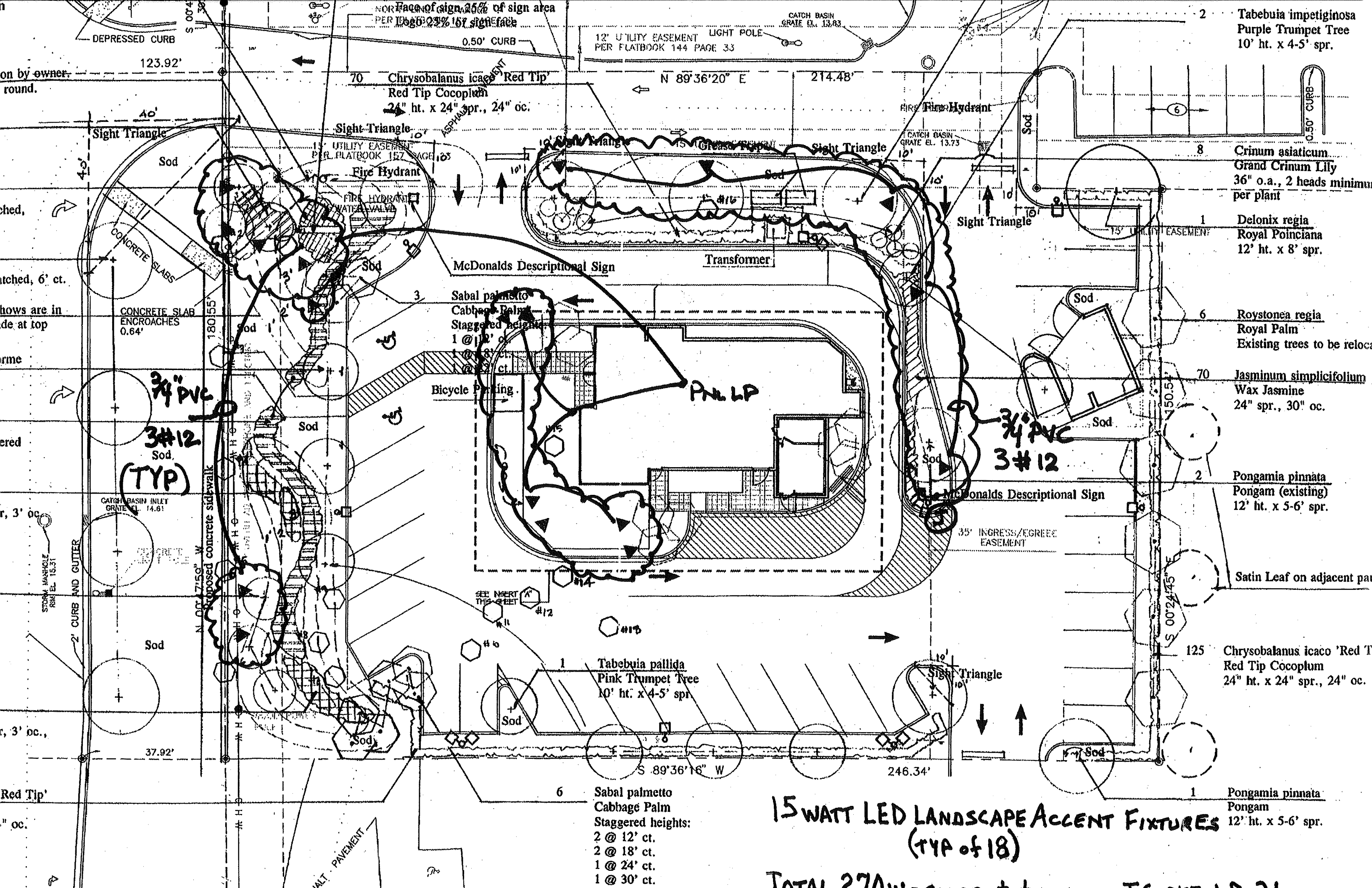
Summary of Requested Changes:

The purpose of this modification is to provide accent lighting for landscape material around the McDonald's property. There would be approximately 18 fixtures with 10.8 watt capacity. The electrical contractor for the project has indicated that the inclusion of these fixtures will not affect the overall photometrics for the site in a manner that creates spillover. Attached to this memo is a letter from the electrical engineer, approval letter from McDonald's, and a copy of the site plan with the locations of the lights.

Applicant is currently seeking permits for the site.

This memo will be filed electronically on the network in the site plan folder.

CC: Via email
Sharon Vollmer, Landscape Coordinator
Dave Poplawski, Landscape Inspector
Terrye Souffer, Code Compliance Officer



2 *Tabebuia impetiginosa*
Purple Trumpet Tree
10' ht. x 4-5' spr.

8 *Crinum asiaticum*
Grand Crinum Lily
36" o.a., 2 heads minimum
per plant

1 *Delonix regia*
Royal Poinciana
12' ht. x 8' spr.

6 *Roystonea regia*
Royal Palm
Existing trees to be relocated

70 *Jasminum simplicifolium*
Wax Jasmine
24" spr., 30" oc.

2 *Pongamia pinnata*
Pongam (existing)
12' ht. x 5-6' spr.

Satin Leaf on adjacent property

125 *Chrysobalanus icaco* 'Red Tip'
Red Tip Cocoplum
24" ht. x 24" spr., 24" oc.

1 *Pongamia pinnata*
Pongam
12' ht. x 5-6' spr.

12' UTILITY EASEMENT LIGHT POLE
PER FLATBOOK 144 PAGE 33

70 *Chrysobalanus icaco* 'Red Tip'
Red Tip Cocoplum
24" ht. x 24" spr., 24" oc.

3 *Sabal palmetto*
Cabbage Palm
Staggered heights:
1 @ 12' ct.
1 @ 18' ct.
1 @ 24' ct.

1 *Tabebuia pallida*
Pink Trumpet Tree
10' ht. x 4-5' spr.

6 *Sabal palmetto*
Cabbage Palm
Staggered heights:
2 @ 12' ct.
2 @ 18' ct.
1 @ 24' ct.
1 @ 30' ct.

15 WATT LED LANDSCAPE ACCENT FIXTURES
(TYP of 18)

TOTAL 27 WATT LED LANDSCAPE ACCENT FIXTURES

123.92'

214.48'

N 89°36'20" E

40'

180.55'

37.92'

246.34'

S 89°36'16" W

S 00°24'45" E

N 00°17'50" W

3#12
Sod
(TYP)

3/4" PVC
3#12
Sod

P.N.L.P.

Bicycle Parking

McDonalds Descriptive Sign

Transformer

Sight Triangle

Sight Triangle

Sight Triangle

Sight Triangle

Sight Triangle

CONCRETE SLABS

CONCRETE SLAB
ENCROACHES
0.64'

CATCH BASIN INLET
GRATE EL. 14.81

CATCH BASIN
GRATE EL. 13.73

12' UTILITY EASEMENT
PER FLATBOOK 157 PAGE 105

FIRE HYDRANT

FIRE HYDRANT
WATER VALVE

FIRE HYDRANT

CATCH BASIN
GRATE EL. 13.73

15' UTILITY EASEMENT

35' INGRESS/EGRESS
EASEMENT

SEE INSERT
THIS SHEET

2' CURB AND CUTTER

Sod

Sod

#11

#12

#15

#16

#17

#18

#19

#20

#21

#22

#23

#24

#25

#26

#27

#28

#29

#30

#31

#32

#33

#34

#35

#36

#37

#38

#39

#40

#41

#42

#43

#44

#45

#46

#47

#48

#49

#50

#51

#52

#53

#54

#55

#56

#57

#58

#59

#60

#61

#62

#63

#64

#65

#66

#67

#68

#69

#70

#71

#72

#73

#74

#75

#76

#77

#78

#79

#80

#81

#82

#83

#84

#85

#86

#87

#88

#89

#90

#91

#92

#93

#94

#95

#96

#97

#98

#99

#100



August 9, 2012

To: City of Coconut Creek
4800 West Copans Road
Coconut Creek, FL 33063

Re: Permit #12-1880
McDonald's Restaurant
6440 N. State Road 7

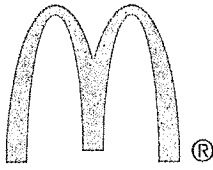
Attn: Zoning Department

Clarification:

The 10.8 watt landscape uplighting fixtures which are being installed to accent the trees will not affect the foot candle spillover of the existing site lighting. The actual photometric study which is on file should not be altered with respect to the paved surface readings or property line readings. If an actual photometric study is desired, one will be performed at the City's request after installation is complete.

A handwritten signature in blue ink, appearing to read "James Seitz".

James Seitz
Star Electrical Contractors, Inc
EC0002303



McDonald's USA, LLC
Florida Region
10150 Highland Manor Drive, Suite 470
Tampa, FL 33610
(813) 630-9634
Fax: (813) 200-3831
Email: tammy.rollins@us.mcd.com

AUTHORIZATION

**Re: McDonald's Sites: 6440 North SR 7
Coconut Creek, FL**

To Whom It May Concern:

**Please accept this letter as approval for the landscape lighting for the
above McDonald's location.**



Michael Motta, Development Director

