

TECHNOLOGICAL UNIVERSITY OF MIAMI

3700 COCONUT CREEK PARKWAY, COCONUT CREEK, FLORIDA 33066

STRIPING PERMIT ONLY

LOCATION MAP

SITE STATS (per Proposed Conditions)

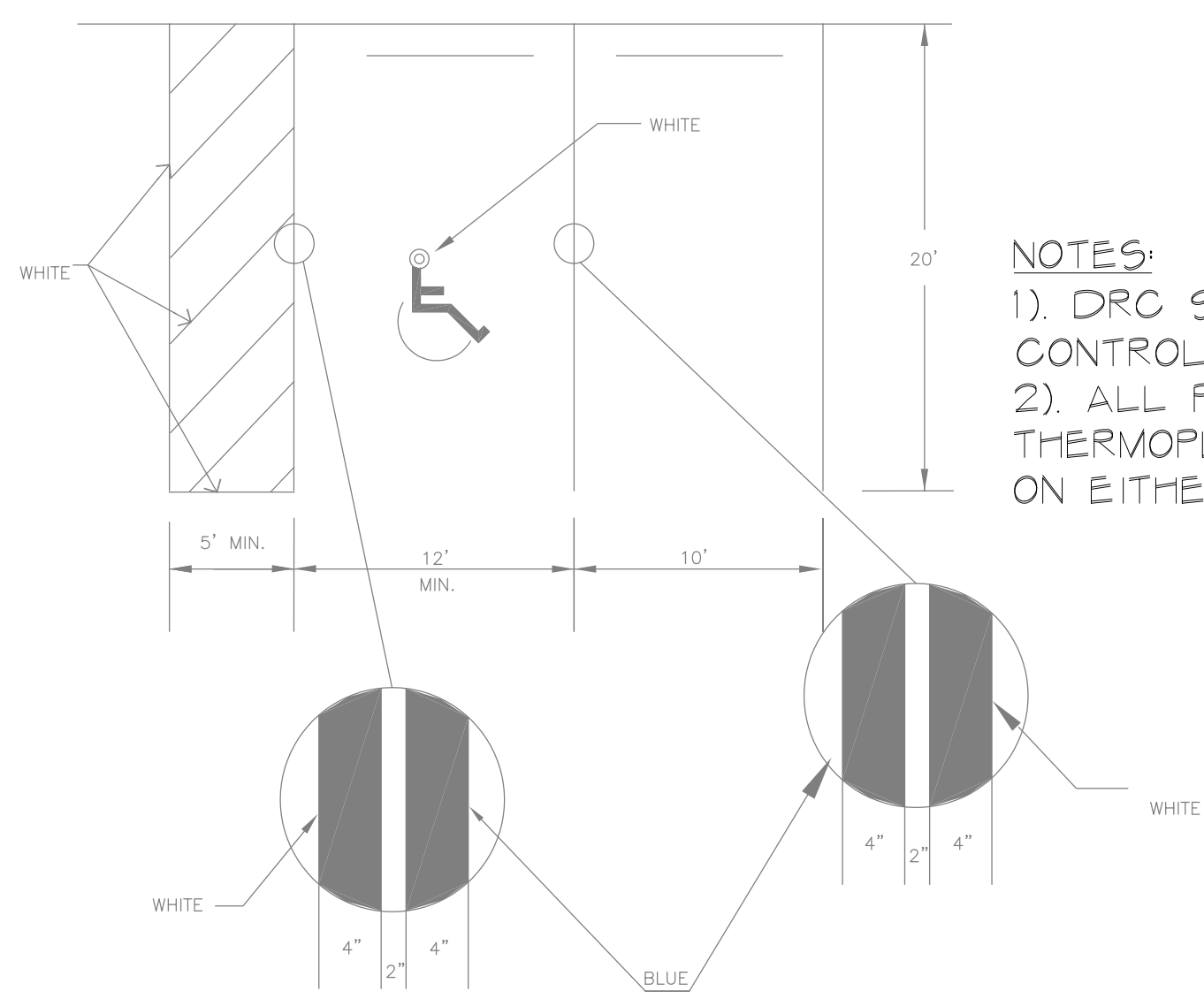
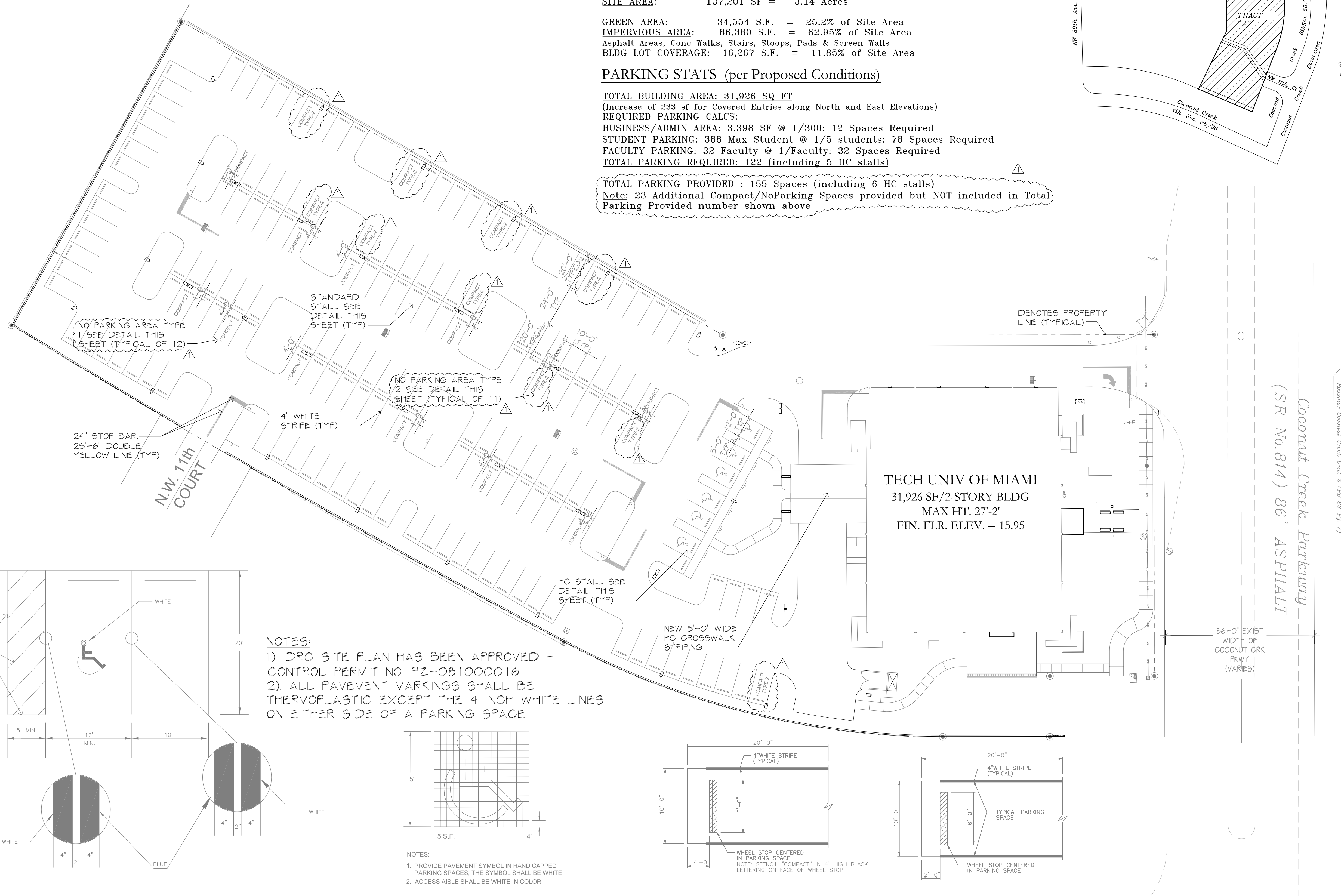
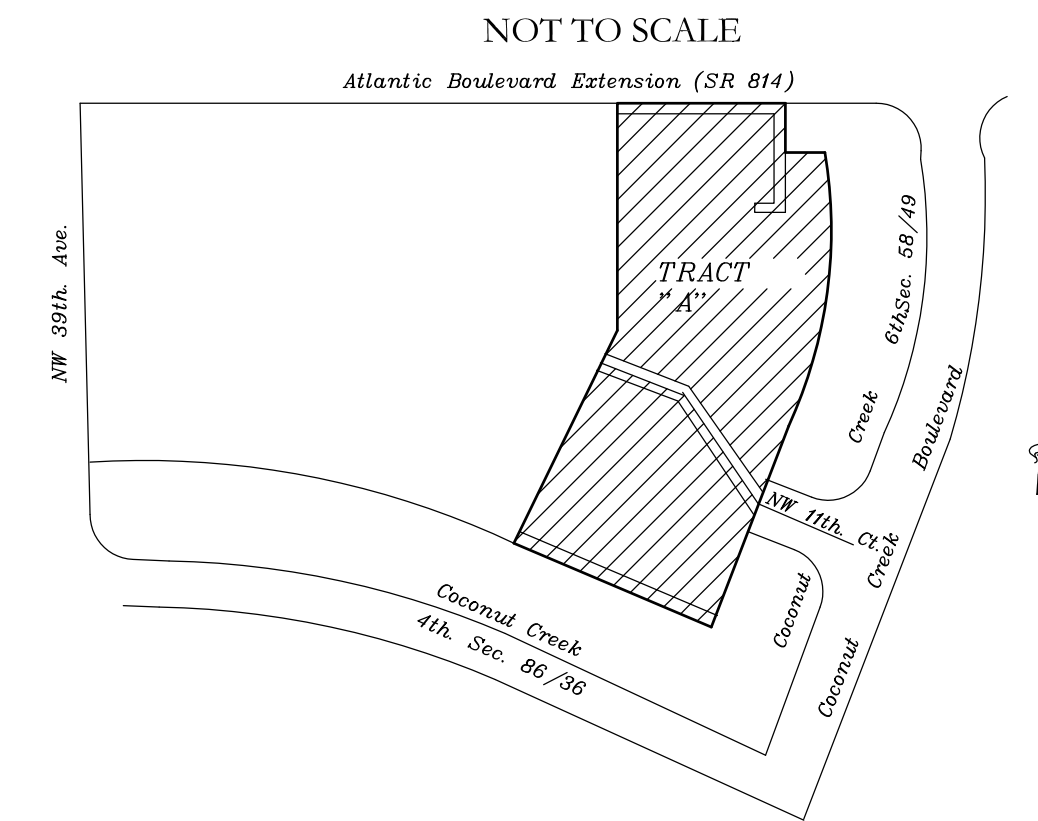
SITE AREA: 137,201 SF = 3.14 Acres

GREEN AREA: 34,554 S.F. = 25.2% of Site Area
 IMPERVIOUS AREA: 86,380 S.F. = 62.95% of Site Area
 Asphalt Areas, Conc Walks, Stairs, Stoops, Pads & Screen Walls
 BLDG LOT COVERAGE: 16,267 S.F. = 11.85% of Site Area

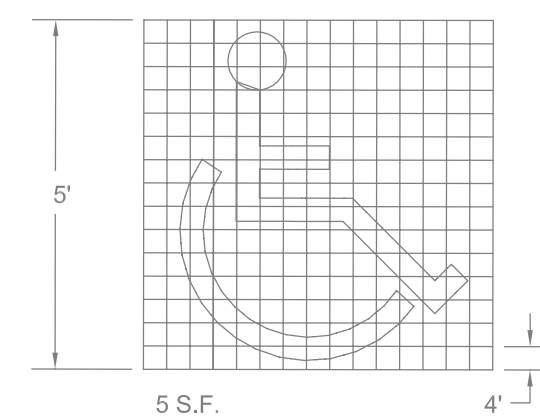
PARKING STATS (per Proposed Conditions)

TOTAL BUILDING AREA: 31,926 SQ FT
 (Increase of 233 sf for Covered Entries along North and East Elevations)
 REQUIRED PARKING CALCS:
 BUSINESS/ADMIN AREA: 3,398 SF @ 1/300: 12 Spaces Required
 STUDENT PARKING: 388 Max Student @ 1/5 students: 78 Spaces Required
 FACULTY PARKING: 32 Faculty @ 1/Faculty: 32 Spaces Required
 TOTAL PARKING REQUIRED: 122 (including 5 HC stalls)

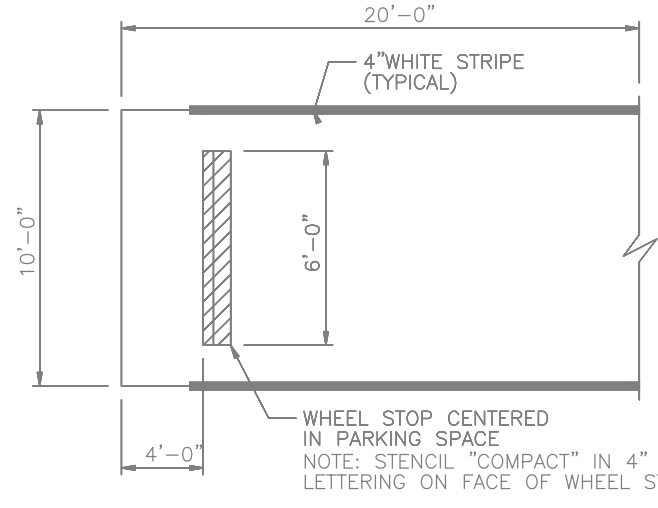
TOTAL PARKING PROVIDED : 155 Spaces (including 6 HC stalls)
 Note: 23 Additional Compact/NoParking Spaces provided but NOT included in Total Parking Provided number shown above



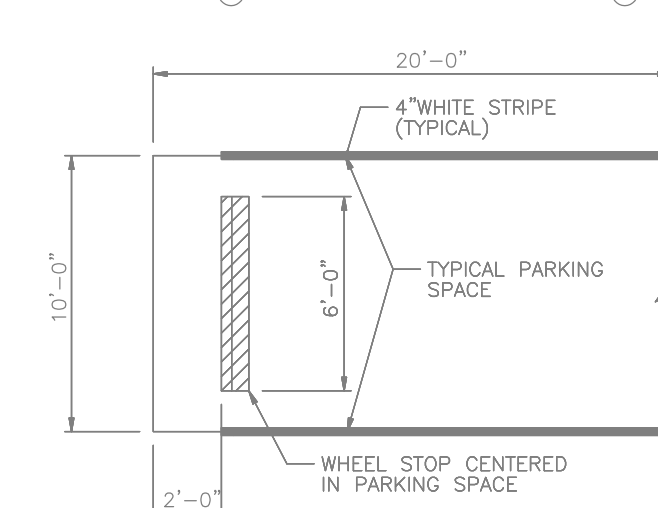
HANDICAP PARKING SPACE & w/WSTD. SPACE ADJACENT



HANDICAP PARKING SPACE SYMBOL



TYPE-1 PARKING SPACE DETAIL



TYPE-2 PARKING SPACE DETAIL

- NOTES:**
- 1). DRC SITE PLAN HAS BEEN APPROVED - CONTROL PERMIT NO. PZ-081000016
 - 2). ALL PAVEMENT MARKINGS SHALL BE THERMOPLASTIC EXCEPT THE 4 INCH WHITE LINES ON EITHER SIDE OF A PARKING SPACE

- NOTES:**
1. PROVIDE PAVEMENT SYMBOL IN HANDICAPPED PARKING SPACES. THE SYMBOL SHALL BE WHITE.
 2. ACCESS AISLE SHALL BE WHITE IN COLOR.

TECH UNIV OF MIAMI
 31,926 SF/2-STORY BLDG
 MAX HT. 27'-2"
 FIN. FLR. ELEV. = 15.95

2010-11-04-GENERAL REVISION

ALL DRAWINGS, SPECIFICATIONS AND RELATED DOCUMENTS ARE THE COPYRIGHT PROPERTY OF THE ARCHITECT AND MUST BE RETURNED UPON REQUEST. REPRODUCTION OF DRAWINGS, SPECIFICATIONS AND RELATED DOCUMENTS IN PART OR WHOLE IS FORBIDDEN WITHOUT THE ARCHITECT'S WRITTEN PERMISSION.

HNM ARCHITECTURE
 3705 NORTH FEDERAL HIGHWAY
 DELRAY BEACH, FLORIDA 33483
 T:561.733.2225 F:561.733.2383
 INFO@HNM-ARCHITECTURE.COM

MICHAEL W. HANLON
 FL REGISTERED ARCHITECT
 REGISTRATION NO. AB0017270

ISSUED DATE: 2009-01-12	DRAWN BY: MWH
DATE PRINTED: 2010-11-04	CHECKED BY: MWH
SCALE: 1" = 30'-0"	HNM PROJECT NO: 08-012

SITE PLAN STRIPING

DRAWING NO:
A-0.0

TECHNOLOGICAL UNIVERSITY OF MIAMI
 3700 COCONUT CREEK PARKWAY
 COCONUT CREEK, FLORIDA