

WYN CREEK CENTER  
WEST COCONUT CREEK PARKWAY  
COCONUT CREEK, FLORIDA

SIGNAGE CRITERIA (proposed revision)

CONTENTS:

1. GROUND SIGN FOR CENTER.
2. FASCIA SIGNS FOR STUCCO BAND OF PROPOSED RESTAURANT AND BUILDING "B".
3. WINDOW IDENTIFICATION SIGNS, BUILDING "B".
4. NO SIGNAGE FOR BUILDING "A" (two storey glass building).
5. DIRECTORY SIGN FOR VEHICULAR CIRCULATION AND INFORMATION.
6. DIRECTIONAL SIGN FOR CHILD CARE DROP OFF.
7. INFORMATION SIGN FOR EASY ACCESS TO TRAFFIC CONTROLLER AT 39th AVENUE.

LETTER STYLE:

ALL SIGNS WILL BE IN EUROSTYLE BOLD EXTENDED LETTERS AS PREVIOUSLY APPROVED.

MAXIMUM COPY, BUILDING "B", FASCIA:

ALL USERS WILL PLACE SIGNS ON THE LOWER SAND FINISHED STUCCO BAND ON BUILDING "B". THIS BAND MEASURES 30" IN HEIGHT AND THE COPY AREA MUST NOT EXTEND INTO THE TOP THREE INCHES OR THE LOWER THREE INCHES OF SAID STUCCO BAND. THE MAXIMUM LENGTH OF USER SIGN SHALL BE NO MORE THAN 66% OF THE LENGTH OF THE USER LEASED FRONT FASCIA AREA. THE SIGN WILL BE CENTERED ON THE AREA LEASED BY THE USER (bay width). SIGNS MAY BE INTERNALLY ILLUMINATED WITH STANDOFFS OF NO MORE THAN 1 1/2 INCH ALLOWED. NO RACEWAYS MAY BE USED ON THIS BUILDING. SEE ENCLOSED DIAGRAM FOR TYPICAL FASCIA SIGN.

MAXIMUM COPY, BUILDING "B", WINDOW/GLASS:

ALL USERS (TENANTS) WILL BE LIMITED TO A TWELVE BY FOURTEEN INCH IDENTITY OR INFORMATIONAL SIGN. SUITE IDENTIFICATION NUMBERING IS LIMITED TO AN AREA CENTERED ON THE TRANSOM GLASS AREA ABOVE ENTRY DOOR (SEE ENCLOSED DIAGRAM). LETTERS WILL BE LIMITED TO ONE INCH TALL WHITE VINYL DIE CUT GRAPHICS APPLIED TO WINDOW AREA AS DIAGRAMED IN TYPICAL STOREFRONT ELEVATION.

MAXIMUM COPY, BUILDING "C", (low turnover restaurant):

TENANT COPY WILL BE LIMITED TO THE UPPER SAND FINISHED STUCCO BAND ON THE EAST AND NORTH ELEVATIONS OF THE BUILDING. THIS BAND MEASURES THIRTY INCHES IN HEIGHT AND A THREE INCH REVEAL IS MANDATORY AT THE TOP AND BOTTOM OF THE SIGN. THE COPY LENGTH IS LIMITED TO 40% OF THE ELEVATION ON WHICH THE SIGN IS LOCATED. THE LETTERS MAY BE INDIVIDUALIZED BY THE TENANT, MAY BE ILLUMINATED BUT MAY NOT BE MOUNTED ON A RACEWAY. THE LETTERS MUST BE INDIVIDUALLY MOUNTED AND IF ILLUMINATED, MUST BE INTERNALLY ILLUMINATED. NO EXPOSED NEON TUBES WILL BE ALLOWED. IDENTIFICATION IS ALLOWED ON THE PROPOSED ENTRY CANVAS CANOPY BUT MUST NOT COVER MORE THAN 40% OF EITHER THE NORTH OR WEST SIDE OF THE CANOPY.

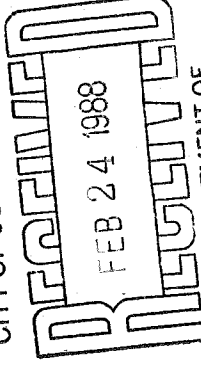
SIGNS WILL NOT BE PERMITTED ON EXTERIOR WALLS OF BUILDING "A".

\* MUST MATCH EUROSTYLE EXTENDED BOLD LETTERS OF BUILDING "B"

(CONTINUED)

IB 2/24/88  
2/24/88

CITY OF COCONUT CREEK



DEPARTMENT OF  
COMMUNITY DEVELOPMENT

PAGE TWO  
WYNCREEK CENTER SIGN CRITERIA.

DIRECTORY SIGN (s):

DIRECTORY SIGNS ARE TO BE LIMITED TO THE DIAGRAM ENCLOSED AND SO IDENTIFIED.

DIRECTION SIGNS FOR THE LOCATION OF CHILD CARE DROP OFF WILL BE LIMITED TO TWO PROMINANT LOCATIONS SO THAT TRAFFIC STACKING WILL BE CARRIED OUT SAFELY AND AUTOMOBILE TRAFFIC WILL NOT INTRUDE INTO PEDESTRIAL AREAS. SUCH SIGNS ARE LIMITED TO TWELVE INCHES BY TWENTY FOUR INCHES IN SIZE AND THE BOTTOM OF THE SIGN WILL BE THREE FEET ABOVE THE PAVEMENT SURFACE. THE SIGN WILL BE ROYAL BLUE LETTERS ON A LIGHT GRAY BACKGROUND (to match building color).

AN INFORMATION SIGN TO ADVISE THE MOTORIST THAT THEY CAN ADVANCE TO A TRAFFIC CONTROLLER LOCATED AT THE CORNER OF 39th AVE AND COCONUT CREEK PARKWAY FOR SAFE ENTRY ONTO OR ACROSS THIS BUSY THOURFARE VIA THE ADJACENT PROPERTY DRIVE TO THE NORTH.

NOTE:

NO SIGNS (OTHER THAN SUITE OR ADDRESS) WILL BE ALLOWED AT THE REAR OF BUILDING "B".

TR 2/24/68

3'0"

18"

4'0"

WYN CREEK  
CENTER

8"  
8"  
8"  
5"

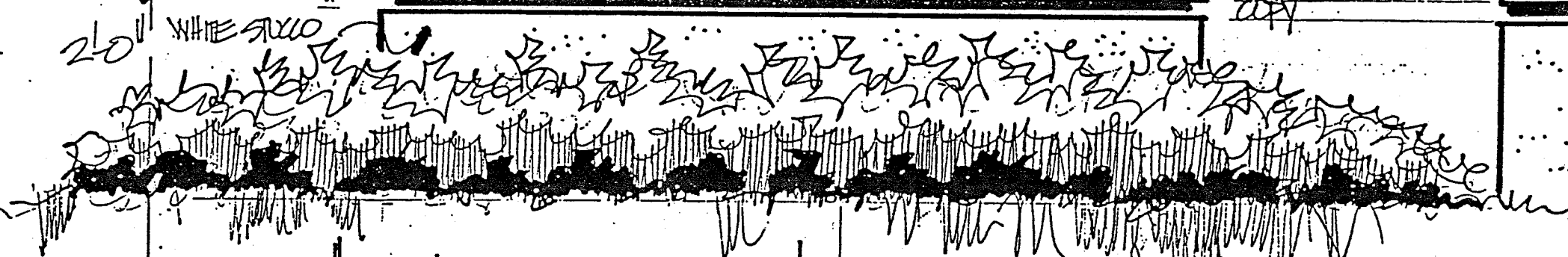
BACK BG W/ WHITE COPY

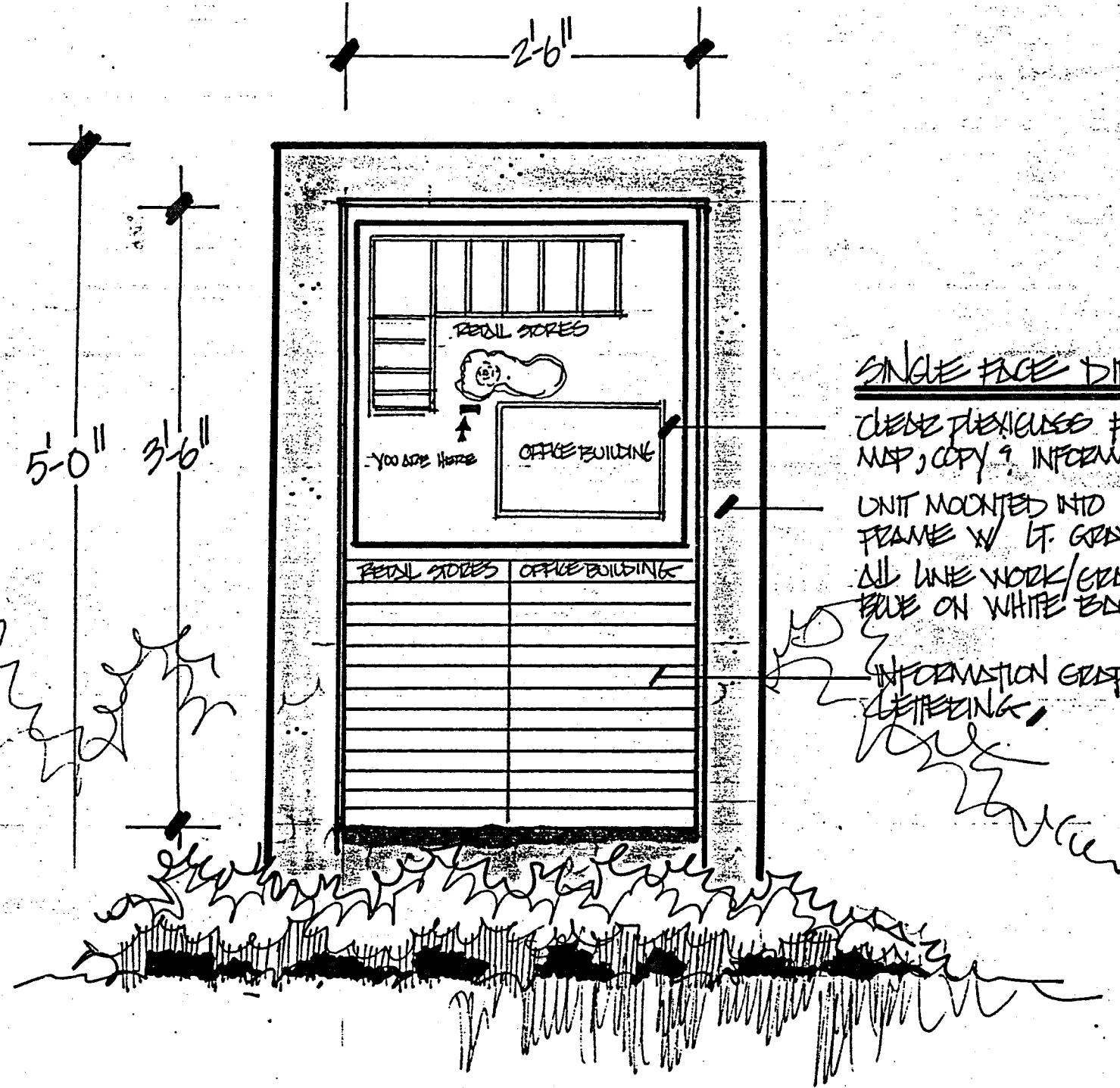
2'0" WHITE STUCCO

DOUBLE FACE ILLUMINATED GROUND SIGN

SCALE 1/4" = 1'-0"

FABRICATED ALUMINUM CONSTRUCTION W/ LETTERING  
SPACED 3/4" FROM BACKGROUND,  
SIGN BASE CONSTRUCTION FROM ALUMINUM W/ STUCCO  
DETAILS,





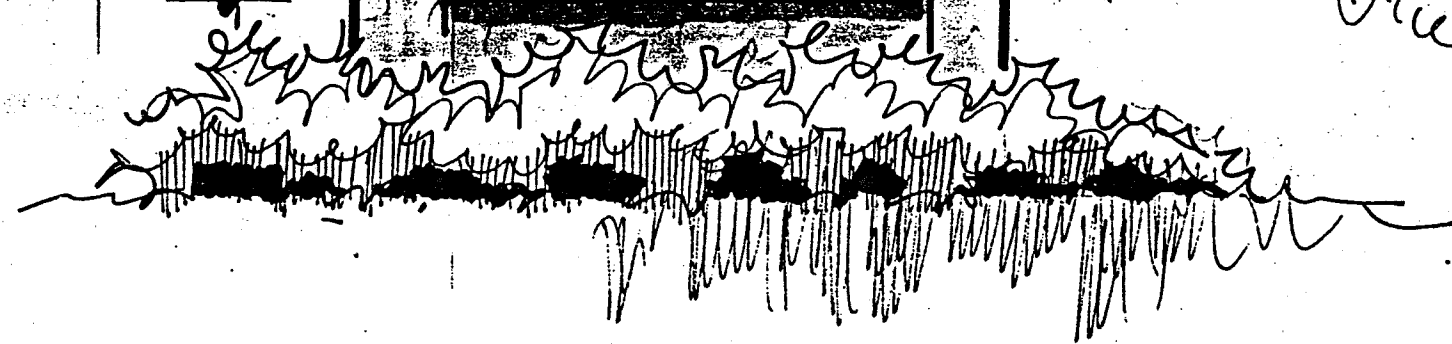
SINGLE FACE DIRECTORY SIGN

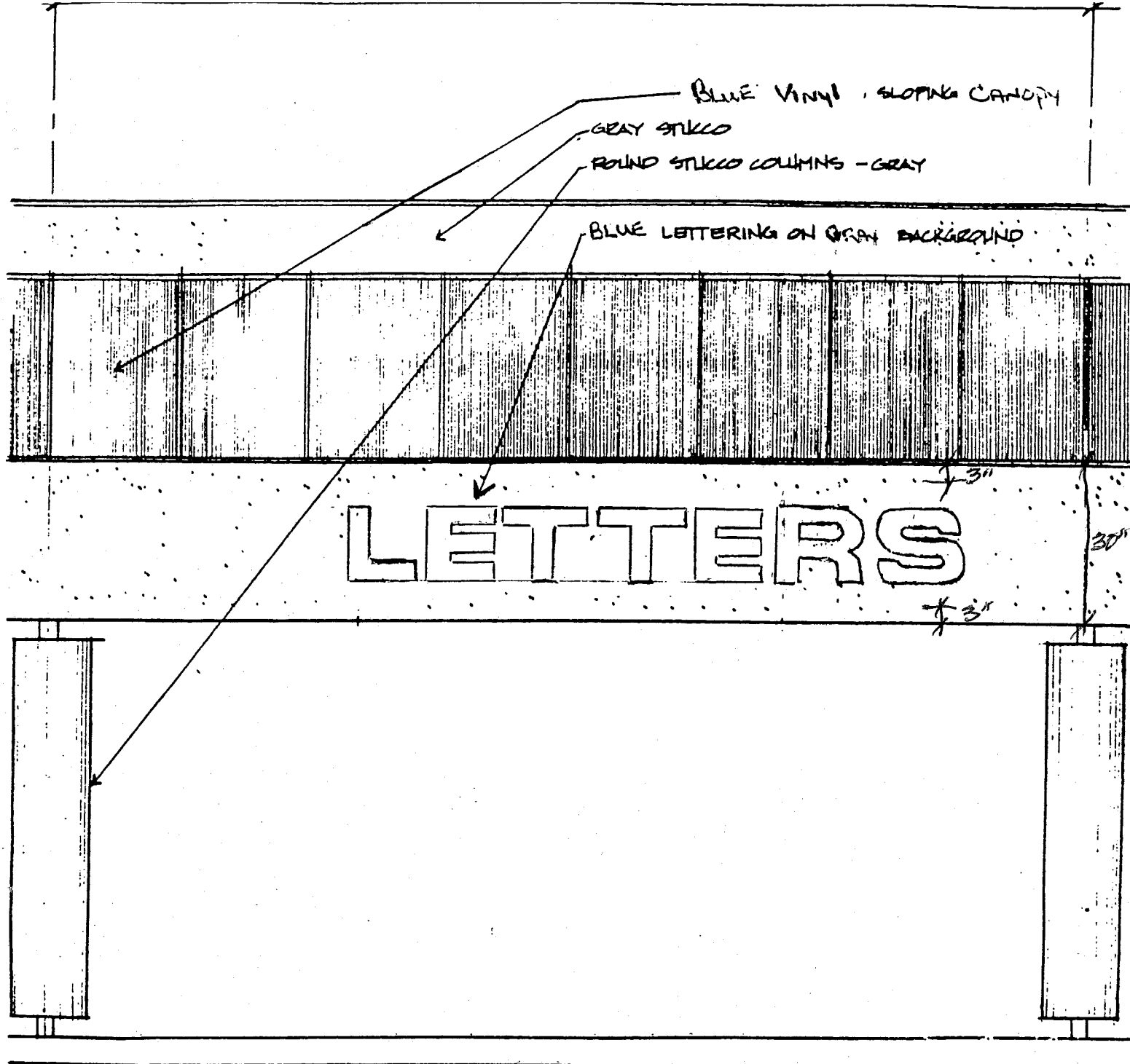
CLERE PLEXIGLASS FACE W/ SECOND SURFACE MAP, COPY & INFORMATION GRAPHICS,  
 UNIT MOUNTED INTO FABRICATED ALUMINUM 6"X6" FRAME W/ LT. GRAY STUCCO FINISH,  
 ALL LINE WORK/GRAPHICS TO MATCH R9 #2051 BLUE ON WHITE BACKGROUND,

INFORMATION GRAPHICS TO BE WHITE VINYL LETTERING.

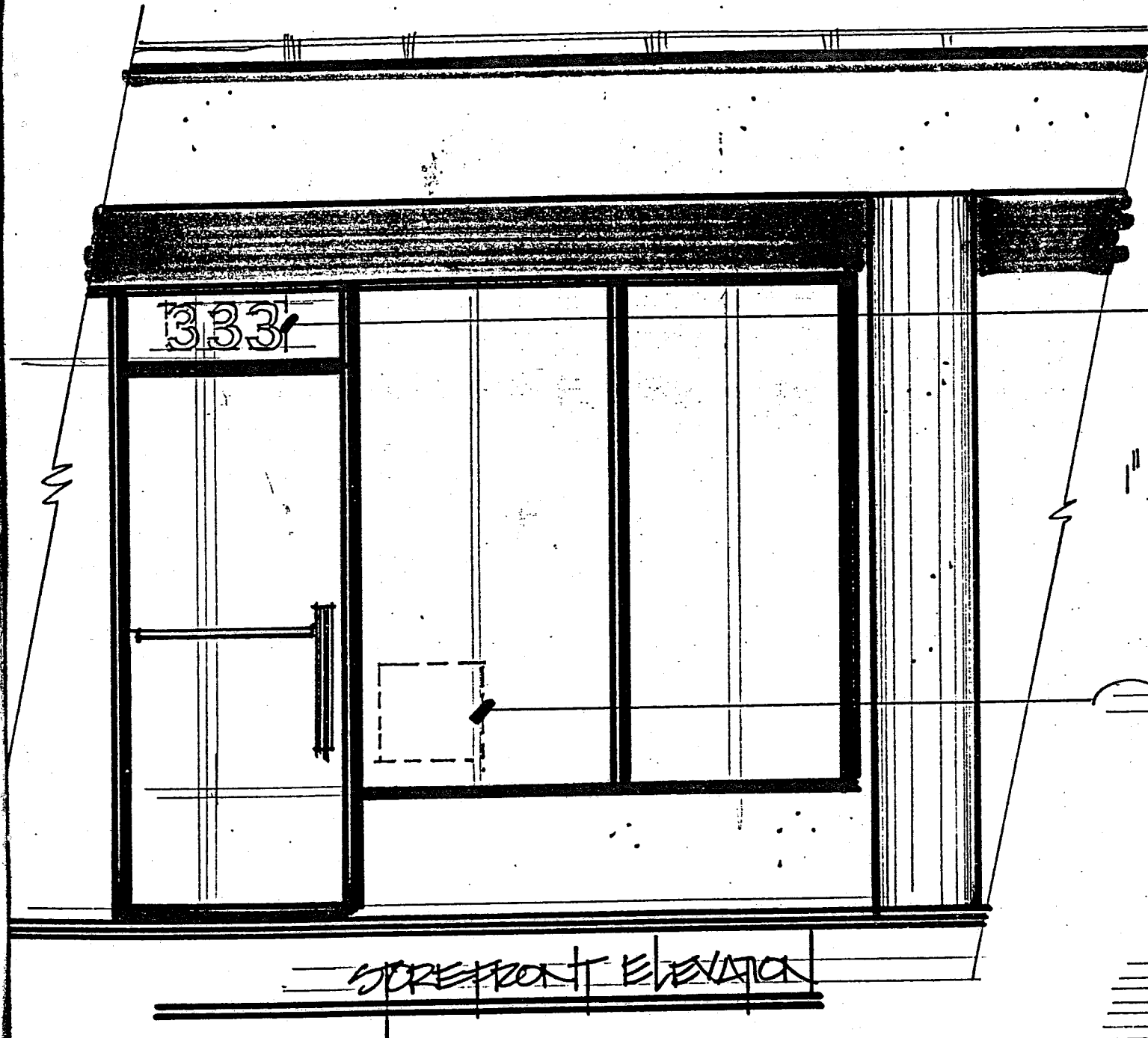
*Handwritten scribbles and notes on the left side of the drawing.*

*Handwritten scribbles and notes on the right side of the drawing.*





FASCIA SIGNAGE ELEVATION



STOREFRONT ELEVATION

4" TALL SOME IDENTIFICATION NUMBERS IN WHITE PRECISION CUT VINYL MOUNTED TO GLASS AREA ABOVE ENTRY DOOR

14" Business Hours

Mon.-Fri.  
9am-5pm

12" Sat.  
10am-3pm

Sun.-Closed

1" TALL WHITE VINYL DECORATIVE GRAPHS APPLIED TO GLASS WINDOW AREA AS SHOWN