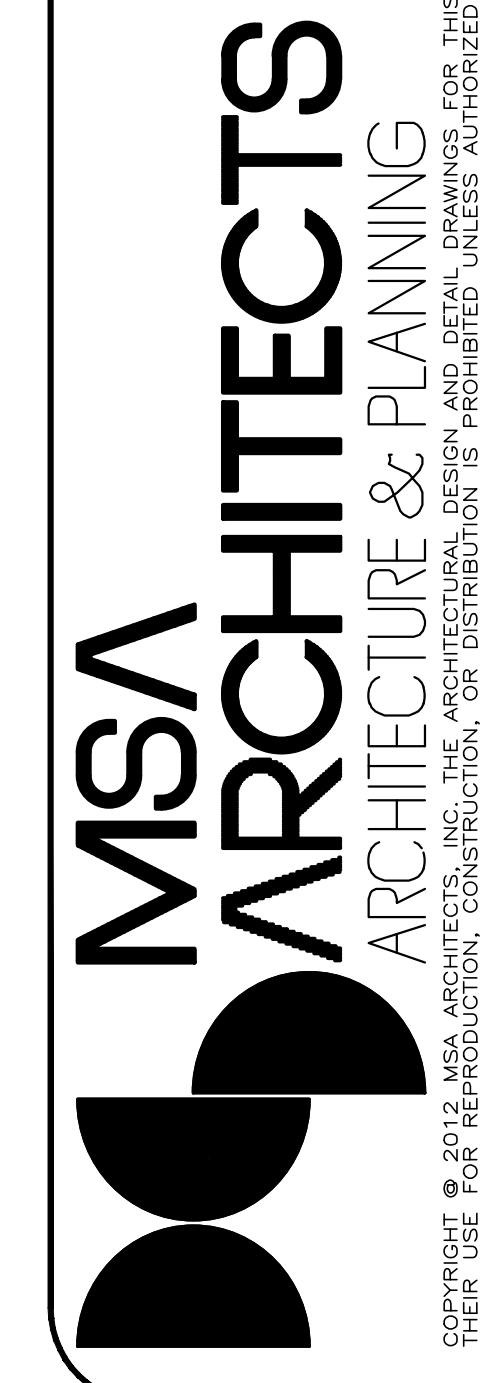


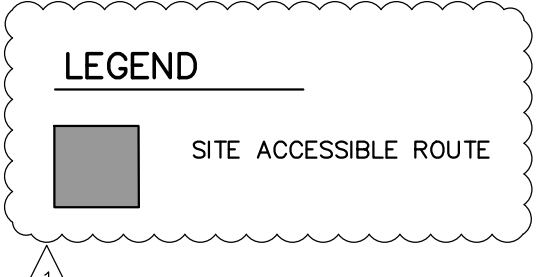
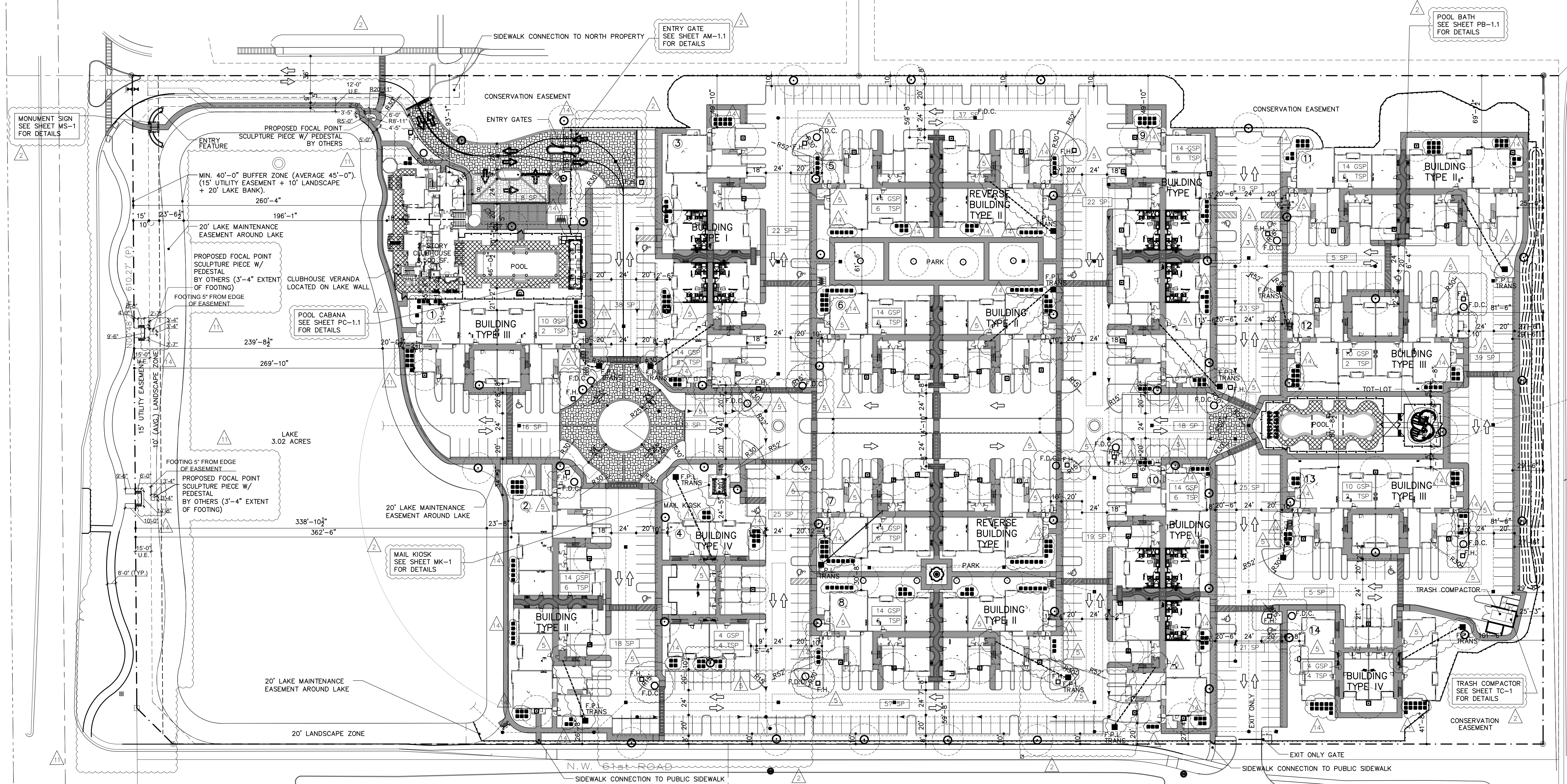
REVISIONS	BY
△ PERMIT COMMENTS 10/01/2012	G.D.
△ PERMIT COMMENTS 12/18/2012	G.D.
△ COORDINATION 04/29/13	C.C.
△ COORDINATION 12/16/13	C.C.
△ COORDINATION 03/21/14	N.V.

CASA PALMA
 FOR:
 ZF DEVELOPMENT, LLC.
 LOCATED AT:
 COCONUT CREEK, FLORIDA

MSA ARCHITECTS, INC.
 MIAMI OFFICE
 7695 SW 104th ST.
 MIAMI, FLORIDA 33156
 (305) 273-9911



DRAWN -
 CHECKED -
 DATE AUGUST 12, 2012
 SCALE AS SHOWN
 JOB NO. 1495.PRJ
 SHEET 1495-SP-1.DWG



○	FDC-PROP FDC(TYP)
□	FH-FIRE HYDRANT
■	TRANSFORMER LOCATION
■	METER ROOM LOCATION

NOTE:
 1) G.C. TO COORDINATE LOCATION OF METER ROOM FROM SHEET SP-1; CONFIRM FPL TRANSFORMER PAD LOCATIONS ON FPL UTILITY SERVICE CONDUCT PLANS.
 2) G.C. TO COORDINATE FIRE RISER CLOSET LOCATIONS ON SHEET SP-1; COORDINATE WITH CIVIL DRAWINGS

NOTE: PARKING STALLS ARE 9'X20'
 SEE DETAILS ON SHEET SP-2

NOTE: TYPICAL SIDEWALK PATH IS
 5'-0" WIDE.

SITE PLAN
 350 UNITS
 SCALE: 1"=50'-0"



U.S. NO. 441 (DUAL ROAD 7)

N.W. 61st ROAD
 SIDEWALK CONNECTION TO PUBLIC SIDEWALK

EXIT ONLY GATE
 SIDEWALK CONNECTION TO PUBLIC SIDEWALK

POOL BATH
 SEE SHEET PB-1.1
 FOR DETAILS

ENTRY GATE
 SEE SHEET AM-1.1
 FOR DETAILS

MONUMENT SIGN
 SEE SHEET MS-1
 FOR DETAILS

POOL CABANA
 SEE SHEET PC-1.1
 FOR DETAILS

MAIL KIOSK
 SEE SHEET MK-1
 FOR DETAILS

TRASH COMPACTOR
 SEE SHEET TC-1
 FOR DETAILS

PROPOSED FOCAL POINT
 SCULPTURE PIECE W/
 PEDESTAL BY OTHERS

PROPOSED FOCAL POINT
 SCULPTURE PIECE W/
 PEDESTAL BY OTHERS (3'-4" EXTENT
 OF FOOTING)

PROPOSED FOCAL POINT
 SCULPTURE PIECE W/
 PEDESTAL BY OTHERS (3'-4" EXTENT
 OF FOOTING)

PROPOSED FOCAL POINT
 SCULPTURE PIECE W/
 PEDESTAL BY OTHERS (3'-4" EXTENT
 OF FOOTING)