

BUILDING 9 COURTYARD LANDSCAPE PLAN

SCALE: 1/4" = 1'-0"

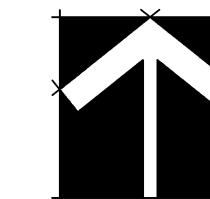
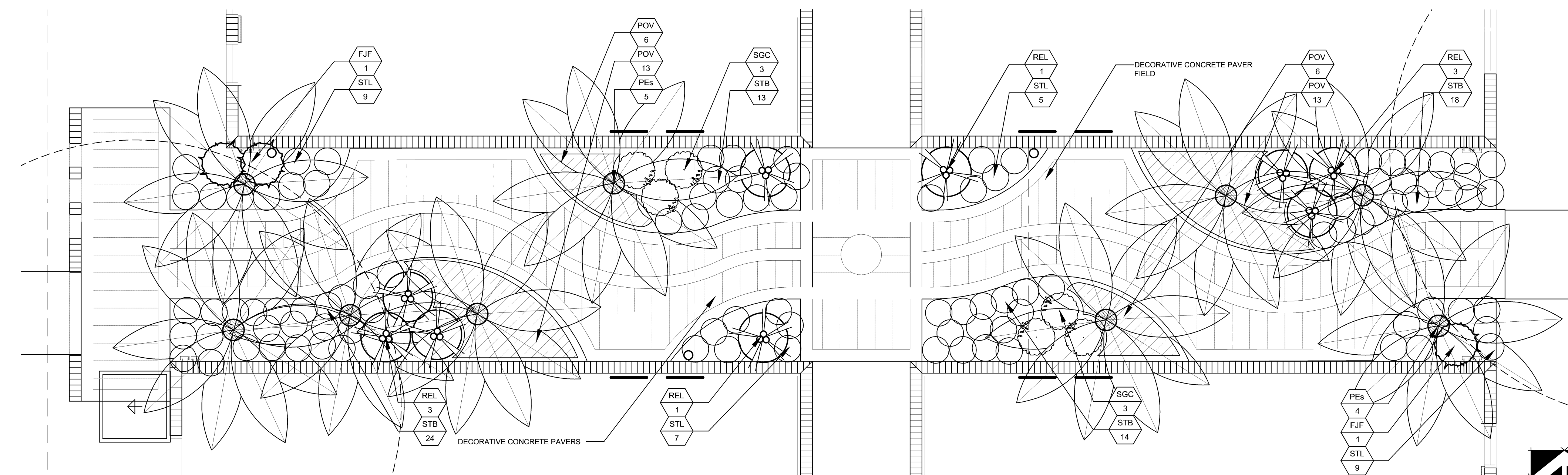
PLANT LIST BUILDING 9

Trees and Palms

PEs M 9 Ptychosperma elegans / Solitaire Palm B&B Field Grown, 8-12' Staggered OA Hts.

Shrubs and Ground Covers

Code	Native/Drought	Qty.	Botanical Name / Common Name	Specifications
FJF	M	2	Fatsia japonica / False Aralia	7 Gallon, 30-36" OA, Placed per Plan
POV (N)	M	38	Peperomia obtusifolia 'Variegata' / Baby Rubber Plant	1 Gallon, 10-14" OA, 18" On Center
REL	M	8	Rhapis excelsa / Lady Palm	7 Gallon, 3-4' OA, Placed per Plan
SGC	V	6	Schefflera arboricola 'Gold Capella' / Gold Capella Arboricola	3 Gallon, 24" OA, 24" On Center
STB	V	69	Sansevieria trifasciata 'Black Gold' / Variegated Snake Plant	1 Gallon, 10-18" OA, 18" On Center
STL	V	30	Sansevieria trifasciata 'Laurentii' / Snake Plant	1 Gallon, 10-12" OA, 18" On Center



BUILDING 10 COURTYARD LANDSCAPE PLAN

SCALE: 1/4" = 1'-0"

PLANT LIST BUILDING 10

Trees and Palms

PEs M 9 Ptychosperma elegans / Solitaire Palm B&B Field Grown, 8-12' Staggered OA Hts.

Shrubs and Ground Covers

Code	Native/Drought	Qty.	Botanical Name / Common Name	Specifications
FJF	M	2	Fatsia japonica / False Aralia	7 Gallon, 30-36" OA, Placed per Plan
POV (N)	M	38	Peperomia obtusifolia 'Variegata' / Baby Rubber Plant	1 Gallon, 10-14" OA, 18" On Center
REL	M	8	Rhapis excelsa / Lady Palm	7 Gallon, 3-4' OA, Placed per Plan
SGC	V	6	Schefflera arboricola 'Gold Capella' / Gold Capella Arboricola	3 Gallon, 24" OA, 24" On Center
STB	V	69	Sansevieria trifasciata 'Black Gold' / Variegated Snake Plant	1 Gallon, 10-18" OA, 18" On Center
STL	V	30	Sansevieria trifasciata 'Laurentii' / Snake Plant	1 Gallon, 10-12" OA, 18" On Center