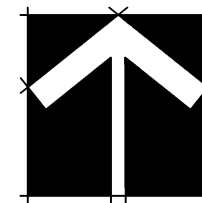


### BUILDING 2 COURTYARD LANDSCAPE PLAN

SCALE: 1/4" = 1'-0"



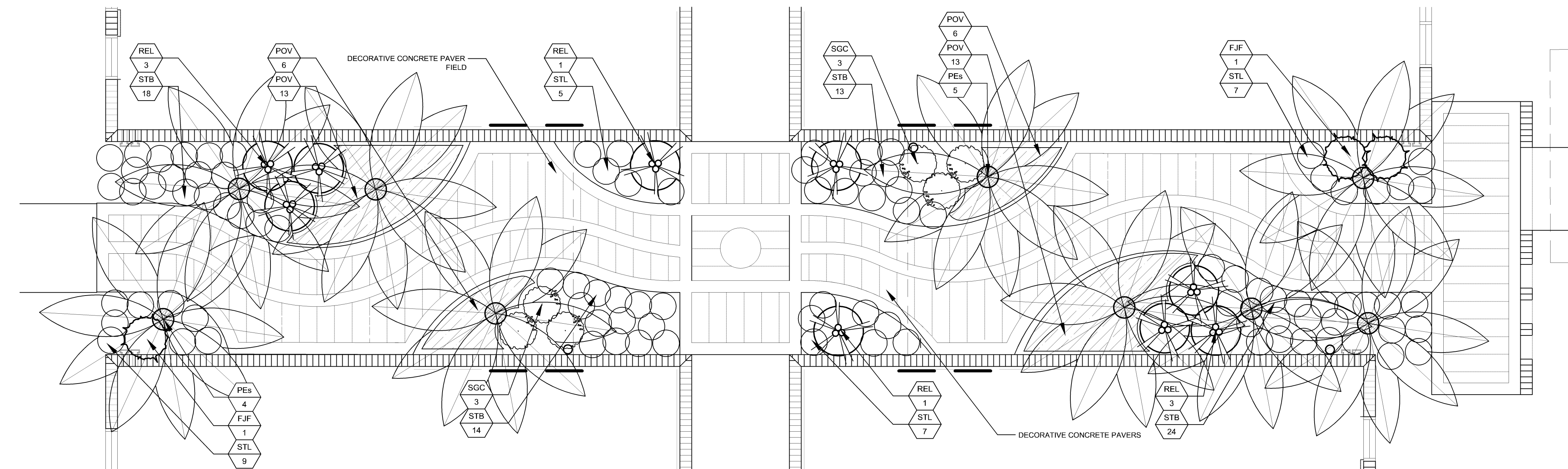
#### PLANT LIST BUILDING 2

##### Trees and Palms

PEs M 8 Ptychosperma elegans / Solitaire Palm B&B Field Grown, 8-12' Staggered OA Hts.

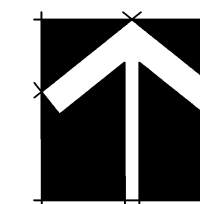
##### Shrubs and Ground Covers

Code	Native/Drought	Qty.	Botanical Name / Common Name	Specifications
FJF	M	18	Fatsia japonica / False Aralia	7 Gallon, 30-36" OA, Place per Plan
REL	M	8	Rhapis excelsa / Lady Palm	7 Gallon, 4-5' OA, Place per Plan
SAT	V	14	Schefflera arboricola 'Trinette' / Variegated Arboricola	3 Gallon, 24" OA, 24" On Center
SGC	V	18	Schefflera arboricola 'Gold Capella' / Gold Capella Arboricola	3 Gallon, 24" OA, 24" On Center
STB	V	73	Sansevieria trifasciata 'Black Gold' / Variegated Snake Plant	1 Gallon, 10-12" OA, 18" On Center



### BUILDING 3 COURTYARD LANDSCAPE PLAN

SCALE: 1/4" = 1'-0"



#### PLANT LIST BUILDING 3

##### Trees and Palms

PEs M 8 Ptychosperma elegans / Solitaire Palm B&B Field Grown, 8-12' Staggered OA Hts.

##### Shrubs and Ground Covers

Code	Native/Drought	Qty.	Botanical Name / Common Name	Specifications
FJF	M	2	Fatsia japonica / False Aralia	7 Gallon, 30-36" OA, Placed per Plan
POV (N)	M	38	Peperomia obtusifolia 'Variegata' / Baby Rubber Plant	1 Gallon, 10-14" OA, 18" On Center
REL	M	8	Rhapis excelsa / Lady Palm	7 Gallon, 3-4' OA, Placed per Plan
SGC	V	6	Schefflera arboricola 'Gold Capella' / Gold Capella Arboricola	3 Gallon, 24" OA, 24" On Center
STB	V	69	Sansevieria trifasciata 'Black Gold' / Variegated Snake Plant	1 Gallon, 10-18" OA, 18" On Center
STL	V	28	Sansevieria trifasciata 'Laurentii' / Snake Plant	1 Gallon, 10-12" OA, 18" On Center