

BUILDING 5 COURTYARD LANDSCAPE PLAN

SCALE: 1/4" = 1'-0"

PLANT LIST BUILDING 5

Trees and Palms

PEs M 8 *Ptychosperma elegans* / Solitaire Palm B&B Field Grown, 8-12' Staggered OA Hts.

Shrubs and Ground Covers

| Code | Native/Drought | Qty. | Botanical Name / Common Name | Specifications |
|------|----------------|------|--|-------------------------------------|
| FJF | M | 18 | <i>Fatsia japonica</i> / False Aralia | 7 Gallon, 30-36" OA, Place per Plan |
| REL | M | 8 | <i>Rhapis excelsa</i> / Lady Palm | 7 Gallon, 4-5' OA, Place per Plan |
| SAT | V | 14 | <i>Schefflera arboricola</i> 'Trinette' / Variegated Arboricola | 3 Gallon, 24" OA, 24" On Center |
| STB | V | 82 | <i>Sansevieria trifasciata</i> 'Black Gold' / Variegated Snake Plant | 1 Gallon, 10-12" OA, 18" On Center |

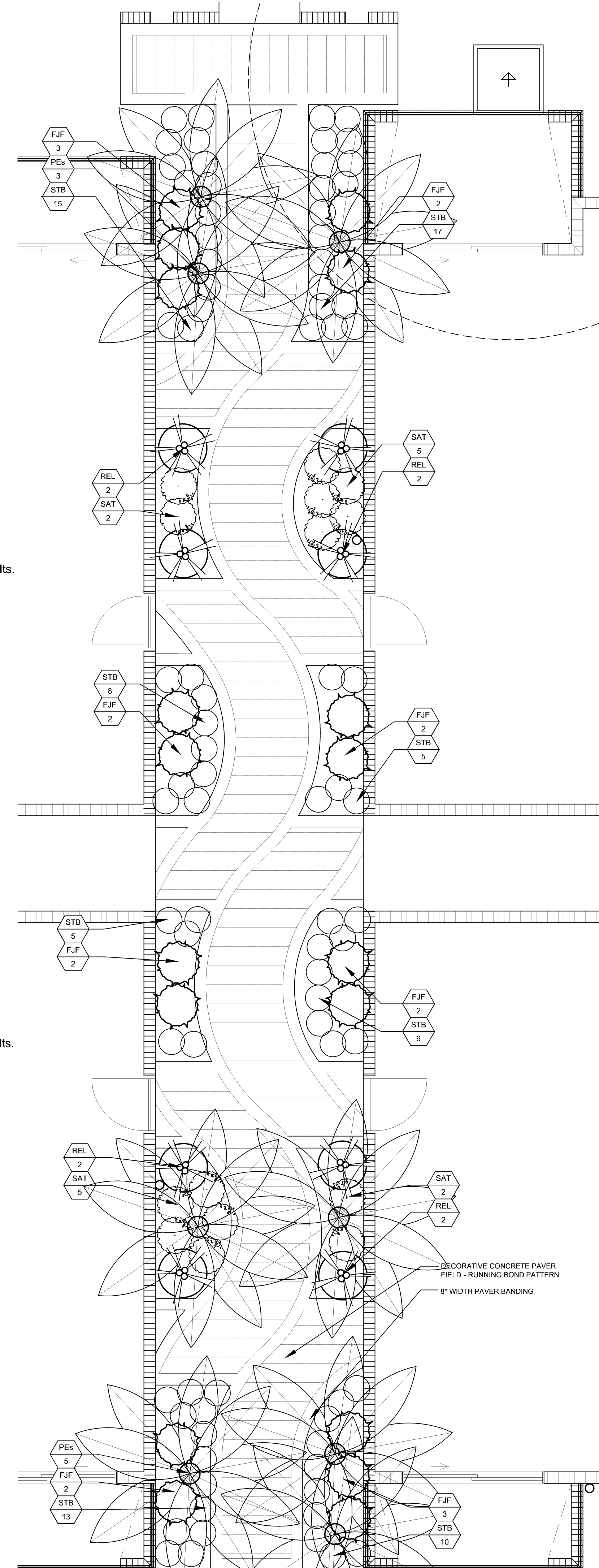
PLANT LIST BUILDING 6

Trees and Palms

PEs M 8 *Ptychosperma elegans* / Solitaire Palm B&B Field Grown, 8-12' Staggered OA Hts.

Shrubs and Ground Covers

| Code | Native/Drought | Qty. | Botanical Name / Common Name | Specifications |
|------|----------------|------|--|-------------------------------------|
| FJF | M | 18 | <i>Fatsia japonica</i> / False Aralia | 7 Gallon, 30-36" OA, Place per Plan |
| REL | M | 8 | <i>Rhapis excelsa</i> / Lady Palm | 7 Gallon, 4-5' OA, Place per Plan |
| SAT | V | 14 | <i>Schefflera arboricola</i> 'Trinette' / Variegated Arboricola | 3 Gallon, 24" OA, 24" On Center |
| STB | V | 82 | <i>Sansevieria trifasciata</i> 'Black Gold' / Variegated Snake Plant | 1 Gallon, 10-12" OA, 18" On Center |



BUILDING 6 COURTYARD LANDSCAPE PLAN

SCALE: 1/4" = 1'-0"