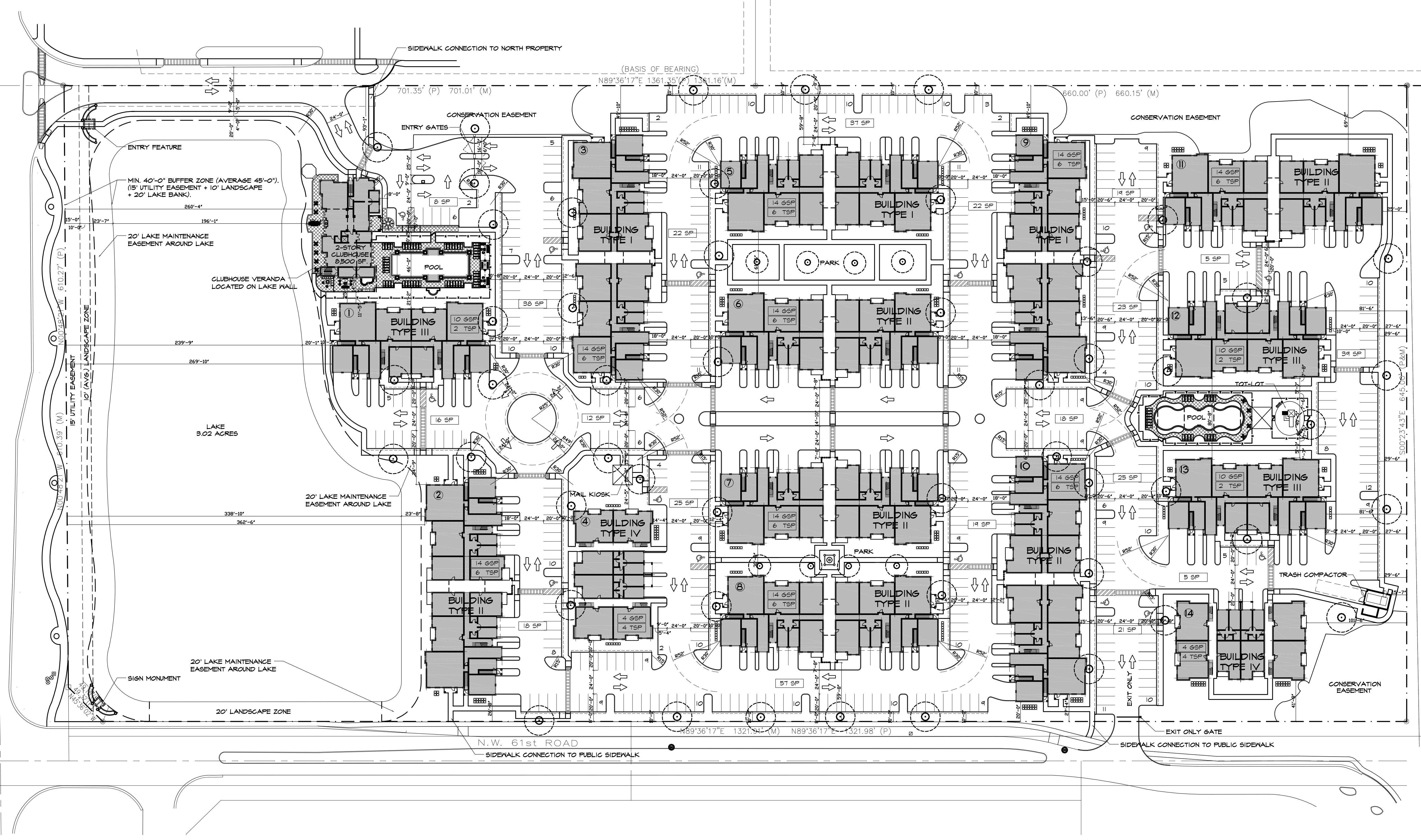


U.S. NO. 441 (SHEET NUMBER)



NOTE: PARKING STALLS ARE 9'X20'
SEE DETAILS ON SHEET SP-2

NOTE: TYPICAL SIDEWALK PATH IS
5'-0" WIDE.

SITE PLAN
350 UNITS
SCALE: 1"=50'-0"

CASA PALMA
FOR:
ZF DEVELOPMENT, LLC.
LOCATED AT:
COCONUT CREEK, FLORIDA

MSA ARCHITECTS, INC.
MIAMI OFFICE
7895 SW 104th ST.
MIAMI, FLORIDA 33156
(305) 272-9911

MSA ARCHITECTS
ARCHITECTURE & PLANNING

COPYRIGHT © 2011 MSA ARCHITECTS, INC. THE ARCHITECTURAL DESIGN AND DETAIL DRAWINGS FOR THIS BUILDING AND/OR OVERALL PROJECT ARE THE LEGAL PROPERTY OF AND ALL RIGHTS ARE RESERVED BY THE ARCHITECT.

DRAWN _____
CHECKED _____
DATE 03/28/12
SCALE AS SHOWN
JOB NO. 1495.PRJ
SHEET 1495-SP-1.DWG