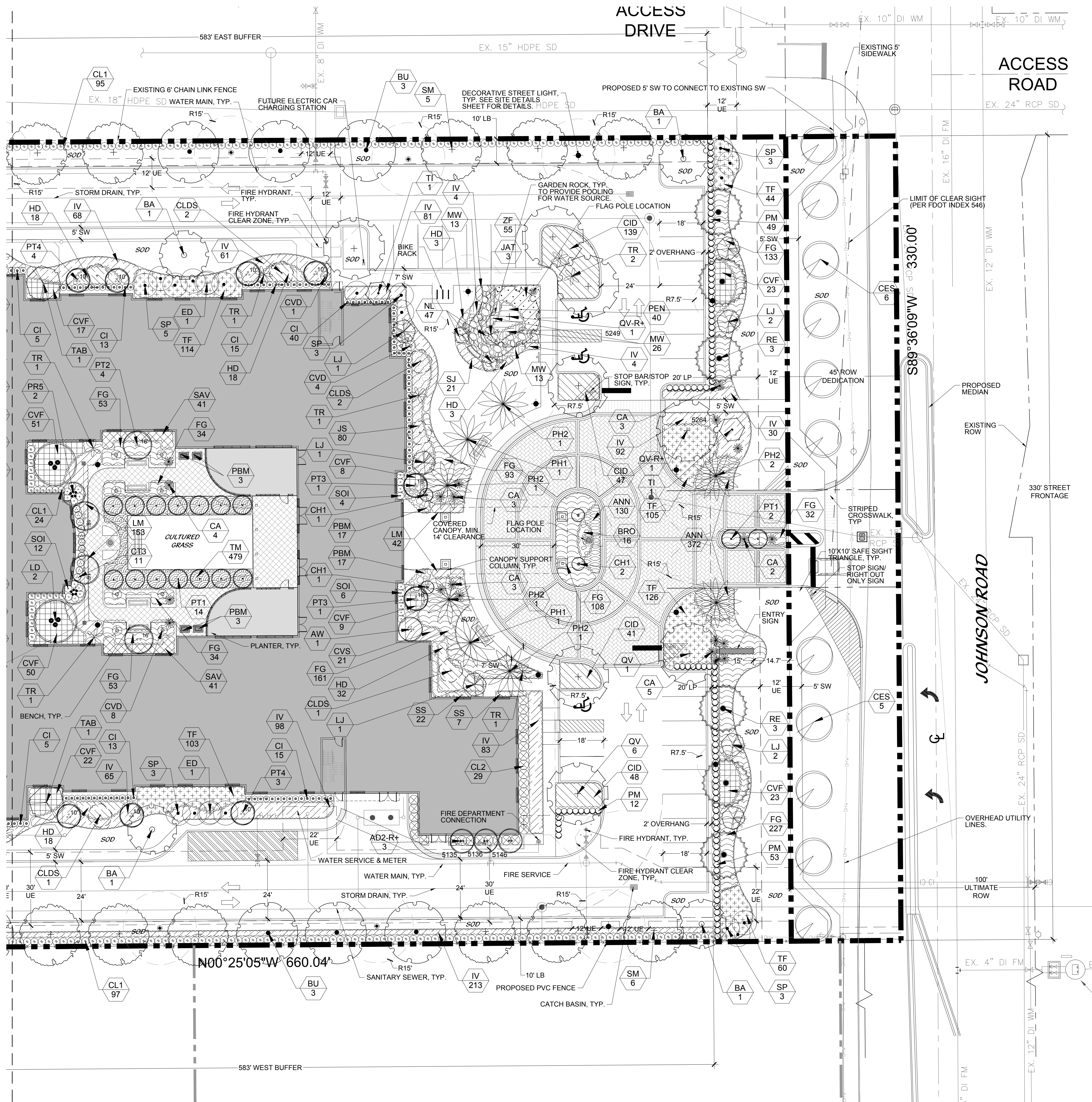


MATCHLINE - SEE SHEET 4



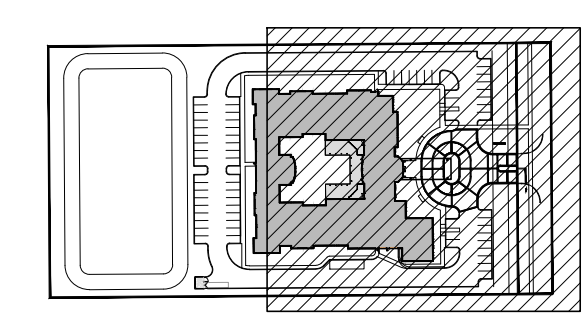
VICINITY MAP



LEGEND

- UE: UTILITY EASEMENT
- SB: SETBACK
- SW: CONCRETE SIDEWALK
- TYP: TYPICAL
- LME: LAKE MAINTENANCE EASEMENT
- ROW: RIGHT-OF-WAY
- LP: LANDSCAPE PARCEL
- LB: LANDSCAPE BUFFER
- FP: FOUNDATION PLANTING AREA
- : PARKING LOT LIGHT
- : DECORATIVE STREET LIGHT

KEY



48 HOURS BEFORE DIGGING
CALL TOLL FREE
811
SUNSHINE STATE ONE CALL
OF FLORIDA, INC.

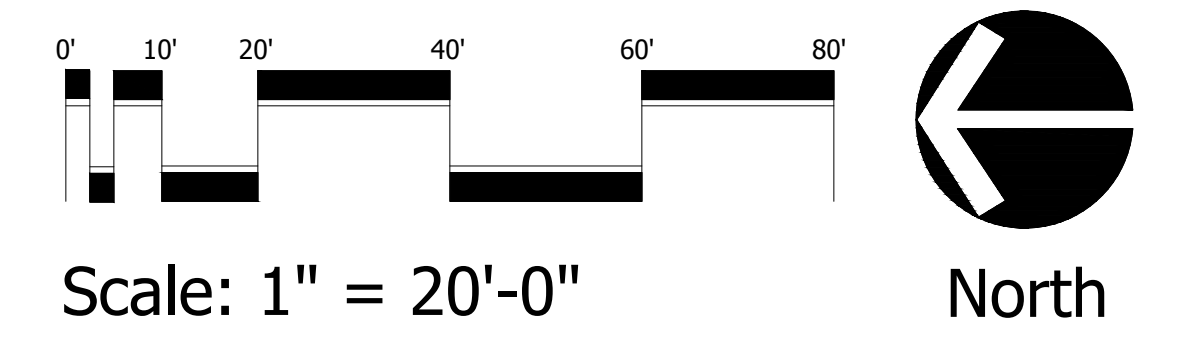
VEGETATIVE COVER DESCRIPTION

Existing
The existing vegetative cover consist of an active nursery operation with predominantly potted landscape and foliage plants. Few native trees exist scattered throughout the property. The site does not contain any native vegetative habitat. No wetlands are known to exist on the site.

Proposed
The proposed cover of the land will consist of building, vehicular use area, sidewalks, lake, buffers and landscape. The landscape will be predominantly native and sustainable landscape adapted to south Florida. The grass cover will consist of Floritarn and Bahia sod.

NOTE: GUMBO LIMBO TREE LOCATED IN THE BUTTERFLY GARDEN SHALL BE ALLOWED TO GROW AND MATURE IN ITS NATURAL FORM AND NOT BE CONTINUOUSLY TRIMMED OR LIMBED UP.

LANDSCAPE PLAN



Cotleur & Hearing
Landscape Architects
Land Planners
Environmental Consultants
1934 Commerce Lane
Suite 1
Jupiter, Florida 33458
561.747.6336 • Fax 747.1377
www.cotleurhearing.com
Lic# LC-C000239

CLARITY POINTE
Coconut Creek, Florida



| | |
|------------|-------------|
| DESIGNED | MCR |
| DRAWN | MCR |
| APPROVED | DEH |
| JOB NUMBER | 15-10206.04 |
| DATE | 01-22-16 |
| REVISIONS | 04-12-16 |
| | 04-25-16 |
| | 05-02-16 |
| | 08-17-16 |
| | 10-20-16 |
| | 12-14-16 |