







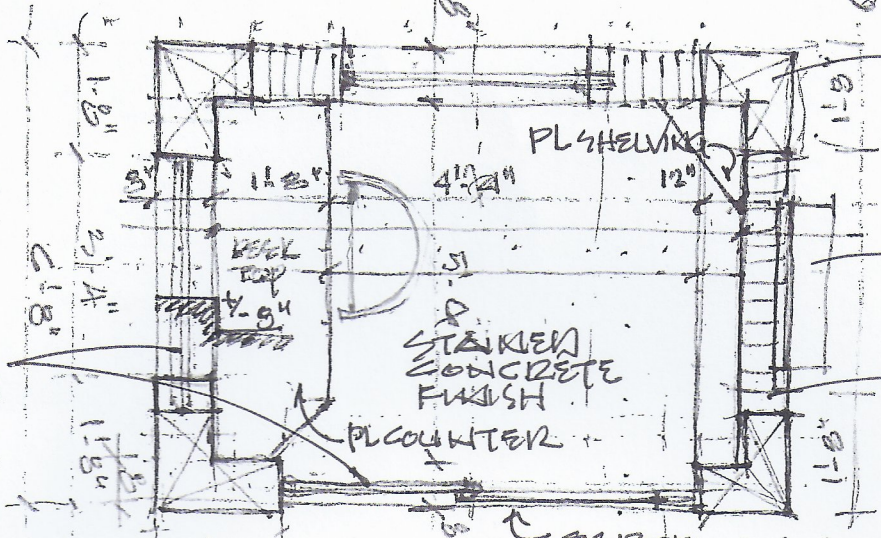


NORTH

5'-8"  
C. 8'

4'-4"  
2'-8"

IMPACT WINDOWS AND DOORS



CONCRETE COLUMNS

COMPACT A/C UNIT

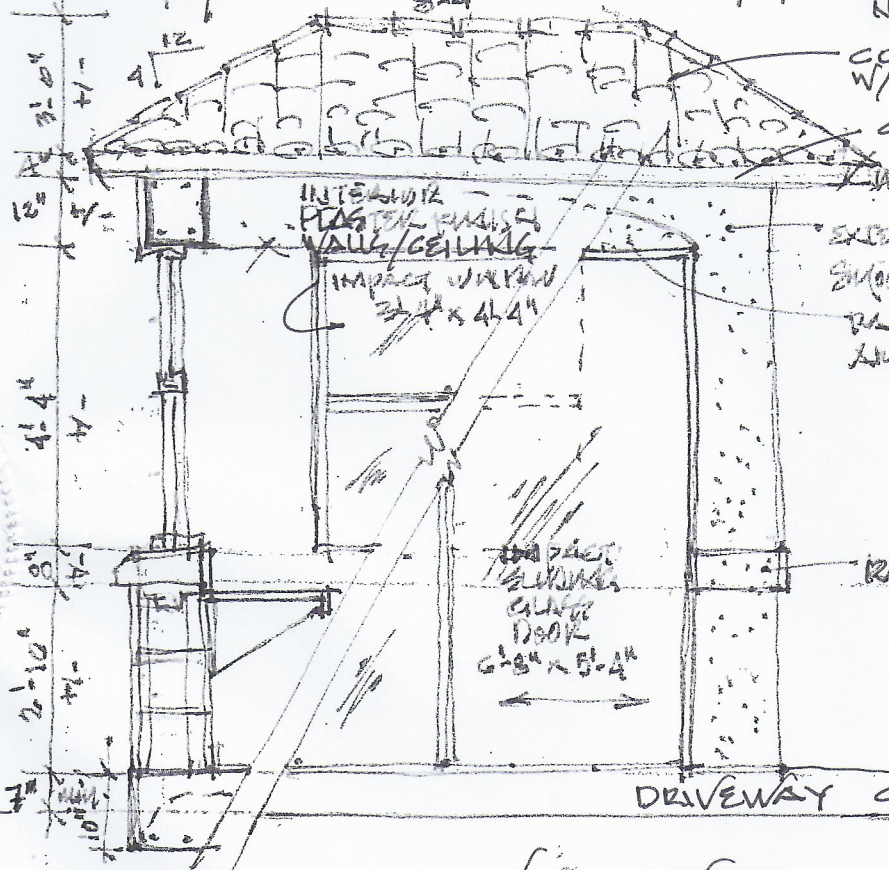
CONCRETE BLOCK

PL SHELVING

STAINED CONCRETE FINISH

PL COUNTER

FLOOR PLAN NTS.



CONCRETE TILE W/ METAL FLASHING

CEDAR FACIA

EXTERIOR STUCCO SURFACE FINISH  
PAINTED STUCCO  
AND FINISH

INTERIOR PLASTER FINISH  
VALVE/CEILING  
IMPACT WINDOW  
3'-4" x 4'-4"

PAINTED STUCCO FINISH

IMPACT WINDOW  
CLOSET  
DOOR  
6'-8" x 5'-4"

CURB

DRIVEWAY CURB 7" MIN.

WEST ELEVATION - FRONT NTS.

CITY OF COCONUT CREEK ADMINISTRATIVE REVIEW

### GUARD HOUSE PLAN & ELEVATION

CLUB CARRE CONDOMINIUM ASSOCIATION, INC.

AP-0013722

66002207

ARCHITECT PAUL JUST INC.

550 SOUTH FEDERAL HWY., FT. LAUDERDALE, FLA. 33301

DATE:

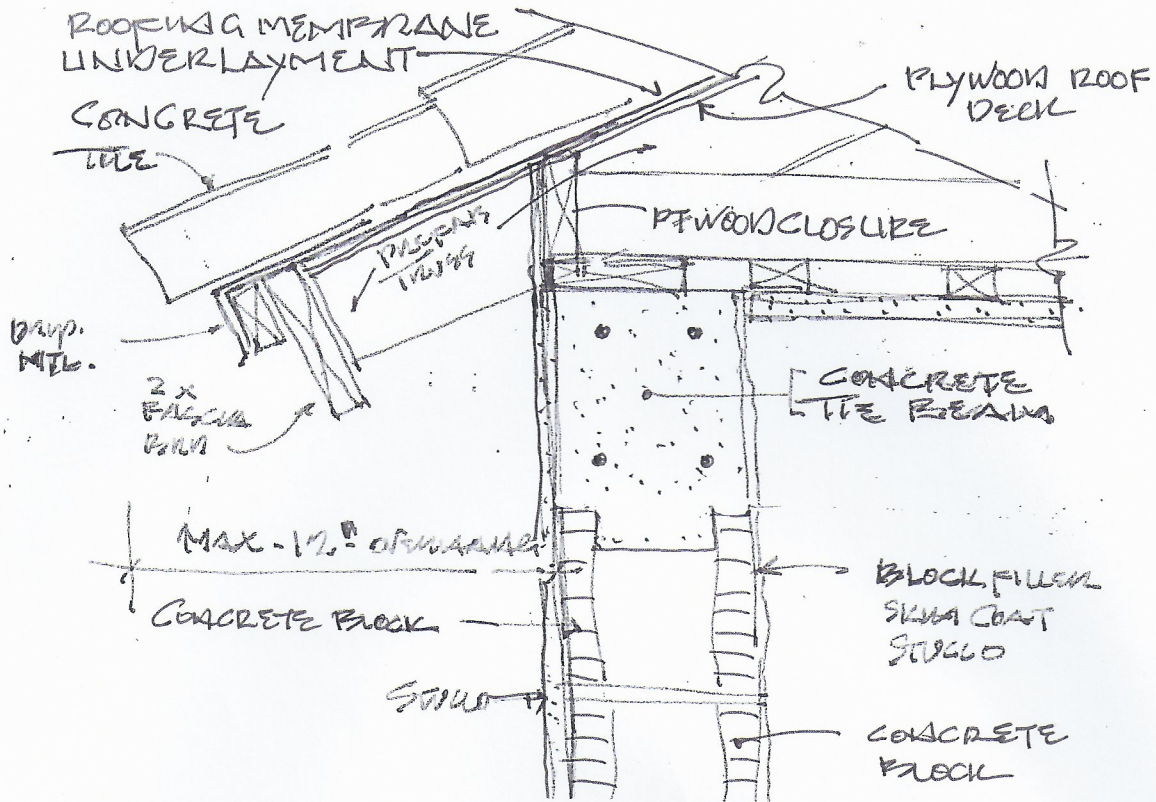
03.17.2014

DRAWING No.

A.1 of 3



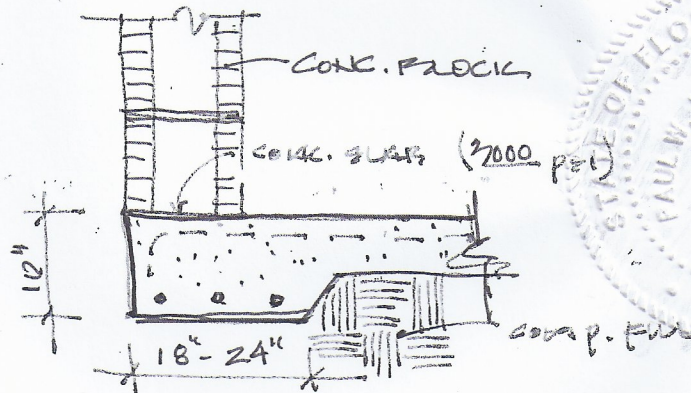




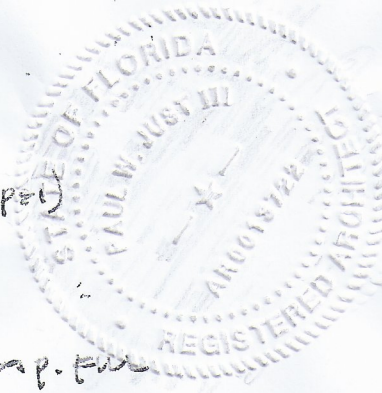
ROOF/WALL DETAIL  
NTS

MATERIALS LIST:

- CONC. ROOF TILE
- MEMBRANE UNDERLAYMENT
- PLYWOOD DECK
- PRE-ENG TRUSSES
- CONCRETE/MASONRY FRAMING-FOUN.
- STUCCO FINISHES
- PAINT/SEALANT
- IMPACT DOORS/WINDOWS



Wall & Foundation  
NTS



CITY OF COCONUT CREEK  
ADMINISTRATIVE REVIEW

GUARD HOUSE PLAN & ELEVATION

CLUB CARRE CONDOMINIUM ASSOCIATION, INC.

AP 0013722

AC0002207

ARCHITECT PAUL JUST INC.

550 SOUTH FEDERAL HWY., F. LAUDERDALE, FLA. 33301

DATE:

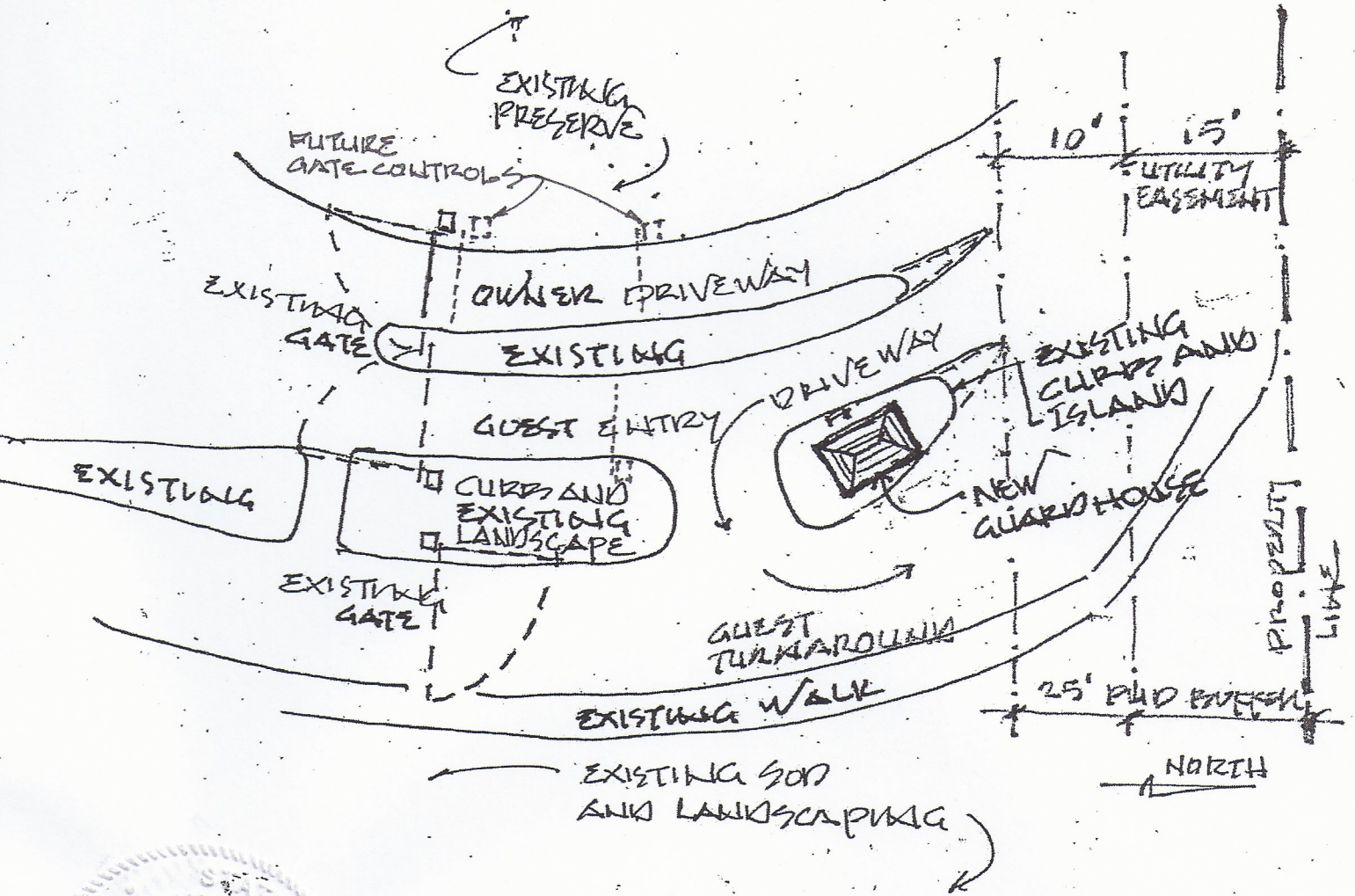
03.17.2014

DRAWING No.

A. 2 OF 3



NOTE:  
 FUTURE GATE CONTROL LOCATIONS  
 ARE SHOWN FOR FUTURE INSTALLATION  
 WHEN SUNK GATES ARE NO LONGER  
 NEEDED FOR GUARD HOUSE SECURITY.



PARTIAL SITE PLAN - GUARD HOUSE  
 NTS

CITY OF COCONUT CREEK  
 ADMINISTRATIVE REVIEW



<p>GUARD HOUSE PLAN &amp; ELEVATION</p> <p>CLUB CARIBE CONDOMINIUM ASSOCIATIONS, INC.</p> <p>AR 0013722      66002207</p> <p>ARCHITECT PAUL JUST INC.</p> <p>550 SOUTH FEDERAL HWY., FORT LAUDERDALE, FLA. 33301</p>		<p>DATE:</p> <p>03.17.2014</p> <p>DRAWING No.</p> <p>A. 3 OF 3</p>
--	--	--





February 12, 2014

Maya Tzinder  
Club Caribe  
5900 NW 61<sup>st</sup> Street  
Coconut Creek, Fl. 33073

**Re: Structural Engineering Service  
Guard House, Coconut Creek**

With reference to our meeting on 2/4/2014, we would be pleased to provide Structural Engineering Services for the above referenced project and our services include the following:

**General**

9x7x8'-0 tall masonry Construction guard house with hip roof.

**Design Services:** *Our fee for said service would be \$2,850.00*

- Structural Analysis and design
- Detail drawings
- Material and Construction specification

**Pre-Construction Phase Engineering Services:** *Our fee for said service would be \$850.00*

- Review shop drawings (Structural Elements)
- Product approval, if requested.
- Reply to Contractor and City comments

**Additional Services:** *(Optional) on hourly at \$85.00 hour*

- Periodic Site observation during construction
- We estimate a minimum of 4 site visits, each site visit would be \$350.00

Sincerely,

Lakdas Nanayakkara, P.E.  
#37590

Accepted by: \_\_\_\_\_ Date: \_\_\_\_\_

