

A

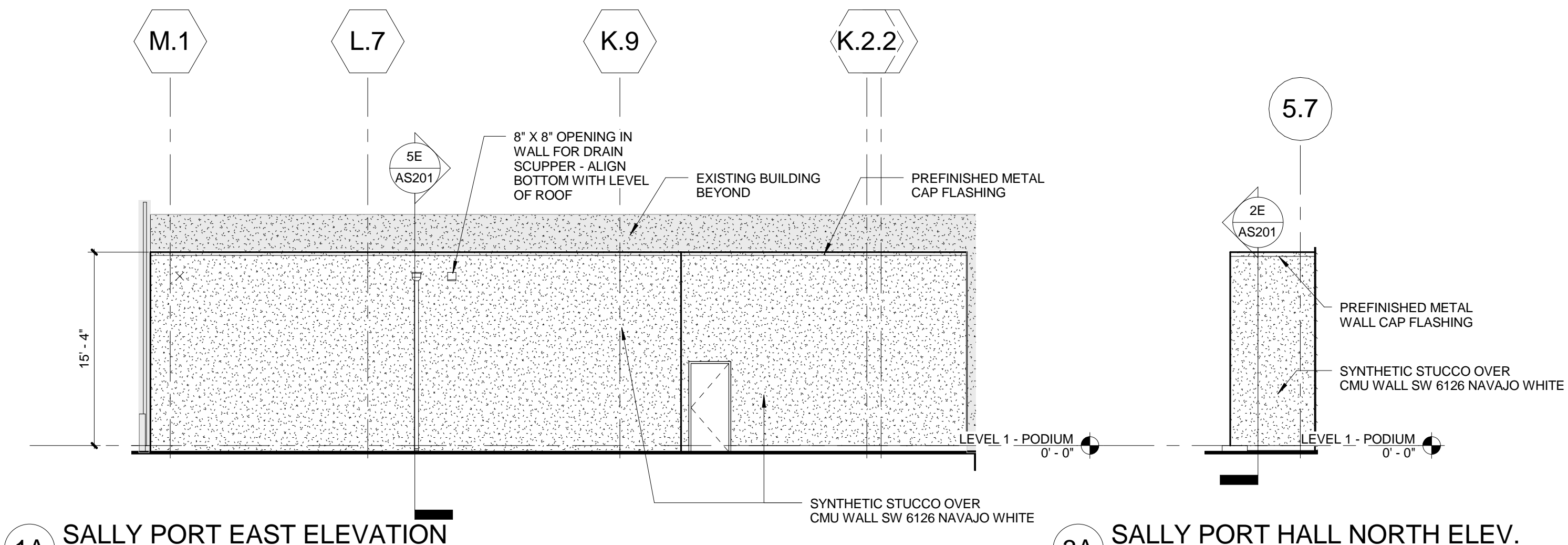
B

C

D

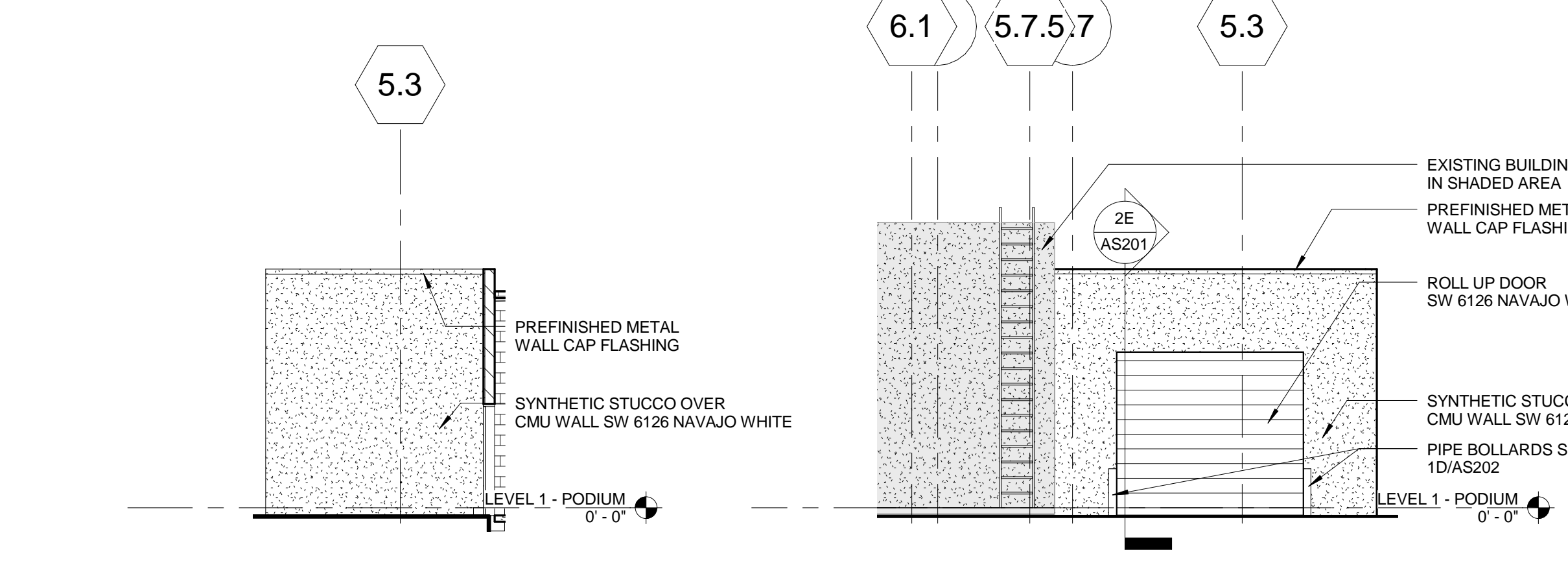
E

NOTE:
SW 6126 NAVAJO WHITE IS THE COLOR
OF THE SURROUNDING STRUCTURES



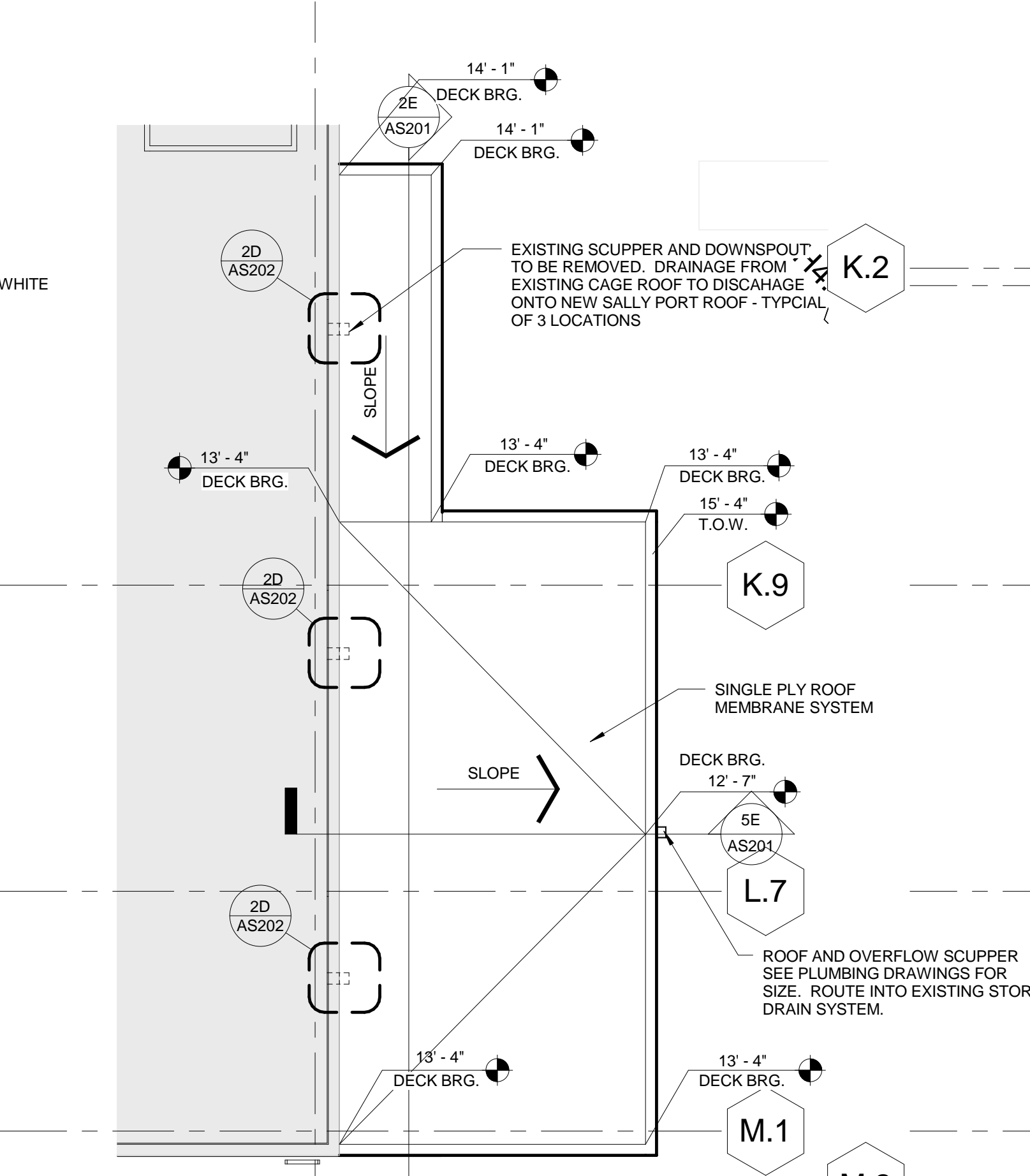
1A SALLY PORT EAST ELEVATION
1/8" = 1'-0"

3A SALLY PORT HALL NORTH ELEV.
1/8" = 1'-0"

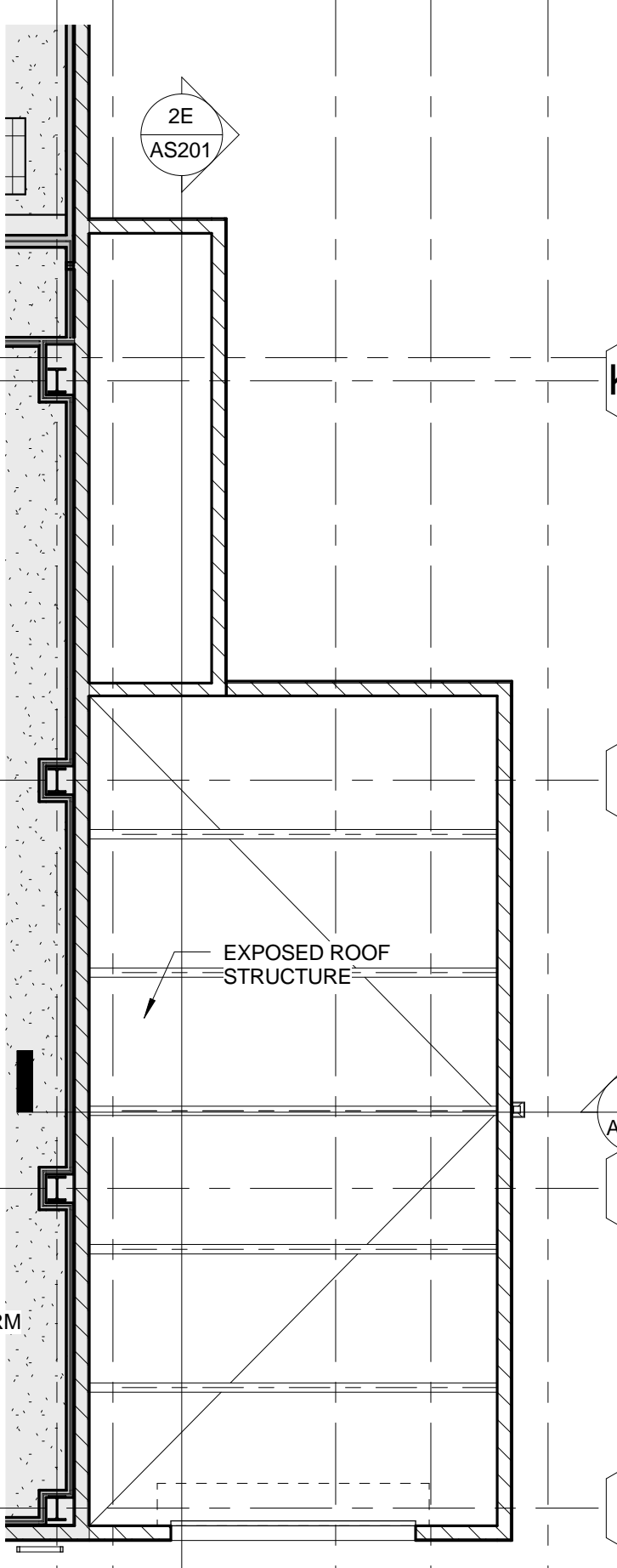


1B SALLY PORT NORTH ELEVATION
1/8" = 1'-0"

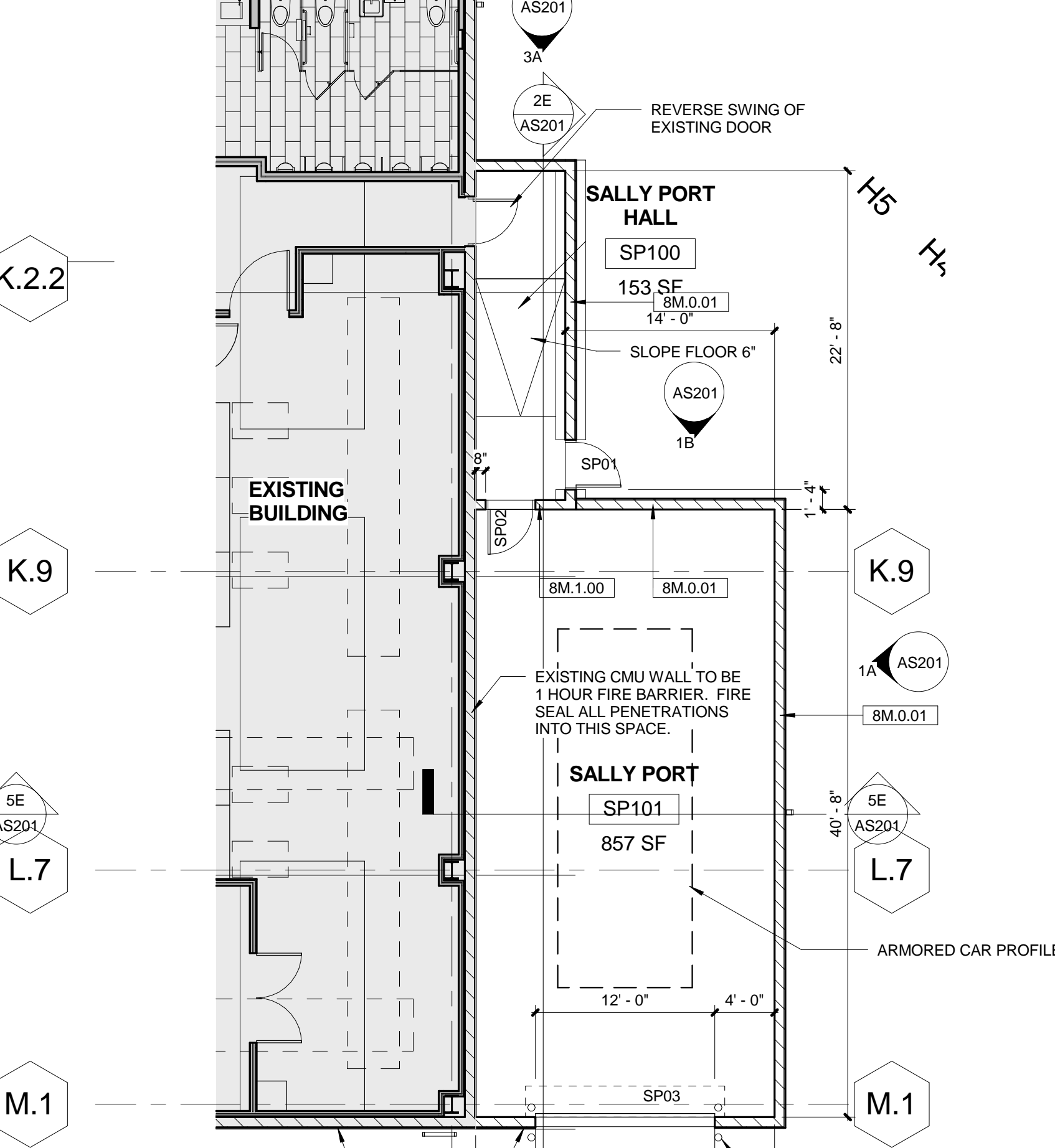
2B SALLY PORT SOUTH ELEVATION
1/8" = 1'-0"



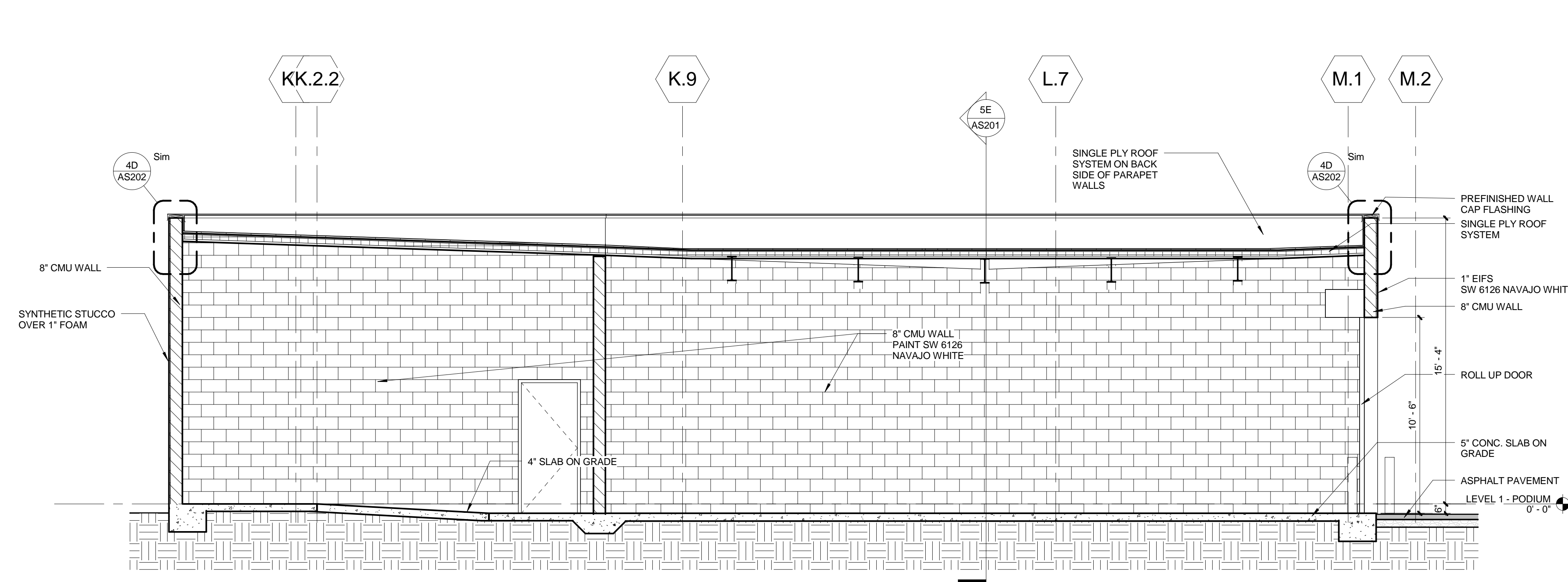
3C ENLARGED SALLY PORT ROOF PLAN
1/8" = 1'-0"



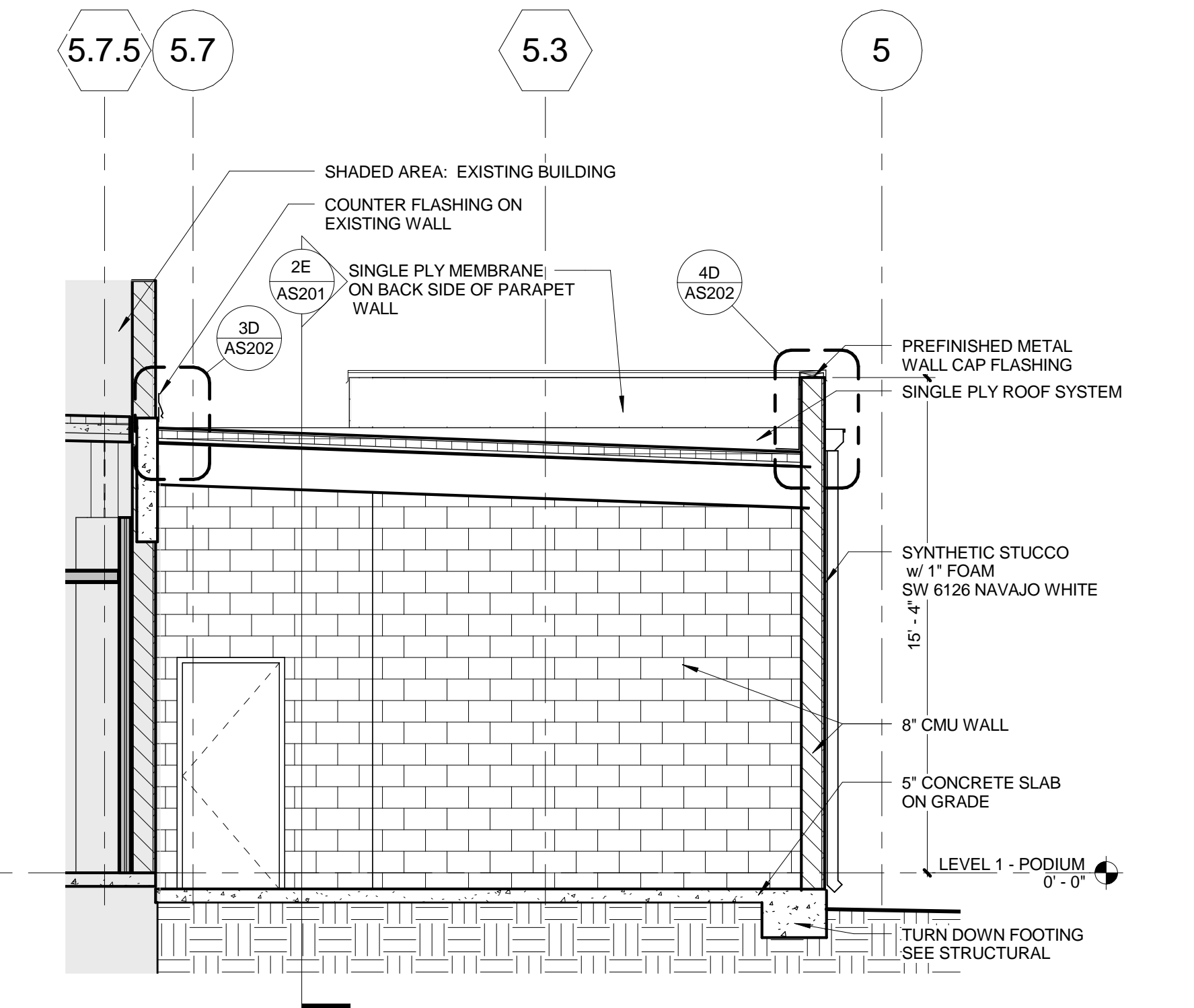
4C SALLY PORT REFLECTED CEILING PLAN
1/8" = 1'-0"



5C ENLARGED SALLY PORT FLOOR PLAN
1/8" = 1'-0"



2E SALLY PORT LONGITUDINAL SECTION
1/4" = 1'-0"



5E SALLY PORT CROSS SECTION
1/4" = 1'-0"

Date	Description
10-17-11	ISSUE FOR PERMIT

FRIEDMUTTER GROUP
 ARCHITECTURE / INTERIOR DESIGN / BRANDING STUDIOS
 SPECIALIZING IN MULTI-USE PROJECTS
 5600 NW 40TH STREET, SUITE 33073
 COCONUT CREEK, FLORIDA 33073
 TEL: 561.285.4445 FAX: 561.285.2776
 WWW.FRIEDMUTTER.COM
 P: 202.262.2445 P: 888.678.8486 P: 303.741.1199 P: 702.296.8277 P: 971.429.9519

STAMP

CONSULTANT

SALLY PORT
 COCONUT CREEK EXPANSION
 SEMINOLE COCONUT CREEK CASINO
 SEMINOLE TRIBE OF FLORIDA
 5600 NW 40TH STREET
 COCONUT CREEK, FLORIDA 33073

REV PLAN

DRAWN BY: FRIEDMUTTER GROUP
 CHECKED BY: BRAD FRIEDMUTTER
 ISSUE DATE: 10/27/2011
 JOB NUMBER: 2128015
 SHEET NAME: SALLY PORT FLOOR PLAN, ROOF PLAN SECTIONS & ELEVATIONS
 SHEET NUMBER: **AS201**