

Monument Sign Footing

SIGN STRUCTURE AREA: 104.5 SQ. FT.

SIGN FACE AREA and ADDRESS: 41 SQ. FT.

Sign Face Area is 39.2% of Sign Structure Area

ENGINEERING:

Only number signs are within city utility easements.

Monument signs (entrance feature signs) are not located within any LME. See sheets 001 and 002.

Existing and proposed utility Easements shown with distances indicated adjacent to water and sewer. See all sign location plans.

Signs B and C have been adjusted to be located outside the LME and city utility easements. However, due to the site constraints and need for signage to provide safe and efficient directions for movement of traffic several directional (way finding) signs need to be placed on the outer edge of LME's. The location of the signs is minimal and will not interfere with access to any lake bank.

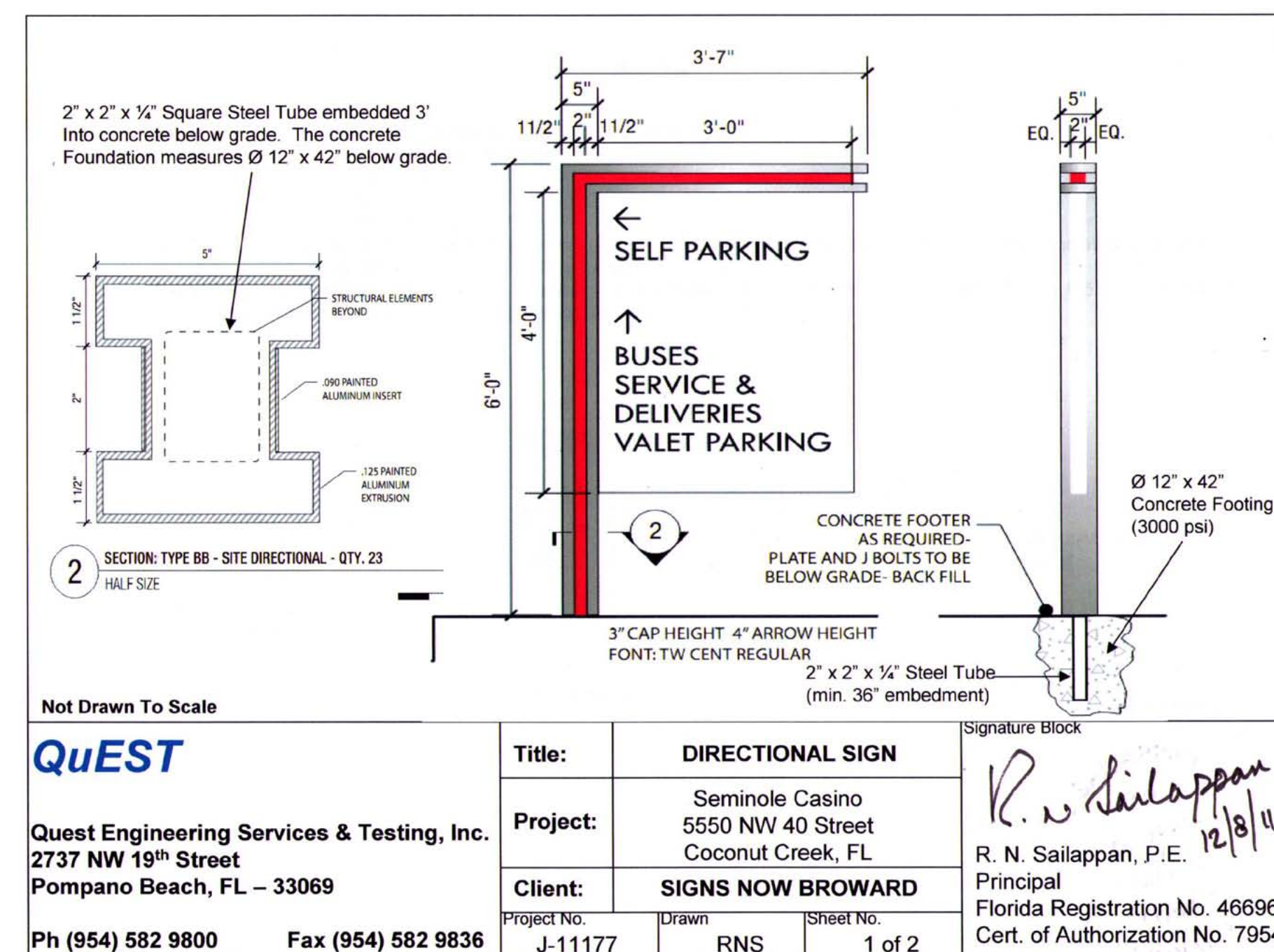
FDOT clear sight window ahs been included as part of the re-submittal indicating the proposed signs A and B are outside the line of sight.

All signs are a minimum of 5 feet from the property lines.

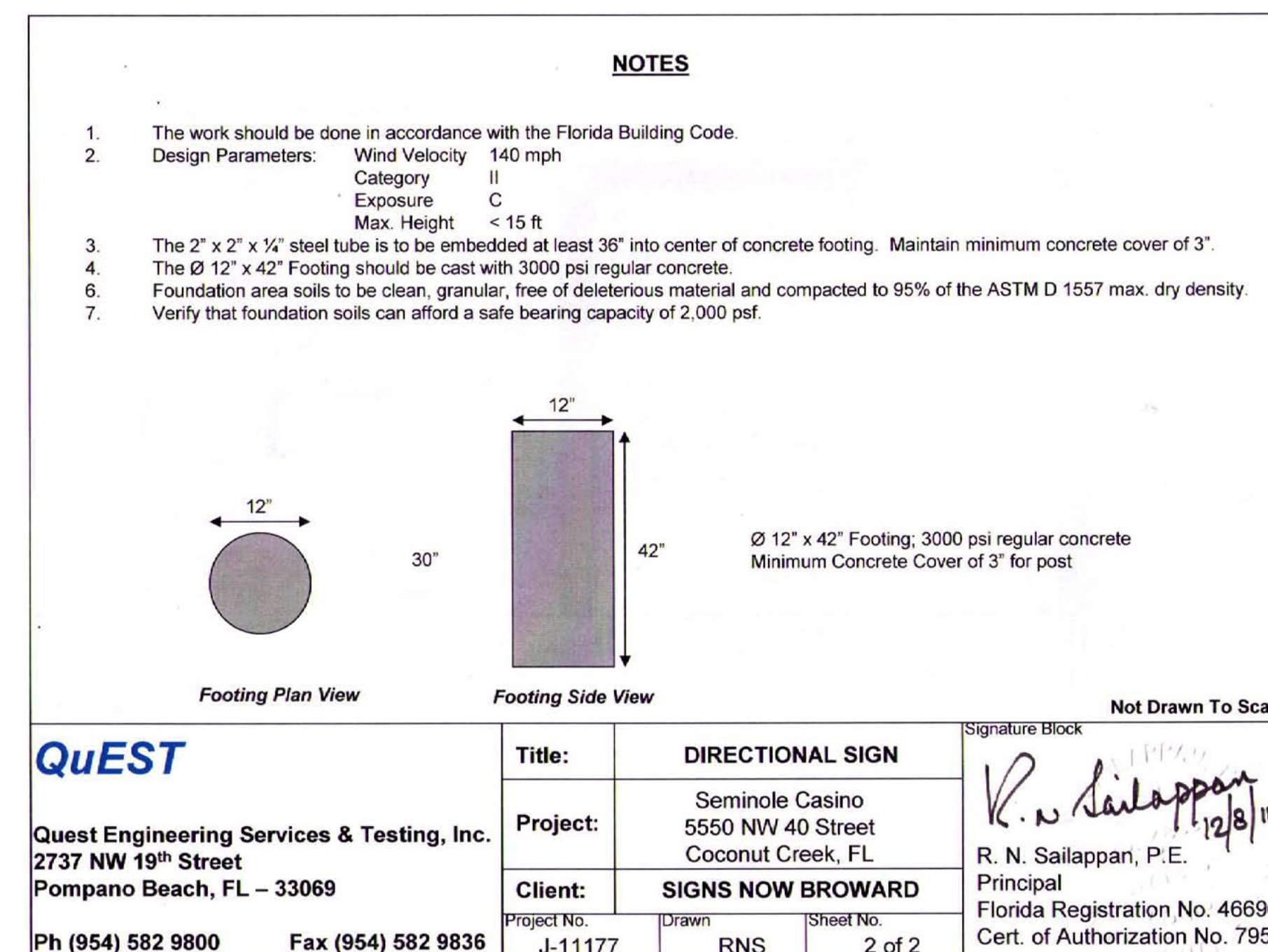
Plans have been adjusted to reference ground monument ID signs as to entrance feature signs eliminating the distance requirement.

LANDSCAPING:

All site signage locations have been coordinated with the existing/proposed landscape. Material that is in conflict will be mitigated/relocated within the property. Sign bases will be planted accordingly. Landscapes plans will be modified to reflect the signage locations and proposed plant material.



Not Drawn To Scale		Signature Block	
QuEST		R. N. Sailappan 12/8/11	
Quest Engineering Services & Testing, Inc. 2737 NW 19 th Street Pompano Beach, FL – 33069 Ph (954) 582 9800 Fax (954) 582 9836		Principal Florida Registration No. 46696 Cert. of Authorization No. 7954	
Title:	DIRECTIONAL SIGN	Project:	Seminole Casino 5550 NW 40 Street Coconut Creek, FL
Client:	SIGNS NOW BROWARD	Client:	SIGNS NOW BROWARD
Project No.:	J-11177	Drawn:	RNS
Sheet No.:	1 of 2	Sheet No.:	2 of 2



Not Drawn To Scale		Signature Block	
QuEST		R. N. Sailappan 12/8/11	
Quest Engineering Services & Testing, Inc. 2737 NW 19 th Street Pompano Beach, FL – 33069 Ph (954) 582 9800 Fax (954) 582 9836		Principal Florida Registration No. 46696 Cert. of Authorization No. 7954	
Title:	DIRECTIONAL SIGN	Project:	Seminole Casino 5550 NW 40 Street Coconut Creek, FL
Client:	SIGNS NOW BROWARD	Client:	SIGNS NOW BROWARD
Project No.:	J-11177	Drawn:	RNS
Sheet No.:	2 of 2	Sheet No.:	2 of 2

Directional Sign Footing

SIGN STRUCTURE AREA: 15 SQ. FT.

SIGN FACE AREA: 7 SQ. FT.

Sign Face Area is 46% of Sign Structure Area
Messages will not exceed 60% of Sign Structure Area.

Date	Description
FAIRDMUTTER GROUP ARCHITECTURE / INTERIOR DESIGN / BRANDING STUDIOS SPECIALIZING IN MULTIMEDIA PROJECTS HOTELS-CASINOS-RESTAURANTS-ENTERTAINMENT-HIGH-RISE RESIDENTIAL COMMERCIAL-INDUSTRIAL-RETAIL 1000 N. W. 10th Street, Suite 200, Pompano Beach, FL 33069 Phone: 314-861-5310 www.fairdmutter.com	
Klu Obias & Company 8161 Grand Boulevard Suite 200 St. Louis, Missouri 63112 Phone: 314-861-5310	
PHASE II TRANSPORTATION CENTER SEMINOLE COCONUT CREEK MASTER PLAN SEMINOLE TRIBE OF FLORIDA 5600 NW 40TH STREET COCONUT CREEK, FLORIDA 33073	
DRAWN BY: FG&K/CO CHECKED BY: ISSUE DATE: 12-12-11 JOB NUMBER: FG212B015 KO&CO2011018 SHEET NAME: SIGN FOOTINGS SHEET NUMBER: 009	