

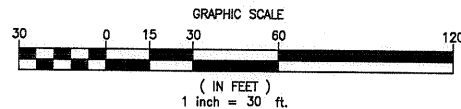
1

2

3

4

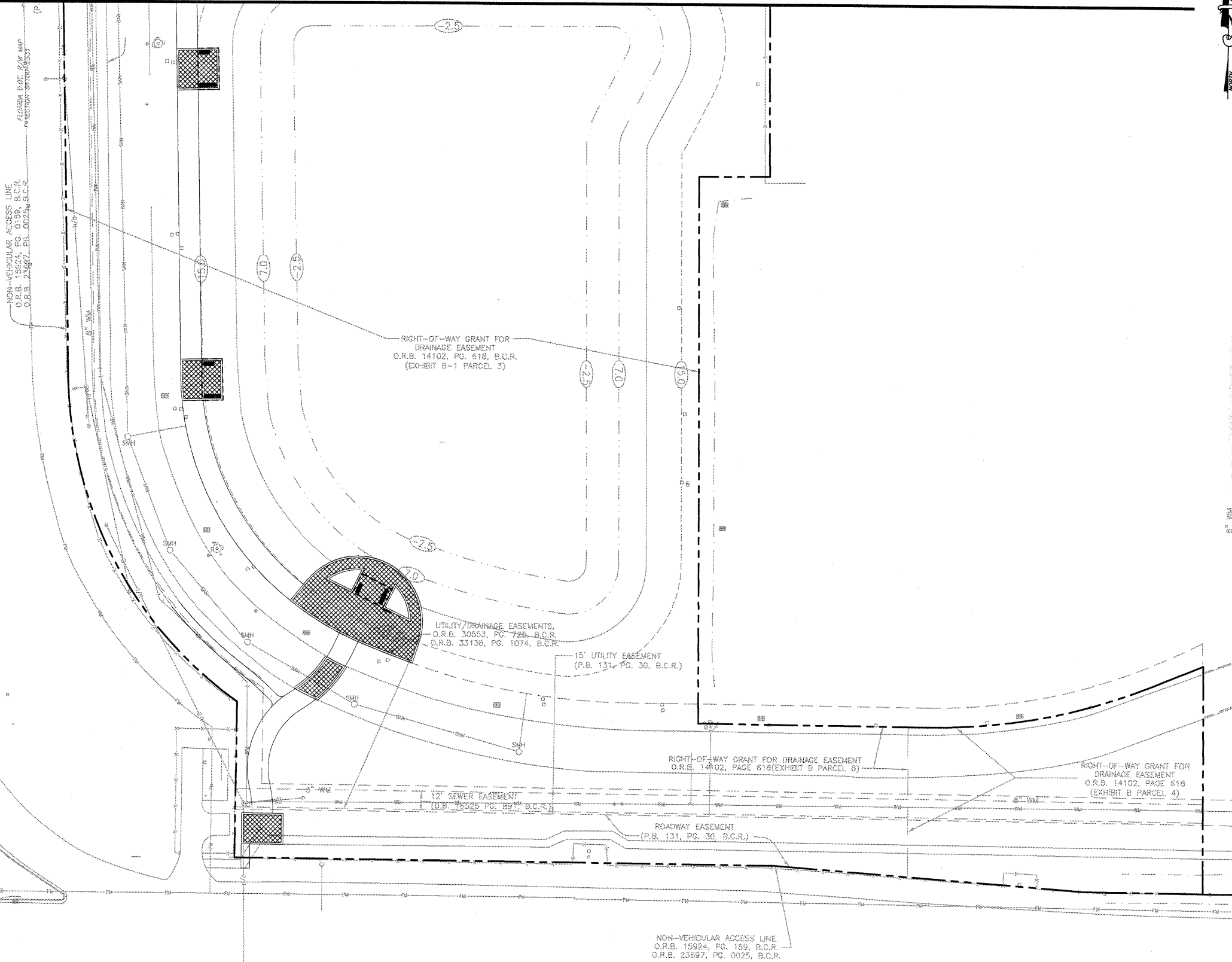
5



MATCH LINE - SHEET C-14

NOTES

1. ALL CONSTRUCTION SHALL BE IN ACCORDANCE WITH CITY OF COCONUT CREEK STANDARDS.
2. ALL UTILITIES WITH THE EXCEPTION OF MAJOR FPL LINES WILL BE PLACED UNDERGROUND IN ACCORDANCE WITH PHASING SCHEDULE AGREEMENT.
3. ALL CONSTRUCTION, MATERIALS, TESTING AND MAINTENANCE SHALL CONFORM TO THE STANDARDS AND SPECIFICATIONS OF LOCAL, COUNTY, STATE AND NATIONAL CODES WHERE APPLICABLE.
4. WHEN ANY OF THE GOVERNING REGULATORY AGENCIES' STANDARDS AND SPECIFICATIONS ARE IN CONFLICT, THE MORE STRINGENT SHALL APPLY.
5. ALL SIDEWALKS SHALL COMPLY WITH ADA.
6. ALL WATER LINES, SEWER LINES AND THEIR APPURTENANCES SHALL BE SEPARATED BY A MINIMUM OF 4 FEET FROM ALL OTHER UTILITIES.
7. WATER MAINS SHALL BE LAID TO PROVIDE A VERTICAL SEPARATION OF AT LEAST 18" BETWEEN THE BOTTOM OF THE WATER MAIN AND THE TOP OF THE SANITARY SEWER AND STORM DRAINAGE. WATER MAINS SHALL BE INSTALLED ABOVE SEWERS. STORM DRAINAGE SHALL BE LAID TO PROVIDE A VERTICAL SEPARATION OF AT LEAST 6".
- 8.



A	Date	Description

FRIEDMAN GROUP
ENGINEERS, PLANNERS, SURVEYORS
1000 N. W. 10th St., Suite 100
Fort Lauderdale, FL 33304
TEL: 954.581.1234
FAX: 954.581.1235
www.friedmangroup.com

Michael Singer Inc.
Suite 100, 1000 N.W. 10th St., Fort Lauderdale, FL 33304
TEL: 954.581.1234
FAX: 954.581.1235
www.michaelsinger.com

State of Florida
Professional Engineer
License No. 50588

1-24-11
TIM J. HALL, P.E.

PROJECT NAME

PHASE I TRANSPORTATION CENTER
SEMINOLE COCONUT CREEK CASINO
SEMINOLE TRIBE OF FLORIDA
5600 NW 40TH STREET
COCONUT CREEK, FLORIDA 33073

DRAWN BY
KEITH AND SCHNARS, PA/FL

CHECKED BY
T.J.H.

DATE
OCTOBER 18, 2010

JOB NUMBER
17796.42

SHEET NAME
PRELIMINARY
WATER & SEWER
PLAN

SHEET NUMBER

C-16

1

2

3

4

5