

1

2

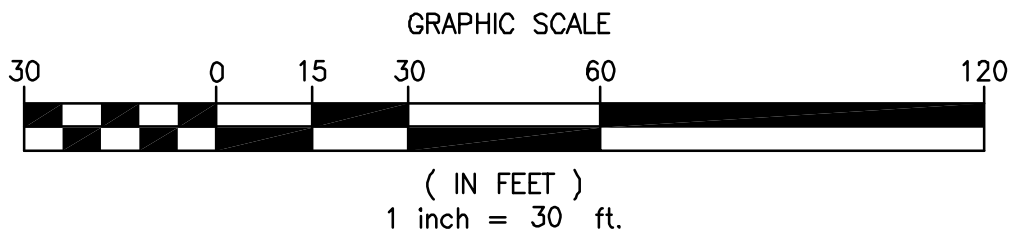
3

4

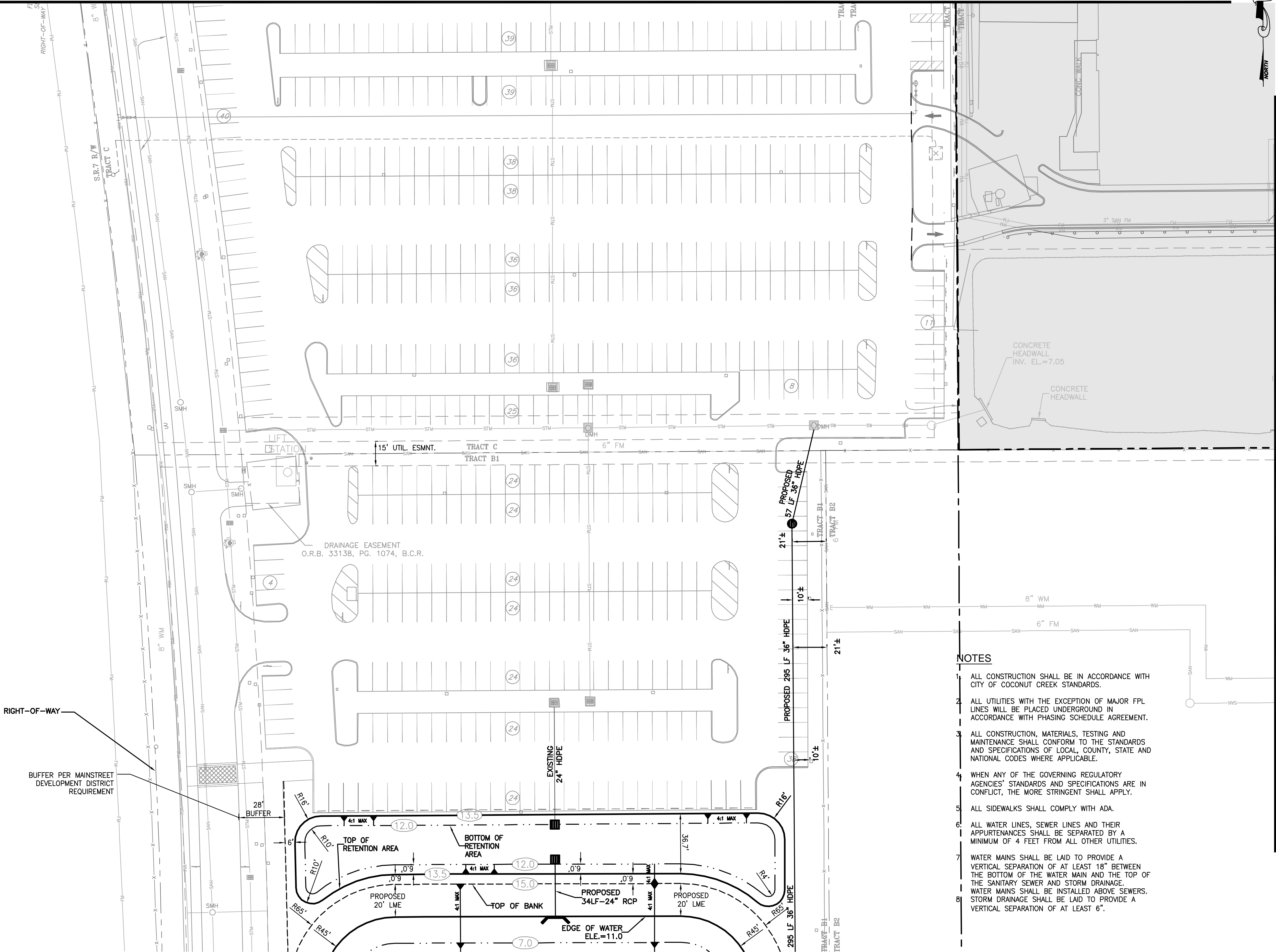
5

LEGEND:
INDICATES
TRACT 65 LIMITS
(NOT PART OF SITE PLAN SUBMITTAL)

NOTE:
PROPOSED SANITARY LATERALS
SHOWN FOR INFORMATIONAL PURPOSES ONLY
(REFER TO PLUMBING PLANS BY OTHERS)



MATCH LINE - SHEET C-19



- NOTES
- ALL CONSTRUCTION SHALL BE IN ACCORDANCE WITH CITY OF COCONUT CREEK STANDARDS.
 - ALL UTILITIES WITH THE EXCEPTION OF MAJOR FPL LINES WILL BE PLACED UNDERGROUND IN ACCORDANCE WITH PHASING SCHEDULE AGREEMENT.
 - ALL CONSTRUCTION, MATERIALS, TESTING AND MAINTENANCE SHALL CONFORM TO THE STANDARDS AND SPECIFICATIONS OF LOCAL, COUNTY, STATE AND NATIONAL CODES WHERE APPLICABLE.
 - WHEN ANY OF THE GOVERNING REGULATORY AGENCIES' STANDARDS AND SPECIFICATIONS ARE IN CONFLICT, THE MORE STRINGENT SHALL APPLY.
 - ALL SIDEWALKS SHALL COMPLY WITH ADA.
 - ALL WATER LINES, SEWER LINES AND THEIR APPURTENANCES SHALL BE SEPARATED BY A MINIMUM OF 4 FEET FROM ALL OTHER UTILITIES.
 - WATER MAINS SHALL BE LAID TO PROVIDE A VERTICAL SEPARATION OF AT LEAST 18" BETWEEN THE BOTTOM OF THE WATER MAIN AND THE TOP OF THE SANITARY SEWER AND STORM DRAINAGE. WATER MAINS SHALL BE INSTALLED ABOVE SEWERS. STORM DRAINAGE SHALL BE LAID TO PROVIDE A VERTICAL SEPARATION OF AT LEAST 6".
 -

MATCH LINE - SHEET C-23

MATCH LINE - SHEET C-21

Δ	Date	Description
	4/13/11	Issued for Administrative Approval
1	5/23/11	DRC RESPONSE TO COMMENTS

EDSA

Michael Singer Inc.

South Bay - Coconut Creek, FL
951-387-3044
michael.singer.com

FRIEDMUTTER GROUP

ARCHITECTURAL DESIGN STUDIOS

ARCHITECTS • PLANNERS • ENGINEERS • INTERIORS

1100 N. AVENUE C, SUITE 100, COCONUT CREEK, FL 33099

KEITH and SCHNARS, P.A.

ENGINEERS, PLANNERS, SURVEYORS

600 N. AVENUE C, SUITE 100, COCONUT CREEK, FL 33099

STAMP

State of Florida

Professional Engineer

License No. 50588

TIM J. HALL, P.E.

PROJECT NAME

PHASE I TRANSPORTATION CENTER

SEMINOLE COCONUT CREEK CASINO

SEMINOLE TRIBE OF FLORIDA

5600 NW 40TH STREET

COCONUT CREEK, FLORIDA 33073

DRAWN BY

KEITH AND SCHNARS, PA

CHECKED BY

T.J.H.

ISSUE DATE

APRIL 13, 2011

JOB NUMBER

17796.42

SHEET NAME

PRELIMINARY DRAINAGE PLANS

SHEET NUMBER

C-21

1

2

3

4

5