

NOTES

- ALL CONSTRUCTION SHALL BE IN ACCORDANCE WITH CITY OF COCONUT CREEK STANDARDS.
- ALL UTILITIES WITH THE EXCEPTION OF MAJOR FPL LINES WILL BE PLACED UNDERGROUND IN ACCORDANCE WITH PHASING SCHEDULE AGREEMENT.
- ALL CONSTRUCTION, MATERIALS, TESTING AND MAINTENANCE SHALL CONFORM TO THE STANDARDS AND SPECIFICATIONS OF LOCAL, COUNTY, STATE AND NATIONAL CODES WHERE APPLICABLE.

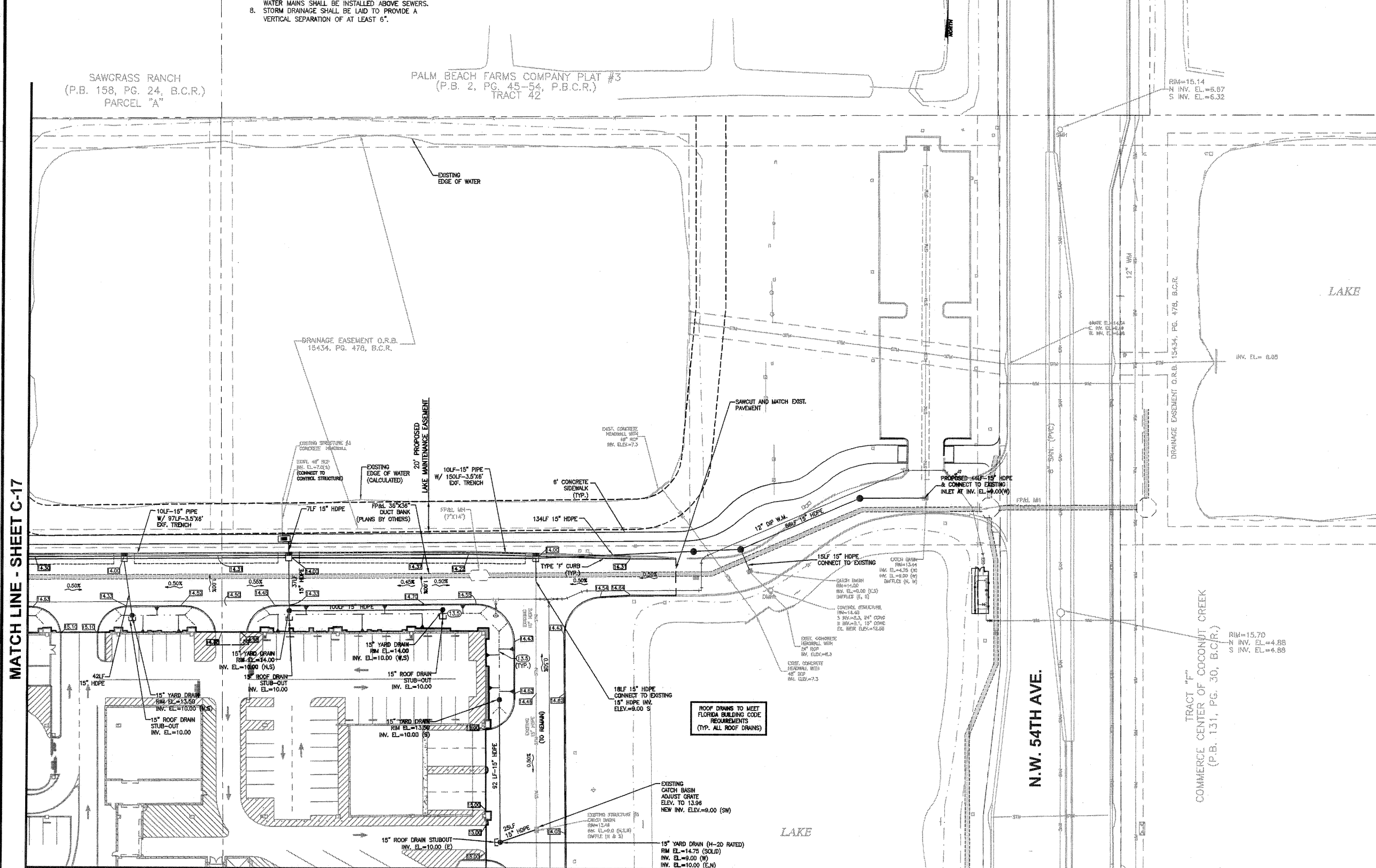
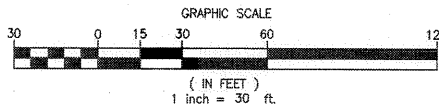
- WHEN ANY OF THE GOVERNING REGULATORY AGENCIES' STANDARDS AND SPECIFICATIONS ARE IN CONFLICT, THE MORE STRINGENT SHALL APPLY.
- ALL SIDEWALKS SHALL COMPLY WITH ADA.
- ALL WATER LINES, SEWER LINES AND THEIR APPURTENANCES SHALL BE SEPARATED BY A MINIMUM OF 4 FEET FROM ALL OTHER UTILITIES.
- WATER MAINS SHALL BE LAID TO PROVIDE A VERTICAL SEPARATION OF AT LEAST 18" BETWEEN THE BOTTOM OF THE WATER MAIN AND THE TOP OF THE SANITARY SEWER AND STORM DRAINAGE. WATER MAINS SHALL BE INSTALLED ABOVE SEWERS. STORM DRAINAGE SHALL BE LAID TO PROVIDE A VERTICAL SEPARATION OF AT LEAST 6".

LEGEND

INDICATES TRACT 65 LIMITS (NOT PART OF SITE PLAN SUBMITTAL)

NOTE:

PROPOSED SANITARY LATERALS SHOWN FOR INFORMATIONAL PURPOSES ONLY (REFER TO PLUMBING PLANS BY OTHERS)



A	Date	Description
1	4/13/11	Issued for Administrative Approval
2	5/23/11	Issued for Administrative Approval
3	6/13/11	Issued for Administrative Approval
4	9/8/11	Issued for Administrative Approval

KEITH AND SCHNARS, P.A.
 ENGINEERS, PLANNERS, SURVEYORS
 5600 NW 40TH STREET, SUITE 200
 COCONUT CREEK, FLORIDA 33073
 PHONE: 305.385.1111
 FAX: 305.385.1112
 E-MAIL: info@ks-engineers.com

State of Florida
 Professional Engineer
 License No. 50588
 TIM J. HALL, P.E.

SEP 28 2011

PHASE I TRANSPORTATION CENTER
 SEMINOLE COCONUT CREEK CASINO
 SEMINOLE TRIBE OF FLORIDA
 5600 NW 40TH STREET
 COCONUT CREEK, FLORIDA 33073

DESIGNED BY	KEITH AND SCHNARS, PA
CHECKED BY	T.J.H.
ISSUE DATE	APRIL 13, 2011
JOB NUMBER	17796.42
SHEET NAME	PRELIMINARY DRAINAGE PLANS
SHEET NUMBER	C-18