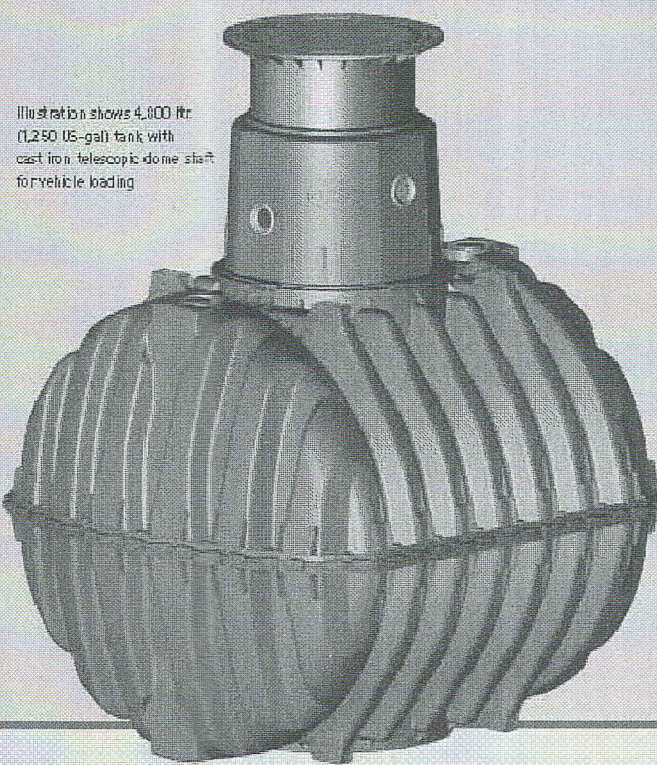


### The modular system Carat S

Choose your tank size



Carat S underground tank for vehicle loading. Size 2,200 - 13,000 lbs (100 - 3,400 US-gal). Designed to be used in conjunction with the vehicle loading telescopic dome shaft. The access dome is designed in accordance to DIN testing.

Capacity/lbs	US-gal	Order no.
2,200	100	072001
3,750	170	072002
4,900	225	072003
6,500	300	072004
7,700	350	072005
8,600	390	072006
11,000	500	072007

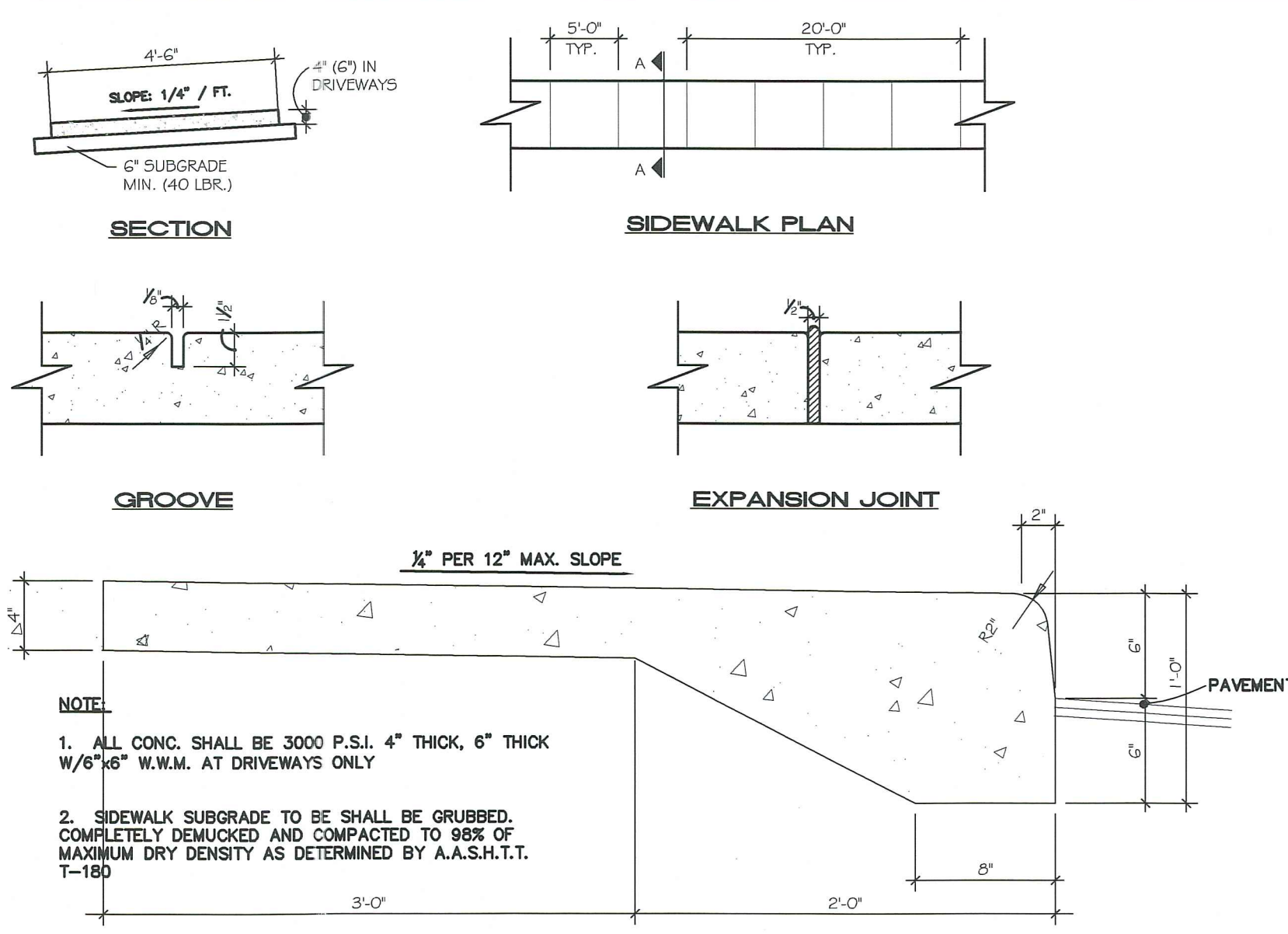
Dimensions/weight	2,200 lbs	3,750 lbs	4,900 lbs	6,500 lbs	7,700 lbs	8,600 lbs	11,000 lbs
Length	2,000 mm (81.1 inch)	2,200 mm (86.6 inch)	2,200 mm (86.6 inch)	2,200 mm (86.6 inch)	2,200 mm (86.6 inch)	2,200 mm (86.6 inch)	2,200 mm (86.6 inch)
Width	1,565 mm (61.6 inch)	1,745 mm (68.7 inch)	1,816 mm (71.5 inch)	1,950 mm (76.8 inch)	2,150 mm (84.6 inch)	2,150 mm (84.6 inch)	2,150 mm (84.6 inch)
Height (including tank dome)	2,000 mm (78.7 inch)	2,300 mm (90.5 inch)	2,450 mm (96.5 inch)	2,700 mm (106.3 inch)	2,700 mm (106.3 inch)	2,700 mm (106.3 inch)	2,700 mm (106.3 inch)
Height of tank dome	410 mm (16.1 inch)	410 mm (16.1 inch)	410 mm (16.1 inch)	410 mm (16.1 inch)	410 mm (16.1 inch)	410 mm (16.1 inch)	410 mm (16.1 inch)
Internal tank dome	400 mm (15.7 inch)	400 mm (15.7 inch)	400 mm (15.7 inch)	400 mm (15.7 inch)	400 mm (15.7 inch)	400 mm (15.7 inch)	400 mm (15.7 inch)
Weight	120 kg (265 lbs)	150 kg (331 lbs)	165 kg (364 lbs)	220 kg (485 lbs)	270 kg (595 lbs)	270 kg (595 lbs)	270 kg (595 lbs)

Technical data

Load	2,200 lbs	3,750 lbs	4,900 lbs	6,500 lbs	7,700 lbs	8,600 lbs	11,000 lbs
Max. axle load	Suitable for vehicle loading	Suitable for vehicle loading	Suitable for vehicle loading	Suitable for vehicle loading	Suitable for vehicle loading	Suitable for vehicle loading	Suitable for vehicle loading
Earth covering	400 x 1,200 mm (15.7 x 47.2 inch)	400 x 1,200 mm (15.7 x 47.2 inch)	400 x 1,200 mm (15.7 x 47.2 inch)	400 x 1,200 mm (15.7 x 47.2 inch)	400 x 1,200 mm (15.7 x 47.2 inch)	400 x 1,200 mm (15.7 x 47.2 inch)	400 x 1,200 mm (15.7 x 47.2 inch)
Groundwater	Groundwater stable	Groundwater stable	Groundwater stable	Groundwater stable	Groundwater stable	Groundwater stable	Groundwater stable
Groundwater stable	up to the middle of the tank	up to the middle of the tank	up to the middle of the tank	up to the middle of the tank	up to the middle of the tank	up to the middle of the tank	up to the middle of the tank
Required earth covering	400 mm (15.7 inch)	400 mm (15.7 inch)	400 mm (15.7 inch)	400 mm (15.7 inch)	400 mm (15.7 inch)	400 mm (15.7 inch)	400 mm (15.7 inch)

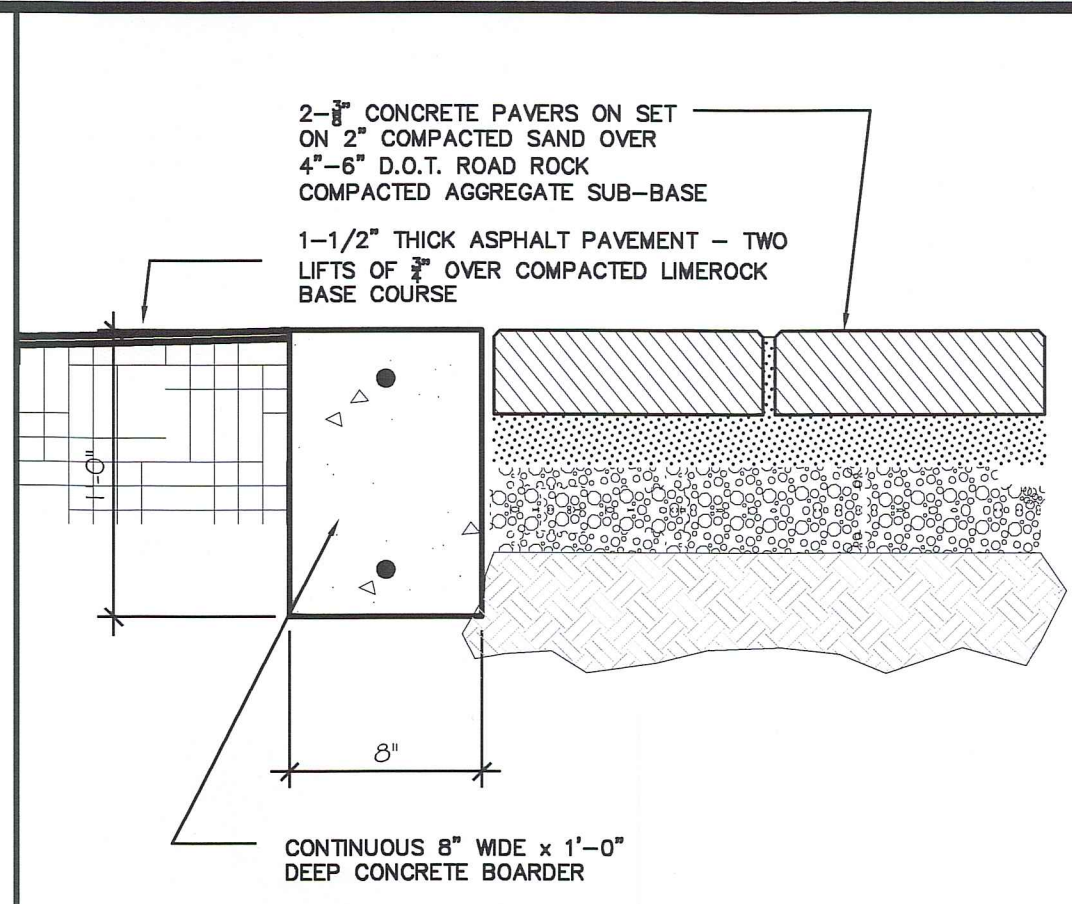
DTL. FOR (2) 1250 GAL CISTERNS

11

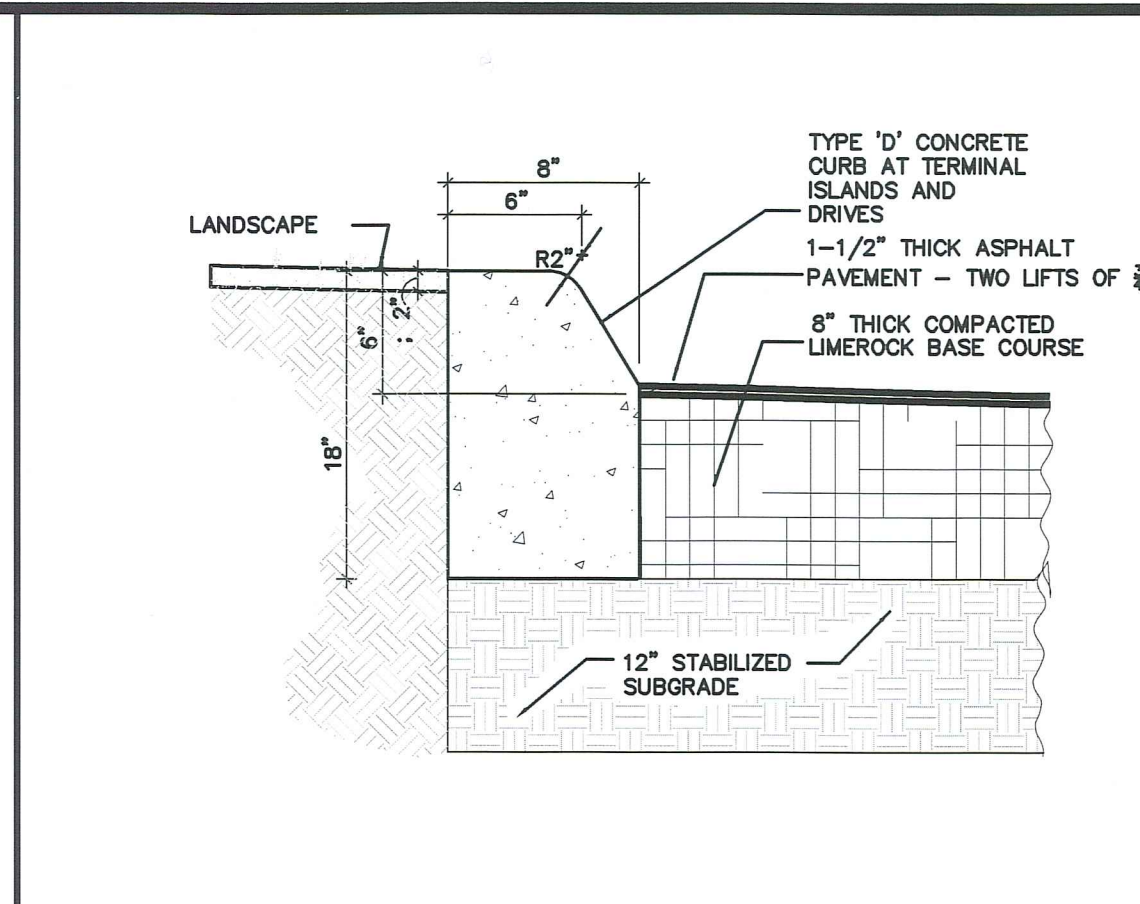


SIDEWALK INTEGRAL JOINT DETAILS

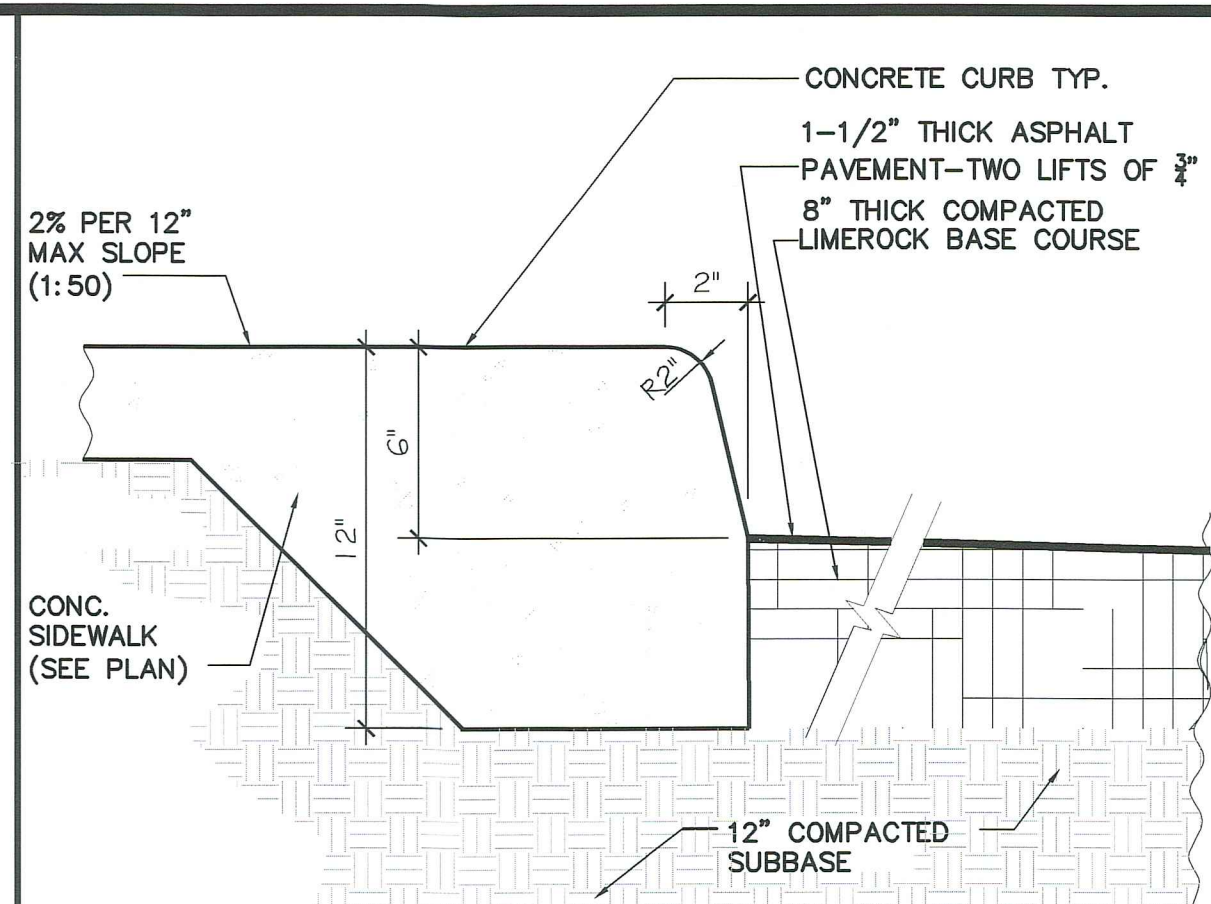
10



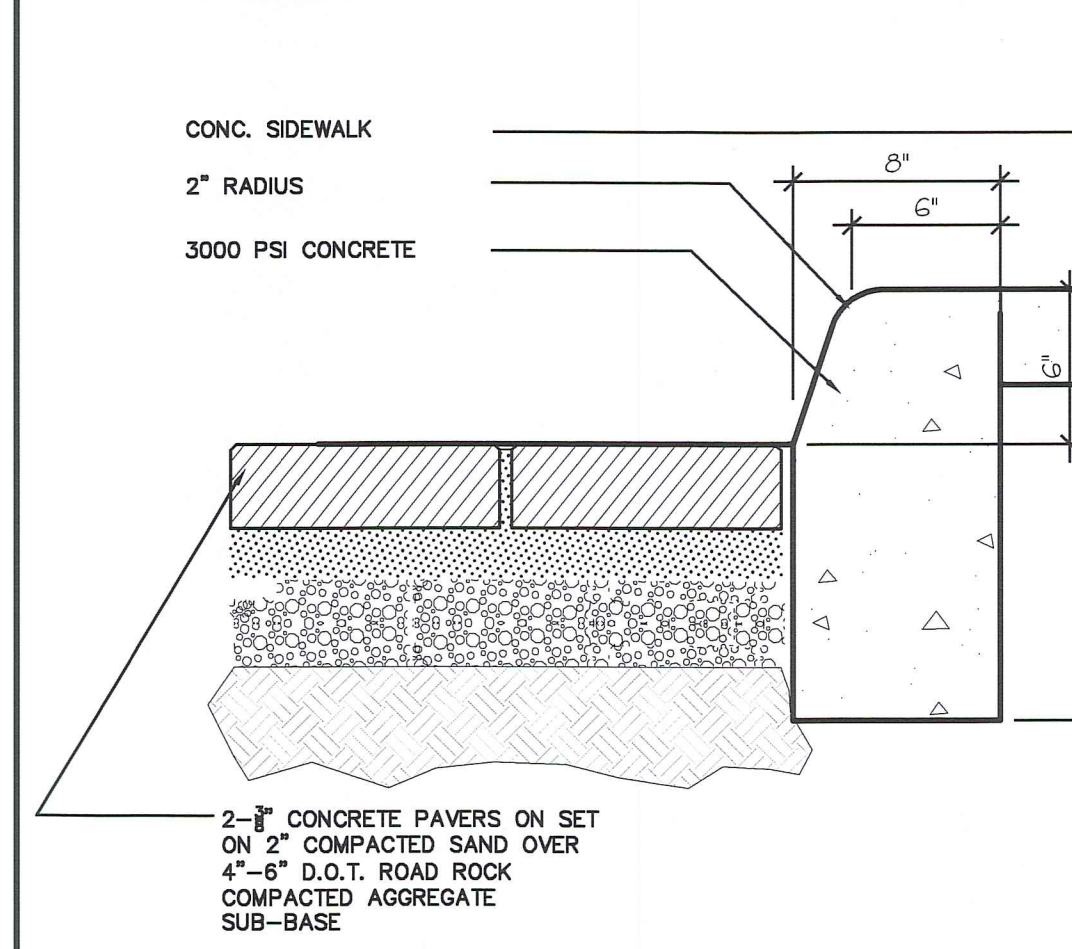
CONCRETE HEADER PAV.DTL. 09



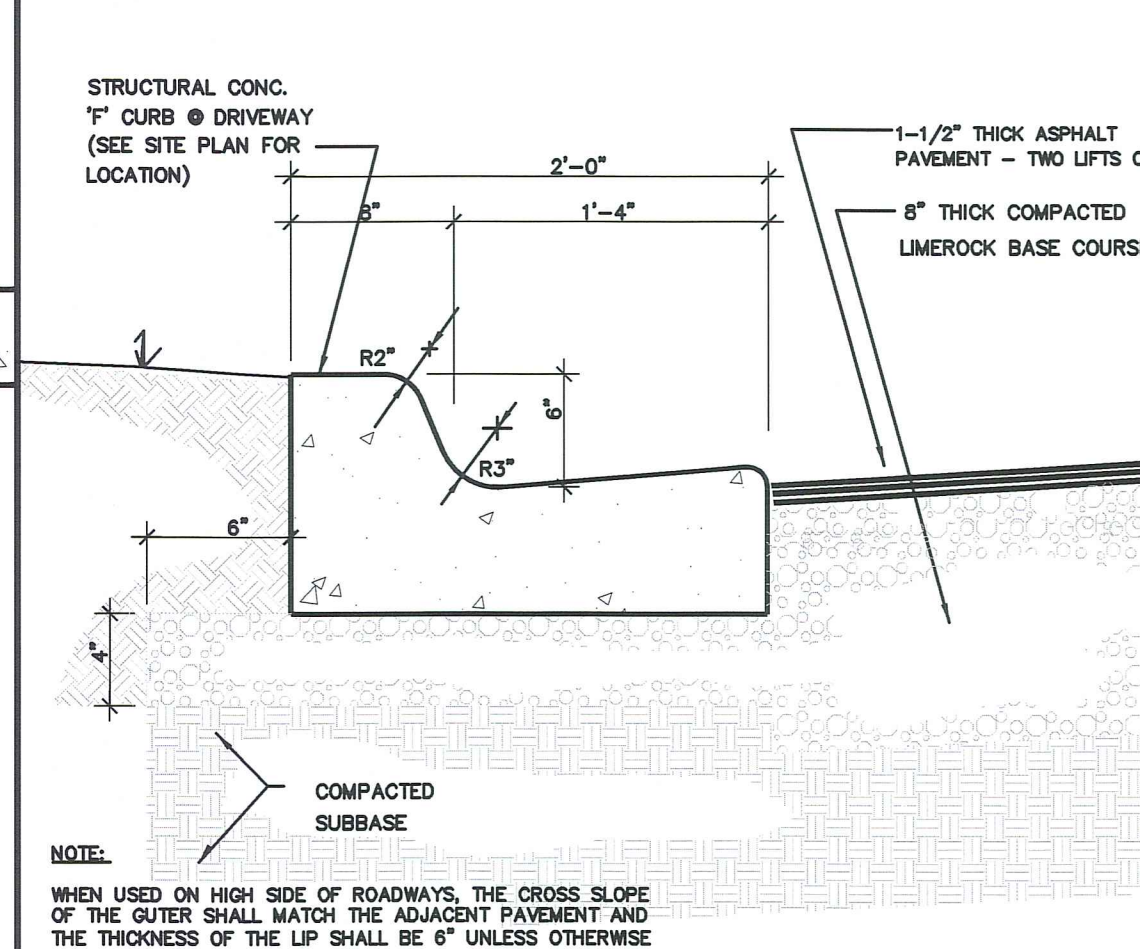
TYPE "D" CURB 07



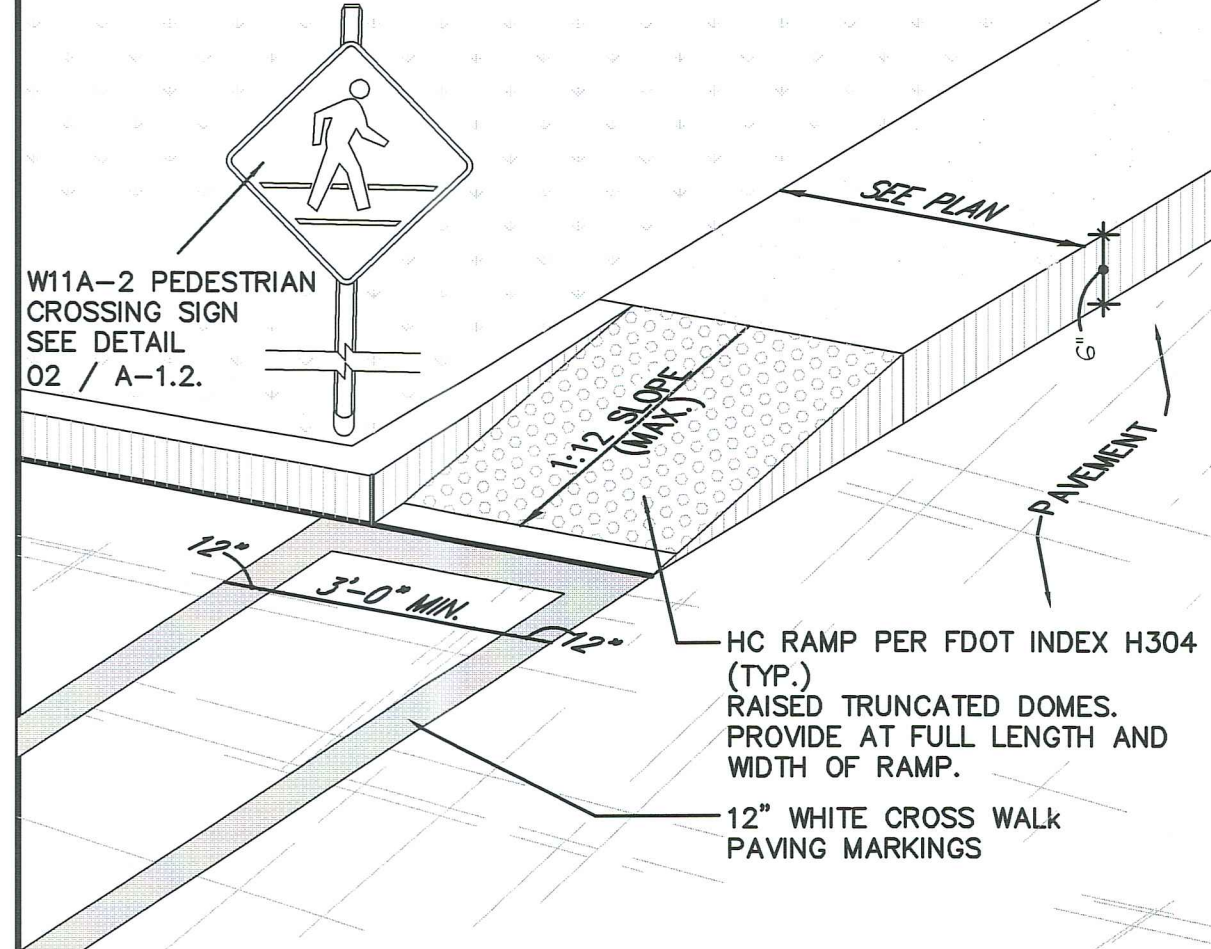
INTEGRAL SIDEWALK/CURB 04



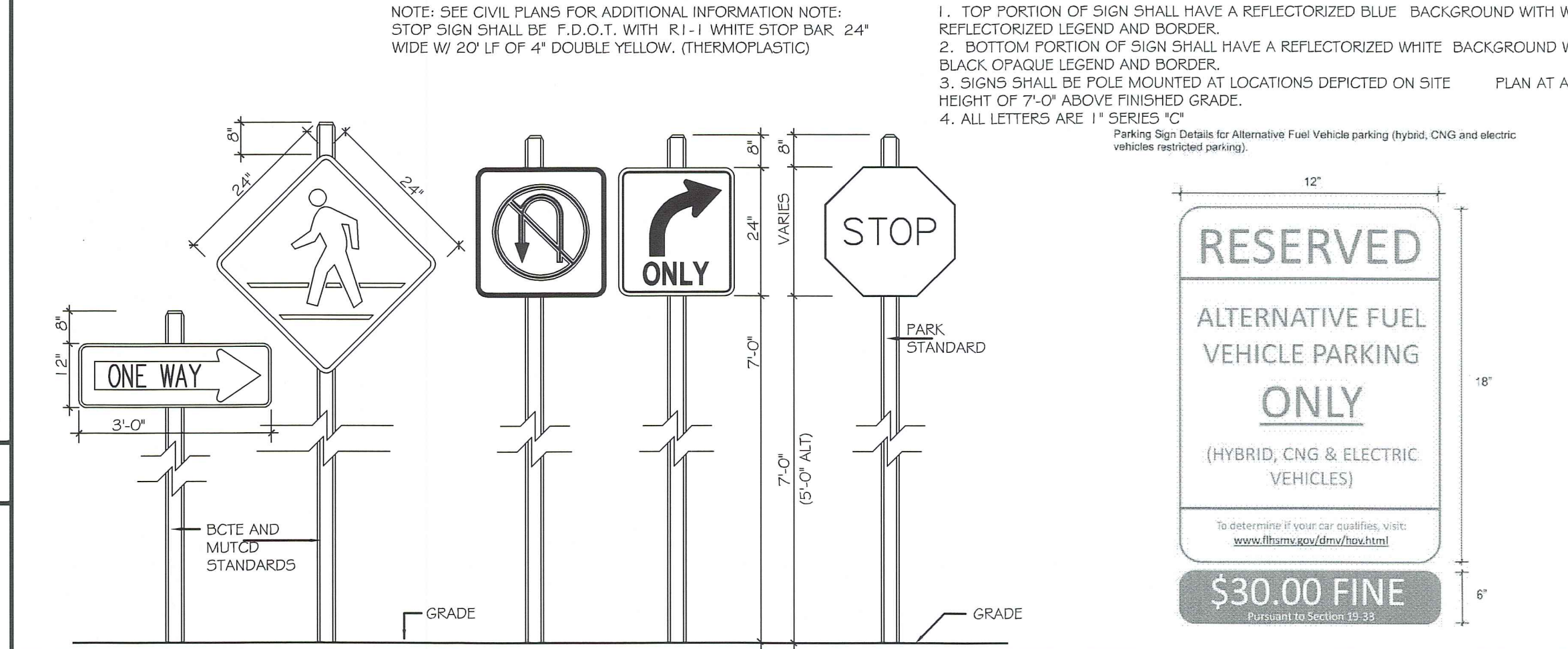
CURB PAVER DTL. 08



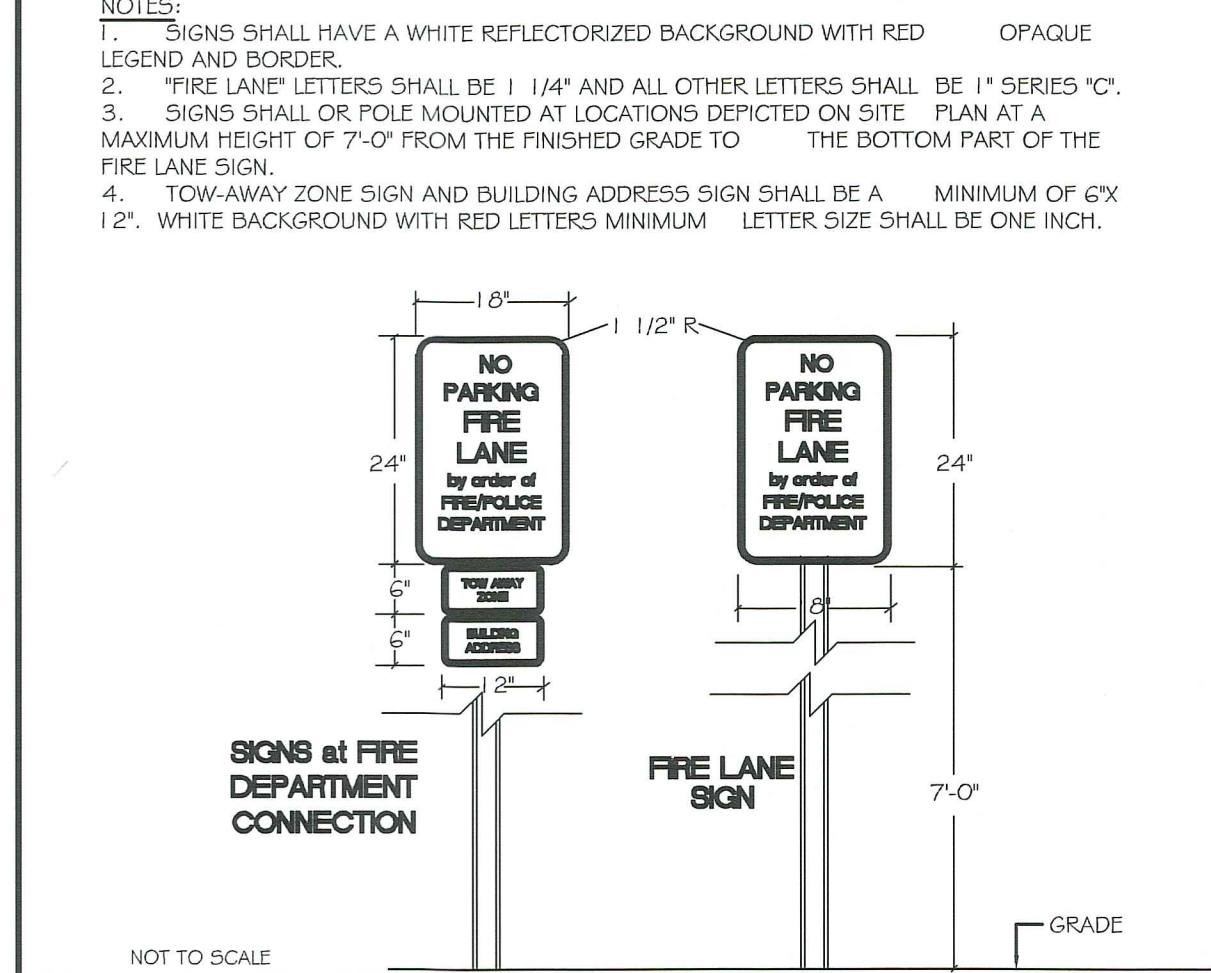
F-CURB ENTRY DRIVE 06



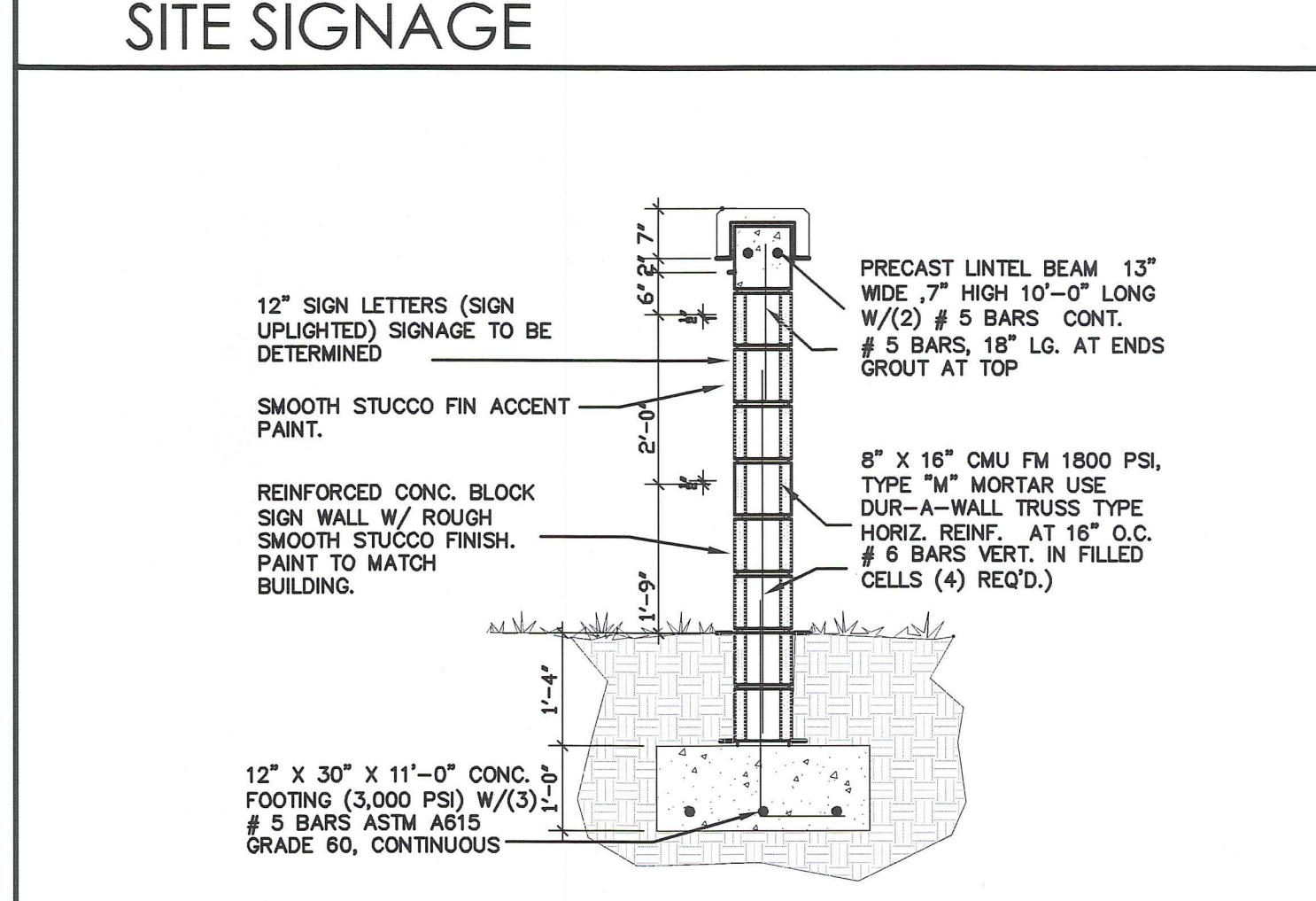
ADA CROSSING 03



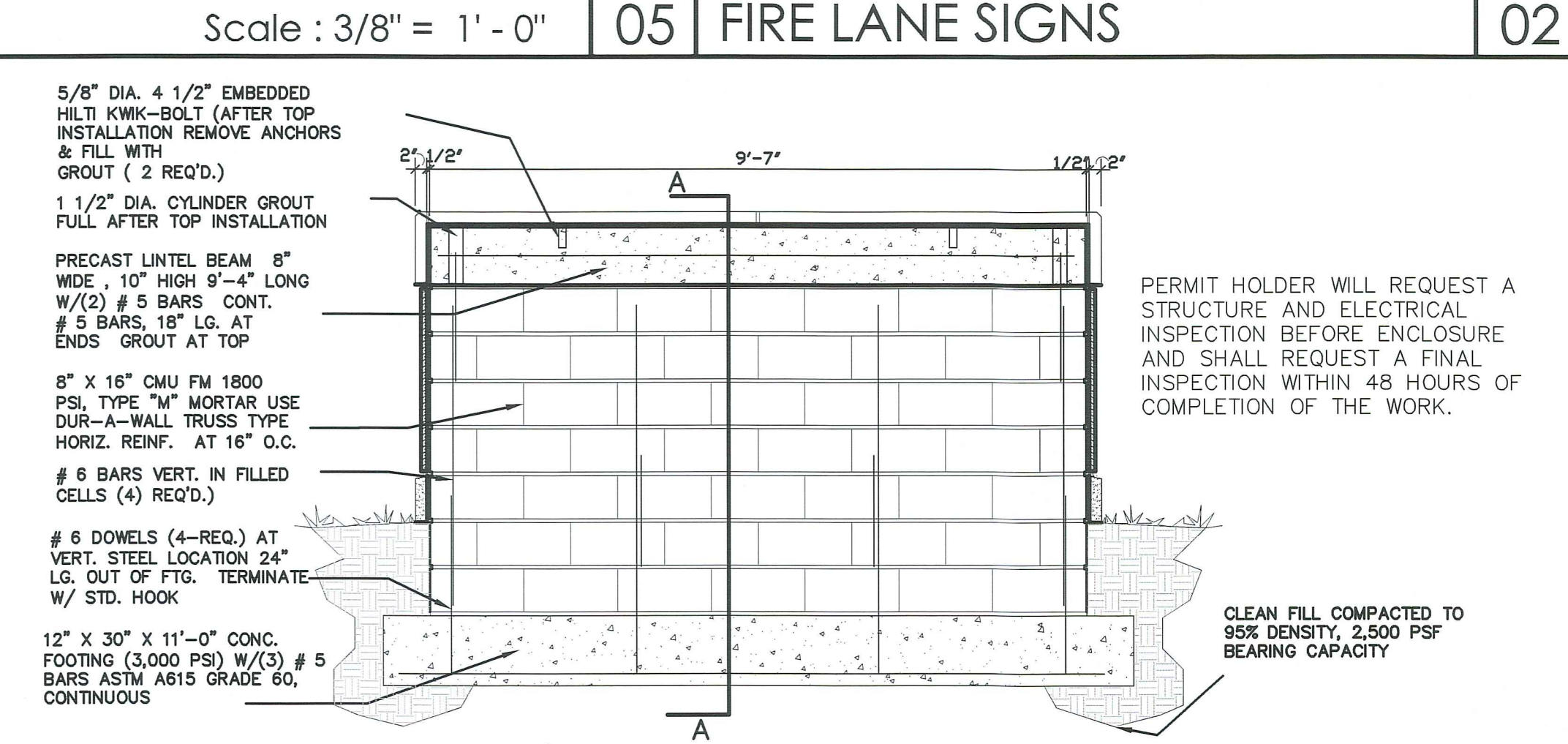
SITE SIGNAGE 05



FIRE LANE SIGNS 02



SECTION AA



SECT/ELEVATION

PARCEL I.D. SIGN TO MATCH APPROVED PUD SIGN GUIDELINES

Scale: 1/2" = 1'-0" 01

CONSULTANT

Gregory B. Molina  
FL REG. # AR 93354  
DATE: 03-26-13  
COPYRIGHT © 2013  
ALL RIGHTS RESERVED. THIS DOCUMENT DESIGN OR PART THEREOF MAY NOT BE REPRODUCED IN ANY FORM WITHOUT WRITTEN CONSENT FROM GBM ARCHITECTURE PA

GBM ARCHITECTURE PA

ARCHITECTURE MASTER PLANNING

2801 SW 3RD AVENUE, UNIT F B FORT LAUDERDALE, FLORIDA 33315  
T: 954.713.6101  
F: 954.812.6600  
E: GREGM@GBMARCHITECTURE.COM  
WEB: WWW.GBMARCHITECTURE.COM

DRG SUBMITTAL FOR  
**COCONUT CREEK MOB**  
4890 ACCESS ROAD, LLC  
4890 ACCESS RD COCONUT CREEK, FLORIDA 33073

DRAWING ISSUE DATES:

NO.	DATE	REVISIONS
1	05-13-13	COORDINATION REVISIONS

SITE DETAILS

SHEET  
**A-1.3**  
PROJECT: 130218  
DATE: 03-26-13  
PERMIT NO.