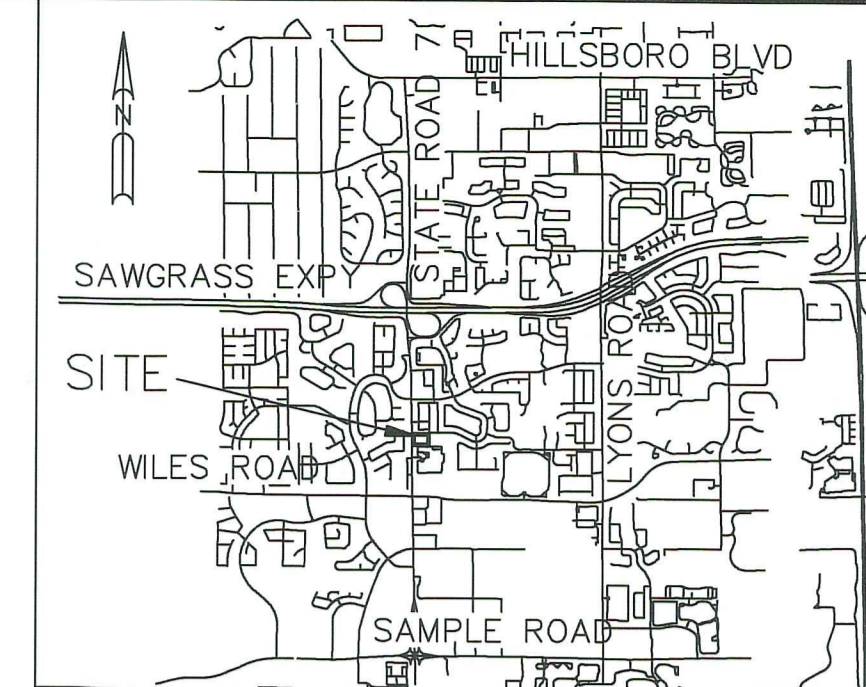


TRACT "K"
(P.B. 160, PGS. 18)

DESCRIPTION:
TRACT E OF WILES/BUTLER PLAT ONE, ACCORDING TO THE PLAT THEREOF, AS RECORDED IN PLAT BOOK 160, AT PAGE 18, OF THE PUBLIC RECORDS OF BROWARD COUNTY, FLORIDA.

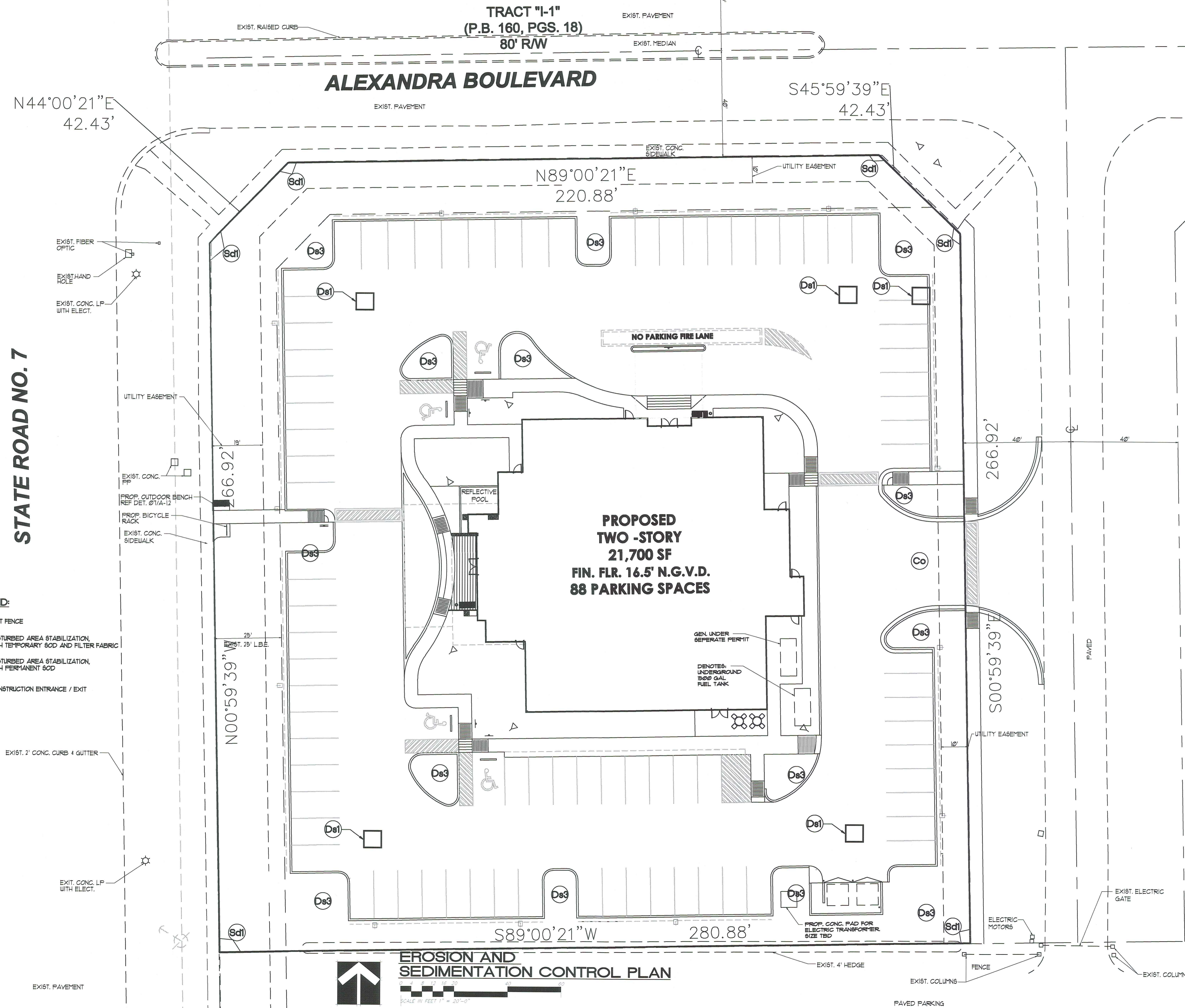


CONSULTANT
STATE OF FLORIDA
REGISTERED ARCHITECT
Gregory B. Moine
FL REG. # AR 83384
DATE: 03-26-13
COPYRIGHT © 2013
ALL RIGHTS RESERVED. THIS DOCUMENT, DESIGN, OR PART THEREOF, MAY NOT BE REPRODUCED IN ANY FORM WITHOUT THE WRITTEN CONSENT FROM GREG B. MOINE ARCHITECTURE PA.

GBM
ARCHITECTURE PA
ARCHITECTURE
MASTER PLANNING
AA26003222

850 1 SW 8RD AVENUE, UNIT F 8
FORT LAUDERDALE, FLORIDA 33311
T: 954.713.6101
O: 954.812.6800
E: GREG@GBMARCHITECTURE.COM
WEB: WWW.GBMARCHITECTURE.COM

DRG SUBMITTAL FOR
COCONUT CREEK MOB
4890 ACCESS ROAD, LLC
4890 ACCESS RD COCONUT CREEK, FLORIDA 33073



N44°00'21"E
42.43'

S45°59'39"E
42.43'

N89°00'21"E
220.88'

TRACT "F"
(P.B. 160, PGS. 18)

SOIL EROSION + SEDIMENTATION CONTROL NARRATIVE:

DESCRIPTION:
DRG SUBMITTAL FOR COCONUT CREEK MOB
4890 ACCESS ROAD, LLC
THIS PROJECT IS LOCATED IN CITY OF COCONUT CREEK, BROWARD COUNTY, FL

OWNER:
4890 ACCESS ROAD, LLC
GL HOMES, MICHAEL FRIEDMAN
1600 SAWGRASS CORPORATE PARKWAY
SUITE 400
SUNRISE, FL 33326
(954) 663-0313

VEGETATION:
THE SITE IS RELATIVELY FLAT WITH EXISTING PERIMETER BERRY AND SOILS WILL BE IMPORTED FOR THE BUILDING PAD.

DATES OF CONSTRUCTION:
IT IS ANTICIPATED THAT CONSTRUCTION WILL BEGIN IN JANUARY 2012 AND TO BE COMPLETED IN JANUARY 2013.
THE INSTALLATION OF EROSION CONTROL MEASURES AND PRACTICES SHALL BE INSTALLED PRIOR TO OR CONCURRENT WITH LAND DISTURBING ACTIVITIES.

EROSION CONTROL PROGRAM:
CLEARING AND GRADING OPERATIONS WILL BE MINIMUM FOR THIS SITE. LAND DISTURBING WILL BE SCHEDULED TO LIMIT EXPOSURE OF BARE SOILS TO EROSION ELEMENTS. STORM WATER MANAGEMENT STRUCTURES WILL BE EMPLOYED TO PREVENT EROSION IN AREAS OF CONCENTRATED WATER FLOW. DISTURBED AREAS WILL BE GRASSED IMMEDIATELY AFTER GRADING IS COMPLETED. TEMPORARY AND PERMANENT VEGETATIVE PRACTICE SHALL BE AS FOLLOWS:

SEED SPECIES	APPLICATION/ACRE
(PERMANENT) ST. AUGUSTINE GRASS	10 LBS/ACRE
(TEMPORARY) BAHA	10 LBS/ACRE

FERTILIZER SHALL BE APPLIED AT A RATE OF 1000 LBS/ACRE. LIME SHALL BE APPLIED AT A RATE OF 1500 LBS/ACRE. MULCHING SHALL BE SPREAD AT A RATE OF 15 TONS/ACRE.

EROSION AND SEDIMENT CONTROL PROGRAM:
1. EROSION AND SEDIMENTATION CONTROLS MUST BE IN PLACE AT ALL TIMES DURING CONSTRUCTION, WHETHER TEMPORARY OR PERMANENT AND SHALL NOT BE REMOVED UNTIL THE PROJECT HAS BEEN COMPLETED.
2. SEDIMENT CONTROL WILL BE ACCOMPLISHED BY THE INSTALLATION OF SEDIMENT BARRIERS IN AREAS OF CONCENTRATED WATER FLOW. VEGETATIVE COVER WILL BE ESTABLISHED ON ALL DISTURBED AREAS.
3. CONTRACTOR SHALL BE REQUIRED TO ADHERE TO THE CITY OF COCONUT CREEK'S ADOPTED EROSION AND SEDIMENTATION STANDARDS.

MAINTENANCE PROGRAM:
EROSION CONTROL MEASURES WILL BE MAINTAINED AT ALL TIMES. IF FULL IMPLEMENTATION OF APPROVED PLAN DOES NOT PROVIDE FOR EFFECTIVE EROSION CONTROL, ADDITIONAL EROSION & SEDIMENT CONTROL MEASURES SHALL BE IMPLEMENTED TO CONTROL OR TREAT THE SEDIMENT SOURCE. SEDIMENT CONTROL STRUCTURES WILL BE CLEANED AND THE SEDIMENT WILL BE SPREAD ON SITE. SEDIMENT AND EROSION CONTROL MEASURES WILL REMAIN IN PLACE AND BE MAINTAINED UNTIL THE DISTURBED AREAS ARE STABILIZED.

NOTES:
1. ALL ELEVATIONS REFER TO N.G.V.D. (NATIONAL GEODETIC VERTICAL DATUM) IN FEET.
2. ALL AREAS CLEARED AND GRUBBED BEYOND THE EDGE OF PAVED AREAS WILL BE GRASSED AND MULCHED IMMEDIATELY AFTER GRADING IS COMPLETED. THESE AREAS WILL BE REGRASSED AFTER THE CONSTRUCTION OF ALL UTILITIES ARE COMPLETED.
3. ALL EROSION AND SEDIMENT CONTROL DEVICES SHALL BE CONSTRUCTED SIMULTANEOUSLY WITH THE DISTURBANCE OF THE LAND AND SHALL REMAIN FUNCTIONAL UNTIL THE CONTRIBUTING DISTURBED AREAS ARE STABILIZED.
4. ALL EROSION AND SEDIMENT CONTROL DEVICES SHALL BE BUILT IN ACCORDANCE WITH THE APPROPRIATED CODES AND ORDINANCES.
5. ALL EROSION AND SEDIMENT DEVICES SHOWN SHALL BE SEDIMENT BARRIERS (S.D.) CONSTRUCTED OF AN APPROVED MATERIAL.
6. EGRESS FROM SITE MUST BE CONTROLLED SUCH THAT VEHICLES LEAVING SITE MUST TRAVERSE CONSTRUCTION EXITS TO REMOVE MUD FROM TIRES.
7. CONTRACTOR SHALL BE RESPONSIBLE FOR ALL UNDERGROUND UTILITIES AND SHALL COORDINATE ALL WORK WITH THE OWNER AND UTILITY COMPANIES.
8. ALL EROSION CONTROL MEASURES SHALL BE MAINTAINED DAILY AND REPAIRED / CLEANED AS NECESSARY. ADDITIONAL EROSION AND SEDIMENTATION CONTROL MEASURES WILL BE INSTALLED AS DEEMED NECESSARY BY ON-SITE INSPECTION.

- LEGEND:**
- (Sdt) SILT FENCE
 - (D8t) DISTURBED AREA STABILIZATION WITH TEMPORARY 60D AND FILTER FABRIC
 - (D8c) DISTURBED AREA STABILIZATION WITH PERMANENT 60D
 - (Co) CONSTRUCTION ENTRANCE / EXIT

CAMERO + ASSOCIATES, INC.
CIVIL ENGINEERS
CAMERO + ASSOCIATES, INC.
JORGE L. CAMERO, P.E.
1400 SW 50TH TERR. SUITE 204
(305) 625-1602
jorge@camerоengineers.com

PLANNERS
EB NO. 0004215
FLA. REG. NO. 32545
MIAMI, FL 33185
SUITE 204
FAX (305) 625-9888
OUR JOB # 13-110

DRAWING ISSUE DATES:

EROSION + SEDIMENTATION CONTROL PLAN

SHEET
C-1A
PROJECT 130218
DATE 03-26-13
PERMIT NO.