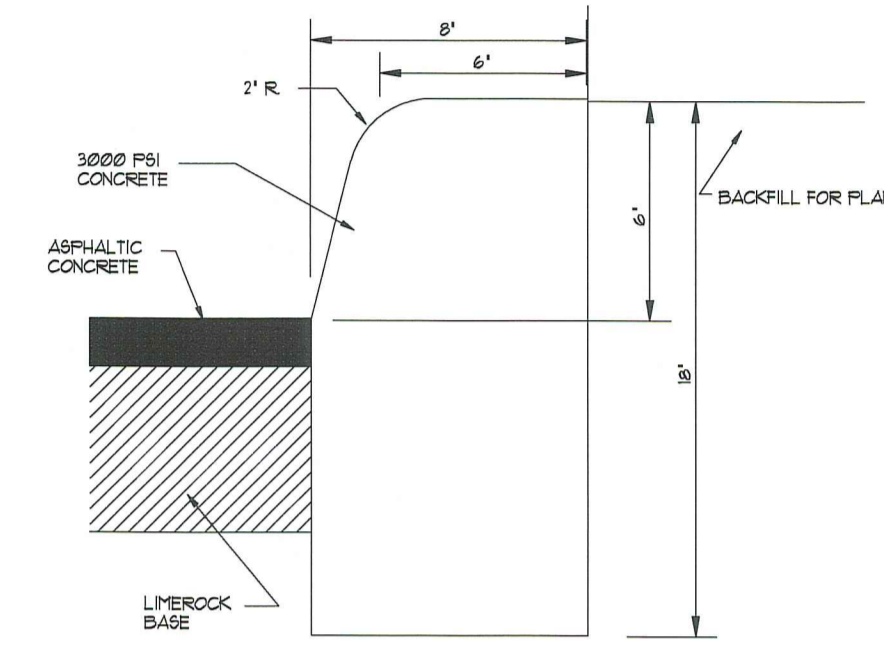
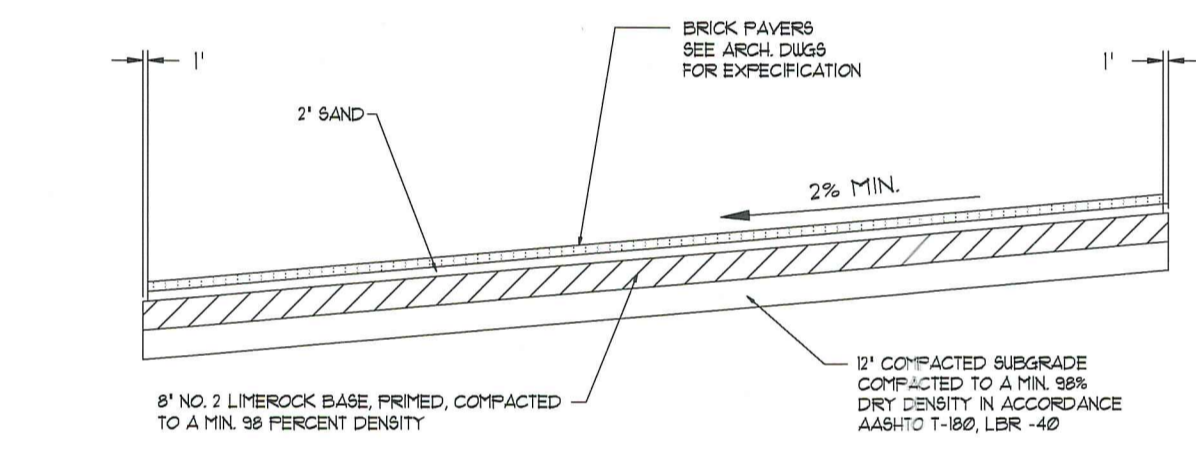


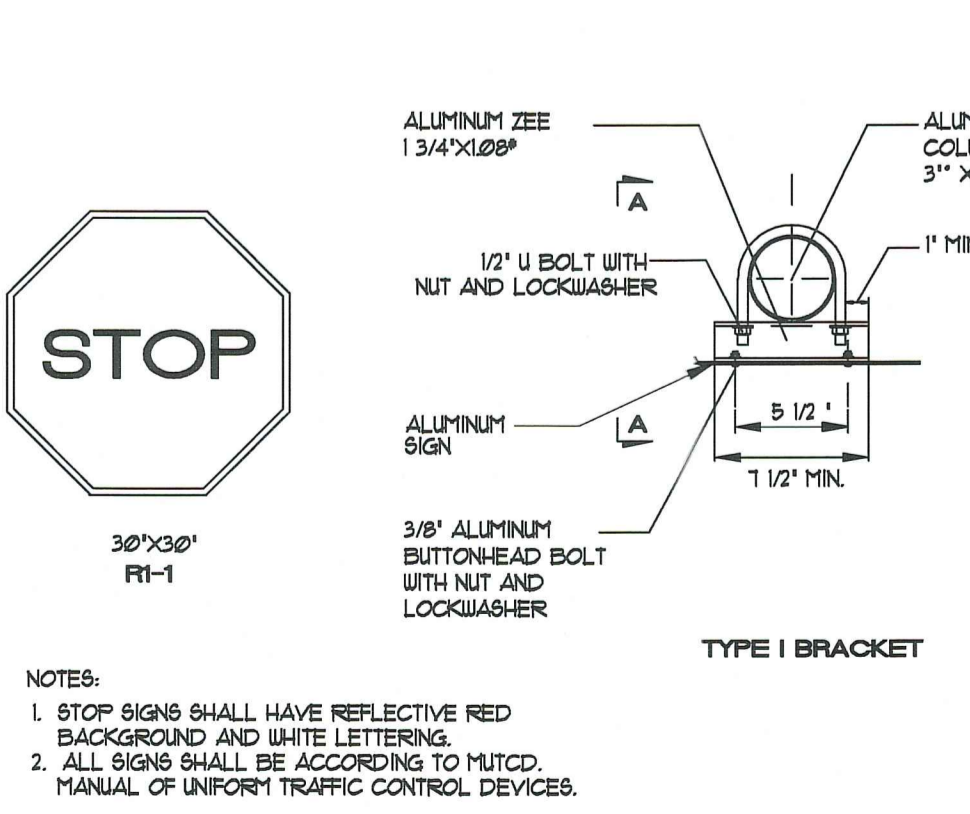
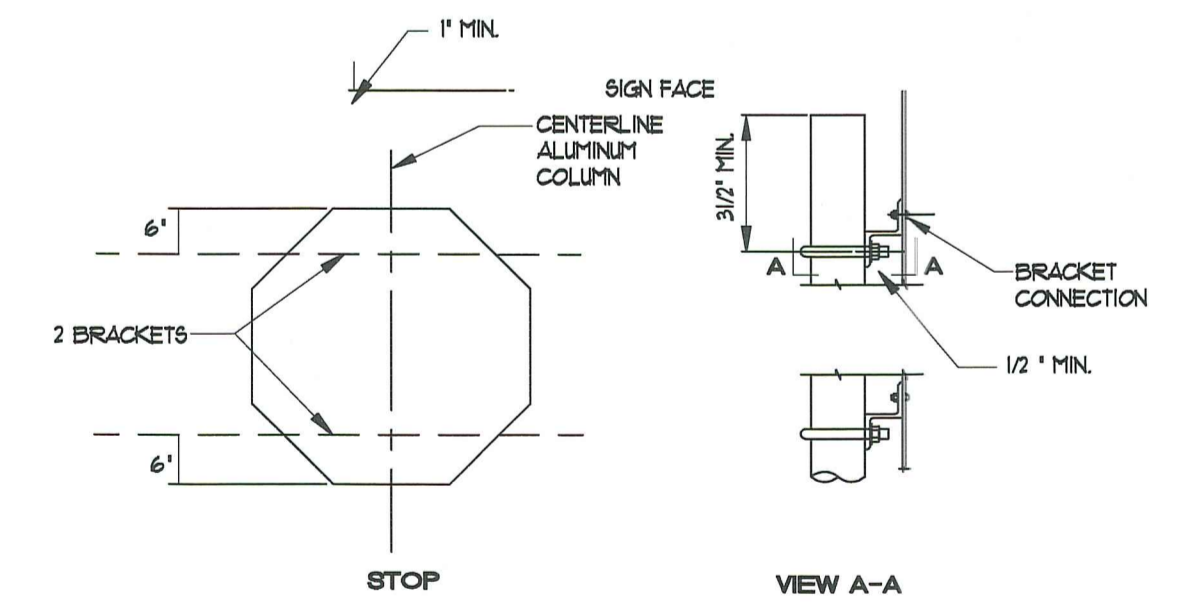
PAVEMENT SECTION



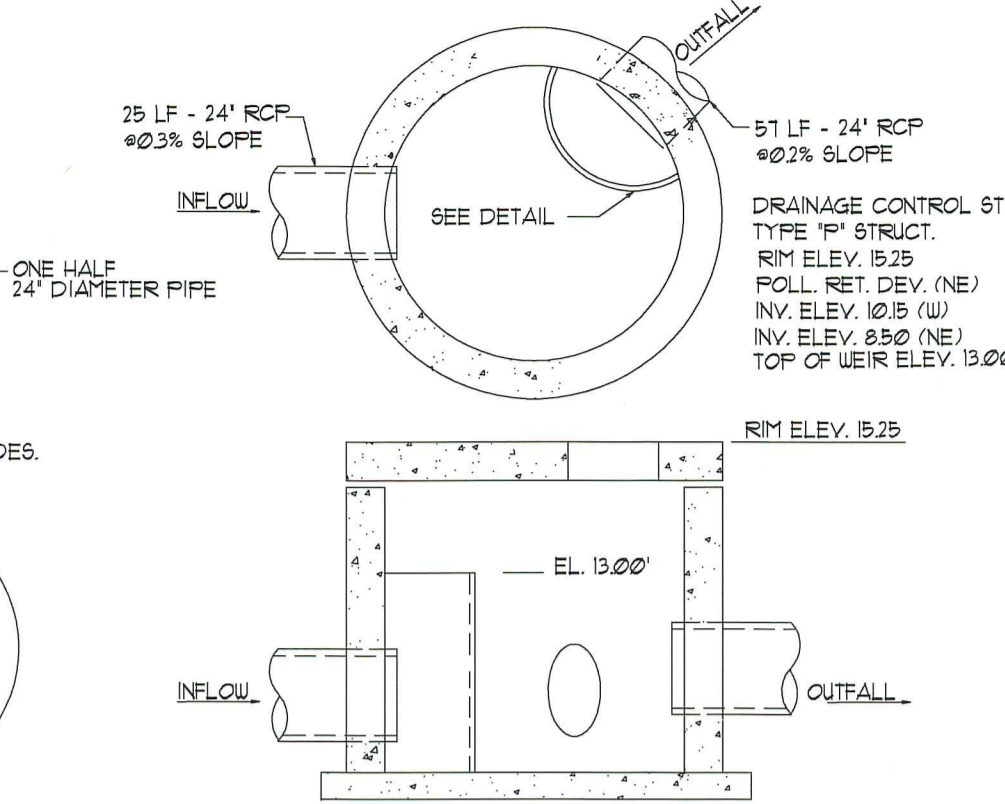
TYPICAL TYPE "D" CURBING



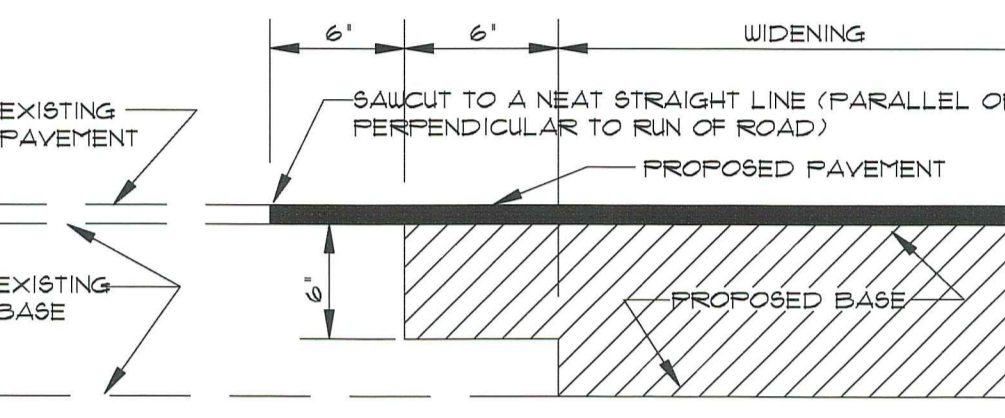
PAVERS SECTION



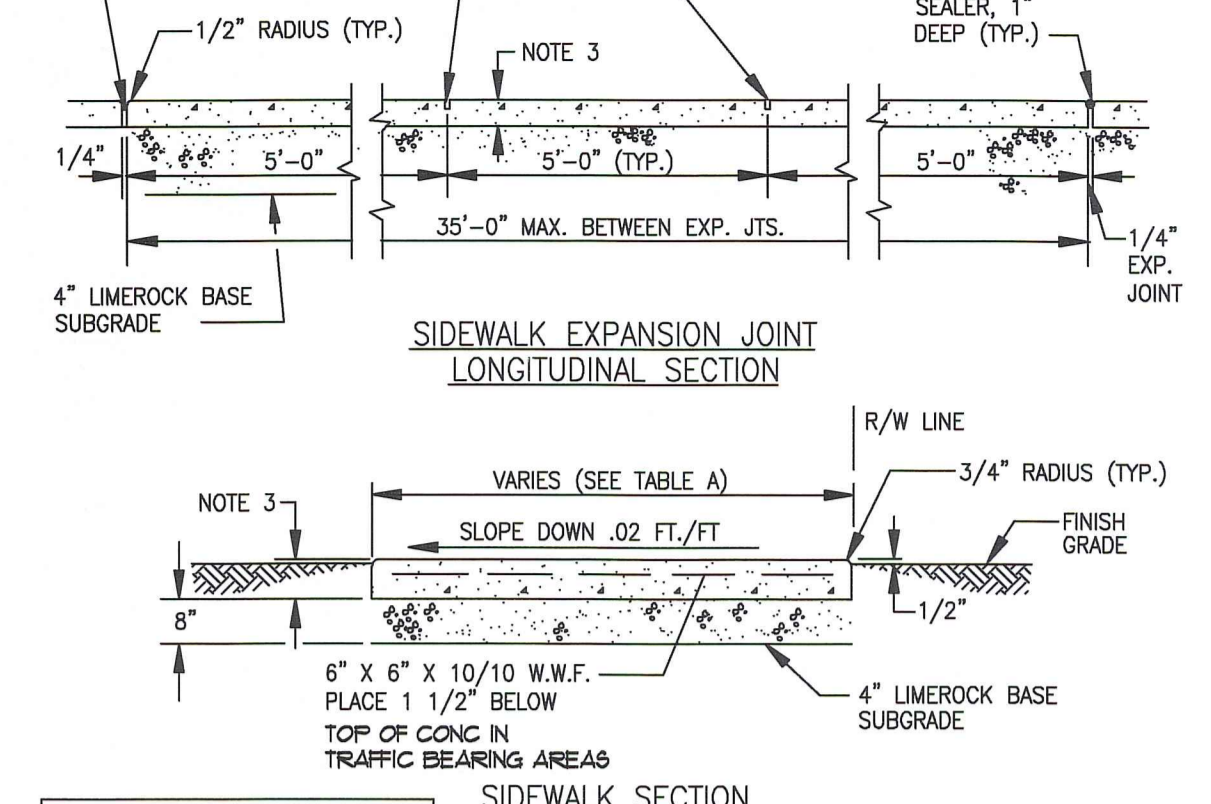
STOP SIGN AND TYPICAL SIGN BRACKET DETAIL



DRAINAGE CONTROL STRUCTURE NO. 1



SAWCUT DETAIL



SIDEWALK EXPANSION JOINT LONGITUDINAL SECTION

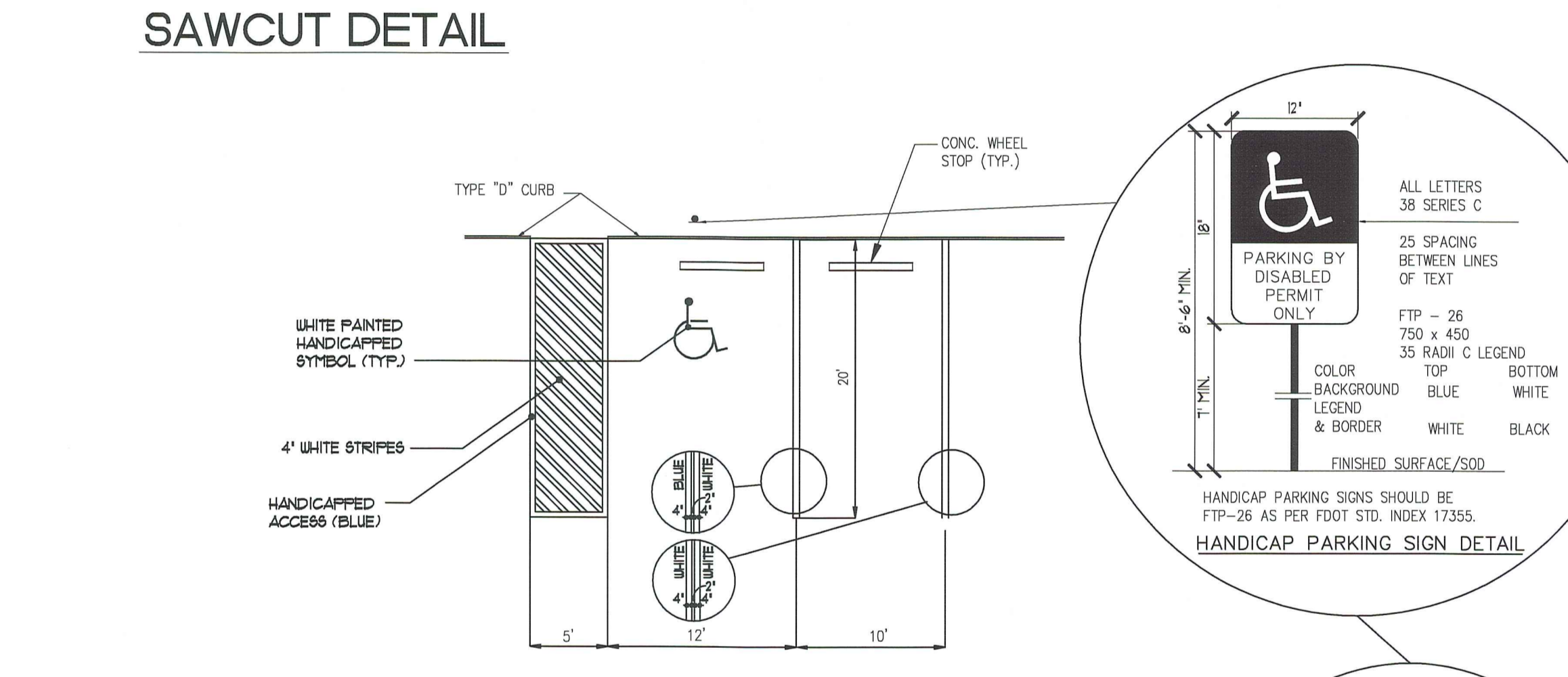
TABLE A - SIDEWALK WIDTH

WIDTH	ROADWAY APPLICATION
5'	LOCAL STREET ACCESSIBLE
5'	TWO-LANE COLLECTOR
5'	FOUR-LANE COLLECTOR
5'	ARTERIAL ROADWAYS

SIDEWALK JOINTS

TYPE	LOCATION
'A'	P.C. PT. OF CURVES
'B'	5'-0" CENTER TO CENTER ON SIDEWALKS

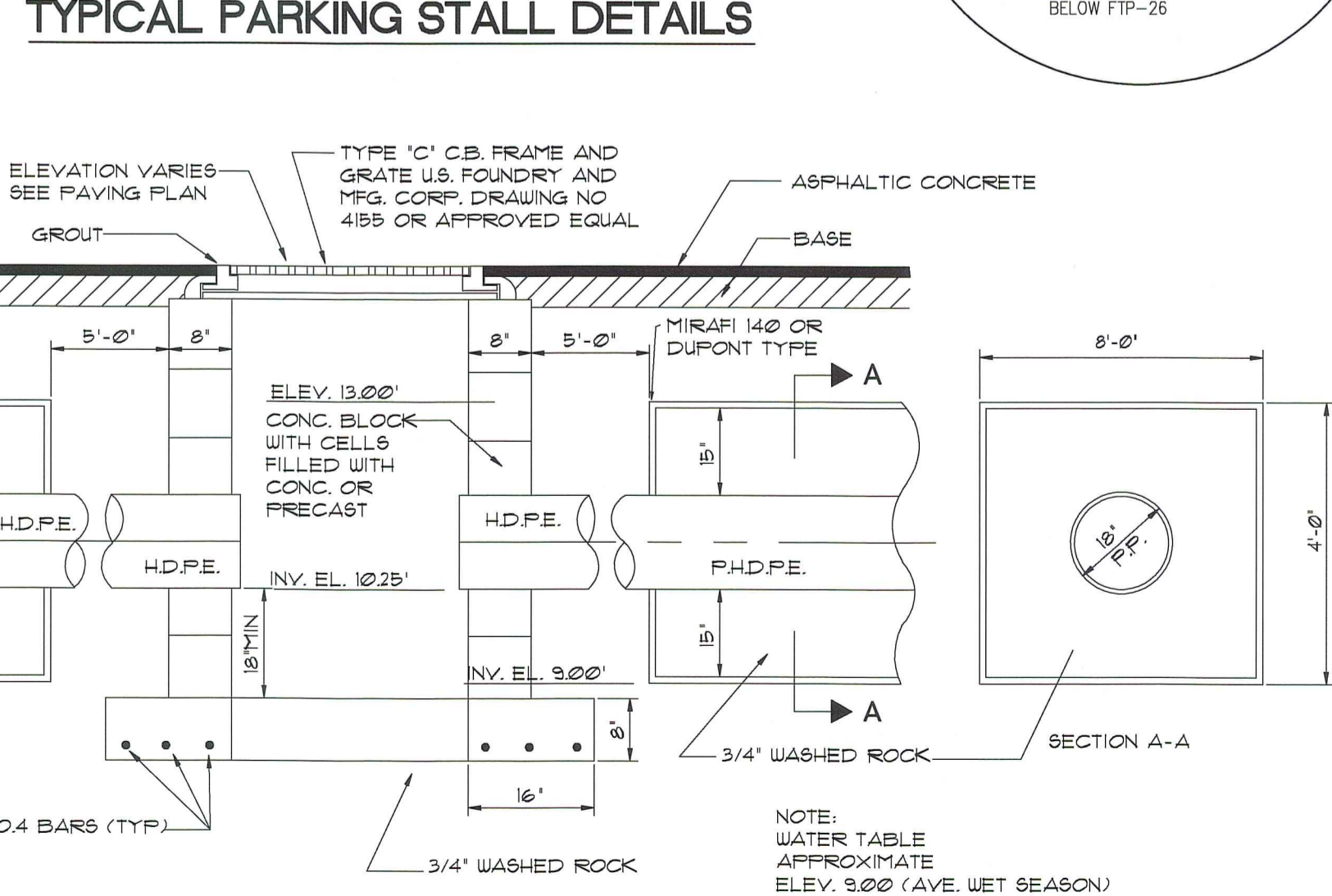
TYPICAL SIDEWALK DETAILS



TYPICAL PARKING STALL DETAILS

NOTE: SIGNING AND MARKING FOR HANDICAP PARKING STALLS MUST BE IN ACCORDANCE WITH FOOT STANDARD INDEX 17346. ALL PAINT SHALL BE REFLECTORIZED PAINT.

- HANDICAPPED SIGN WILL BE OF F.D.O.T. (BLUE) COLOR.
- PAVEMENT BORDER LINES (ONE ON EACH SIDE) OF THE HANDICAP SPACE WILL BE OF A BLUE COLOR OF A QUALITY EQUIVALENT TO SUPER STRIPE TRAFFIC PAINT SOLD BY FOX VALLEY SYSTEMS, INC. OF CARY, ILLINOIS, PHONE 1-800-323-4770. SHALL BE STRIPED ON THE WEARING SURFACE OF EACH SPACE DESIGNED FOR THE HANDICAP PARKING SPACE. ORDINANCE NO. 1550.
- ALL LETTERS IN MIDDLE PORTION OF SIGN ARE 1.5" SERIES AT 1.5" SPACING.
- ALL LETTERS IN BOTTOM PORTION OF SIGN ARE 1" SERIES AT 1" SPACING.
- MINIMUM FINE SHALL BE \$250.00 PER ORDINANCE 2149.



CATCH BASIN W/DRAINFIELD

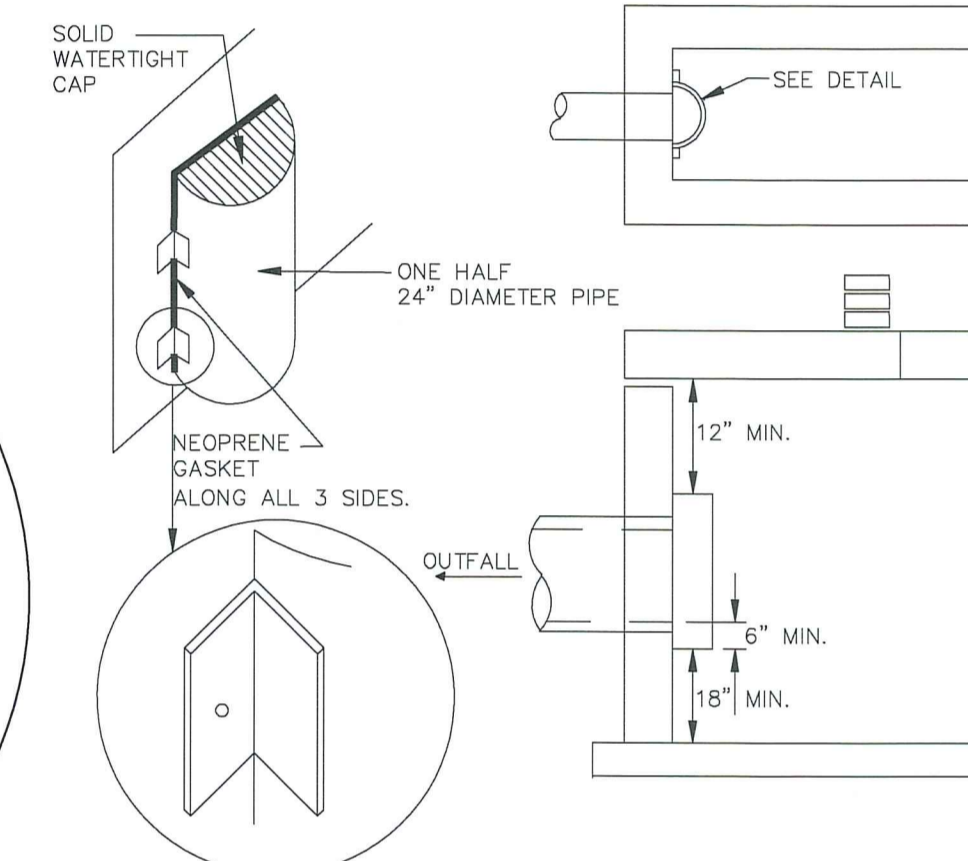
PAVING, MARKING + SIGNING NOTES:

- ALL DESIGN, CONSTRUCTION, STUDIES, ETC. SHALL CONFORM TO THE APPLICABLE SECTIONS OF THE FOLLOWING:
 - UNITED STATES DEPARTMENT OF TRANSPORTATION: 'MANUAL ON UNIFORM TRAFFIC CONTROL DEVICES', (MUTCD)
 - STATE OF FLORIDA DEPARTMENT OF TRANSPORTATION:
 - F.D.O.T. 'ROADWAY & TRAFFIC DESIGN STANDARDS' (1994)
 - 'STANDARD SPECIFICATIONS' (199) OR LATEST REVISION
- ALL DESIGN FOR CONSTRUCTION SHALL BE CERTIFIED BY A PROFESSIONAL ENGINEER OR LAND SURVEYOR REGISTERED IN THE STATE OF FLORIDA, THAT THEY MEET THE STANDARDS INCLUDED IN B.I. ABOVE.
- ALL PAVEMENT MARKINGS SHALL BE THERMOPLASTIC WITH RAISED PAVEMENT MARKERS.
- PAVEMENT MARKINGS SHALL CONFORM TO D.O.T. INDEX NO. 17346.
- SIX INCH (6") EDGE LINES SHALL EXTEND 6' TO 10' BEYOND P.C.'S AT MEDIANS AND AT P.C.'S OF CURB RETURNS AT INTERSECTIONS.
- PAVEMENT MARKINGS SHALL BE BID AS A LUMP ITEM.

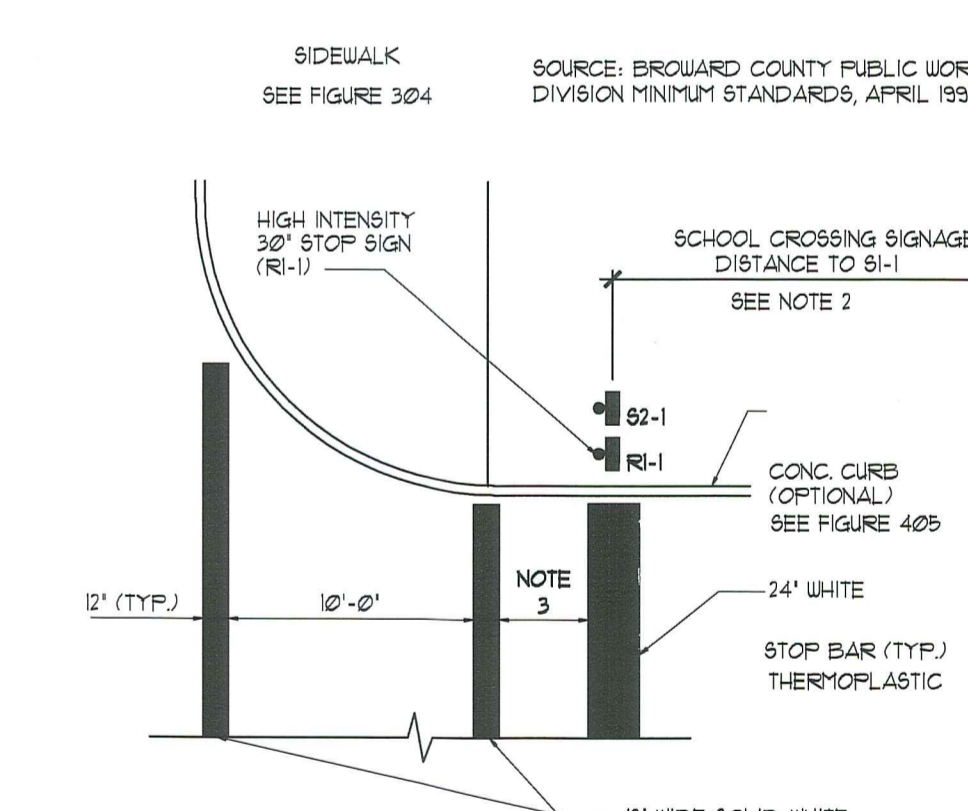
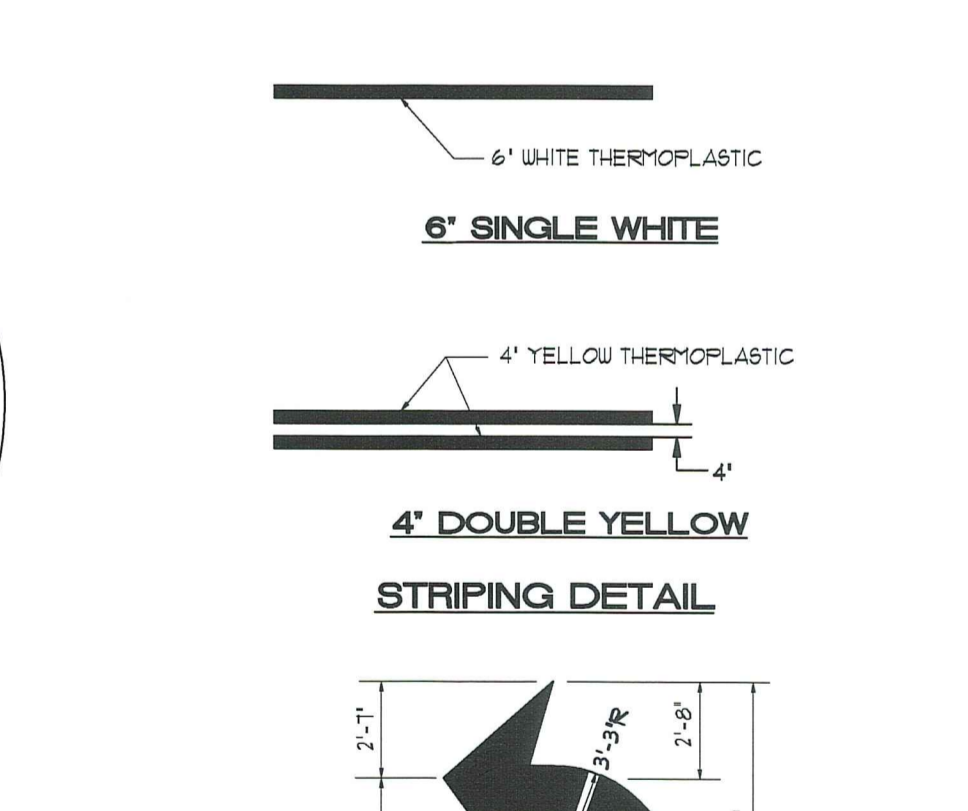
- NOTES:
- ALL MATERIALS AND CONSTRUCTION WITHIN THE D.O.T. R/W SHALL CONFORM TO THE D.O.T. 'ROADWAY AND TRAFFIC DESIGN STANDARDS' (LATEST EDITION) AND 'STANDARD SPECIFICATIONS' (LATEST EDITION)
 - THE CONTRACTOR MUST CALL B.G.T.E.D. AT 484-3620 AT LEAST 48 HOURS BEFORE ANY EXCAVATION WITHIN THE D.O.T. R/W TO DETERMINE THE LOCATION OF THE EXISTING TRAFFIC SIGNAL INTERCONNECT CABLE.
 - AT THE END OF EACH WORK PERIOD, ANY DROP-OFF IN THE AREA ADJACENT TO THE TRAVEL WAY OF THE STATE ROAD SHALL BE BACKFILL IN ACCORDANCE WITH STANDARD INDEX 600 OR SHALL BE OTHERWISE PROTECTED WITH TEMPORARY BARRIER WALL AT THE CONTRACTOR'S EXPENSE.
 - THE CONSULTANT'S ENGINEER RESPONSIBLE FOR CONSTRUCTION INSPECTION SHALL INSURE THAT THE MOT FOR THE PROJECT CONFORMS WITH THE STANDARD INDEX SERIES 600, APPLICABLE INDEX FOR WORK BEING PERFORMED.

PAVING + DRAINAGE NOTES:

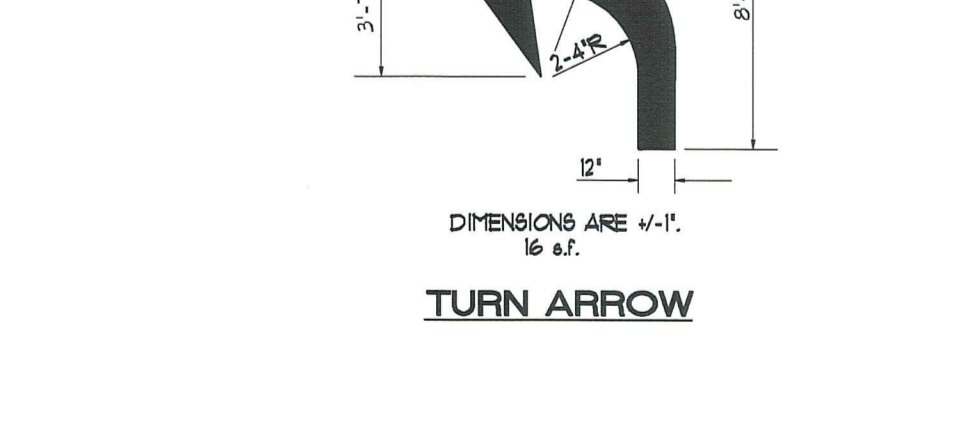
- ALL MUCK UNDER THE PROPOSED DRIVEWAY AND PARKING AREAS SHALL BE REMOVED AND REPLACED WITH COMPACT ACCEPTABLE FILL IN ONE-FOOT LIFTS TO 98 PERCENT DENSITY.
- ALL LABOR, MATERIALS AND METHODS OF INSTALLATION SHALL BE IN STRICT ACCORDANCE WITH THE MINIMUM ENGINEERING AND CONSTRUCTION STANDARDS ADOPTED BY THE CITY OF COCONUT CREEK.
- ALL UNDERGROUND UTILITIES AND DRAINAGE IS TO BE INSTALLED BEFORE SUBGRADE IS CONSTRUCTED.
- ALL ELEVATIONS REFER TO N.G.V.D. OF 1929.
- CONTRACTOR SHALL TAKE ALL NECESSARY PRECAUTIONS TO SAFEGUARD ALL EXISTING STRUCTURES AND UTILITIES. ANY DAMAGE DONE TO EXISTING UTILITIES SHALL BE REPAIRED BY THE CONTRACTOR AT NO EXPENSE TO THE SUBJECT UTILITY. CALL UN.C.L.E. (1-800-432-4770) 48 HOURS BEFORE DIGGING.
- ALL PAVEMENT SHALL HAVE A MINIMUM COMPRESSIVE STRENGTH OF 3000 P.S.I. AT 28 DAYS.
- CONTRACTOR SHALL VERIFY LOCATION OF EXISTING UNDERGROUND UTILITIES AND INFORM ENGINEER OF ANY DISCREPANCIES.
- CONTRACTOR SHALL NOTIFY THE CITY OF COCONUT CREEK ENGINEERING DEPARTMENT AT LEAST 48 HOURS PRIOR TO COMMENCING CONSTRUCTION AND SETTING A FIRE-CONSTRUCTION MEETING.
- AS-BUILT DRAWINGS THAT SHOW TOP OF ROCK ELEVATIONS AND COMPLETED DRAINAGE INSTALLATION SHALL BE SUPPLIED TO THE CITY ENGINEER FOR APPROVAL PRIOR TO INSTALLATION OF LEAVING SURFACE. AS-BUILT DRAWINGS SHALL BE REPAIRED BY A PROFESSIONAL LAND SURVEYOR REGISTERED IN THE STATE OF FLORIDA.
- REFER TO ARCHITECTURAL DRAWINGS FOR SPECIFICATIONS OF FILL MATERIAL UNDERNEATH BUILDING FADS.
- STABILIZED SUBGRADE SHALL HAVE A LOAD BEARING RATIO (LBR) OF 40 AND SHALL BE COMPACTED TO 98% OF MAXIMUM DENSITY AS DETERMINED BY AASHTO T-190.
- MIAMI LIMEROCK BASE COURSE SHALL CONFORM TO HAVE MINIMUM 10% OF CARBONATES AND LIGHT LIMIT 35, PLASTICITY 6, MINIMUM LBR OF 100 OR ACCEPTABLE F.D.O.T. PRODUCT APPROVAL.
- ASPHALTIC CONCRETE SURFACE COURSE TYPE 9-3 SHALL CONFORM TO THE REQUIREMENTS OF SECTIONS 332-1 THROUGH 332-6 OF FLORIDA D.O.T. STANDARD SPECIFICATIONS. TO BE INSTALLED IN TWO LIFTS.
- PRIME COAT AND TACK COAT OF BASE COURSES SHALL CONFORM TO THE REQUIREMENTS OF SECTIONS 300-1 THROUGH 300-1 OF FLORIDA D.O.T. STANDARD SPECIFICATIONS. PRIME COAT SHALL BE APPLIED AT A RATE OF 0.25 GALLONS PER SQUARE YARD UNLESS A VARIATION RATE IS APPROVED BY THE ENGINEER.
- PRECAST CONCRETE MANHOLES AND CATCH BASINS SHALL MEET THE REQUIREMENTS OF A.S.T.M. SPECS C-478 AND 64T.
- CONCRETE FOR PRECAST MANHOLES AND CATCH BASINS SHALL HAVE A MINIMUM COMPRESSIVE STRENGTH OF 3000 PSI AT 28 DAYS.
- REINFORCING STEEL FOR MANHOLES AND CATCH BASINS SHALL CONFORM TO A.S.T.M. SPECIFICATIONS A-615 AND A-305, LATEST REVISION.
- ALL RE-BAR SPLICES IN CONCRETE STRUCTURES SHALL HAVE A MINIMUM LAP OF 24 BARR DIAMETER.
- ALL JOINTS IN CONCRETE STRUCTURES SHALL BE FINISHED WATERTIGHT.
- ALL SPACES AROUND PIPING ENTERING OR LEAVING MANHOLES AND CATCH BASINS SHALL BE COMPLETELY FILLED WITH 2:1 CEMENT MORTAR.
- REINFORCED CONCRETE PIPE (RCP) SHALL CONFORM TO THE REQUIREMENTS OF ASTM SPECIFICATION C-116, FOR CLASS III, WALL THICKNESS 'B' REINFORCED CONCRETE PIPE AND AS MODIFIED BY SECTION 941 OF FLORIDA D.O.T. STANDARD SPECIFICATION.
- TYPE 'F' CURB SHALL BE CONSTRUCTED OVER A 4-INCH LIMEROCK BASE PAD (98% DENSITY MINIMUM).
- REMOVE ALL ORGANICS AND DELETERIOUS MATERIAL.



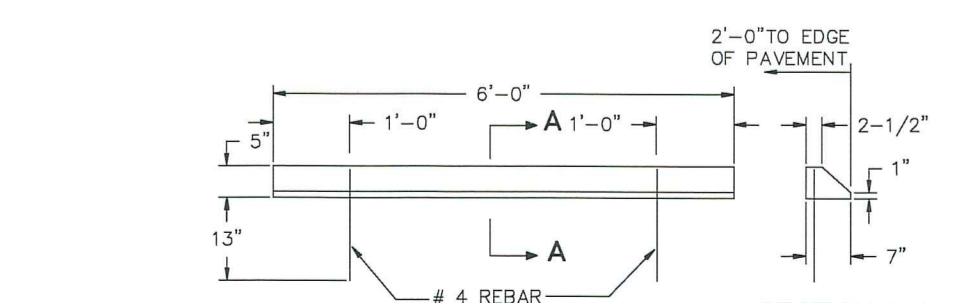
POLLUTION RETARDANT



STOP SIGN, STOP BAR, AND SCHOOL CROSSING DETAIL



TURN ARROW



CONCRETE WHEEL STOP DETAIL

- GENERAL NOTES:**
- ALL PAVEMENT MARKINGS AND SIGNING SHALL BE IN ACCORDANCE WITH THE 'MANUAL ON UNIFORM TRAFFIC CONTROL DEVICES FOR STREET AND HIGHWAYS' UNLESS SPECIFIED OTHERWISE.
 - SCHOOL CROSSING SIGNAGE S-1 TO BE PLACED AT THE FOLLOWING DISTANCE FROM S-1: ON APPROACH TO THE CROSSWALK: 25-35 MPH + 200', 35-45 MPH + 350', 45-55 MPH + 500'
 - 4-FOOT DISTANCE ACROSS TWO-LANE RESIDENTIAL STREETS, 40-FOOT DISTANCE FOR FOUR TO SIX-LANE HIGHWAYS.

PAVEMENT MARKING DETAILS



PAVEMENT MARKING DETAILS

CAMERO + ASSOCIATES, INC.
 CIVIL ENGINEERS
 CAMERO & ASSOCIATES, INC.
 JORGE L. CAMERO, P.E.
 14000 S.W. 52ND TERR. SUITE 204
 (305) 665-1602
 jorge@cameroengineers.com

PLANNERS
 EB NO. 0004219
 FLA. REG. NO. 32545
 MIAMI, FL 33155
 FAX (305) 665-8488
 OUR JOB# 13-102

CONSULTANT
 STATE OF FLORIDA
 REGISTERED ARCHITECT
 Gregory B. Molins
 FL REG. # AR 63964
 DATE: 03-26-13

GBM
 ARCHITECTURE PA
 ARCHITECTURE
 MASTER PLANNING
 ARCH 000322

5001 S.W. 52ND AVENUE, UNIT # 8
 FORT LAUDERDALE, FLORIDA 33315
 T: 954.713.6101
 F: 954.812.6680
 E: gbm@gbmarchitecture.com
 WEB: WWW.GBMARCHITECTURE.COM

DRG SUBMITTAL FOR
COCONUT CREEK MOB
4890 ACCESS ROAD, LLC
 4890 ACCESS RD. COCONUT CREEK, FLORIDA 33073

DRAWING ISSUE DATES

NO.	DATE	DESCRIPTION

PAVING + DRAINAGE DETAILS

SHEET
C-3
 PROJECT 130218
 DATE 03-26-13
 PERMIT NO.