

EXTERIOR

SITE PLAN

North

E02 - ILLUMINATED WALL SIGN - North Elevation

E03 - ILLUMINATED WALL SIGN - East Elevation

E05 - DIRECTIONAL SIGNAGE

E06 - DIRECTIONAL SIGNAGE

E07 - DIRECTIONAL SIGNAGE

E09 - TELLER LANE INDICATOR

E10 - ATM LANE INDICATOR

E11 - CLEARANCE SIGNAGE

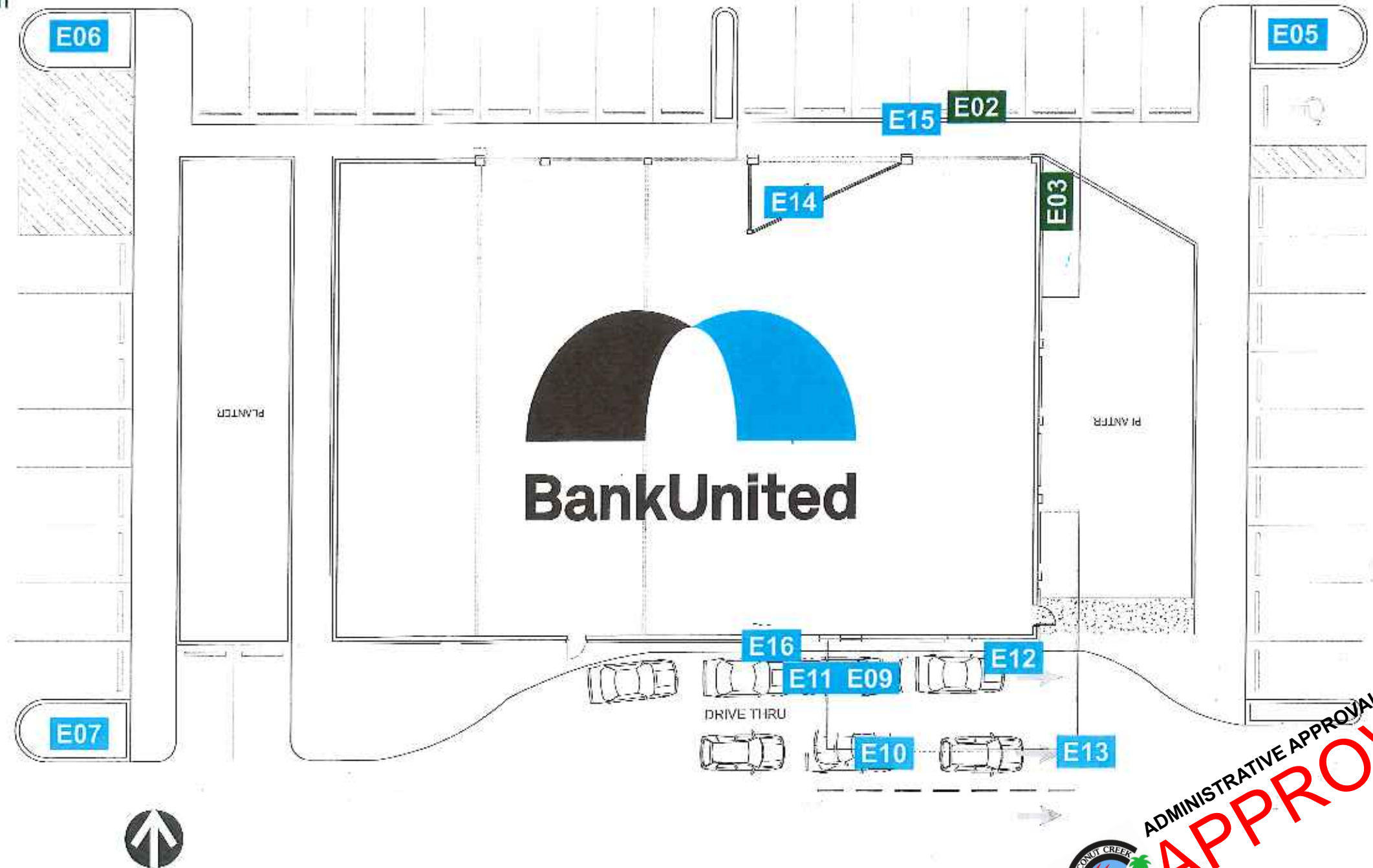
E12 - DO NOT ENTER

E13 - DO NOT ENTER

E14 - HOURS VINYL

E15 - HC PARKING

E16 - ATM



INTERIOR

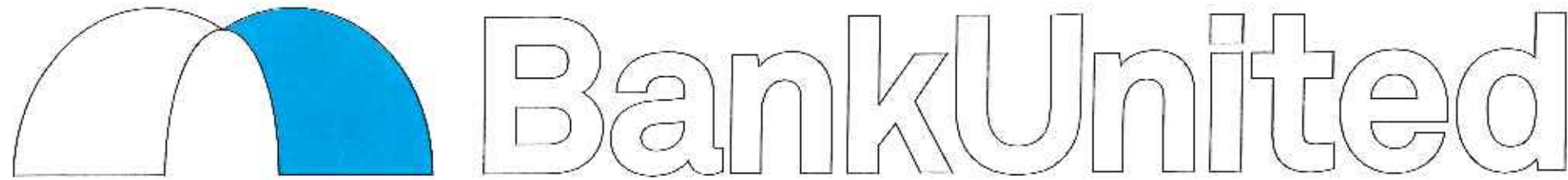
I01 - SAFETY VINYL

I02 - STAINLESS STEEL LETTERS

ADMINISTRATIVE APPROVAL 10-13-14
APPROVED

Any party accepting this document does so in confidence and agrees that it should not be duplicated, in whole or in part, nor disclose to others, without the written consent of the client. Reference copy list for copy/graphic specific to each sign location. Contractor shall verify all conditions on site and notify any variation from what is shown on the drawings before proceeding with fabrication.

Colors shown on drawing are for presentation purposes.
All colors must be confirmed and initiated by project manager before painting.



VINYL COLOR PALLET	
	PROCESS BLUE 3M-3630-337
	TRANSLUCENT WHITE 3M 3630-70
	BLACK

Face: White/Blue
Returns: Cassia Black
Trim cap: Cassia Black
Background: r/a
LEDs: White

Letter Height: 24" 18"
Letter depth: 4"
Letter Style: Logotype
Allowed Sq. Ft.: _____
Proposed Sq. ft.: 43.3

INDIVIDUALLY ILLUMINATED **FRONT LIT BACK LIT** CHANNEL LETTERS

E02



Square footage: 43.3

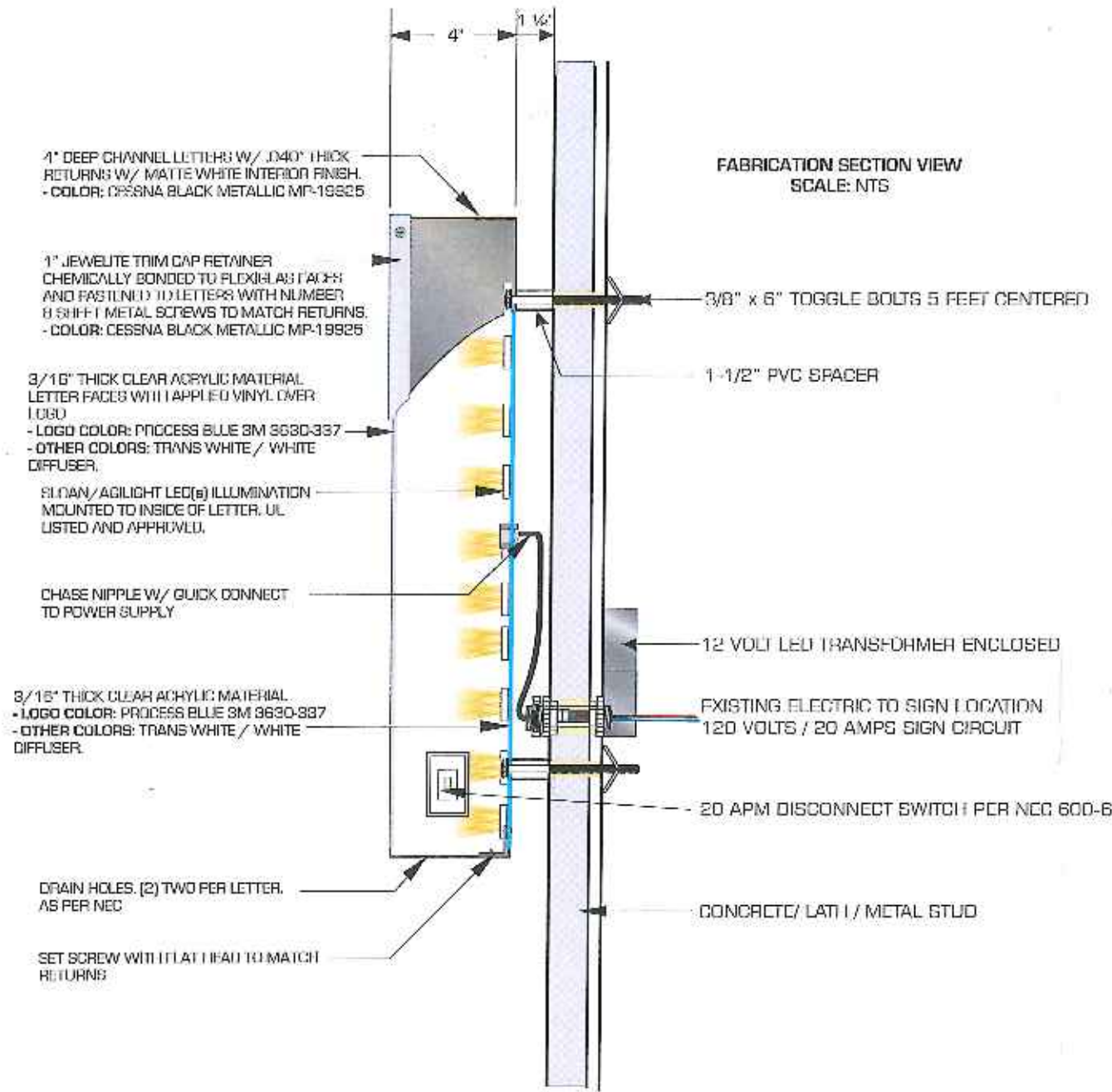
Scale: 1/2" = 1'-0"



Scale: 3/32" = 1'-0"

NORTH ELEVATION





Broward & North Wall Sign

1. Design, fabrication and construction to the following codes and specifications:

- A. The Florida Building Code 2010
- B. American Welding Society AWS D1.2 2003
- C. Specifications for aluminum structures by the Aluminum Association (Current Edition)

2. Structural requirements:

- A. All bolted connections shall be made with ASTM A307 bolt or equal
- B. All anchors bolts shall be ASTM A307 or equal (flat washers at nut)
- C. All welds shall be made with E70XX electrodes or equal
- D. The electrical installation shall be in compliance with the National Electric Code (NEC 2008) grounding and bonding as per NEC 250 600-7
- E. H.V.H.Z., section 1620 F.B.C., ASCE 7-10 170 MPH, exposure C, Category 2, Chapter 16



ELECTRICAL SPECIFICATIONS:
All electrical components are UL listed
Storage Grounding and Bonding As Per NEC 250
Primary wiring #12 THHN As Per NEC 600-6
Minimum 20 Amp. Disconnect Switch Per NEC 240
Minimum 1/2" Conduit, Time Clock or photo cell per NEC
All Ballast Electrical to have In-Line Fuses

QTY	SOURCE	SIZE	AMPS	TOTAL
4	LED	12V	1.2	4.8

CIRCUITS REQUIREMENTS



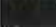
CIRCUITS REQUIRE 1 TOTAL AMPS 4.8
20 AMPS DISCONNECT SWITCHES 1
BREAKER # 8 PANEL B

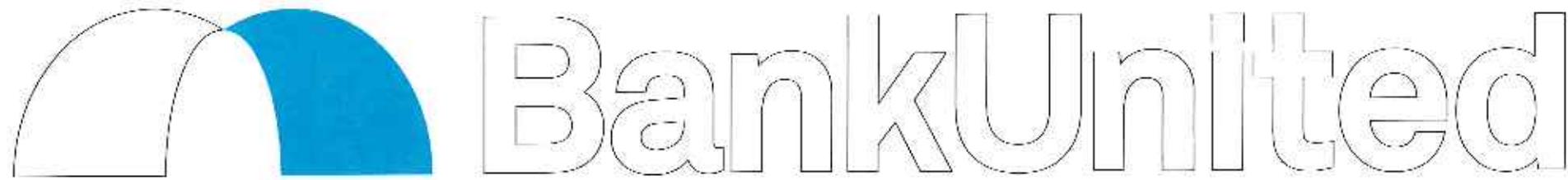


Scale: 1/2" = 1'-0"

ENGINEER TONG LE RE, INC.
Consulting Structural Engineers
5100 W Copans Rd. #710 Margate Fl.
Tong Le President (954)974-6560



VINYL COLOR PALLET	
	PROCESS BLUE 3M-3630-337
	TRANSLUCENT WHITE 3M 3630-20
	BLACK

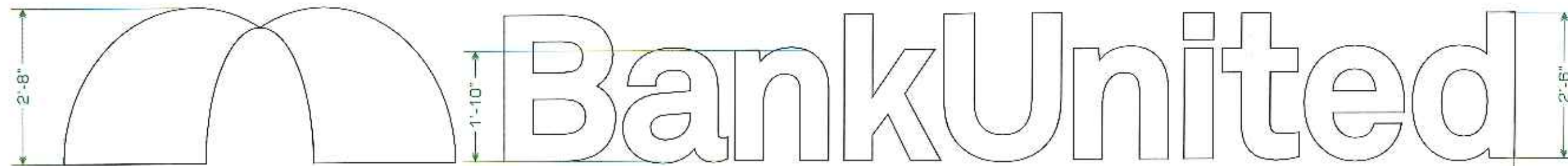


Face: White/Blue
 Returns: Cessna Black
 Trim cap: Cessna Black
 Background: i/a
 LEUs: White

Letter Height: 24" 19"
 Letter depth: 4"
 Letter Style: Logotype
 Allowed Sq. Ft.: _____
 Proposed Sq. ft: 40.7

INDIVIDUALLY ILLUMINATED **FRONT LIT BACK LIT** CHANNEL LETTERS

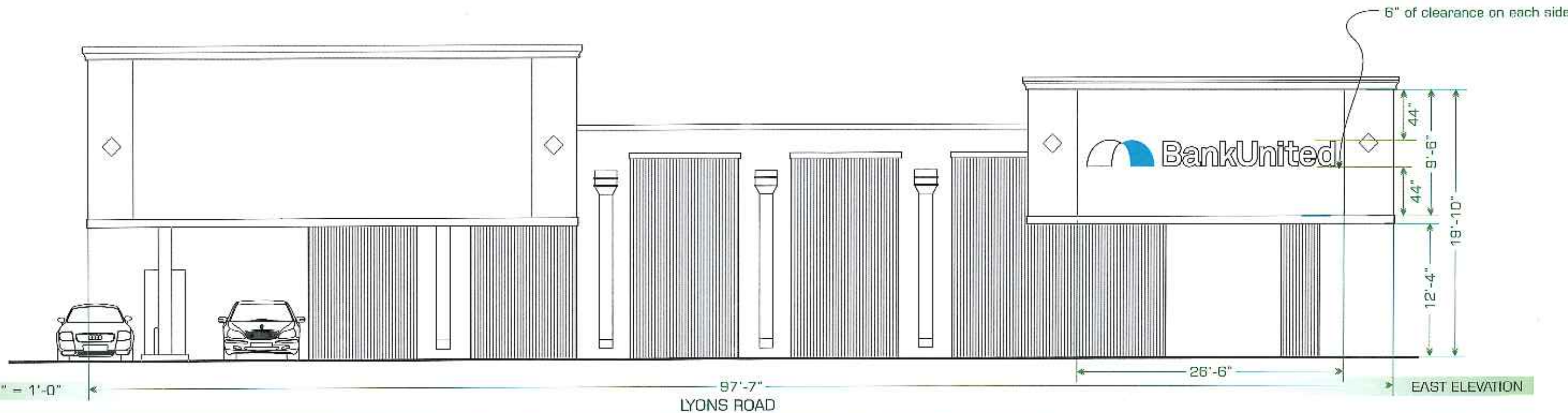
E03



Scale: 1/2" = 1'-0"

24'-7"

Square footage: 85.5



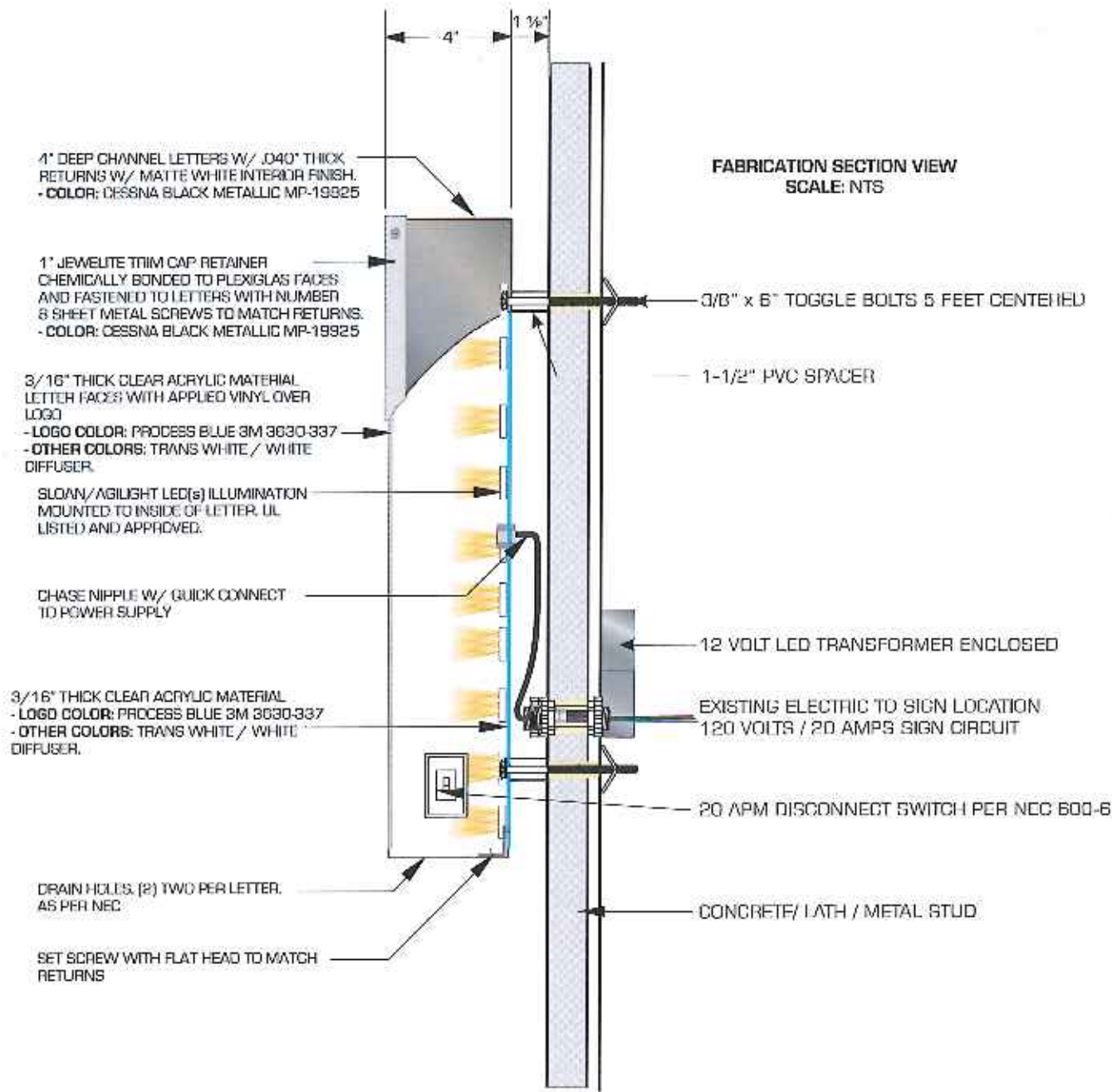
Scale: 1/8" = 1'-0"

97'-7"
LYONS ROAD

26'-6"

EAST ELEVATION





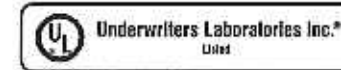
Broward & North Wall Sign

1. Design, fabrication and construction to the following codes and specifications:

- A. The Florida Building Code 2010
- B. American Welding Society AWS D1.2 2003
- C. Specifications for aluminum structures by the Aluminum Association (Current Edition)

2. Structural requirements:

- A. All bolted connections shall be made with ASTM A307 bolt or equal
- B. All anchors bolts shall be ASTM A307 or equal (flat washers at nut)
- C. All welds shall be made with E70XX electrodes or equal
- D. The electrical installation shall be in compliance with the National Electric Code (NEC 2008) grounding and bonding as per NEC 250 600-7
- E. H.V.H.Z., section 1620 F.B.C., ASCE 7-10 170 MPH, exposure C, Category 2, Chapter 16



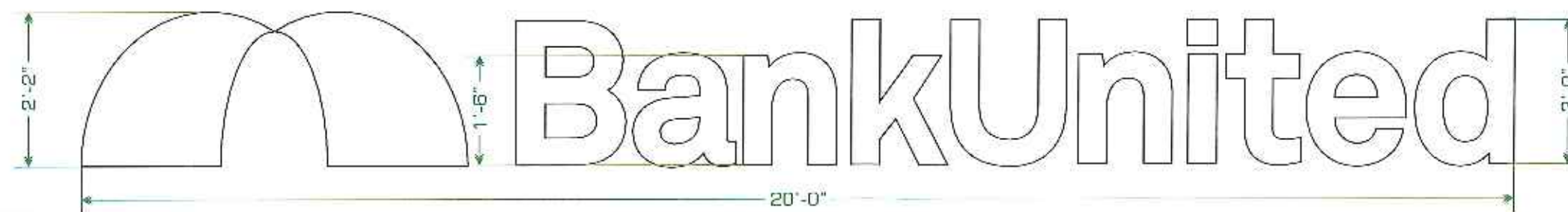
ELECTRICAL SPECIFICATIONS:
All electrical components are UL Listed
Signage Grounding and Bonding As Per NEC 250
Primary wiring #12 THHN As Per NEC 400-6
Minimum 20 Amp, Disconnect Switch Per NEC 240
Minimum 3" Countertop, Time Clock or photo Cell per NEC
All Ballast Electrical to have In-Line Fuses

QTY	SOURCE	SIZE	AMPS	TOTAL
4	LED	12V	1.2	4.8

CIRCUITS REQUIREMENTS

CIRCUITS REQUIRE 1 TOTAL AMPS 4.8
20 AMPS DISCONNECT SWITCHES 1
BREAKER # 8 PANEL B

ENGINEER: TONG LE PE., INC.
Consulting Structural Engineers
5100 W Copans Rd. #710 Margate Fl.
Tong Le President (954)974-6560



Scale: 1/2" = 1'-0"





All letter copy for directional information to be 1" height.

Scale: 1-1/2" = 1'-0"

Square footage: 5.0

VINYL COLOR PALLET	
OPAQUE REFLECTIVE WHITE	
PROCESS BLUE VINYL OVERLAY 3M 3630-37	

PAINT COLOR PALLET	
CLASSIC PEWTER METALLIC PM-18150	

NON ILLUMINATED DOUBLE SIDED **DIRECTIONAL SIGN**

E05

Colors shown on drawing are for presentation purposes.
All colors must be confirmed and initialed by project manager before painting.





Scale: 1-1/2" = 1'-0"

Square footage: 5.0

All letter copy for directional information to be 1" height

VINYL COLOR PALLET
OPAQUE REFLECTIVE WHITE
PROCESS BLUE VINYL OVERLAY 3M 3630-37

PAINT COLOR PALLET
CLASSIC PFWTFR METALLIC PM-18150

NON ILLUMINATED DOUBLE SIDED **DIRECTIONAL SIGN**

E06

Colors shown on drawing are for presentation purposes. All colors must be confirmed and initialed by project manager before painting





Scale: 1-1/2" = 1'-0"

All letter copy for directional information to be 1" height

VINYL COLOR PALLET	
	OPAQUE REFLECTIVE WHITE
	PROCESS BLUE VINYL OVERLAY 3M 3630-37

PAINT COLOR PALLET	
	CLASSIC PEWTER METALLIC PM-18150

NON ILLUMINATED DOUBLE SIDED **DIRECTIONAL SIGN**

E07

Colors shown on drawing are for presentation purposes.
All colors must be confirmed and initialed by project manager before painting



SPECIFICATION INFORMATION

SUBROUND COMPOSITE OF MATTE CLEAR ACRYLIC MATERIAL WITH FORMED TO CREATE BOX SHAPE WITH SECOND SURFACE DIFFUSER AND FIRST SURFACE TRANSLUCENT COLOR VINYL OVERLAY.
-COLOR: PROCESS BLUE 3M 3630-37

ALUMINUM U CHANNEL MATERIAL WELDED TO FORM STURDY FRAME.

1" PUSH THRU ACRYLIC MATERIAL WITH VINYL OVERLAY ON LOGO.
-COLOR: PROCESS BLUE 3M 3630-37

.090" THICK ALUMINUM FACE(S) STENCIL CUT FOR PUSH THRU LETTERS AND DIRECTIONAL VINYL GRAPHIC OVERLAYS TO BE CHEMICALLY BONDED TO ALUMINUM FRAME.
-COLOR: REFLECTIVE WHITE

DIRECTIONAL FACE(S) WILL BE ATTACHED TO LEXAN RETURNS WITH COUNTERSINK SCREWS, AS SHOWN.

DIRECTIONAL BASE COMPOSED OF .090" THICK ALUMINUM MATERIAL WELDED TOGETHER.

FREESTANDING SPECIFICATIONS

1. Design, fabrication and construction to the following codes and specifications:

A. The Florida Building Code 2010
B. American Welding Society AWS D1.2 2003
C. American Concrete Institute building code requirements for structural concrete ACI 318-02

2. Structural Steel requirements:

A. Plates, rolled shapes and bars shall be ASTM A36, or equal
B. Standard pipe shall be ASTM A53, Grade B or equal (Fy=35 KSI)
C. Structural tubing shall be ASTM A500, Grade B or equal (Fy=46 KSI)
D. All bolted connections shall be made with ASTM A307 bolt or equal
E. All anchors bolts shall be ASTM A307 or equal (flat washers at nut)
F. All welds shall be made with E70XX electrodes or equal
G. Structural steel shall be shop prime coated with a rust inhibitive primer

3. All field welds shall comply with AWS code by a AWS certified welder

4. NEC 2008 compliant.

5. All concrete shall have a minimum compressive strength at 28 days/ 3000 PSI

6. Grout shall be non-metallic and non-shrink with a minimum comprehensive strength 5000 PSI at one day

7. All reinforced steel shall have a minimum yield strength of 60,000 PSI and shall conform to ASTM A615
All reinforcement steel shall be installed in accordance with ACI 318-02 with a minimum concrete cover of 3 inches

8. H.V.H.Z., section 1020 E.B.C., ASCE 7-10 170 MPH, exposure C, Category 2, Chapter 16.

9. All ferrous to non ferrous surfaces shall be separated by 3M #350 polyester clear tape or equal

WELD SCHED. 40 PIPE TO STEEL ANGLE SADDLE
A2- See Saddle detail

.125 ROUTED OUT ALUMINUM FACE WITH 1" PUSH THRU GRAPHICS VINYL OVERLAY

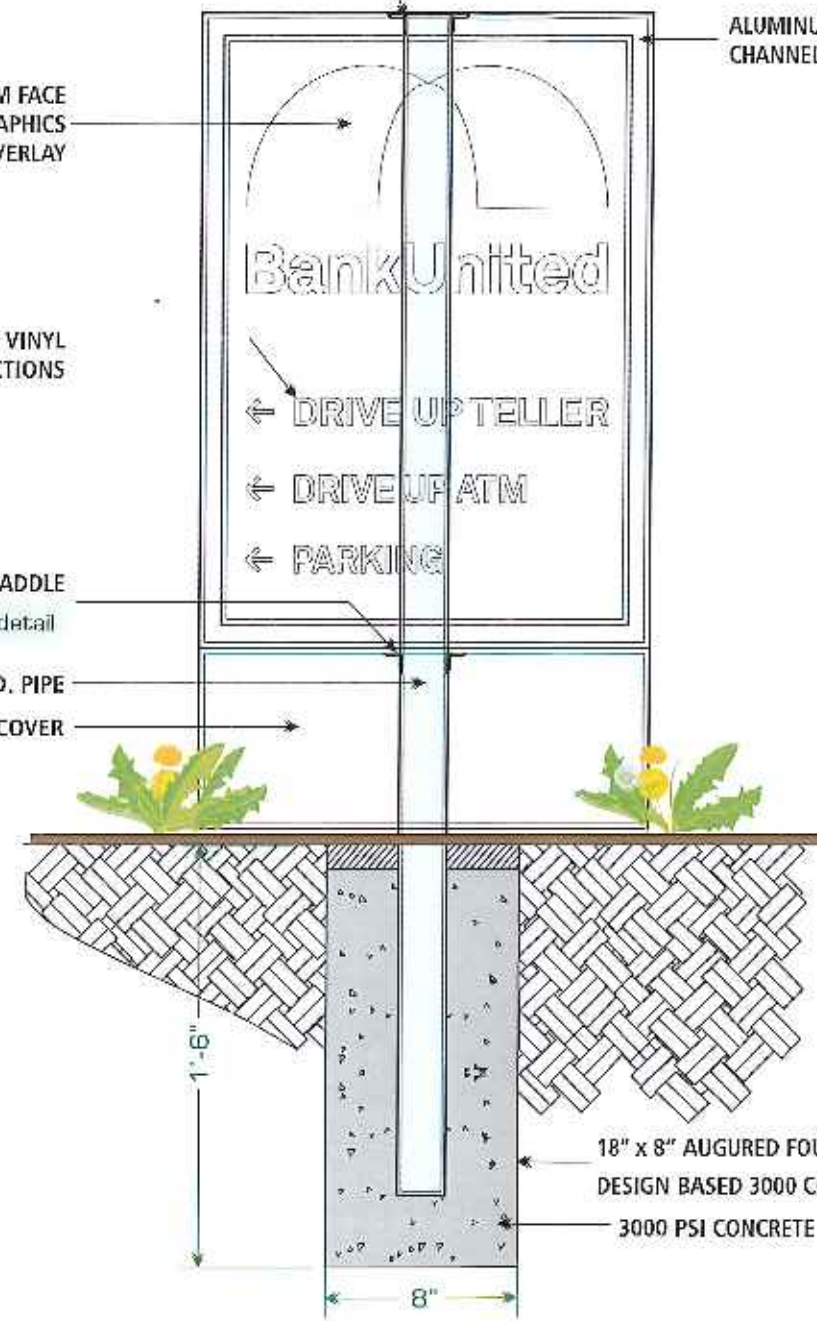
REFLECTIVE WHITE VINYL COPY DIRECTIONS

WELD SCHED. TO PIPE STEEL ANGLE SADDLE
A2- See Saddle detail

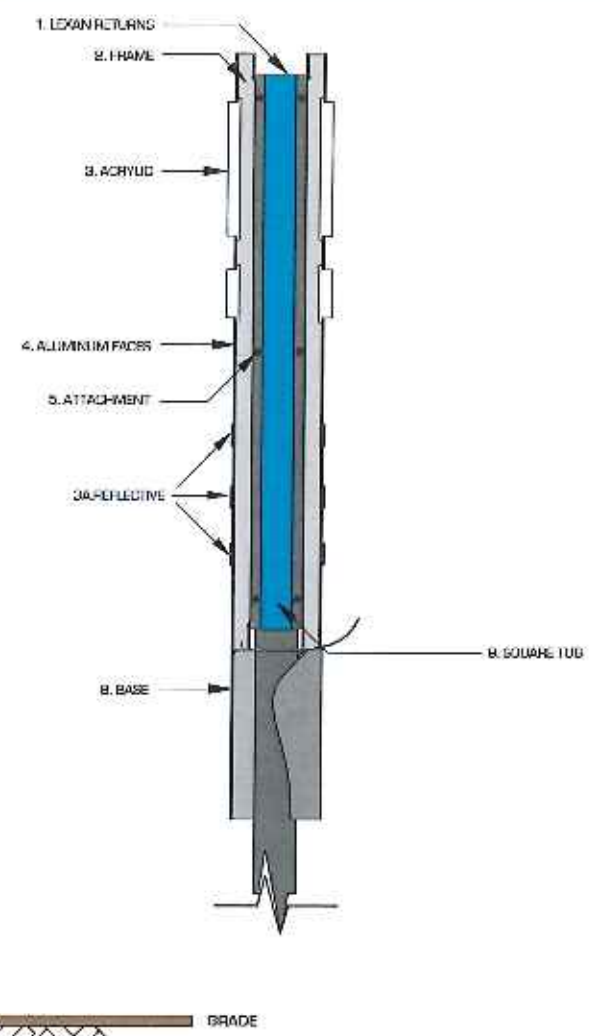
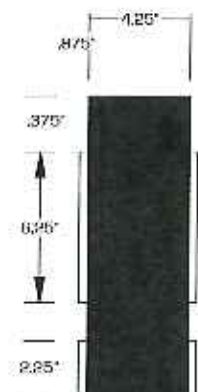
2" SCHED. PIPE
.090 WELDED ALUMINUM COVER

Scale 1-1/2" = 1'-0"

GRADE



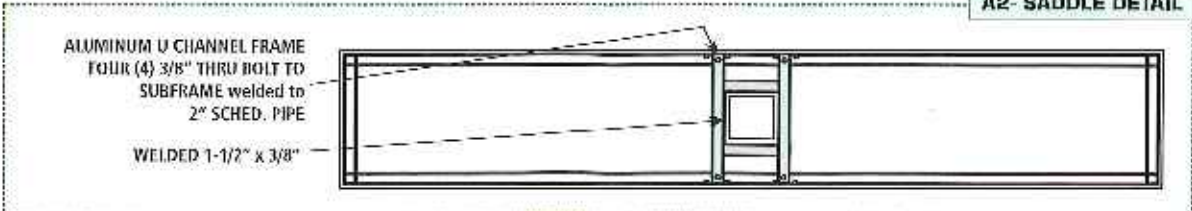
ALUMINUM U CHANNEL FRAME



18" x 8" AUGURED FOUNDATION
DESIGN BASED 3000 CONCRETE
3000 PSI CONCRETE

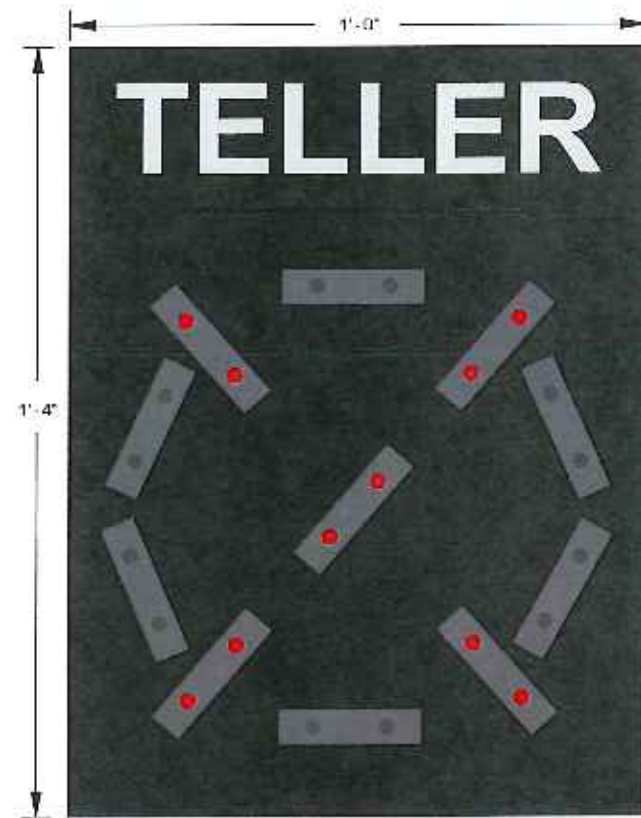
NON ILLUMINATED DOUBLE SIDED DIRECTIONAL SIGN

A2- SADDLE DETAIL



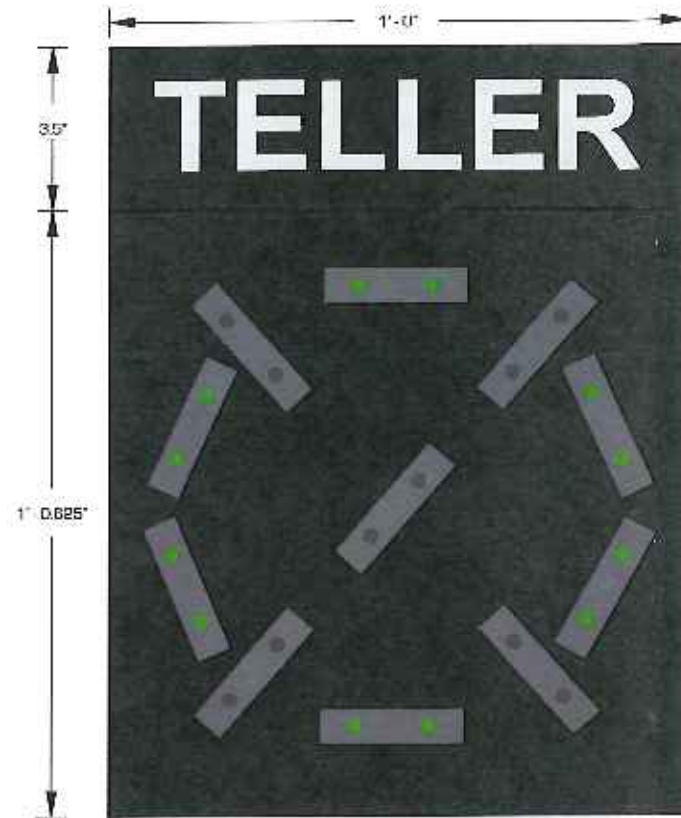
ENGINEER TONG LE P.E., INC.
Consulting Structural Engineers
5100 W Copans Rd. #710 Margate Fl.
Tong Le President (954)974-6560

Colors shown on drawing are for presentation purposes.
All colors must be confirmed and initialed by project manager before painting



SQUARE FOOTAGE: 1.52sqft. ILLUMINATION ONE
SIGN ILLUMINATED RED (STOP)

Scale: 3" = 1'-0"



ILLUMINATION TWO
SIGN ILLUMINATED GREEN (GO)

Square footage: 1.33

PAIN T COLOR PALLET
CLASSIC PEWTER METALLIC PM-18150

INTERNALLY ILLUMINATED
DUAL COLOR **DRIVE THRU SIGNAGE**

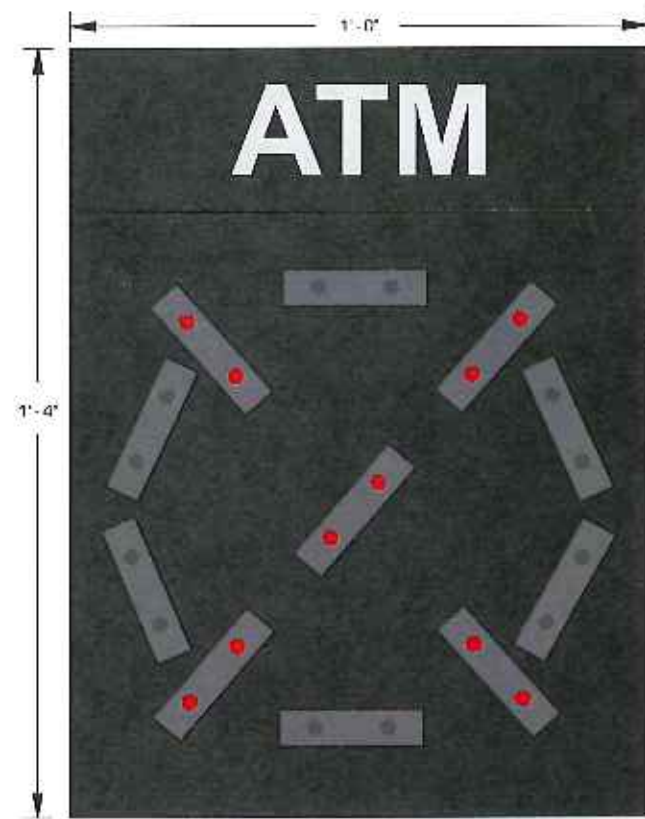
E09



Picture not into scale just for positioning only

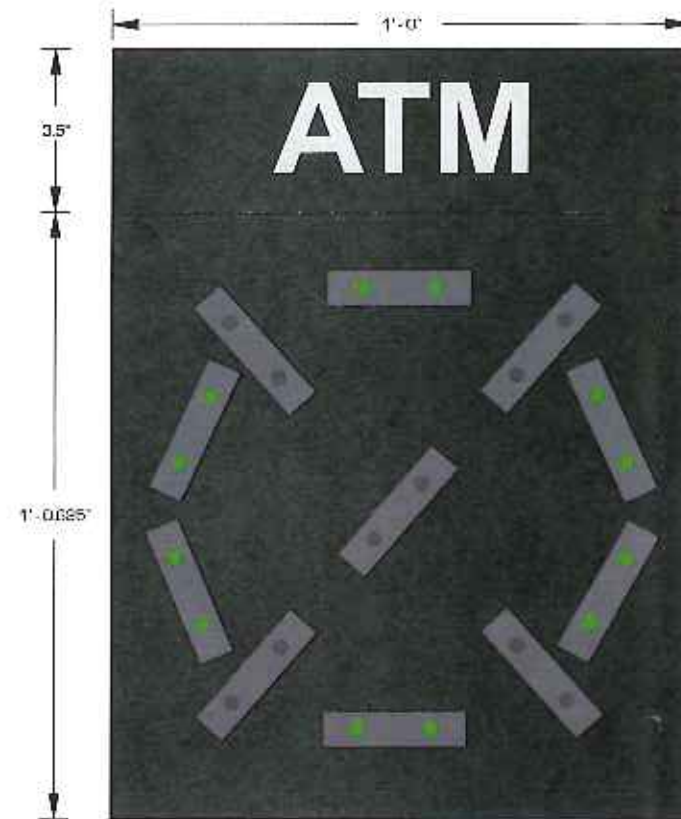


Colors shown on drawing are for presentation purposes.
All colors must be confirmed and initialed by project manager before painting



SQUARE FOOTAGE: 1.52sqft
ILLUMINATION ONE
SIGN ILLUMINATED RED (STOP)

Scale: 3" = 1'-0"



ILLUMINATION TWO
SIGN ILLUMINATED GREEN (GO)

Square footage: 1.33

PAINT COLOR PALLET
CLASSIC PEWTER METALLIC PM-18150

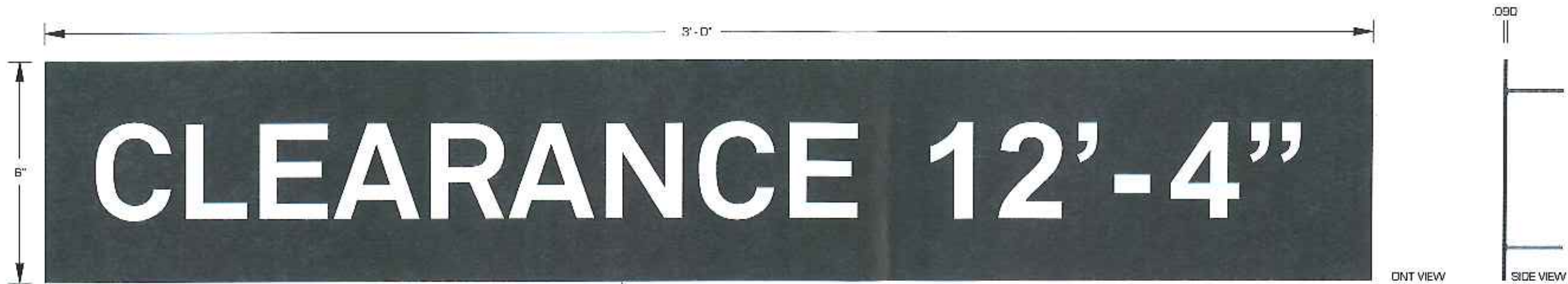
INTERNALLY ILLUMINATED
DUAL COLOR **DRIVE THRU SIGNAGE**

E10



Picture not into scale just for positioning only



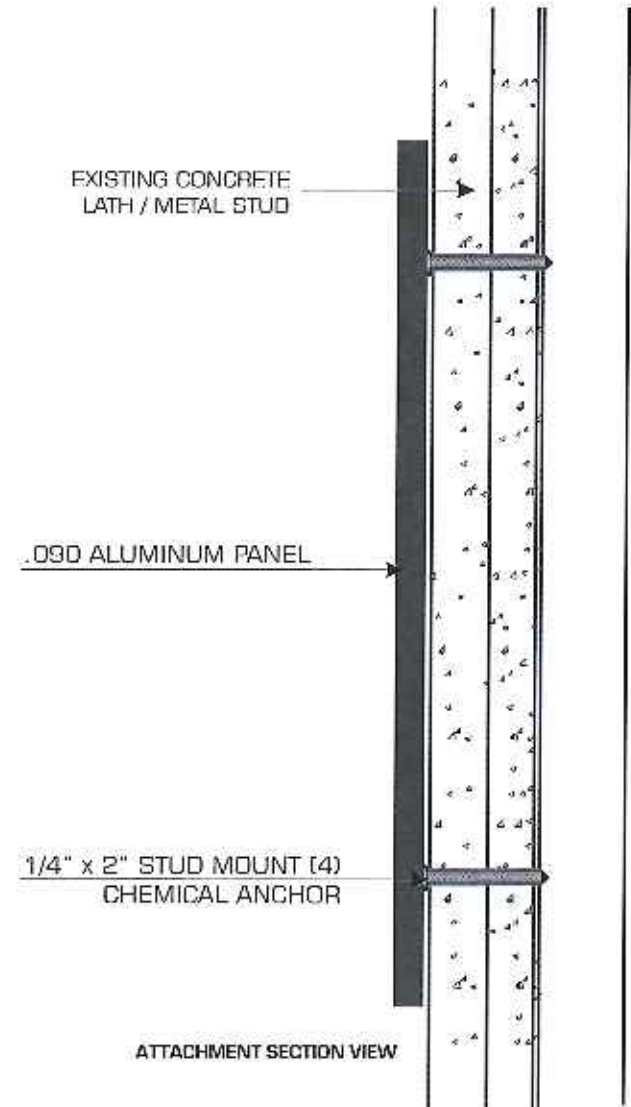


SQUARE FOOTAGE: 1.5sqft



Picture not in scale just for positioning only

SPECIFICATION INFORMATION
1. NON-ILLUMINATED WALL SIGN COMPOSED OF PAINTED ALUMINUM MATERIAL WITH GRAPHIC VINYL OVERLAY. -COLOR: PAINTED CLASSIC PEWTER METALLIC PM-18150 W/ OPAQUE WHITE VINYL OVERLAY.
2. BUILDING FASCIA (CHECK FASCIA LEGEND FOR WALL TYPE AND ADDITIONAL INFORMATION)
3. SIGN WILL BE ATTACHED TO BUILDING FASCIA WITH 1/4" x 2" ALUMINUM PINS. PRE DRILLED AND FILLED WITH CLEAR SILICONE. MAXIMUM OF (6) SIX ATTACHMENTS REQ.



NOT ILLUMINATED .090 ALUMINUM PANEL

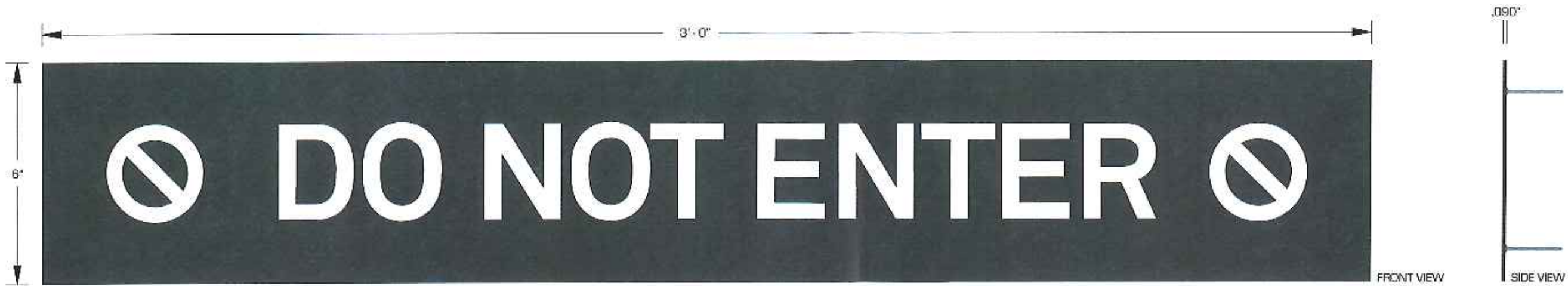
CLEARANCE SIGNAGE

E11

VINYL COLOR PALLET
OPAQUE WHITE VINYL GRAPHIC 3M 7725-10

PAINT COLOR PALLET
CLASSIC PEWTER METALLIC PM-18150



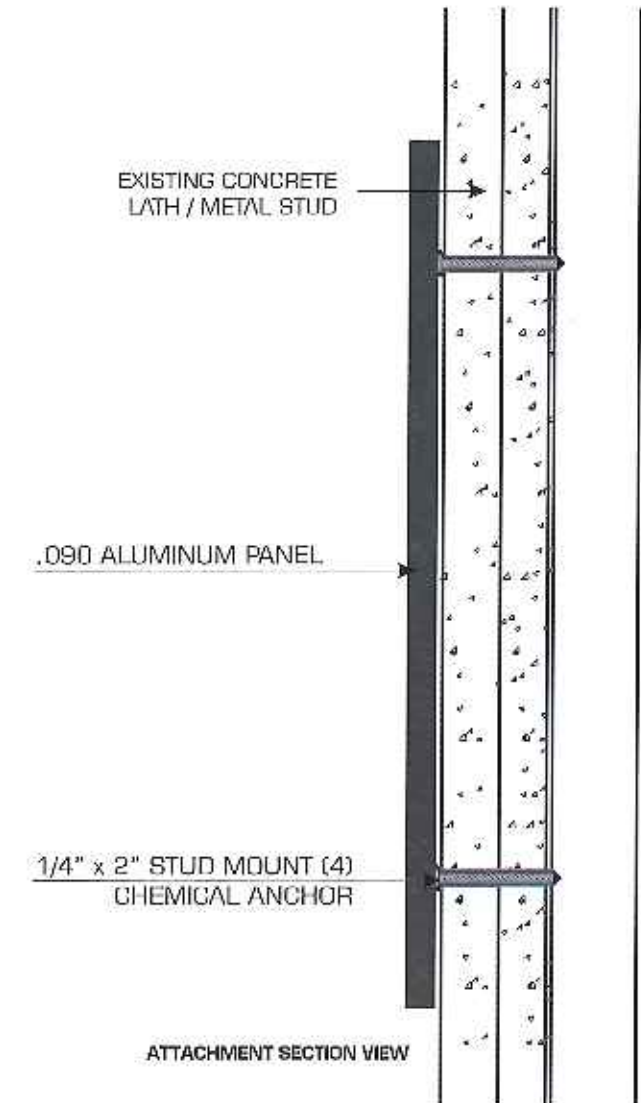


SQUARE FOOTAGE: 1.5sqft.



Picture not into scale just for positioning only

SPECIFICATION INFORMATION	
1. NON-ILLUMINATED WALL SIGN COMPOSED OF PAINTED ALUMINUM MATERIAL WITH GRAPHIC VINYL OVERLAY. -COLOR: PAINTED CLASSIC PEWTER METALLIC PM-18150 W/ OPAQUE WHITE VINYL OVERLAY.	
2. BUILDING FASCIA (CHECK FASCIA LEGEND FOR WALL TYPE AND ADDITIONAL INFORMATION)	
3. SIGN WILL BE ATTACHED TO BUILDING FASCIA WITH 1/4" x 2" ALUMINUM PINS. PRE DRILLED AND FILLED WITH CLEAR SILICONE. MAXIMUM OF (6) SIX ATTACHMENTS REQ.	



NOT ILLUMINATED .090 ALUMINUM PANEL

DO NOT ENTER SIGNAGE

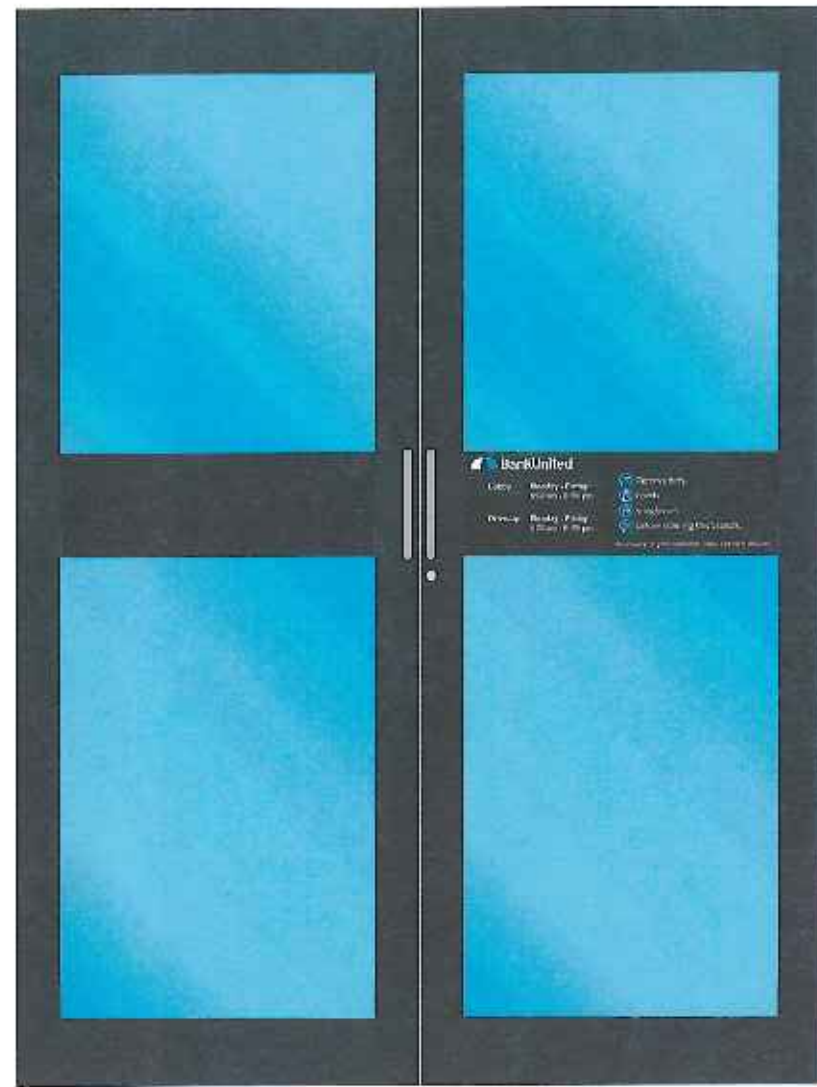
E12 E13

FASCIA LEGEND	
CONCRETE	
WOOD	
EFFIS	
DRMIT	
<i>OTHER</i>	

VINYL COLOR PALLET	
OPAQUE WHITE VINYL GRAPHIC 3M 7725-10	

PAINT COLOR PALLET	
CLASSIC PEWTER METALLIC PM-18150	





9 1/4"

SPECIFICATION INFORMATION

FIRST SURFACE WINDOW DIGITAL GRAPHIC DOOR VINYL.
 1. COLOR: OPAQUE WHITE VINYL 3M 7725-10(FIRST SURFACE)
 2. COLOR: PROCESS BLUE VINYL 3M 3630-37 WITH OPAQUE WHITE VINYL 3M 7725-10 UNDERNEATH FOR OPACITY (FIRST SURFACE)

VINYL COLOR PALLET

	OPAQUE WHITE VINYL GRAPHIC 3M 7725-10
	PROCESS BLUE VINYL OVERLAY 3M 3630-37
	CLASSIC PEWTER METALLIC PM-18150

NOTE: CENTER VINYL W/ DOOR HANDLE

NOTE: BANK HOURS MAY DIFFER FROM LOCATION TO LOCATION

FIRST SURFACE VINYL FOR ENTRANCE DOORS

E14



Lobby Monday - Friday
8:00 am - 6:00 pm

Drive-up Monday - Friday
8:00 am - 6:00 pm

- Remove hats,
- hoods,
- sunglasses
- before entering this branch..

No smoking, no pets, no bicycles. Shoes and shirts required!



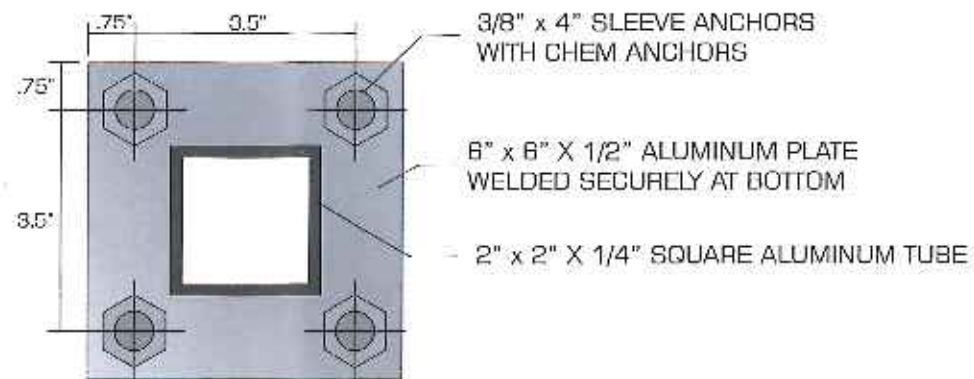


SQUARE FOOTAGE: 1.5sqft FRONT VIEW

NOTE: VINYL COPY WILL BE DETERMINED ON A SITE BY SITE BASIS FONT USED FOR SIGNAGE IS AKKUNITA



SIDE VIEW



BASE PLATE SECTION

PARKING SIGN

ALUMINUM PANEL WITH GRAPHIC VINYL OVERLAY

E15

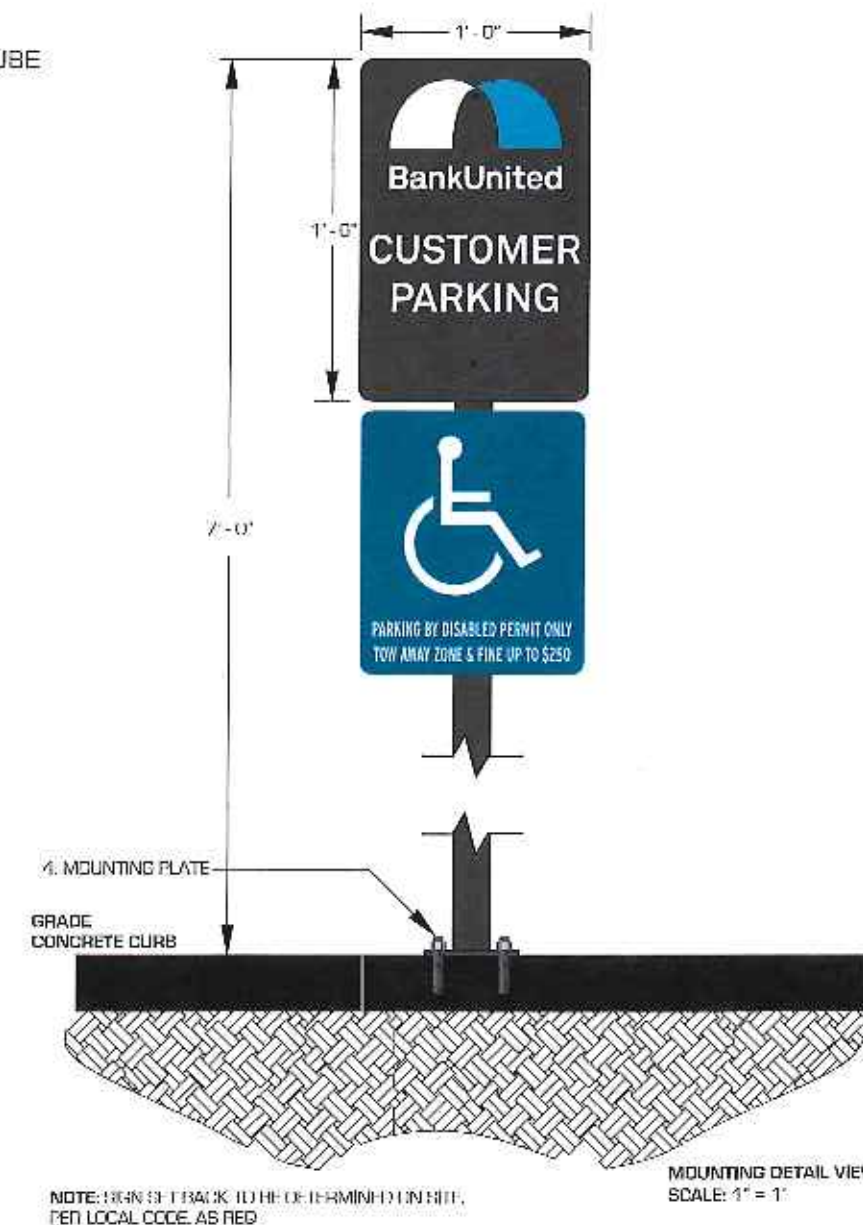
SPECIFICATION INFORMATION

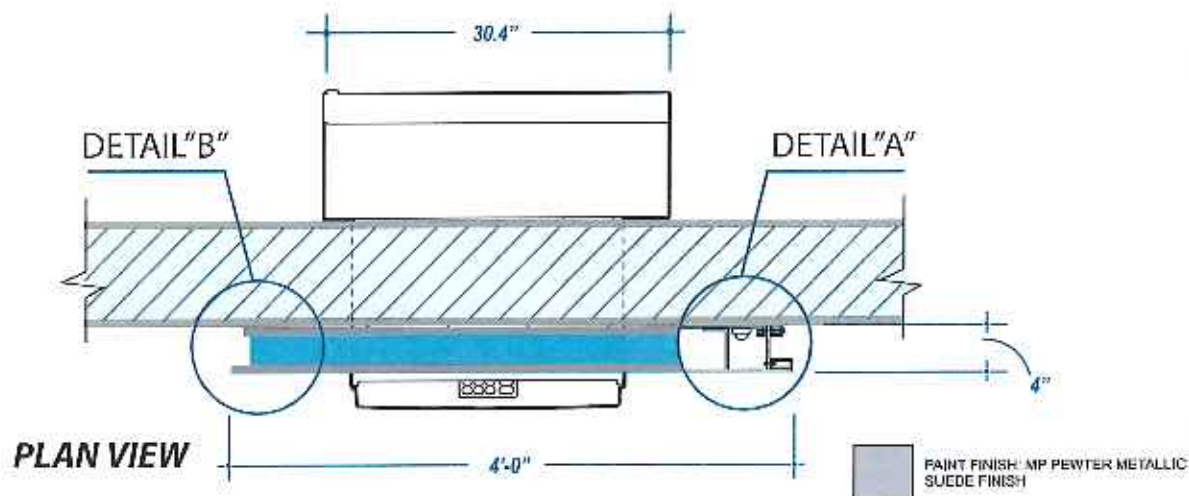
1. NON-ILLUMINATED SIGN COMPOSED OF .090" THICK PAINTED ALUMINUM MATERIAL WITH GRAPHIC VINYL OVERLAY.
-COLOR: PAINTED CLASSIC PEWTER METALLIC PM-18150 W/ OPAQUE WHITE VINYL OVERLAY AND PROCESS BLUE 3M 3630-37 3M REFLECTIVE WHITE 2801-10
2. ALUMINUM FACE WILL BE ATTACHED TO SIGN POST WITH INDUSTRIAL ADHESIVE AND COUNTERSUNK SCREWS. (2) TWO REQ.
3. SIGN POST COMPOSED OF 2" x 2" x 1/4" THICK STEEL.
-COLOR: PAINTED CLASSIC PEWTER METALLIC PM-18150
4. SIGN POST TO BE DIRECT BURIAL INTO SOLID CONCRETE

VINYL COLOR PALLET	
OPAQUE WHITE VINYL GRAPHIC 3M 7773-10	
PROCESS BLUE VINYL OVERLAY 3M 3630-37	
3M REFLECTIVE WHITE 2801-10	

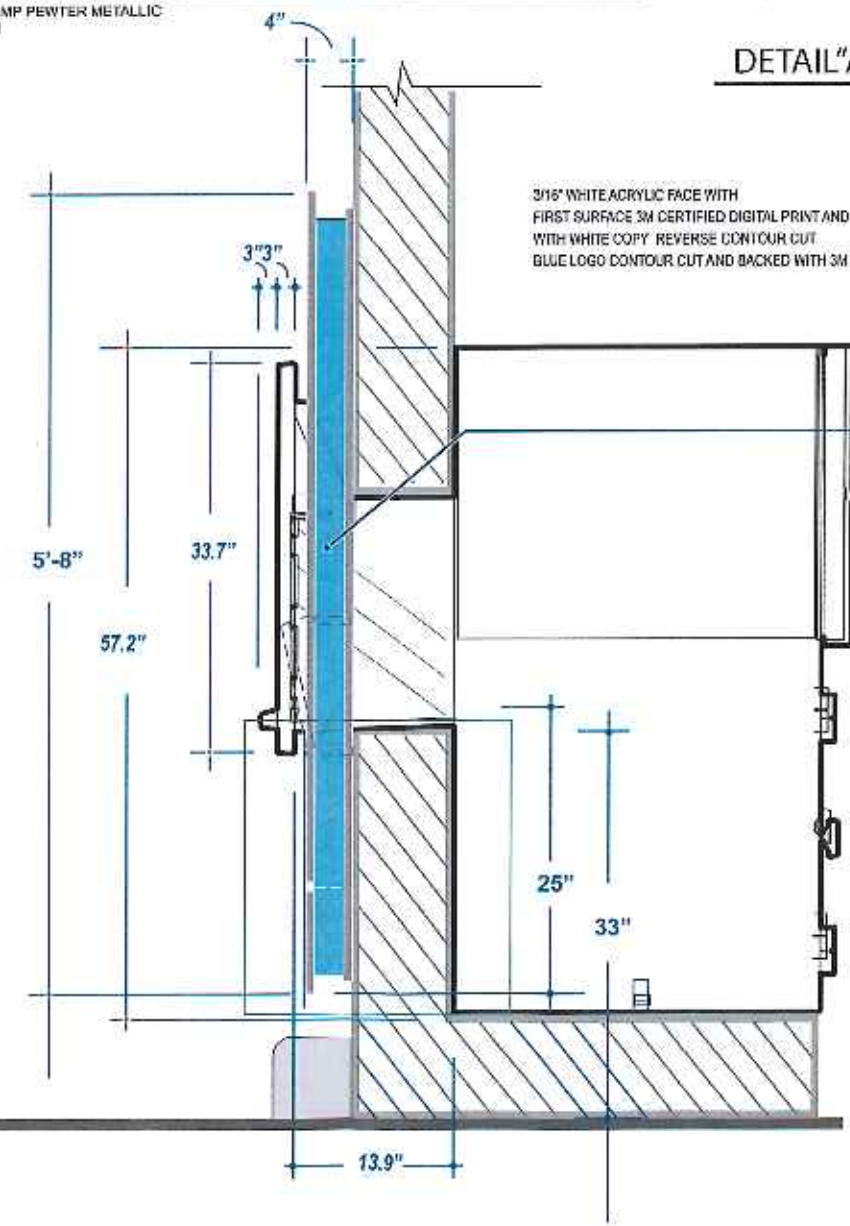
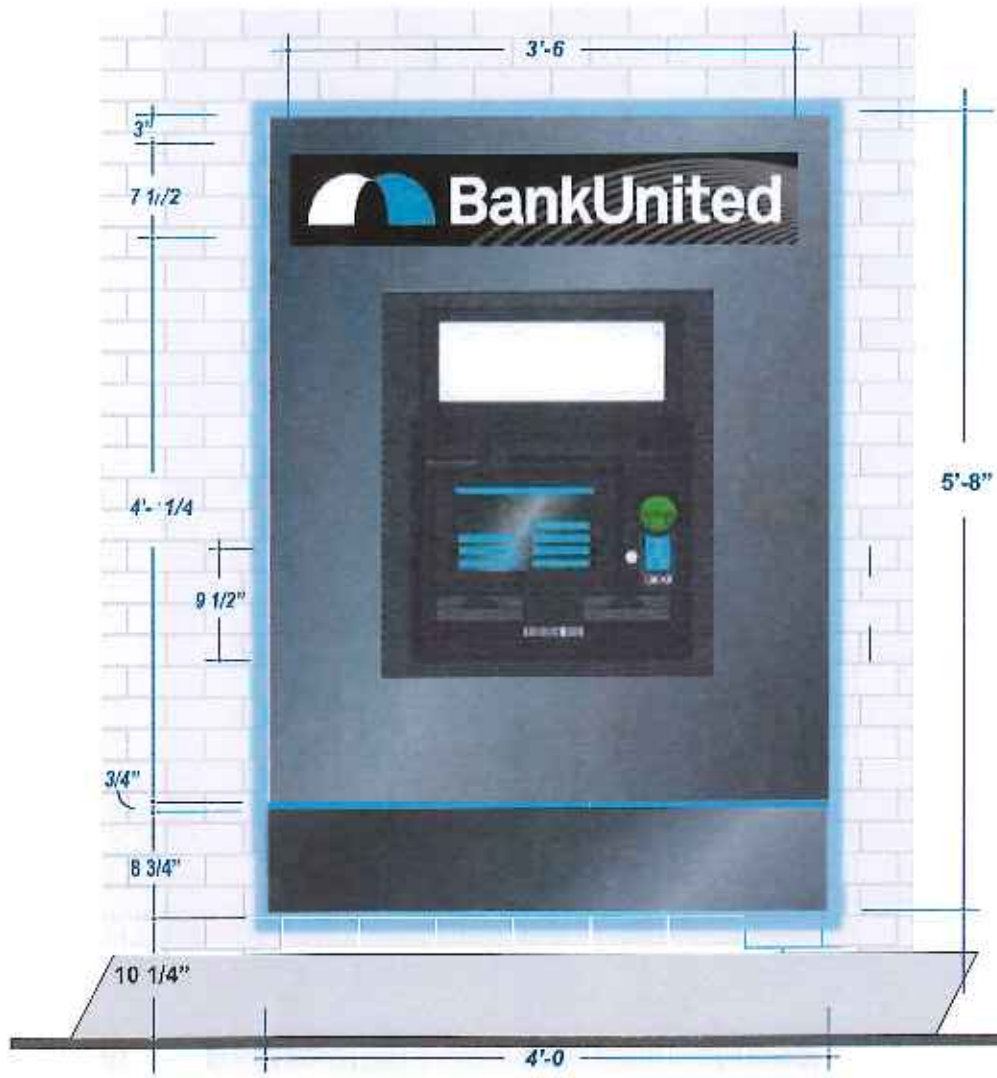
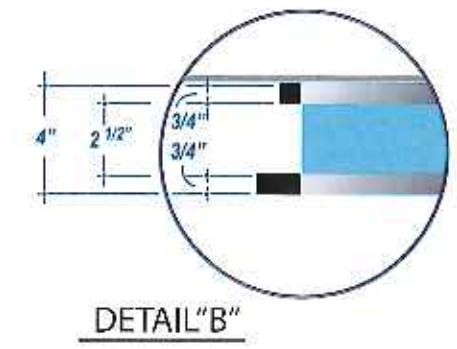
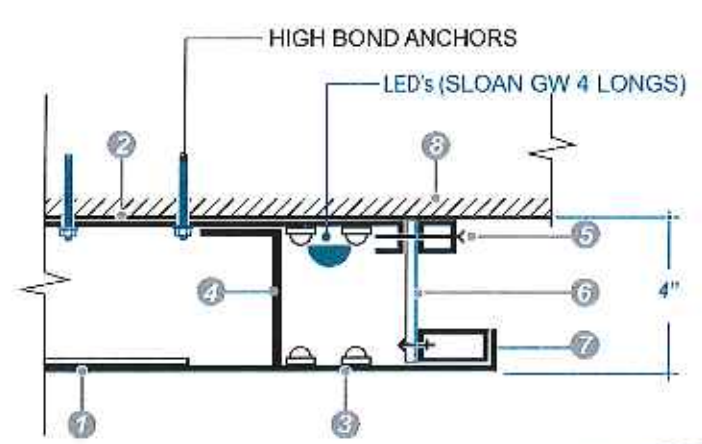
PAINT COLOR PALLET	
CLASSIC PEWTER METALLIC PM-18150	

NAME: JOHN HOLT
 ADDRESS: 828 Azure Avenue, West Palm Beach, FL 33414
 PHONE: 561-755-7943
 ORDER REG NO. 15252
 DESIGN CRITERIA:
 EXPOSURE NO.: ASCE 7-05
 2007 NBC
 BUILT TO WITHSTAND 150 MPH
 DATE: / /





- 1 Lexan face with applied printed digital graphics first surface.
- 2 Continuous aluminum .125" backer panel fastened to wall screws as needed.
- 3 1/8" thick aluminum face.
- 4 Continuous angle bracket with lightbaffle to support L.E.D.'s
- 5 3/4" square tube.
- 6 riveted to perimeter tube.
- 7 3/4" x 1 1/2" rec. tube chemically bonded to back of face.
- 8 Existing wall.



VINYL APPLICATION DETAIL:

	EXTERIOR	INTERIOR
3M 5630-337	[Blue line]	[White line]
3M 5630-337	[Blue line]	[White line]
.155" CLEAR LEXAN	[White line]	[White line]
3M 3695-70 DIFFUSER	[Blue line]	[White line]



FRONT VIEW

SIDE VIEW

3 DIMENSIONAL VIEW

INTERNALLY ILLUMINATED
DRIVE UP ATM SLEEVE WITH HEADER PANEL

E16



Any party accepting this document does so in confidence and agrees that it should not be duplicated, in whole or in part, nor disclose to others, without the written consent of the client. Reference copy list for copy/graphic specific to each sign location. Contractor shall verify all conditions on site and notify any variation from what is shown on the drawings before proceeding with fabrication.

Broward & North Wall Sign

1. Design, fabrication and construction to the following codes and specifications:

- A. The Florida Building Code 2010
- B. American Welding Society AWS D1.2 2003
- C. Specifications for aluminum structures by the Aluminum Association (Current Edition)

2. Structural requirements:

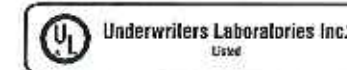
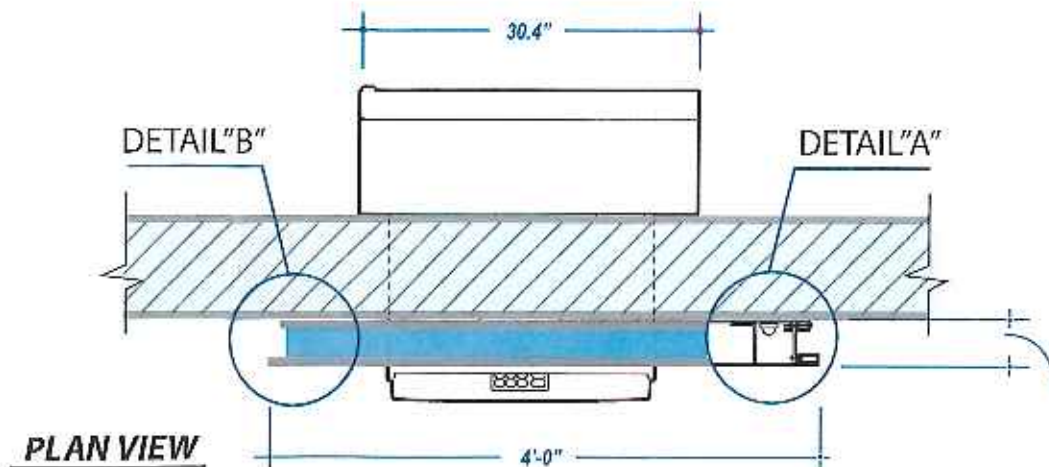
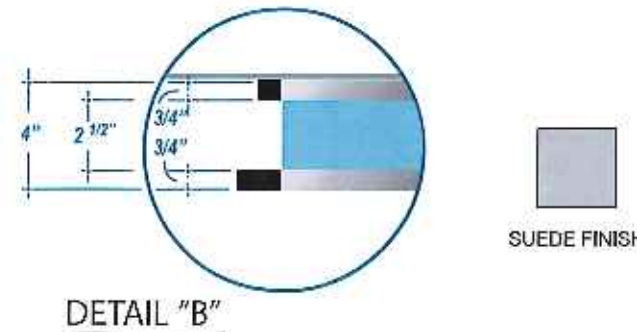
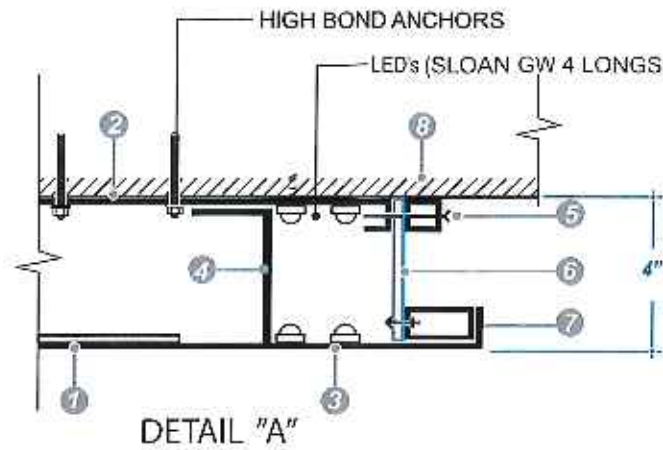
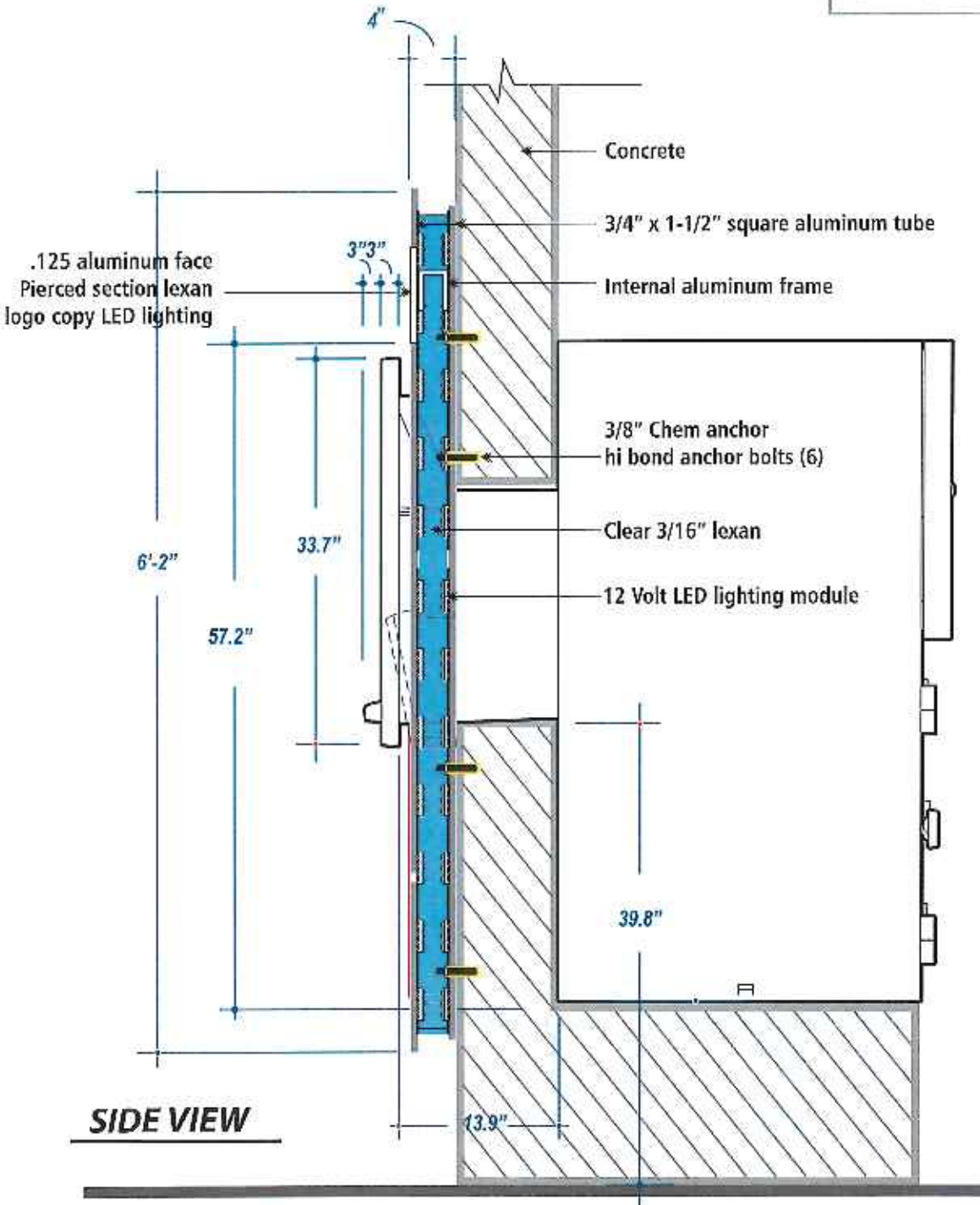
- A. All bolted connections shall be made with ASTM A307 bolt or equal
- B. All anchors bolts shall be ASTM A307 or equal (flat washers at nut)
- C. All welds shall be made with E70XX electrodes or equal
- D. The electrical installation shall be in compliance with the National Electric Code (NEC 2008) grounding and bonding as per NEC 250 600-7
- E. H.V.H.Z., section 1620 F.B.C., ASCE 7-10 170 MPH, exposure C, Category 2, Chapter 16

- 1 Lexan face with applied printed digital graphics first surface.
- 2 Continuous aluminum .125" backer panel fastened to wall screws as needed.
- 3 1/8" thick aluminum face.
- 4 Continuous angle bracket with lightbaffle to support L.E.D's
- 5 3/4" square tube.
- 6 Riveted to perimeter tube.
- 7 3/4" x 1 1/2" rec. tube chemically bonded to back of face.
- 8 Existing wall.

VINYL APPLICATION

3M 3630-337	EX
3M 3630-337	EX
.155" CLEAR LEXAN	IN
3M 3635-70 DIFFUSER	IN

3/16" WHITE ACRYLIC FACE WITH FIRST SURFACE 3M CERTIFIED DIGITAL PRINT AND OVER-LAMINATE WITH WHITE COPY REVERSE CONTOUR CUT BLUE LOGO CONTOUR CUT AND BACKED WITH 3M 3630-337



ELECTRICAL SPECIFICATIONS:
 All electrical components are UL Listed
 Signage Grounding and Bonding As Per NEC 250
 Primary wiring #12 THHN As Per NEC 600-6
 Minimum 20 Amp. Disconnect Switch Per NEC 240
 Minimum 1/2" Conduit, Time Clock or photo Cell per NEC
 All Ballast Electrical to have In-Line Fuses

QTY	SOURCE	SIZE	AMPS	TOTAL

CIRCUITS REQUIREMENTS	
# CIRCUITS REQUIRE	TOTAL AMPS
# 20 APMS DISCONNECT SWITCHES	
BREAKER #	PANEL

ENGINEER TONG LE PE., INC.
 Consulting Structural Engineers
 5100 W Copans Rd. #710 Margate Fl.
 Tong Le President (954)974-6560