



# CONVERSION PROGRAM

# CHECK LIST

November 3, 2009

4809 Coconut Creek Pkwy  
Coconut Creek, FL 33063-3903

**PID W1762**

**COCONUT CREEK**

### Revision Notes

1. Changed letter set size. Added a deleted by customer on one of the regulatory sign. Changed from pole mount to wall mount on regulatory sign. Added additional copy to directional. Added qty to bollards. Added additional removal on existing sign.	02/12/09 LV
2.	
3. Added ADA copy to Regulatory signs, changed ATM to new North Coral Springs specs, changed awning to FFA-CUST	04/15/09 JLM
4. add engineering details	5/26/09 GB
5. correct sign #1, add temp banners	7/29/09 GB
6. rev. channel letter sizes, oah of directionals & make regulatory signs remain. added specs to make sign link compliant	10/7/09 rr
7. Revised per Development Review Supervisor notations	11/3/09 JLF

- Drawing has correct PID Number & Address
- Correct drawing number or revision number is displayed
- Signs that are (morphed) onto photographs are properly scaled based on provided survey information
- Drawing has been spell checked
- Sign Schedule and description notes match what is being proposed
- Site schedule matches site plan & drawing pages
- Family of Signs was utilized for proper referencing and general material callout references
- Most current drawing date is displayed
- Proper orientations for all signs are called out (side a - side b - etc...)
- Custom Signs are identified as a "-CUST" in the sign schedule
- Drawing pages are in the correct order and the correct overall page count is correct
- All letter & logo sizes are called out for replacement faces
- Branding matches engineering (if applicable)
- Engineering specifications are all current to latest manufacturing release docs & copies of those spec pages are included in this drawing packet
- Confirm disconnect switches are called out for all illuminated signs

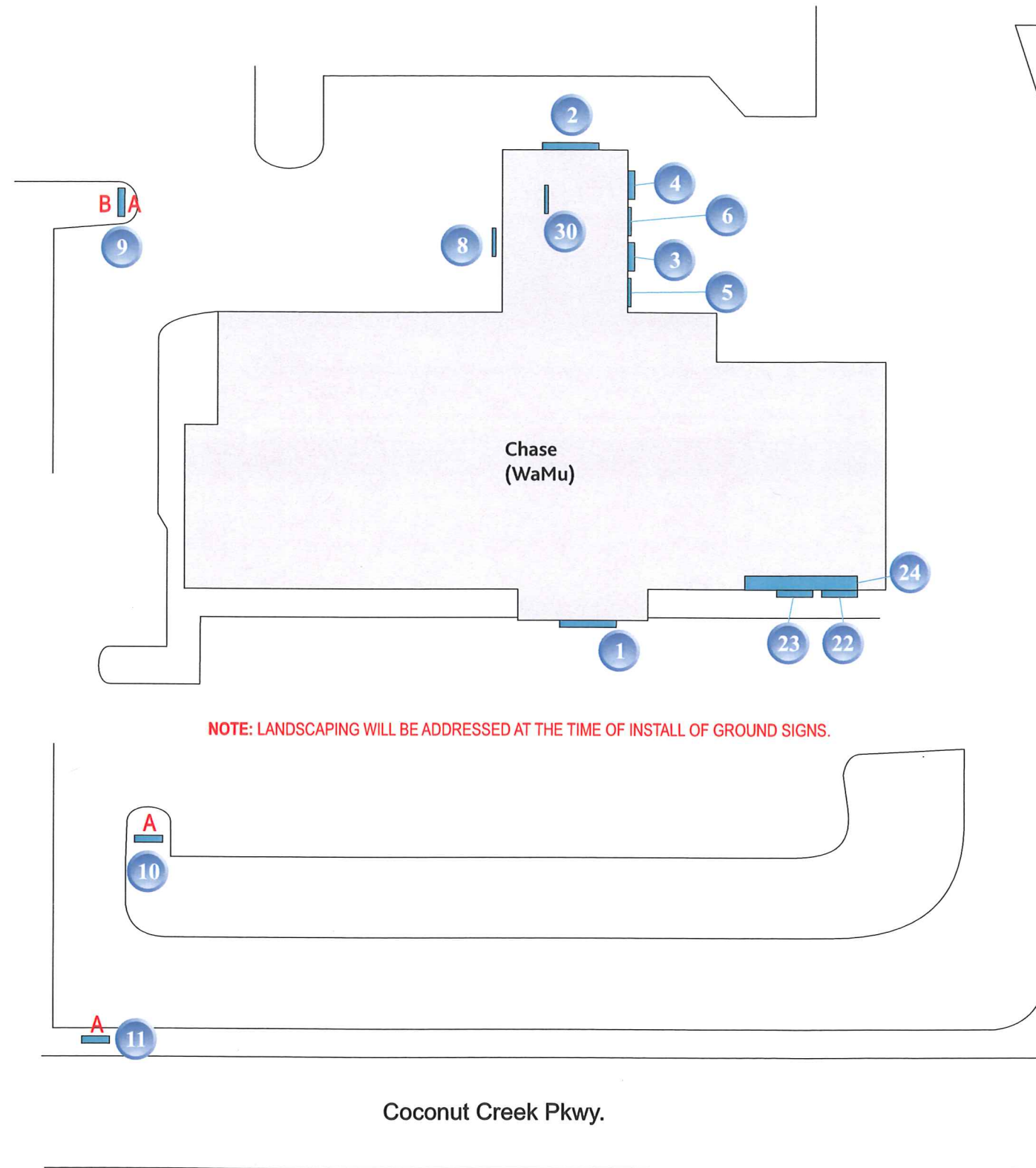
**APPROVED**

DATE: 12/15/09 BY:   
**ADMINISTRATIVE APPROVAL**

Designer  JLF

Project Manager





SIGN SCHEDULE			
Proposed Sign Inventory			
Site #	#	Sign Code	Description
W1762	1	LIF-BLK-14	Channel Letters
W1762	2	LIF-BLK-16	Channel Letters
W1762	3	DU-B	Lane Designator
W1762	4	DU-B	Lane Designator
W1762	5	TC-3-W	Clearance Sign
W1762	6	TC-3-W	Clearance Sign
W1762	7	DBC	Deleted By Customer
W1762	8	TC-W-H	Regulatory Sign
W1762	9	D-5-CUST	Directional
W1762	10	D-5-CUST	Directional
W1762	11	D-5-CUST	Directional
W1762	12	REMAIN	Remain
W1762	13	REMAIN	Remain
W1762	14	REMAIN	Remain
W1762	15	REMAIN	Remain
W1762	16	REMAIN	Remain
W1762	17	REMAIN	Remain
W1762	18	REMAIN	Remain
W1762	19	REMAIN	Remain
W1762	20	REMAIN	Remain
W1762	21	REMAIN	Remain
W1762	22	SUR-ATM-NCS-CUST	ATM Surround
W1762	23	SUR-ATM-NCS-CUST	ATM Surround
W1762	24	FFA-CUST	Awning
W1762	25	OBE	Bollards
W1762	26	REMOVE-RESTORE	Remove and Restore
W1762	27	REMOVE-RESTORE	Remove and Restore
W1762	28	REMOVE-RESTORE	Remove and Restore
W1762	29	REMOVE-RESTORE	Remove and Restore
W1762	30	REMOVE	Remove
W1762	31	B-26-CUST	Temporary
W1762	32	B-26-CUST	Temporary
W1762	33	V-TEMP-80	Temporary







CLIENT NAME  
**CHASE**

ADDRESS  
**4809 Coconut Creek Pkwy Coconut Creek, FL 33063**

SITE  
**W1762**

PAGE NUMBER  
**3**

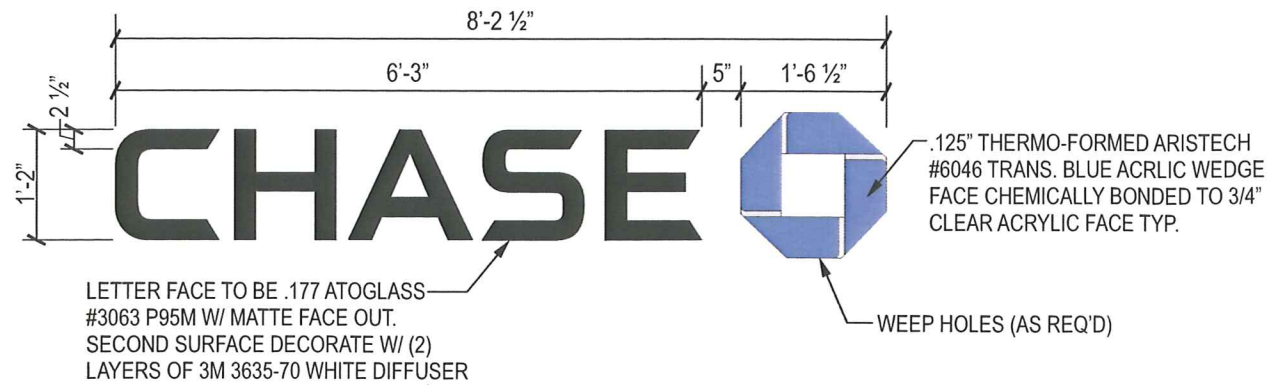
DRAWING NUMBER  
**09-106-7**

CORPORATE OFFICE: 360 CRIDER AVENUE MOORESTOWN, NJ 08057 P - 856.802.1677 F - 856.802.0412

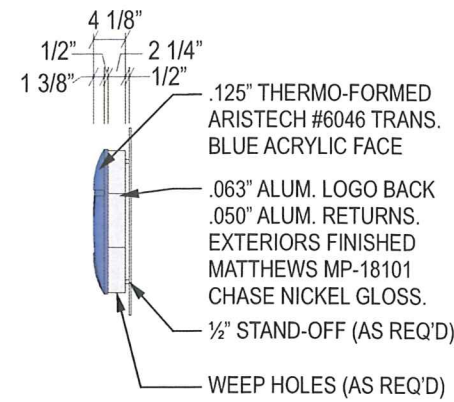
FLORIDA 2416 SAND LAKE ROAD ORLANDO, FL 32809 - TEXAS SERVICE CENTER 460 SOUTH BELTLINE ROAD SUITE 422 IRVING, TX 75060 - NORTH CAROLINA 120 CASCADE DRIVE CONCORD, NC 28027 - TEXAS 7303 BURLESON ROAD, SUITE 706 AUSTIN, TX 78744

THIS IS AN ORIGINAL UNPUBLISHED DRAWING CREATED BY NW SIGN INDUSTRIES, INC. IT IS PROVIDED FOR THE EXCLUSIVE USE BY THE CUSTOMER AND FOR THE PROJECT NAMED IN THIS TITLE BLOCK. IT SHALL NOT BE PROVIDED TO ANY OTHER SIGN MANUFACTURER OR USED FOR ANY OTHER PROJECT WITHOUT THE WRITTEN PERMISSION OF NW SIGN INDUSTRIES, INC. THIS DRAWING IS AN INSTRUMENT OF SERVICE AND SHALL REMAIN THE EXCLUSIVE PROPERTY OF NW SIGN INDUSTRIES, INC. ©NW SIGN INDUSTRIES, INC. 2008

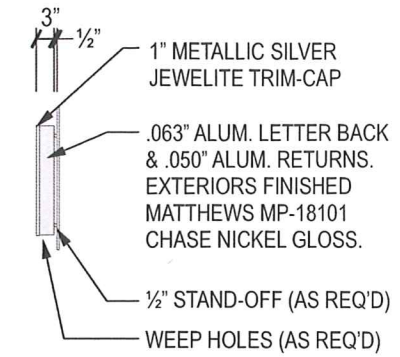




**1** CHANNEL LETTERS (BLACK LTRS / BLUE OCTAGON) LIF-BLK-14  
SCALE: 1/2" = 1' 0"



**OCTAGON - SIDE VIEW**  
SCALE: 1/2" = 1' 0"



**LETTER - SIDE VIEW**  
SCALE: 1/2" = 1' 0"

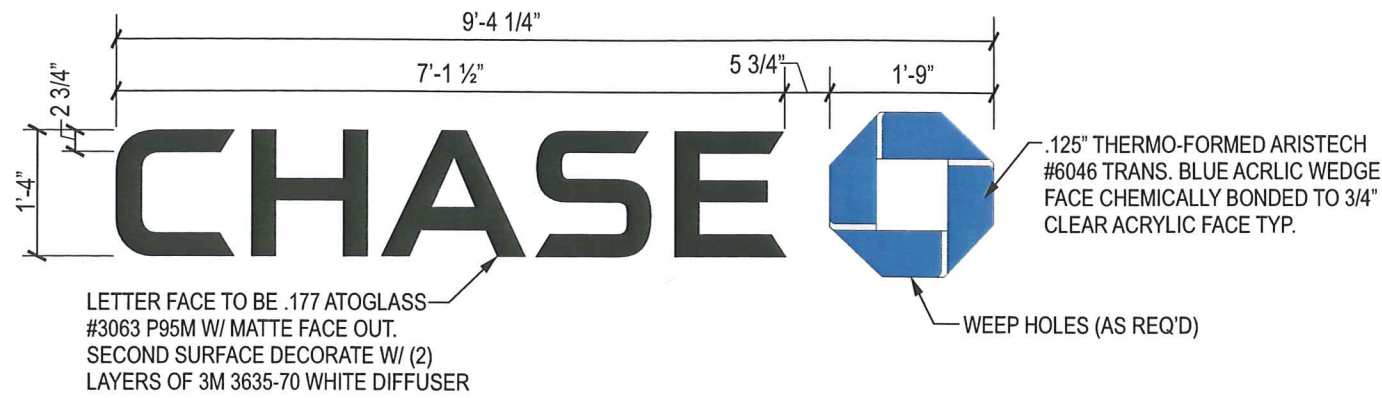
**26** RESTORATION - REMOVE-RESTORE  
SCALE: NTS



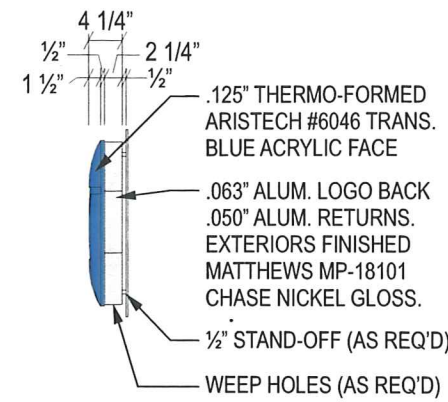
75% OF WALL LENGTH IS 12'-3"  
SIGN LENGTH IS 8'-2 1/2"

**FRONT ELEVATION - LIF-BLK-24**  
SCALE: NTS

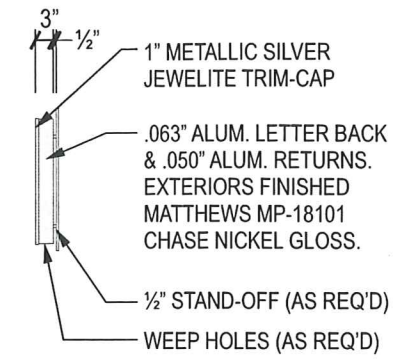




**2** CHANNEL LETTERS (BLACK LTRS / BLUE OCTAGON) LIF-BLK-16  
SCALE: 1/2" = 1' 0"

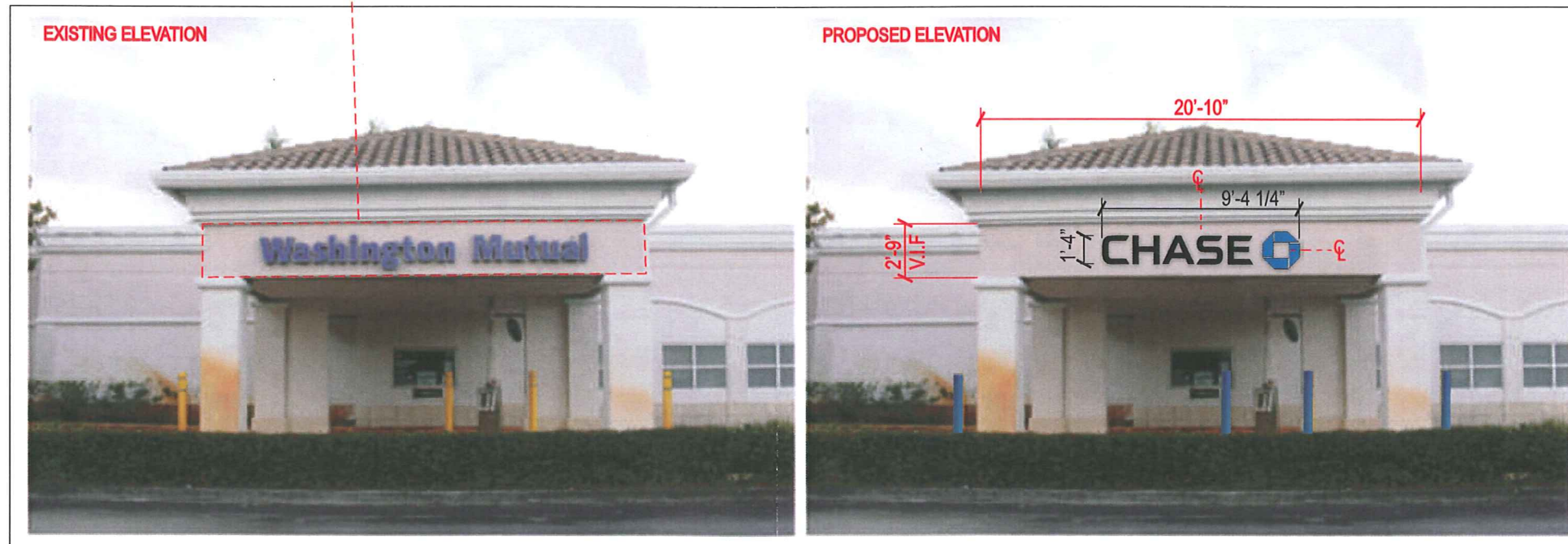


**OCTAGON - SIDE VIEW**  
SCALE: 1/2" = 1' 0"



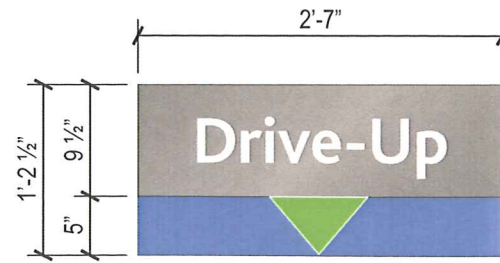
**LETTER - SIDE VIEW**  
SCALE: 1/2" = 1' 0"

**27 RESTORATION - REMOVE-RESTORE**  
SCALE: NTS



**REAR ELEVATION - LIF-BLK-16**  
SCALE: NTS

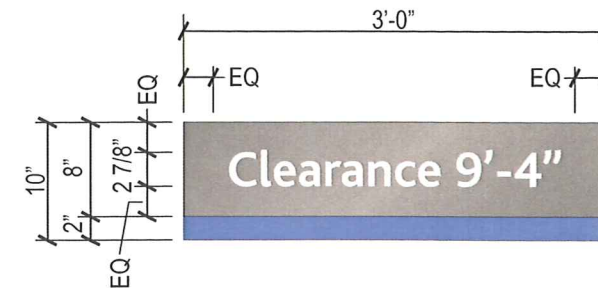




**4 DRIVE UP LANE DESIGNATOR - DU-B**  
SCALE: 3/4" = 1'-0"

**NOTES:**

Routed aluminum face painted MP-19891 Chase Nickel gloss backed up with white plex. Slanted aluminum cladding painted MP-00366 Chase Blue gloss with attached LED unit. Font: Bliss Bold



**6 CLEARANCE SIGN - TC-3-W**  
SCALE: 3/4" = 1'-0"

**NOTES:**

Routed aluminum face painted MP-19891 Chase Nickel gloss backed up with white plex. Bottom band painted MP-00366 Chase Blue gloss. Font: Bliss Bold

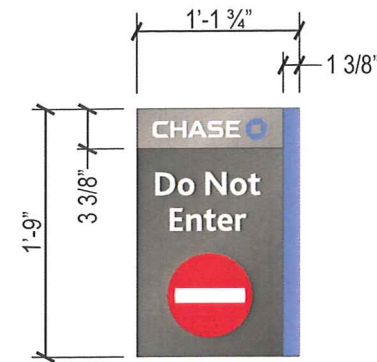
**28 RESTORATION - REMOVE-RESTORE**  
SCALE: NTS



**DRIVE THRU ELEVATION - DU-B, TC-3-W**  
SCALE: NTS



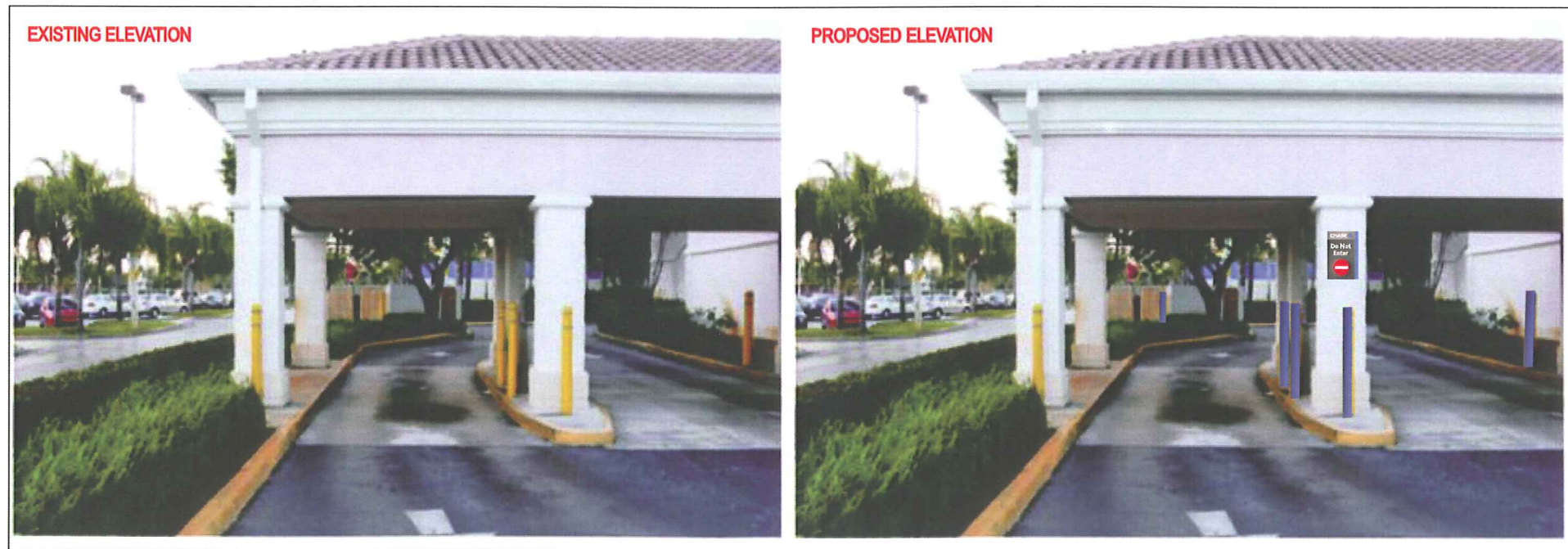
**7 DBC**



**8 WALL MOUNTED REGULATORY SIGN - TC-W-H**  
SCALE: 3/4"= 1'-0"

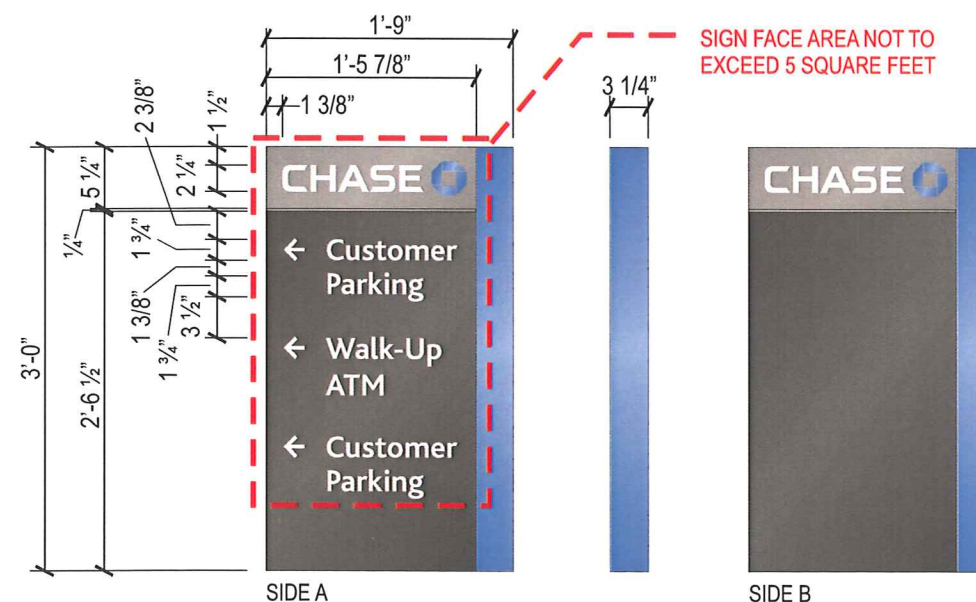
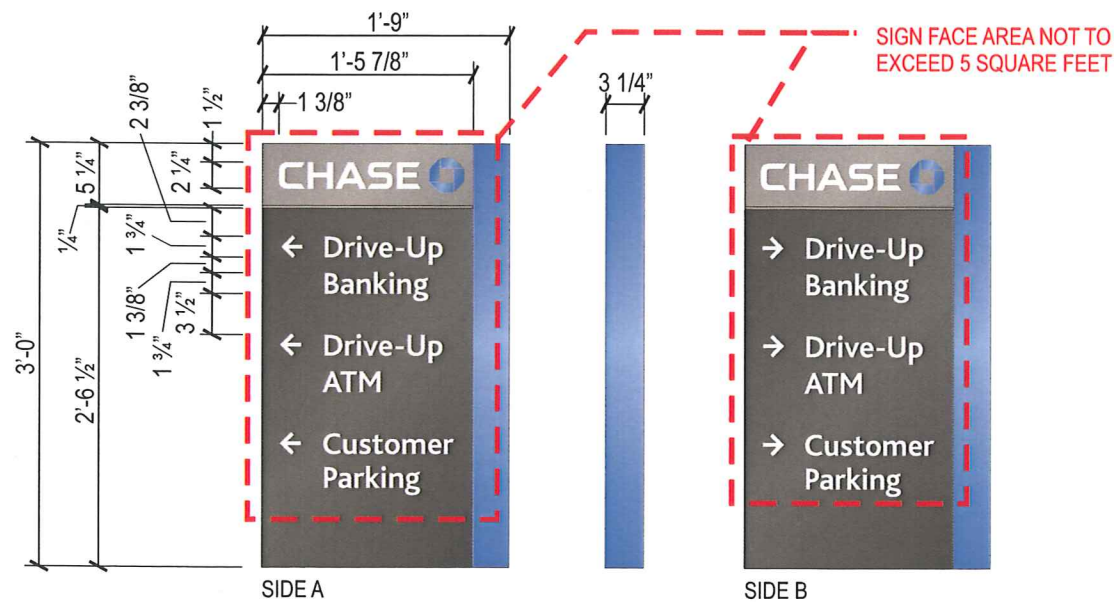
**NOTES:**

Bottom portion: .125" aluminum face painted MP-18248 Chase Dark Nickel gloss with applied 3M 680-10 white reflective vinyl copy. 3M 680-72 red reflective vinyl circle with 3M 680-10 white reflective vinyl bar.  
Top portion painted MP-19891 Chase Nickel gloss with applied 3M 7725-10 white and 3632-127 blue vinyl logo over 3M 7725-10 white vinyl.  
Blue border painted MP-00366 Chase Blue semi-gloss



**DRIVE THRU EXIT - TC-P-H**  
SCALE: NTS





**9 DIRECTIONAL -D-5-CUST**  
SCALE: 3/4" = 1'-0" 4.5 SQ FT

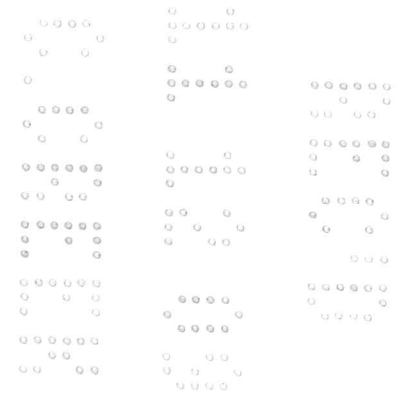
**10 DIRECTIONAL -D-5-CUST**  
SCALE: 3/4" = 1'-0" 4.5 SQ FT

**NOTES:**

Top Portion: Aluminum face finished 19891 Nickel with applied 3M 680-10 white reflective and 3M 680-76 Lt blue reflective vinyl graphics. Bottom portion finished 18248 dk nickel with applied 3M 680-10 white reflective vinyl graphics. Beveled return finished PMS 300.  
Font: Bliss Bold

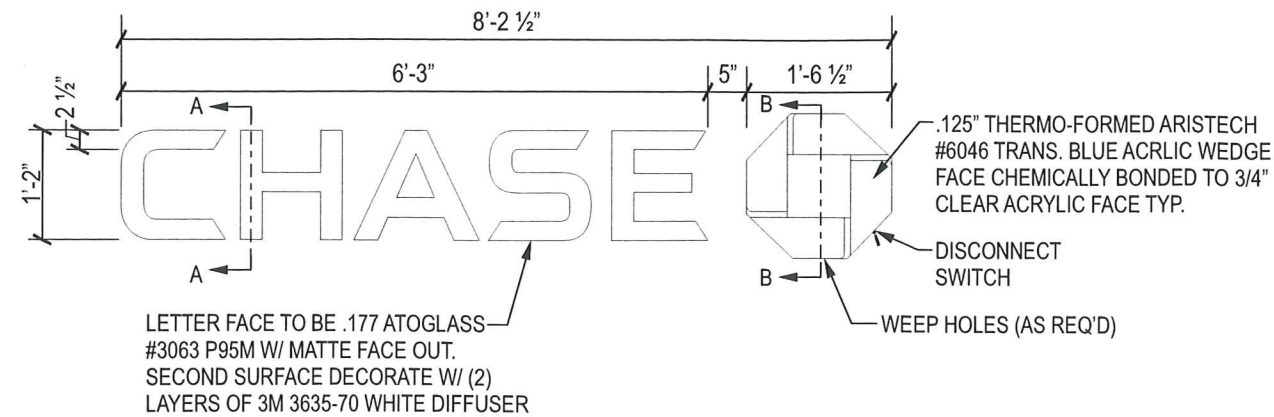
**NOTES:**

Top Portion: Aluminum face finished 19891 Nickel with applied 3M 680-10 white reflective and 3M 680-76 Lt blue reflective vinyl graphics. Bottom portion finished 18248 dk nickel with applied 3M 680-10 white reflective vinyl graphics. Beveled return finished PMS 300.  
Font: Bliss Bold





THIS DRAWING IS INTENDED FOR SITE SPECIFIC MOUNTING AND INSTALLATION PURPOSES. REFER TO THE LATEST LINK ENGINEERING SPECIFICATIONS FOR SPECIFIC FABRICATION METHODS.



**GENERAL NOTES:**

- U.L. LISTED - FILE NUMBER E157099
- ALL ELECTRICAL WORK SHALL BE PERFORMED IN ACCORDANCE WITH "NEC" REF. SECTION 600
- ALL ELECTRICAL SIGN SECTIONS TO HAVE U.L. LABEL IN ACCORDANCE WITH "NEC" 600.3 AND MANUFACTURERS LABEL LOCATED NEXT TO DISCONNECT SWITCH
- ALL NON-CURRENT CARRYING METAL PARTS OF SIGN SHALL BE GROUNDED & BONDED IN ACCORDANCE WITH "NEC" 250
- ALL WIRING CONTAINED IN ENCLOSED AREAS WITH LAMPS SHALL BE FIXTURE RATED
- SPlicing OF CONDUCTORS SHALL BE MADE IN JUNCTION BOXES OR SIMILAR METAL ENCLOSURES
- AT THE POINT THAT ELECTRICAL CABLE PASSES THRU THE SIGN BOX, IT SHALL PASS THRU A U.L. LISTED RUBBER GROMMET

BASIC WIND SPEED 140 MPH  
-3 SEC GUST WIND  
IMPORTANCE FACTOR: 1.0  
EXPOSURE B

**ESTIMATED SIGN WEIGHT**

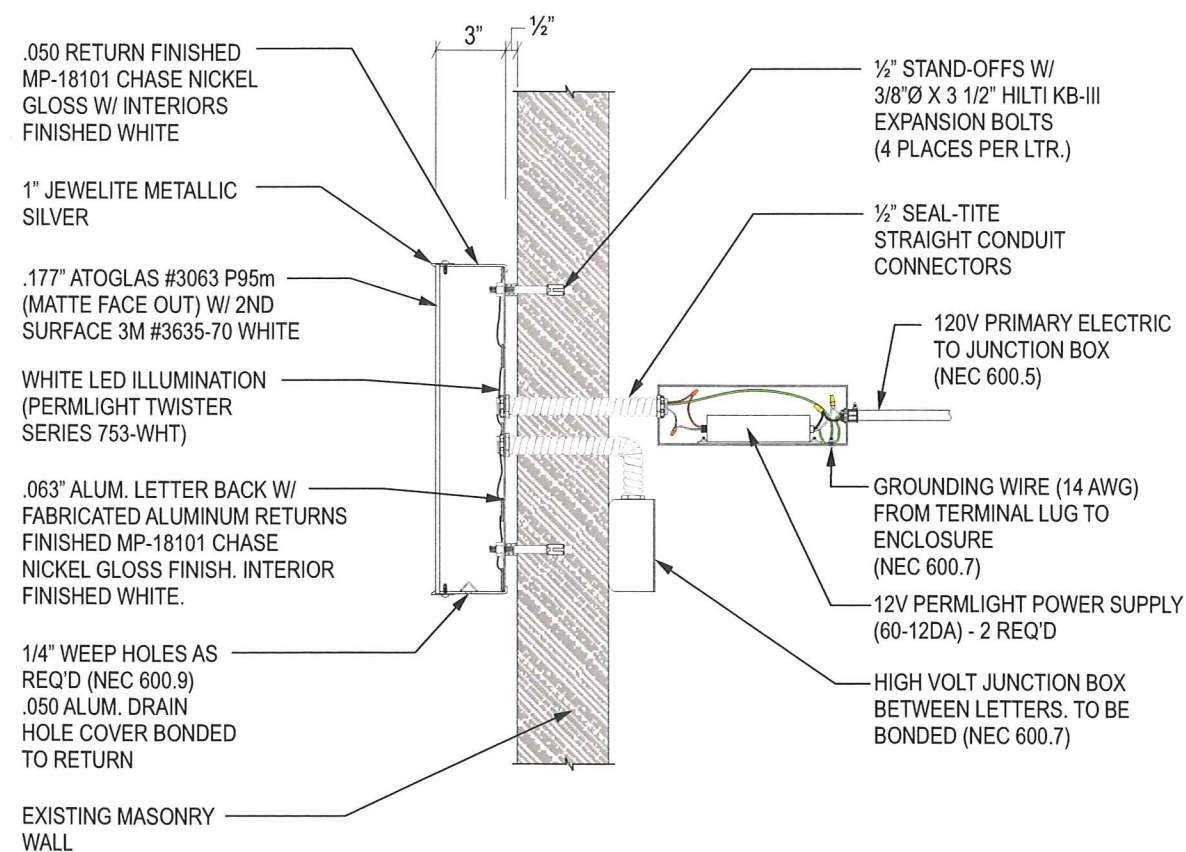
-5 lbs. PER LETTER  
-10 lbs. PER LOGO

**ESTIMATED ELECTRICAL LOAD**

1.3A @ 120VAC  
**ESTIMATED ELECTRICAL REQUIREMENTS**  
(1)20A circuit @ 120VAC

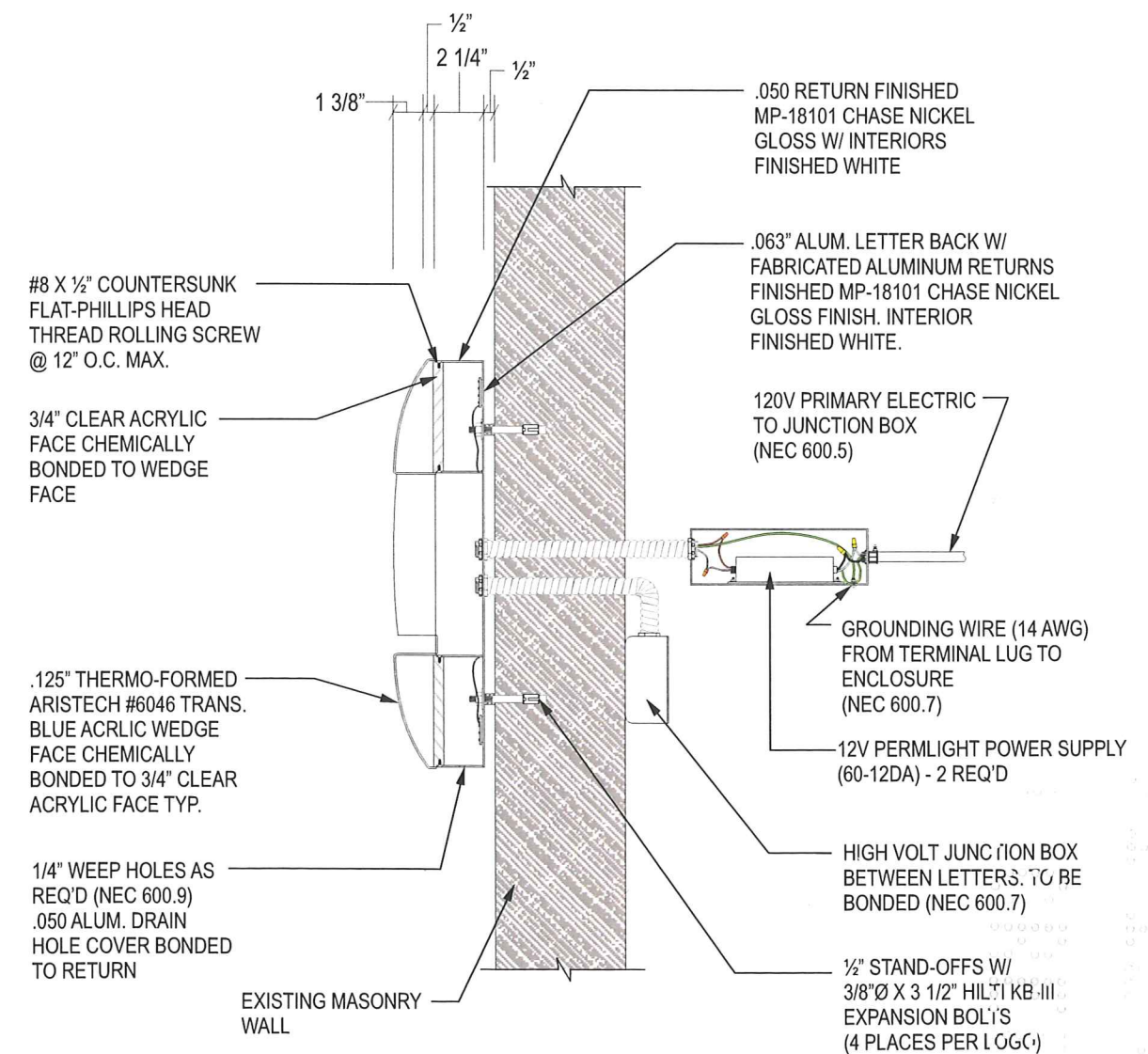
**CHANNEL LETTERS (BLACK LTRS / BLUE OCTAGON) LIF-BLK-14**

SCALE: 1/2" = 1'-0"



**SECTION DETAIL A-A**

SCALE: 1 1/2" = 1'-0"

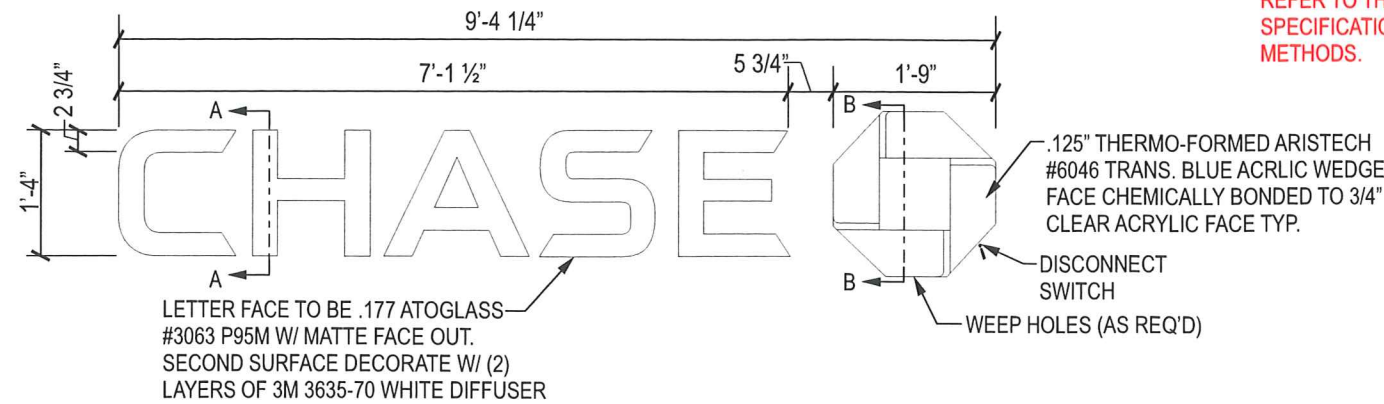


**SECTION DETAIL B-B**

SCALE: 1 1/2" = 1'-0"



THIS DRAWING IS INTENDED FOR SITE SPECIFIC MOUNTING AND INSTALLATION PURPOSES. REFER TO THE LATEST LINK ENGINEERING SPECIFICATIONS FOR SPECIFIC FABRICATION METHODS.



**GENERAL NOTES:**

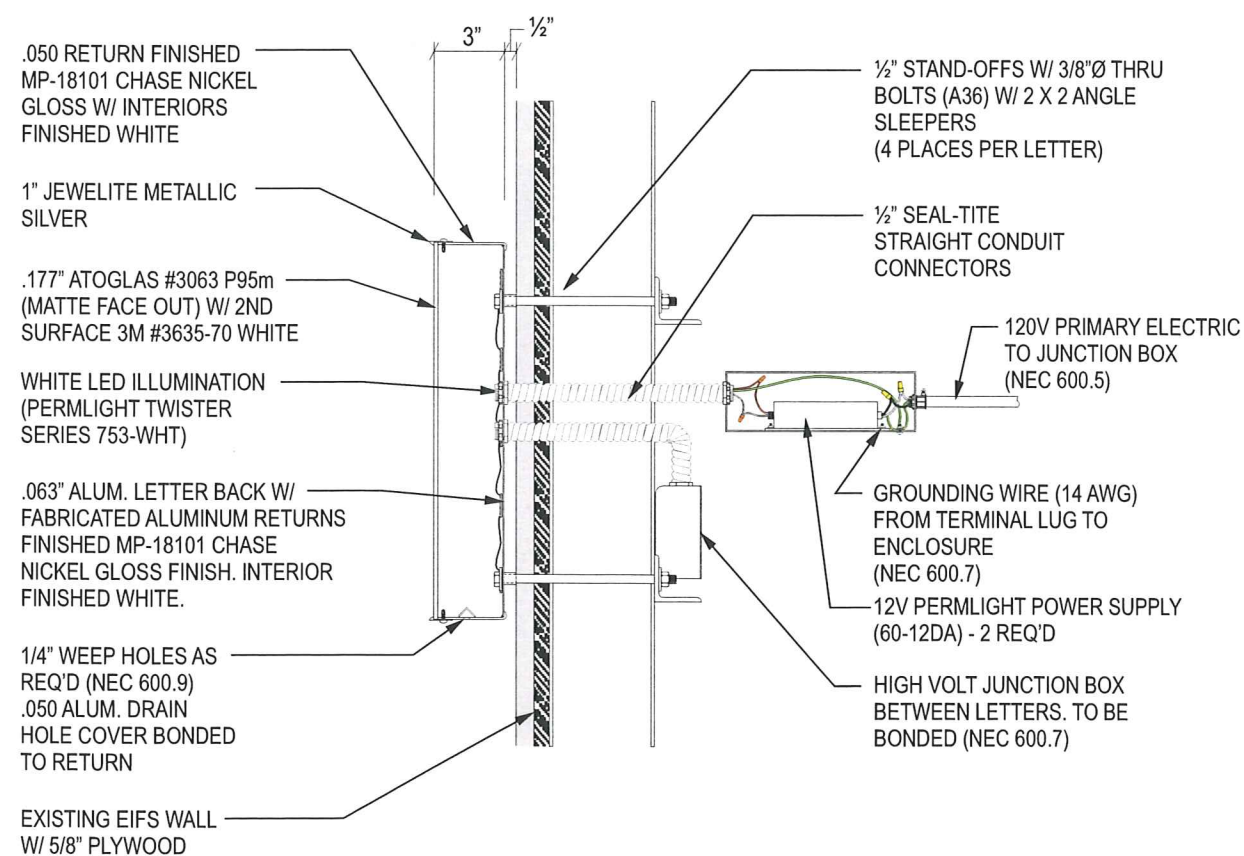
- U.L. LISTED - FILE NUMBER E157099
- ALL ELECTRICAL WORK SHALL BE PERFORMED IN ACCORDANCE WITH "NEC" REF. SECTION 600
- ALL ELECTRICAL SIGN SECTIONS TO HAVE U.L. LABEL IN ACCORDANCE WITH "NEC" 600.3 AND MANUFACTURERS LABEL LOCATED NEXT TO DISCONNECT SWITCH
- ALL NON-CURRENT CARRYING METAL PARTS OF SIGN SHALL BE GROUNDED & BONDED IN ACCORDANCE WITH "NEC" 250
- ALL WIRING CONTAINED IN ENCLOSED AREAS WITH LAMPS SHALL BE FIXTURE RATED
- SPlicing OF CONDUCTORS SHALL BE MADE IN JUNCTION BOXES OR SIMILAR METAL ENCLOSURES
- AT THE POINT THAT ELECTRICAL CABLE PASSES THRU THE SIGN BOX, IT SHALL PASS THRU A U.L. LISTED RUBBER GROMMET

BASIC WIND SPEED 140 MPH  
-3 SEC GUST WIND  
IMPORTANCE FACTOR: 1.0  
EXPOSURE B

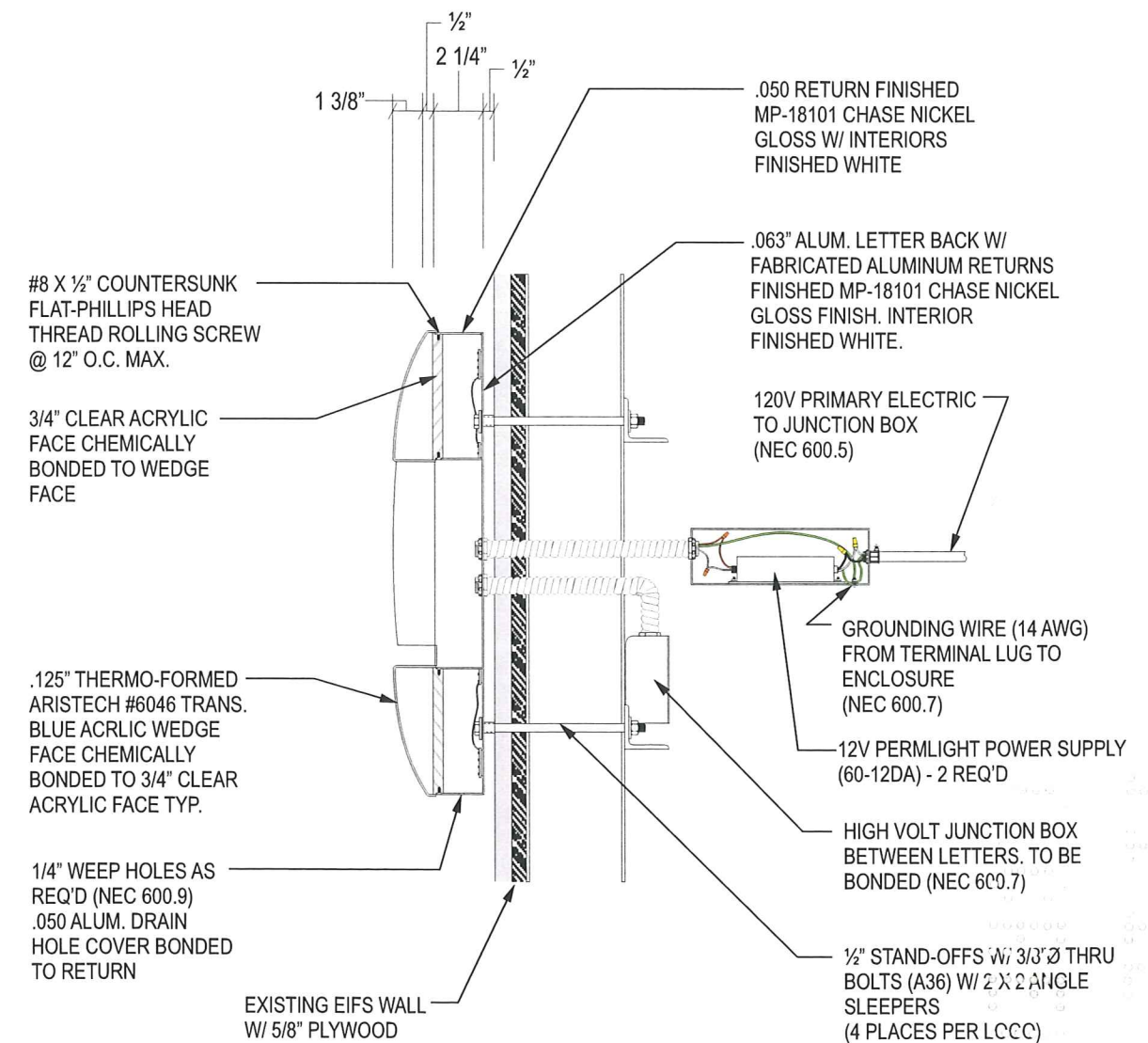
ESTIMATED SIGN WEIGHT  
-6 lbs. PER LETTER  
-11 lbs. PER LOGO

ESTIMATED ELECTRICAL LOAD  
1.3A @ 120VAC  
ESTIMATED ELECTRICAL REQUIREMENTS  
(1)20A circuit @ 120VAC

**CHANNEL LETTERS (BLACK LTRS / BLUE OCTAGON) LIF-BLK-16**  
SCALE: 1/2" = 1'-0"



**SECTION DETAIL A-A**  
SCALE: 1 1/2" = 1'-0"



**SECTION DETAIL B-B**  
SCALE: 1 1/2" = 1'-0"



THIS DRAWING IS INTENDED FOR SITE SPECIFIC MOUNTING AND INSTALLATION PURPOSES. REFER TO THE LATEST LINK ENGINEERING SPECIFICATIONS FOR SPECIFIC FABRICATION METHODS.

**GENERAL NOTES:**

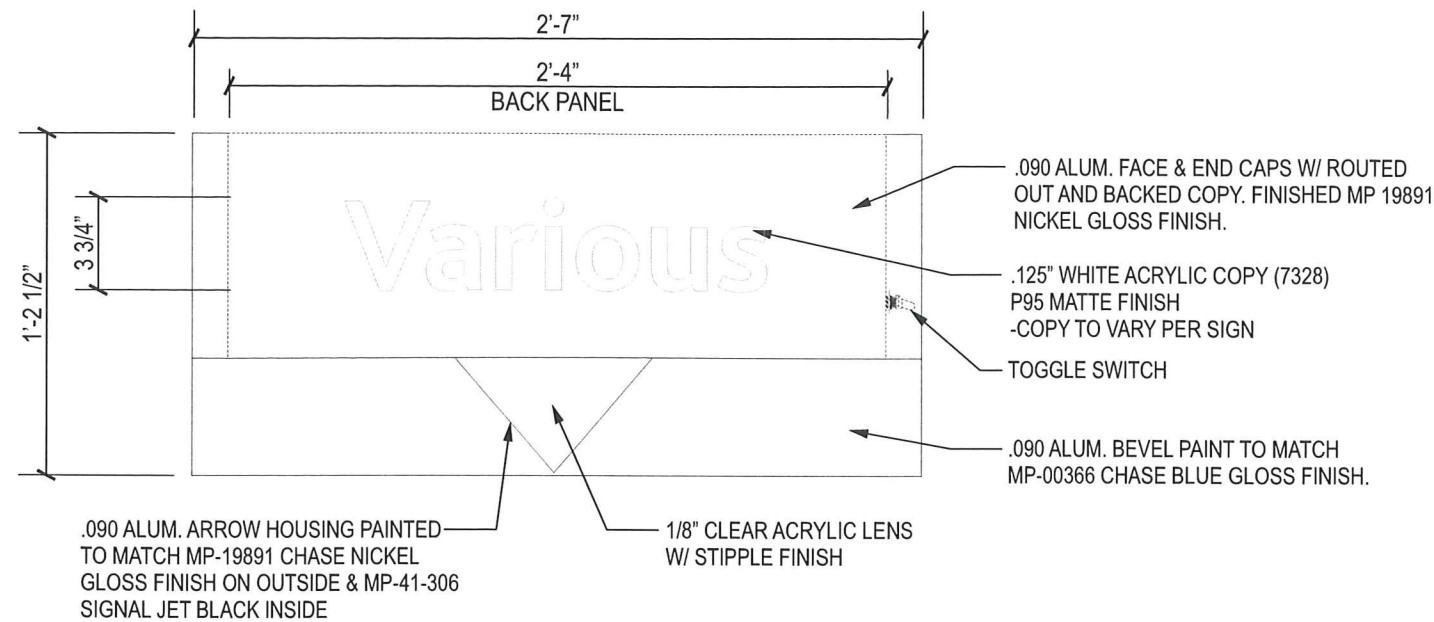
- U.L. LISTED - FILE NUMBER E157099
- ALL ELECTRICAL WORK SHALL BE PERFORMED IN ACCORDANCE WITH "NEC" REF. SECTION 600
- ALL ELECTRICAL SIGN SECTIONS TO HAVE U.L. LABEL IN ACCORDANCE WITH "NEC" 600.3 AND MANUFACTURERS LABEL LOCATED NEXT TO DISCONNECT SWITCH
- ALL NON-CURRENT CARRYING METAL PARTS OF SIGN SHALL BE GROUNDED & BONDED IN ACCORDANCE WITH "NEC" 250
- ALL WIRING CONTAINED IN ENCLOSED AREAS WITH LAMPS SHALL BE FIXTURE RATED
- SPlicing OF CONDUCTORS SHALL BE MADE IN JUNCTION BOXES OR SIMILAR METAL ENCLOSURES
- AT THE POINT THAT ELECTRICAL CABLE PASSES THRU THE SIGN BOX, IT SHALL PASS THRU A U.L. LISTED RUBBER GROMMET

BASIC WIND SPEED 140 MPH  
-3 SEC GUST WIND  
IMPORTANCE FACTOR: 1.0  
EXPOSURE B

ESTIMATED SIGN WEIGHT  
-30 lbs. PER DESIGNATOR

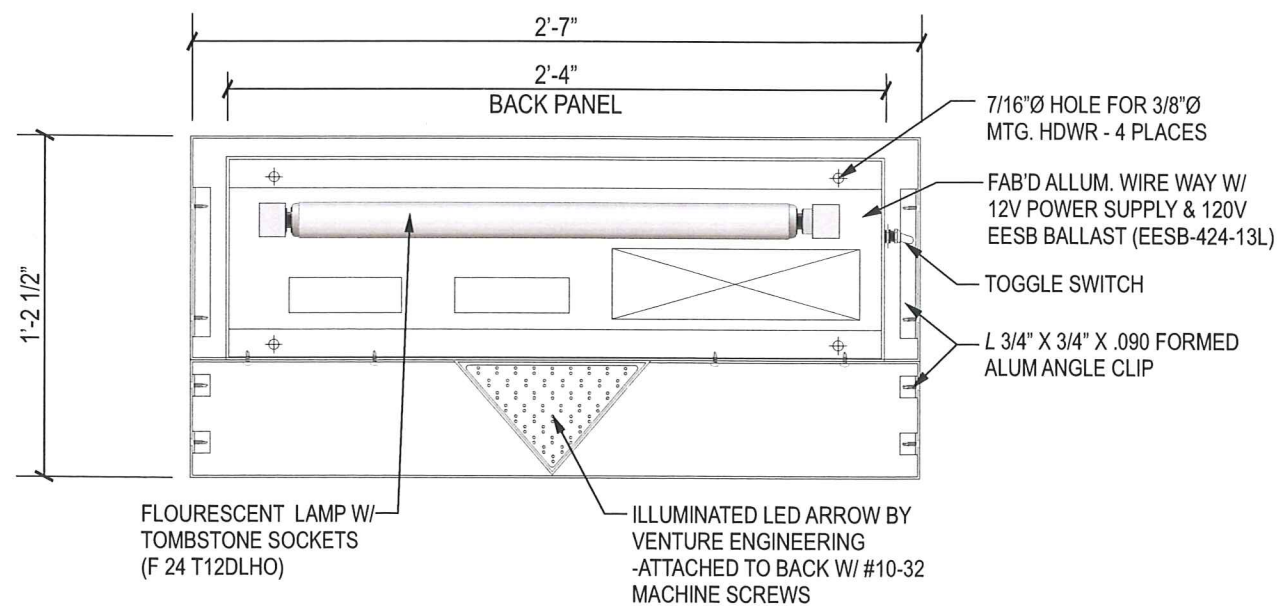
ESTIMATED ELECTRICAL LOAD  
1.1A @ 120VAC

ESTIMATED ELECTRICAL REQUIREMENTS  
(1)20A circuit @ 120VAC



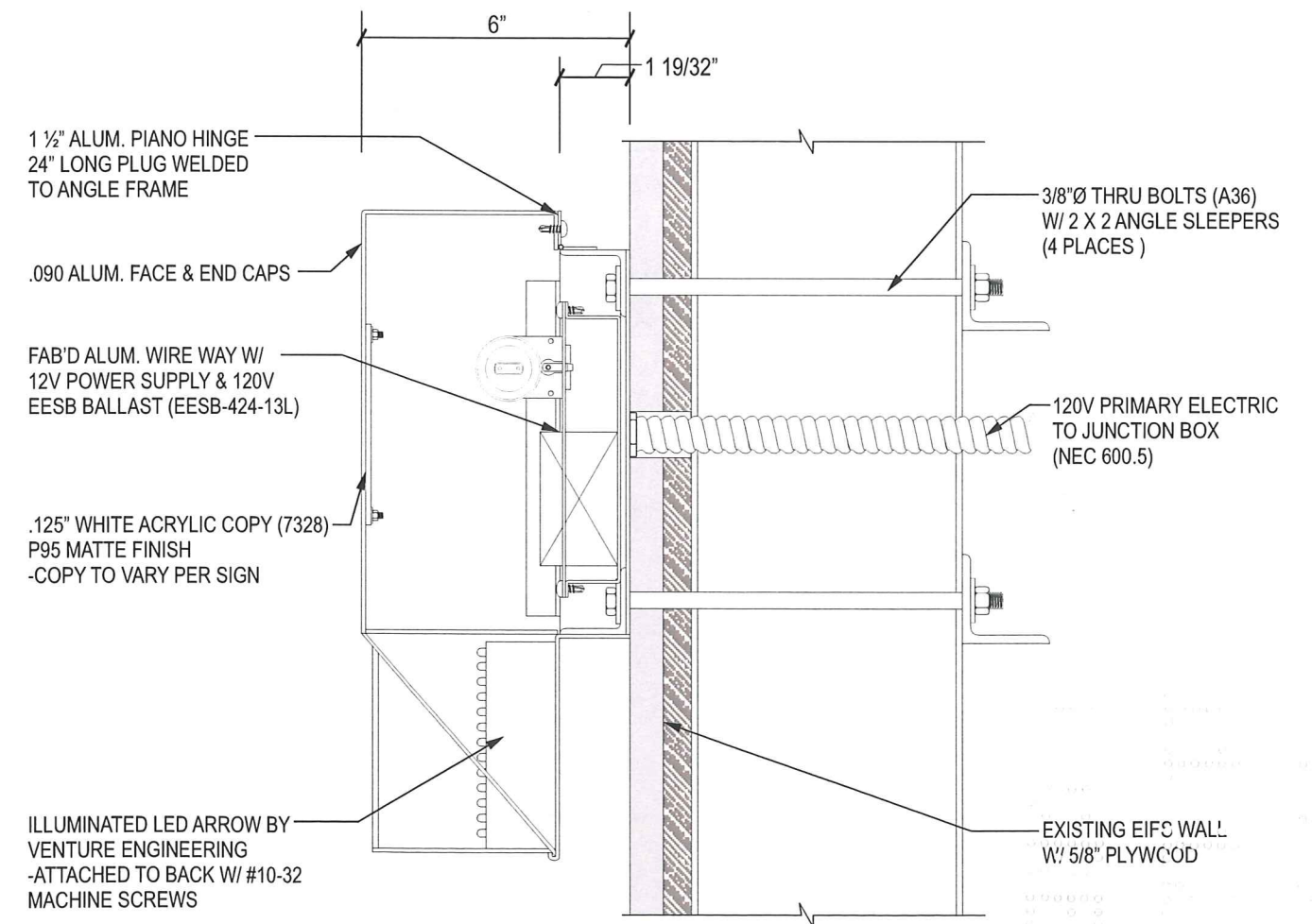
**LANE DESIGNATOR - FRONT ELEVATION**

SCALE: 1 1/2" = 1' 0"



**LANE DESIGNATOR / ILLUMINATION DETAIL**

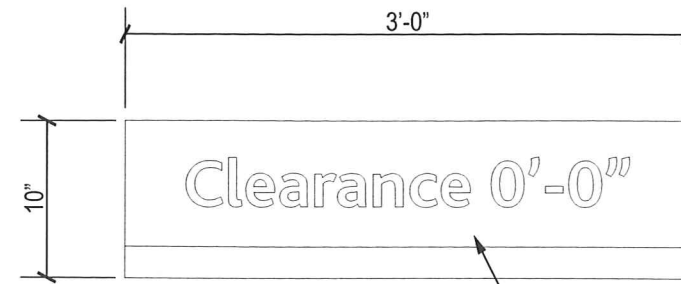
SCALE: 1 1/2" = 1' 0"



**MTG. DETAIL**

SCALE: 3" = 1' 0"



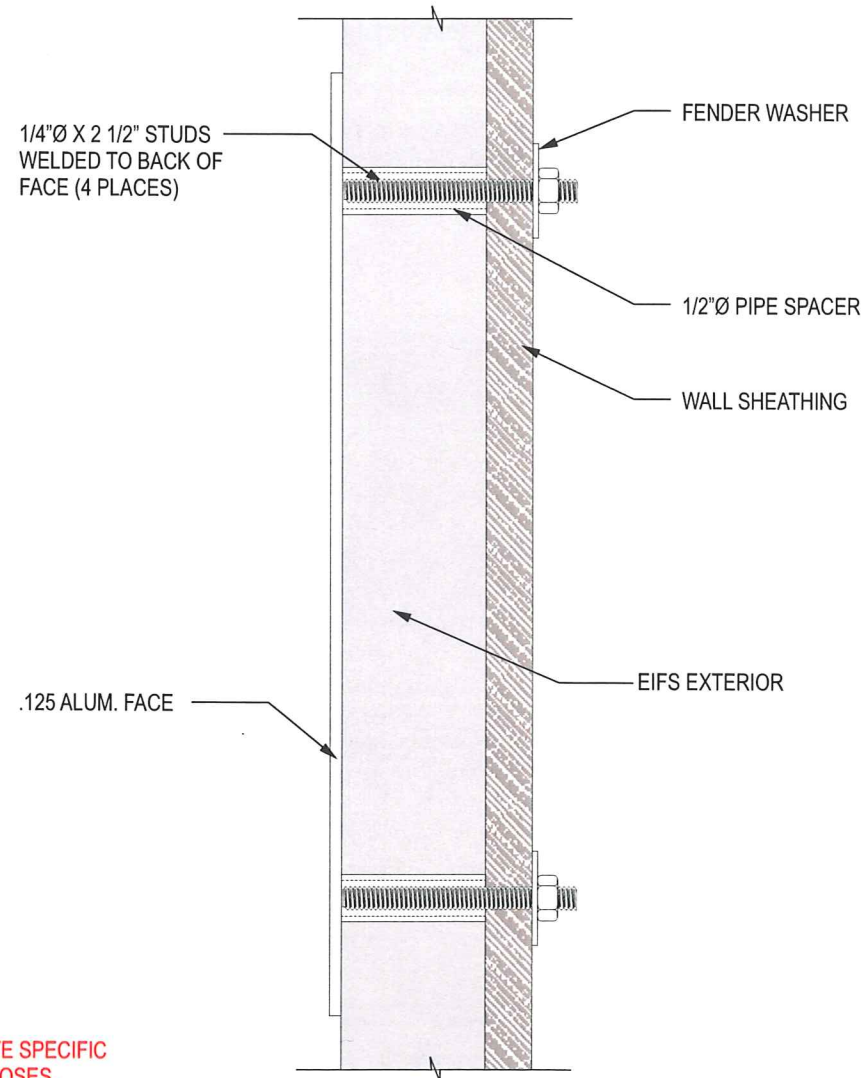


**TC-3-W / ELEVATION**  
SCALE: 1" = 1' 0"

.125 ALUM. FACE PAINTED TO MATCH SPECS W/ VINYL COPY

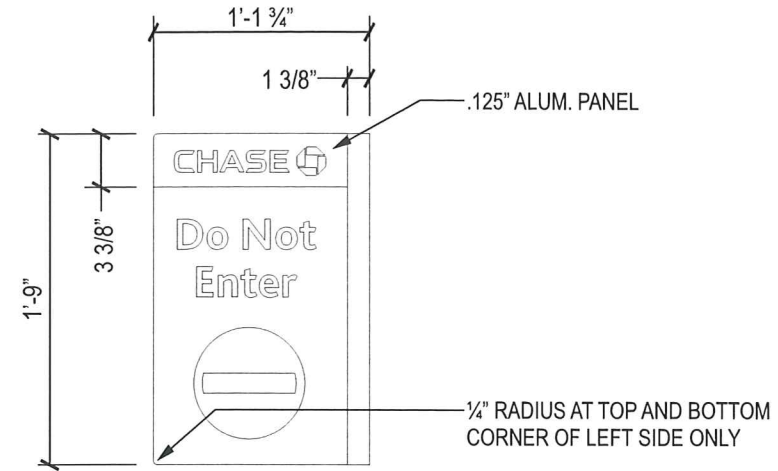
BASIC WIND SPEED 140 MPH  
-3 SEC GUST WIND  
IMPORTANCE FACTOR: 1.0  
EXPOSURE B

ESTIMATED SIGN WEIGHT  
-10 lbs. PER PLAQUE



**TC-3-W / SECTION**  
HALF SCALE

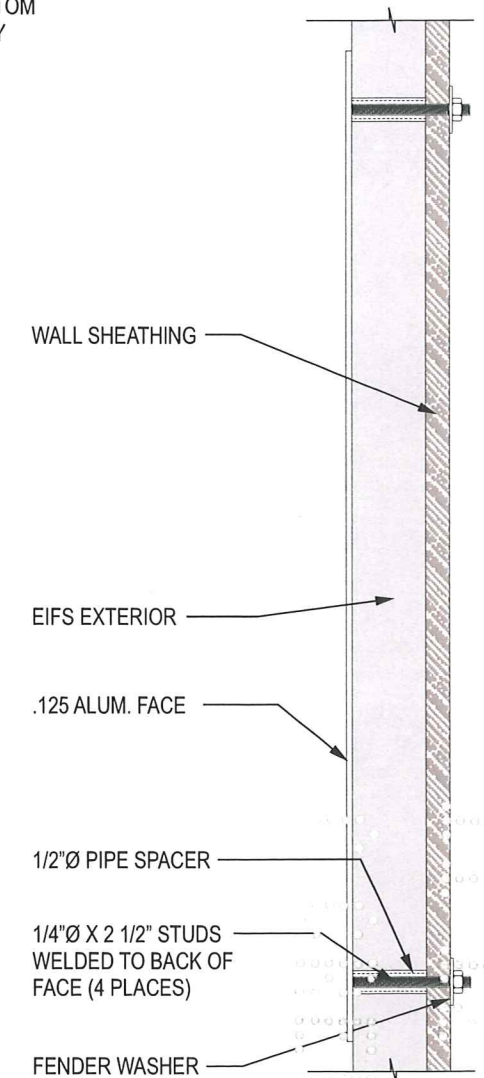
THIS DRAWING IS INTENDED FOR SITE SPECIFIC MOUNTING AND INSTALLATION PURPOSES. REFER TO THE LATEST LINK ENGINEERING SPECIFICATIONS FOR SPECIFIC FABRICATION METHODS.



**TC-W-H - ELEVATION**  
SCALE: 1"=1'-0"

BASIC WIND SPEED 140 MPH  
-3 SEC GUST WIND  
IMPORTANCE FACTOR: 1.0  
EXPOSURE B

ESTIMATED SIGN WEIGHT  
-10 lbs. PER PLAQUE



**TC-W-H - SECTION**  
SCALE: 3"=1'-0"

THIS DRAWING IS INTENDED FOR SITE SPECIFIC MOUNTING AND INSTALLATION PURPOSES. REFER TO THE LATEST LINK ENGINEERING SPECIFICATIONS FOR SPECIFIC FABRICATION METHODS.



THIS DRAWING IS INTENDED FOR SITE SPECIFIC MOUNTING AND INSTALLATION PURPOSES. REFER TO THE LATEST LINK ENGINEERING SPECIFICATIONS FOR SPECIFIC FABRICATION METHODS.

BASIC WIND SPEED 140 MPH  
IMPORTANCE FACTOR: 1.0  
EXPOSURE C

ESTIMATED SIGN WEIGHT  
-50 lbs. PER DIRECTIONAL

