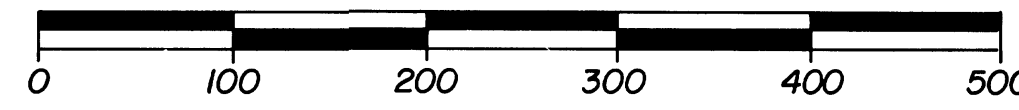


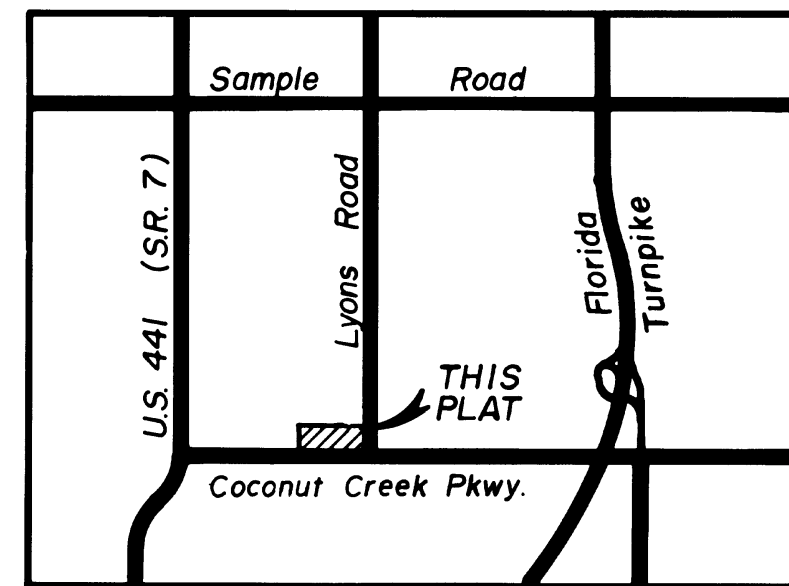
COCONUT CREEK PLAZA

A REPLAT OF A PORTION OF PALM BEACH FARMS COMPANY PLAT NO. 3 (P.B. 2, PG. 45-54, P.B.C.R.)
LYING AND BEING IN SECTION 30, TOWNSHIP 48 SOUTH, RANGE 42 EAST
CITY OF COCONUT CREEK COUNTY OF BROWARD STATE OF FLORIDA

Scale: 1" = 100'

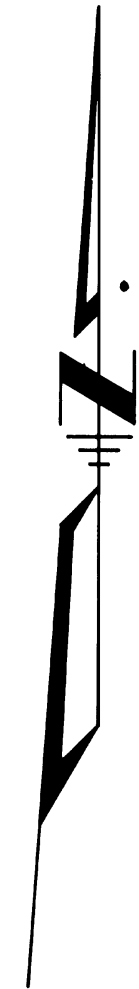


September, 1981

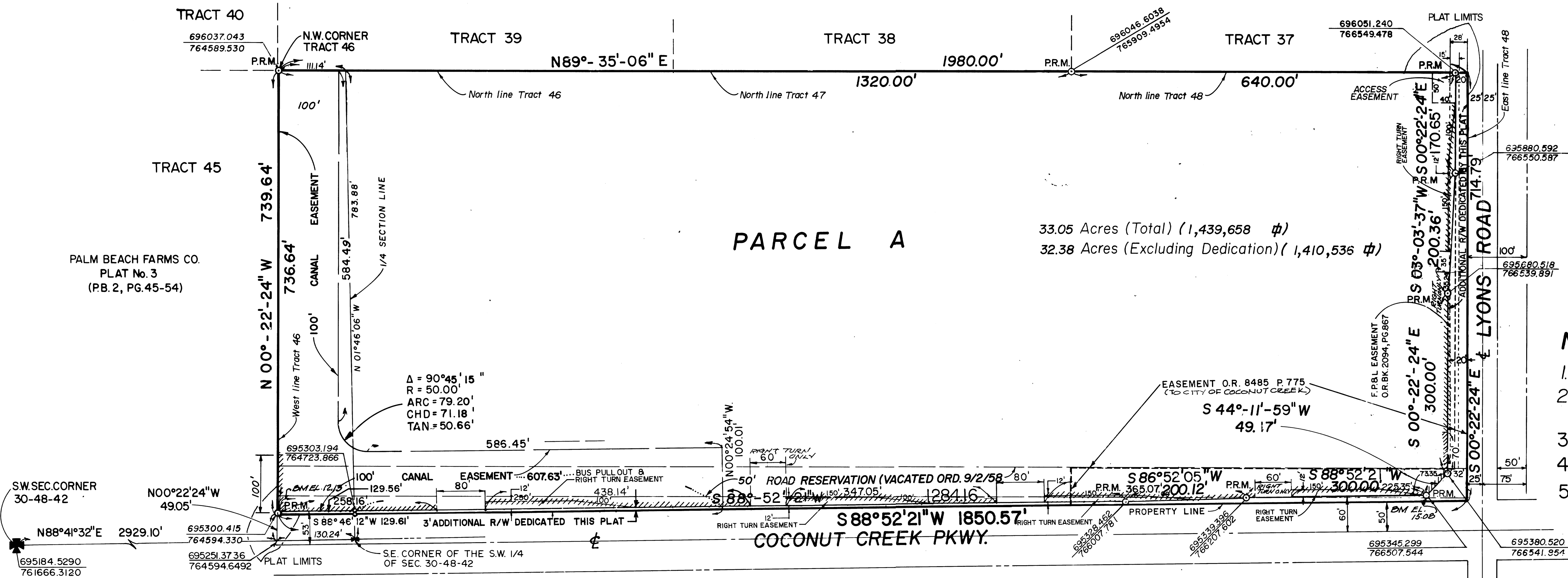


LOCATION MAP

N.T.S.



PALM BEACH FARMS CO. PLAT No. 3
(P.B. 2, PG. 45-54)



33.05 Acres (Total) (1,439,658 ϕ)
32.38 Acres (Excluding Dedication) (1,410,536 ϕ)

NOTES:

1. \odot Denotes Permanent Reference Monument.
2. Bearings refer to State Plane Coordinate - East Zone
3. Elevations refer to N.G.V.D. 1929
4. Non Vehicular Access
5. R/W dedicated by this plat = 29,122 s.f.

MID SOUTH ENGINEERING COMPANY

CONSULTING ENGINEERS & SURVEYORS

233 COMMERCIAL BLVD. LAUDERDALE - BY-THE-SEA, FT. LAUDERDALE, FLORIDA 33308