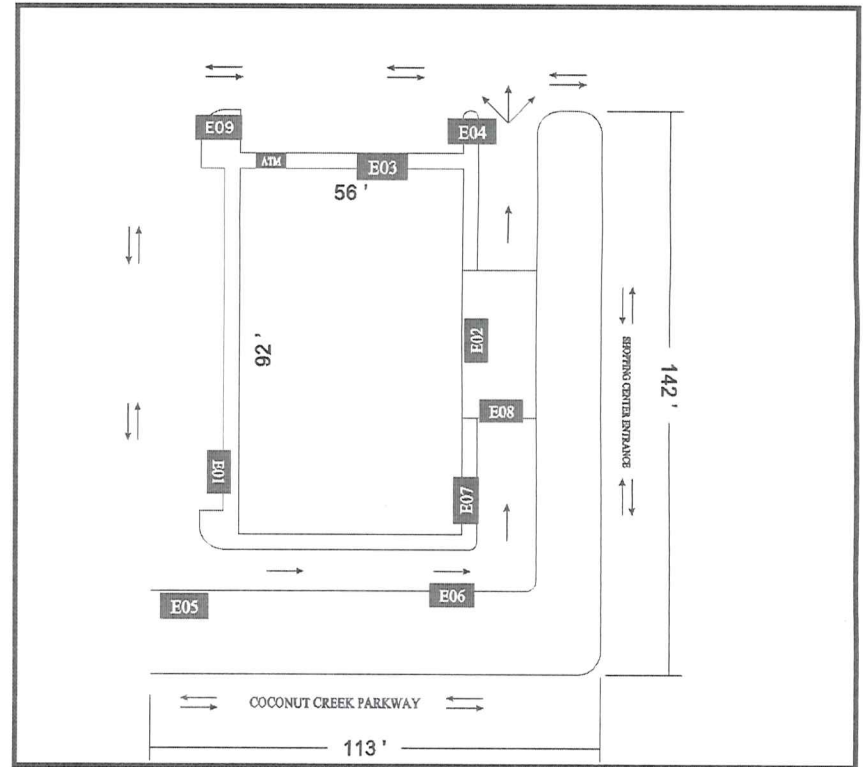


EXTERIOR SITE PLAN

Sign	Existing Sign	SF	Recommended Sign	SF	Qty.
E01	Wall Sign	4.58	CH-21-H	34.9	1
E02	DT Welcome		Remove Only		-
E03	Wall Sign	5.0	CHRW-12-H	11.4	1
E04	Directional		DOT Do Not Enter		1
E05	Directional		Custom DS-20-30		1
E06	Regulatory		Remove Only		1
E07	Regulatory		Remove Only		1
E08	Clearance Sign		Leave As Is		1
E09	DOT Sign		Refurbish		1



Sign	Bagging Required	Qty.	Sign	Bagging Required	Qty.
E01B	CH-21-H-BNR	1			
E03B	CH-12-H-BNR	1			
E04B	No Cling Required	-			
E05B	No Cling Required	-			



CORPORATE OFFICE:
837 Riverfront Dr., Suite 300, Sheboygan, WI 53081
PHONE: (920) 208-0896 FAX: (920) 208-0989

REGIONAL OFFICES:
Birmingham, AL • Bluffton-Hilton Head, SC
Chicago, IL • Los Angeles, CA • Knoxville, TN
Minneapolis-St. Paul, MN • Racine, WI

Project Manager: SS

Designer: RO

REVISIONS

	X
	X
	X
	X
	X

Drawing #

082047-ESP

PID # **082047**

Location: Coconut Creek, FL

Address: 4901 Coconut Creek Parkway

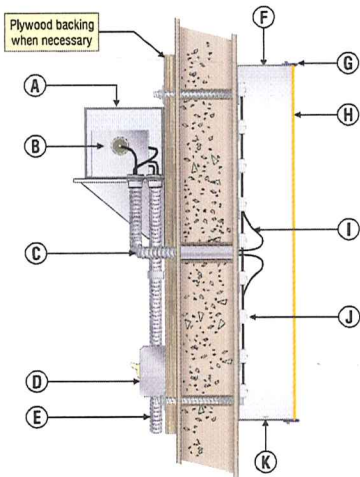
Date: 04/27/10

ArtDept\corel colors\wells largo

E01 Channel Letters (Horizontal) - CH-21-H (QTY 1)

Remove existing letters, patch and repaint fascia to match existing color. Install new remote wired illuminated letters. All specifications are listed below. Letters are flush mounted to wall surface.

SIGN CROSS SECTIONS



- A Power supply housing
- B Power supply Unit
- C 1/2" flexible conduit
- D listed disconnect switch
- E primary electrical source
- F letter return (see chart below)
- G face retainer (see chart below)
- H clear acrylic
- I supply wire
- J GE Tetra miniMAX Warm White
- K weep holes (2 per letter)



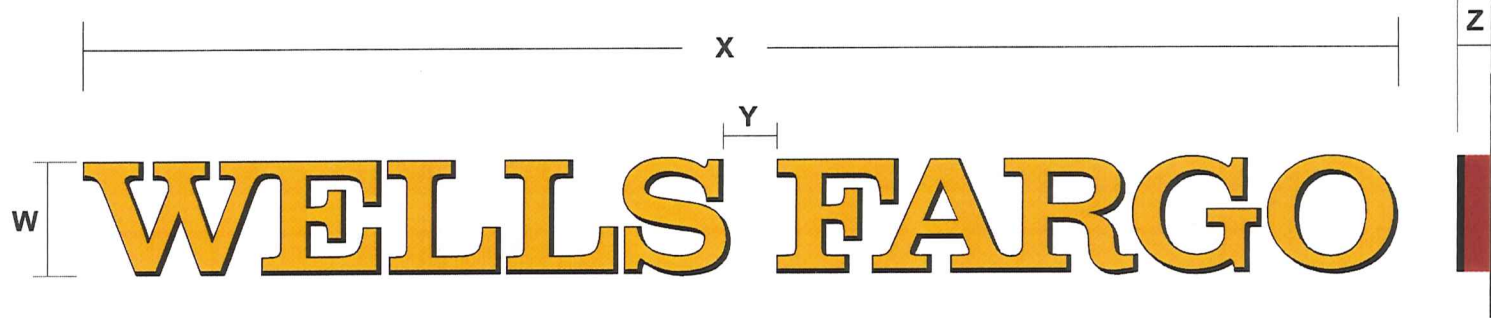
Letterset needs to be centered vertically on fascia and horizontally over the entrance doors

LTR. FACES:
 3M #3635-70
 White Diffuser Film (2nd Surface)
 3M #3630-4039
 Yellow Translucent Vinyl (1st Surface)
 3M #3630-22
 Black Vinyl Drop Shadow (1st Surface)



LTR. RETURNS:
 painted
 Matthews MP65837 R9666 Red
 with clearcoat, Semi-Gloss

GENERAL NOTES:
 All lighting elements to be non-viable, including transformers.
 Acrylic faces attached to trim caps using LORD 7542a adhesive, or approved equal with comparable VOC characteristics.
 Letters from 10' - 3'-6" have backs mechanically fastened to returns.
 Letters from 4'-0" and above have backs welded to returns.
 All electrical to be UL Listed and labeled.
 Power supply wiring to be compliant to UL48 and NEC.
 Letters from 4'-0" and above (High Rise Conditions) require additional galvanized steel mounting clips.
 All visible mechanical fasteners going thru the trim cap must be painted black.



Letter Faces	Letter Backs	Letter Returns	Face Retainer	Ltr. Illumination	Model #	W	X	Y	Z	SF
.177" Clear Acrylic	(.063") Maxxrite High Reflective White	(.040") Maxxrite Alum. Sheeting w/High Reflective White Interior	Jewel-ite Trim Cap 1" Black	GE Tetra miniMAX, GEWWMMSS-50K	CH-21-H	1'-9"	19'-11 5/8"	9 3/4"	5"	34.9



CORPORATE OFFICE:
 837 Riverfront Dr., Suite 300, Sheboygan, WI 53081
 PHONE: (920) 208-0896 FAX: (920) 208-0969

REGIONAL OFFICES:
 Birmingham, AL • Bluffton-Hilton Head, SC
 Chicago, IL • Los Angeles, CA • Knoxville, TN
 Minneapolis-St. Paul, MN • Racine, WI

Project Manager: SS Designer: RO

Staging panel removed because of city code restrictions. 10.07.10
 Revised to a CHRW-21-H per direction from CBRE 10.18.10

REVISIONS

	X
	X
	X

Drawing #
082047-E01

PID # **082047**

Location: **Coconut Creek, FL**

Address: **4901 Coconut Creek Parkway**

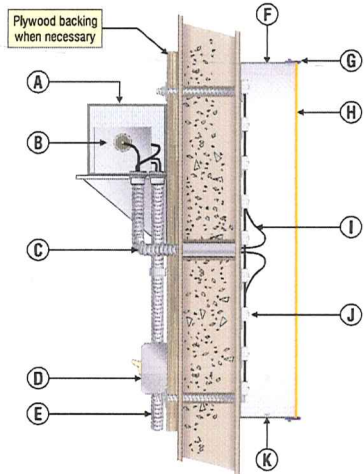
Date: **04/27/10**

ArtDept\corel colors/wells fargo

E03 Channel Letters (Horizontal) - CH-12-H (QTY 1)

Remove existing letters, patch and repaint fascia to match existing color. Install new remote wired illuminated letters. All specifications are listed below. Letters are flush mounted to wall surface. **Per city the secondary sign to be 12 sf maximum.**

SIGN CROSS SECTIONS



- A Power supply housing
- B Power supply Unit
- C 1/2" flexible conduit
- D listed disconnect switch
- E primary electrical source
- F letter return (see chart below)
- G face retainer (see chart below)
- H clear acrylic
- I supply wire
- J GE Tetra miniMAX Warm White
- K weep holes (2 per letter)

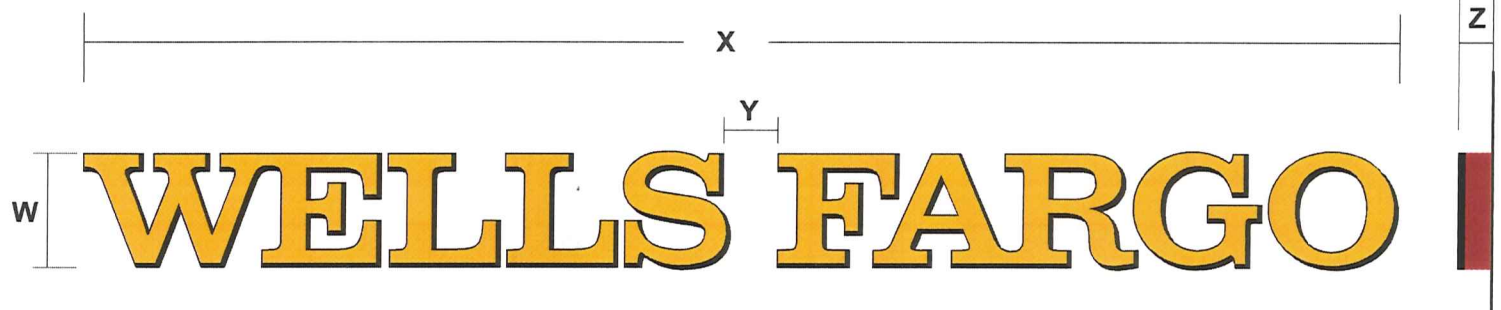
LTR. FACES:
 3M #3635-70
 White Diffuser Film (2nd Surface)
 3M #3630-4039
 Yellow Translucent Vinyl (1st Surface)
 3M #3630-22
 Black Vinyl Drop Shadow (1st Surface)



LTR. RETURNS:
 painted
 Matthews MP65837 R9666 Red
 with clearcoat, Semi-Gloss

Sign to be centered equally on fascia band area.

GENERAL NOTES:
 All lighting elements to be non-visible, including transformers.
 Acrylic faces attached to trim caps using LORD 7542a adhesive, or approved equal with comparable VOC characteristics.
 Letters from 10" - 3'-0" have backs mechanically fastened to returns.
 Letters from 4'-0" and above have backs welded to returns.
 All electrical to be UL Listed and labeled.
 Power supply wiring to be compliant to UL48 and NEC.
 Letters from 4'-0" and above (High Rise Conditions) require additional galvanized steel mounting clips.
 All visible mechanical fasteners going thru the trim cap must be painted black.



Letter Faces	Letter Backs	Letter Returns	Face Retainer	Ltr. Illumination	Model #	W	X	Y	Z	SF
.177" Clear Acrylic	.063" Maxxrite High Reflective White	.040" Maxxrite Alum. Sheeting w/High Reflective White Interior	Jewel-Hite Trim Cap 3/4" Black	GE Tetra miniMAX, GEWWMMSS-50K	CH-12-H	1'-0"	11'-4 15/16"	5 9/16"	5"	11.4



CORPORATE OFFICE:
 837 Riverfront Dr., Suite 300, Sheboygan, WI 53081
 PHONE: (920) 208-0896 FAX: (920) 208-0969

REGIONAL OFFICES:
 Birmingham, AL • Bluffton-Hilton Head, SC
 Chicago, IL • Los Angeles, CA • Knoxville, TN
 Minneapolis-St. Paul, MN • Racine, WI

Project Manager: SS Designer: RO

REVISIONS

Staging panel removed because of city code restrictions. 10.07.10	X
Revised to a CHRW-21-H per direction from CBRE 10.18.10	X
Reduced to a 12" letterset per city code 1.18.11	X

Drawing #
082047-E03

PID # **082047**

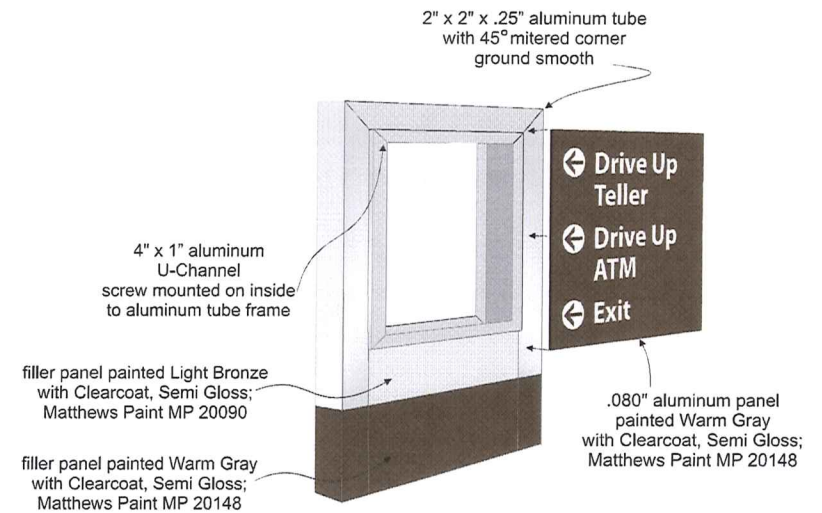
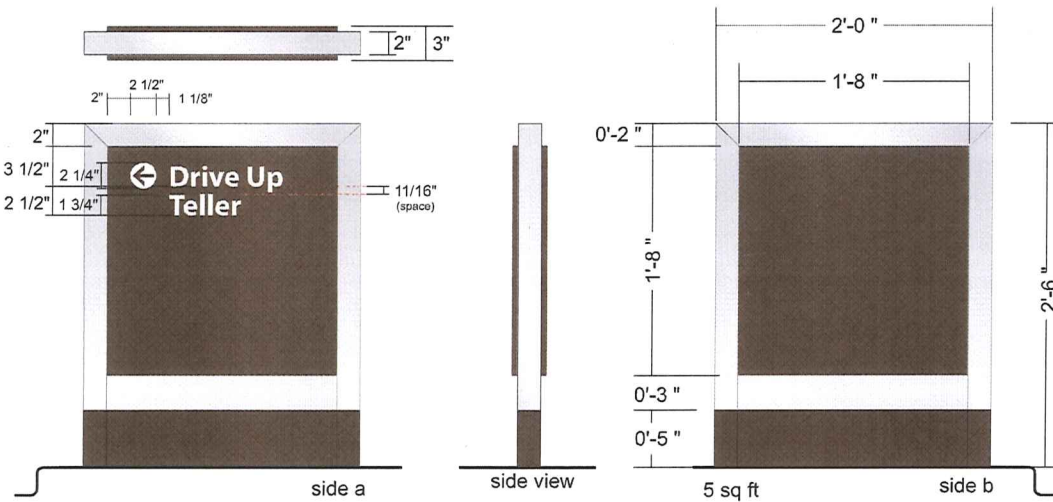
Location: Coconut Creek, FL
 Address: 4901 Coconut Creek Parkway
 Date: 04/27/10
 ArtDept: corel colors/wells fargo

E05 Custom DS-20-30 - (Qty 1)

Remove existing directional and install new directional sign. Aluminum support tube to be painted Light Bronze with Clearcoat, Semi-Gloss.
Option 1: Matthews Paint MP 20090. *Option 2:* Akzo Nobel SIGN90722.
 Panels to be .080" aluminum decorated with 3M #180-10 Opaque White copy and arrows. Refer to breakdown for panel and lower section of support tube colors. **Plate connection required to concrete.**



Sign Face Sq. Footage = 4.2'



Exploded Construction Detail

Scale: 1:16



CORPORATE OFFICE:
 837 Riverfront Dr., Suite 300, Sheboygan, WI 53081
 PHONE: (920) 208-0896 FAX: (920) 208-0969

REGIONAL OFFICES:
 Birmingham, AL • Bluffton-Hilton Head, SC
 Chicago, IL • Los Angeles, CA • Knoxville, TN
 Minneapolis-St. Paul, MN • Racine, WI

Project Manager: SS

Designer: RO

Drawing #

082047-E05

Location: Coconut Creek, FL

Address: 4901 Coconut Creek Parkway

Date: 04/27/10

ArtDept\corel colors\wells fargo

REVISIONS

Revised footing per design intent (6) 8-5-10	X
City requires that directional signs have a full base 10.07.10	X
Reduced to a 5 sf directional per city code, 1/18/11	X

PID # **082047**