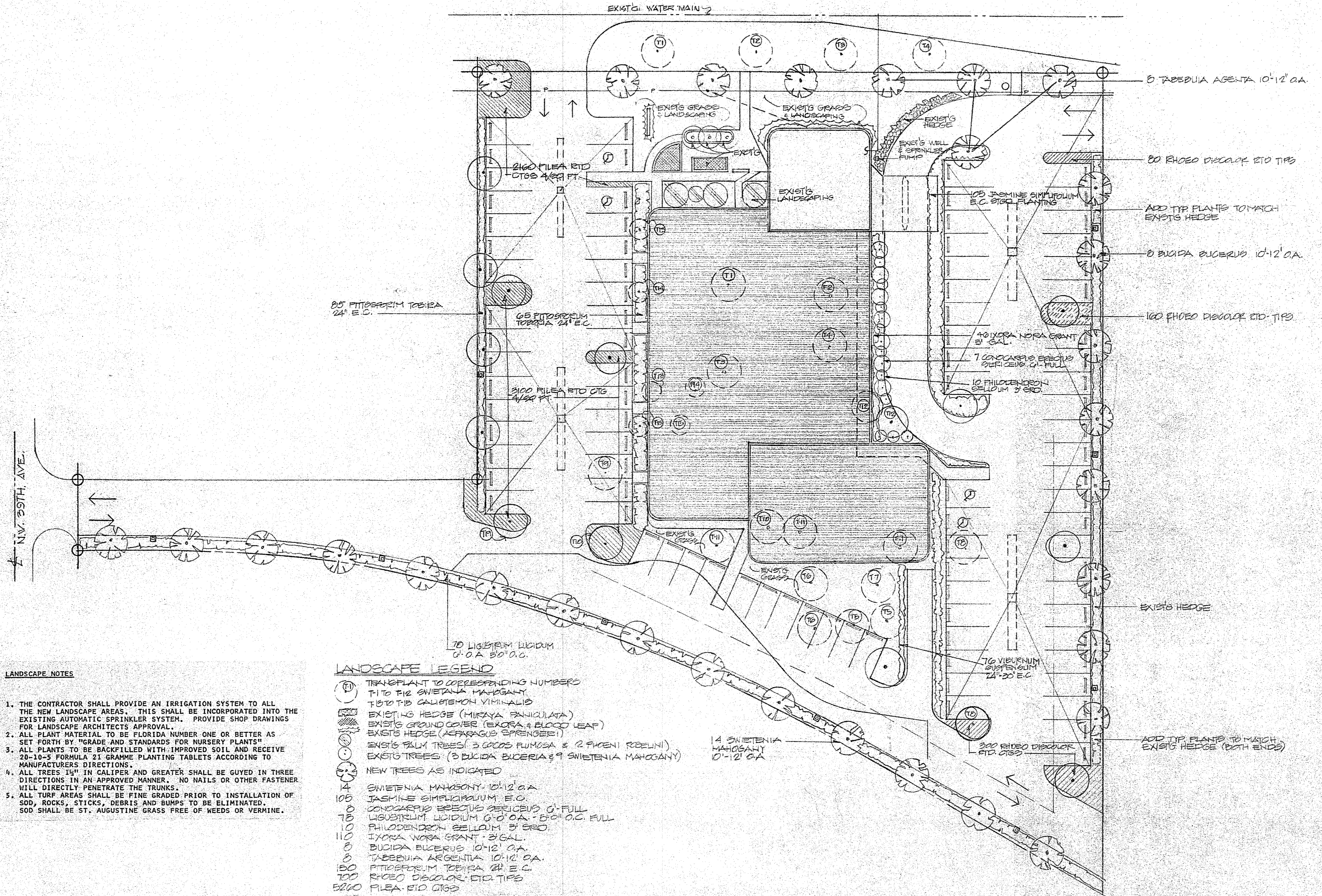


COCONUT CREEK PARKWAY (RIGHT OF WAY LANDSCAPE IMPROVEMENT & MAHOGANY TREES)



- LANDSCAPE NOTES**
1. THE CONTRACTOR SHALL PROVIDE AN IRRIGATION SYSTEM TO ALL THE NEW LANDSCAPE AREAS. THIS SHALL BE INCORPORATED INTO THE EXISTING AUTOMATIC SPRINKLER SYSTEM. PROVIDE SHOP DRAWINGS FOR LANDSCAPE ARCHITECTS APPROVAL.
 2. ALL PLANT MATERIAL TO BE FLORIDA NUMBER ONE OR BETTER AS SET FORTH BY "GRADE AND STANDARDS FOR NURSERY PLANTS"
 3. ALL PLANTS TO BE BACKFILLED WITH IMPROVED SOIL AND RECEIVE 20-10-5 FORMULA 21 GRAMME PLANTING TABLETS ACCORDING TO MANUFACTURERS DIRECTIONS.
 4. ALL TREES 1 1/2" IN CALIPER AND GREATER SHALL BE GUYED IN THREE DIRECTIONS IN AN APPROVED MANNER. NO NAILS OR OTHER FASTENER WILL DIRECTLY PENETRATE THE TRUNKS.
 5. ALL TURF AREAS SHALL BE FINE GRADED PRIOR TO INSTALLATION OF SOD, ROCKS, STICKS, DEBRIS AND BUMPS TO BE ELIMINATED. SOD SHALL BE ST. AUGUSTINE GRASS FREE OF WEEDS OR VERMINE.

LANDSCAPE LEGEND

(T1) TRANSPLANT TO CORRESPONDING NUMBERS
 T1 TO T12 SWIETENIA MAHOGANY
 T13 TO T19 CALISTEMON VIMINALIS

(H) EXISTING HEDGE (MURAYA PANICULATA)

(G) EXIST'G GROUND COVER (EXORA & BLOOD LEAF)

(S) EXIST'G HEDGE (ACAPAGUS SPRENGERI)

(B) EXIST'G BLM TREES (3 COCOS PUMOSA & 2 FICUS ROBINII)

(T) EXIST'G TREES (3 BUCIDA BUCERUS & 9 SWIETENIA MAHOGANY)

(N) NEW TREES AS INDICATED

14 SWIETENIA MAHOGANY 10'-12' O.A.

105 JASMINE SIMPLICIFOLIUM E.C.

0 CONDORCYPUS ERECTUS 0'-FULL

70 LIQUISTRUM LUCIDUM 6'-0" O.A. 50" O.C. FULL

10 PHILODENDRON BELLUM 3' 5" 5"

110 IXORA NORA GRANT 21 GAL.

8 BUCIDA BUCERUS 10'-12' O.A.

8 TABEBUIA ARGENTEA 10'-12' O.A.

150 PITOSPORUM TORBIA 24" E.C.

100 RHODO DISCOLOR 120 TIP

5200 FILEA RTD CTGS

ALL PLANT BED COVERED W/ CYPRESS BARK MULCH (MIN 2")

landscape plan 1"=20'-0"

