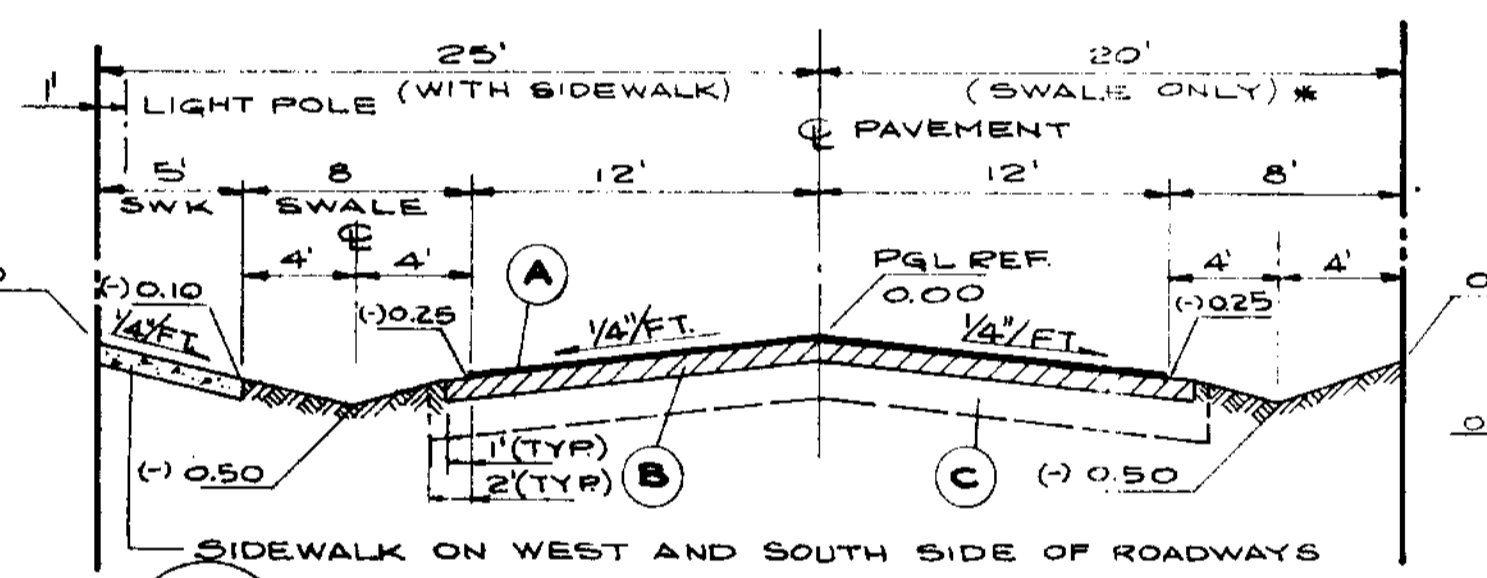
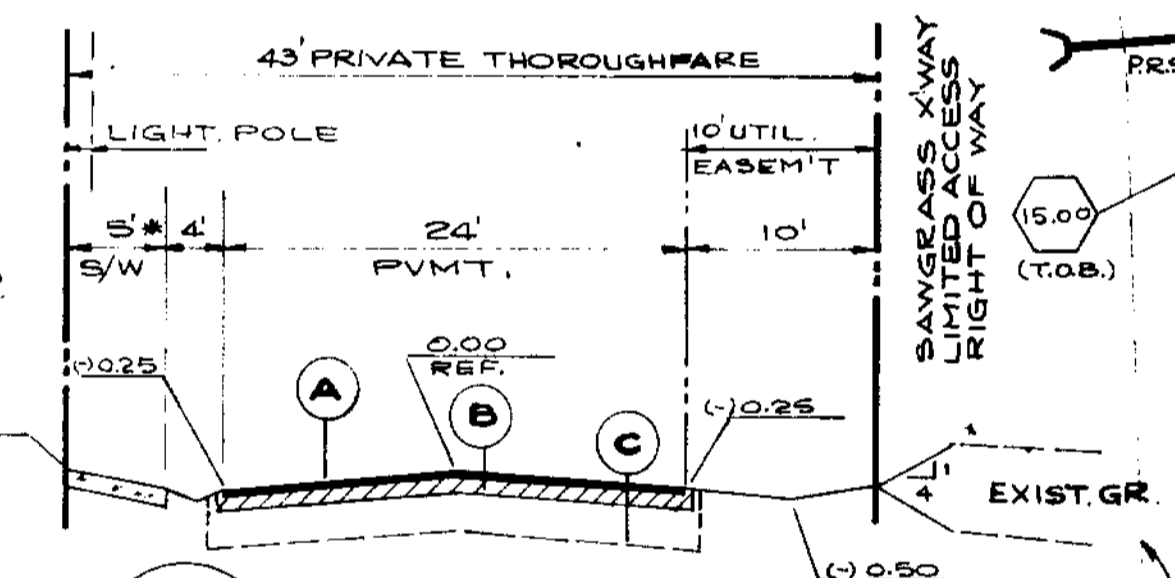


- LEGEND**
- (15.30) SPOT ELEVATION (NEW)
 - (14.30) EXISTING ELEVATION
 - ▨ SIDEWALK LOCATION
 - ★ LIGHT POLE LOCATION (SEE NOTE 1)
 - NEW INLET AND STORM DRAINAGE PIPE, ENDWALL
 - EXIST STORM INLET AND PIPE
 - PRS POLLUTION RETARDANT STR.
 - DBI DITCH BOTTOM INLET.
 - ⤴ EDGE OF VEGETATION.

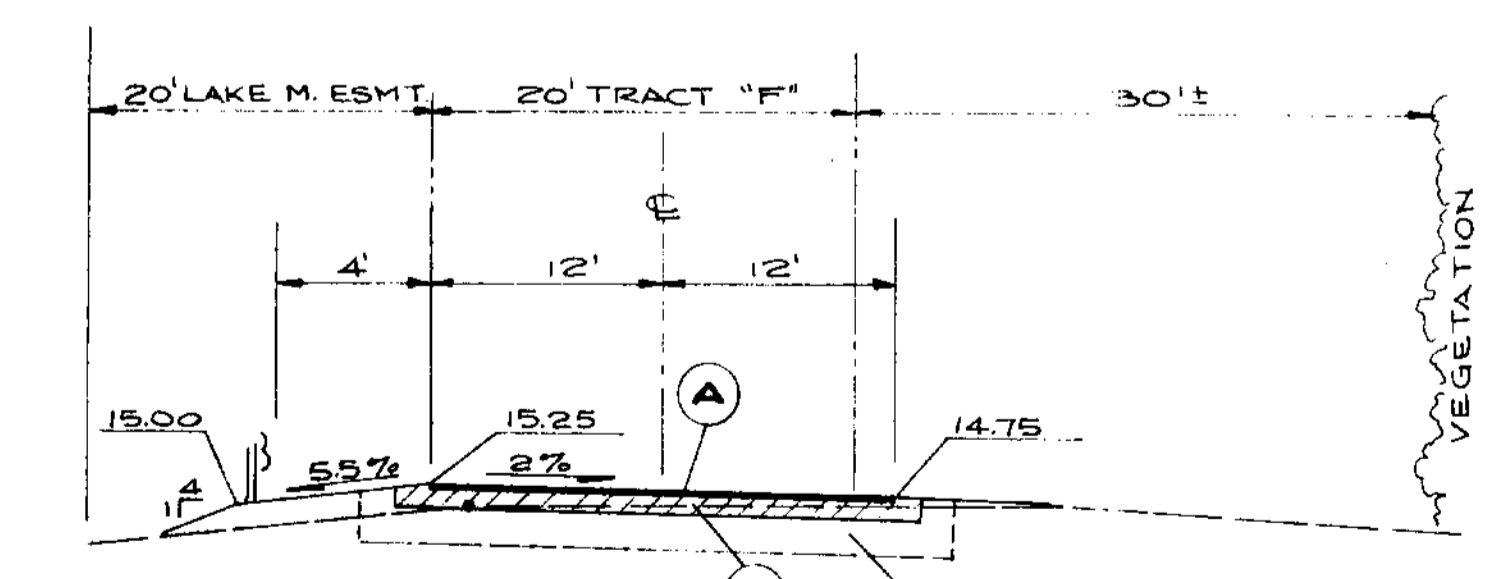


A TYPICAL SECTION 45' PRIVATE ROAD
N.T.S.

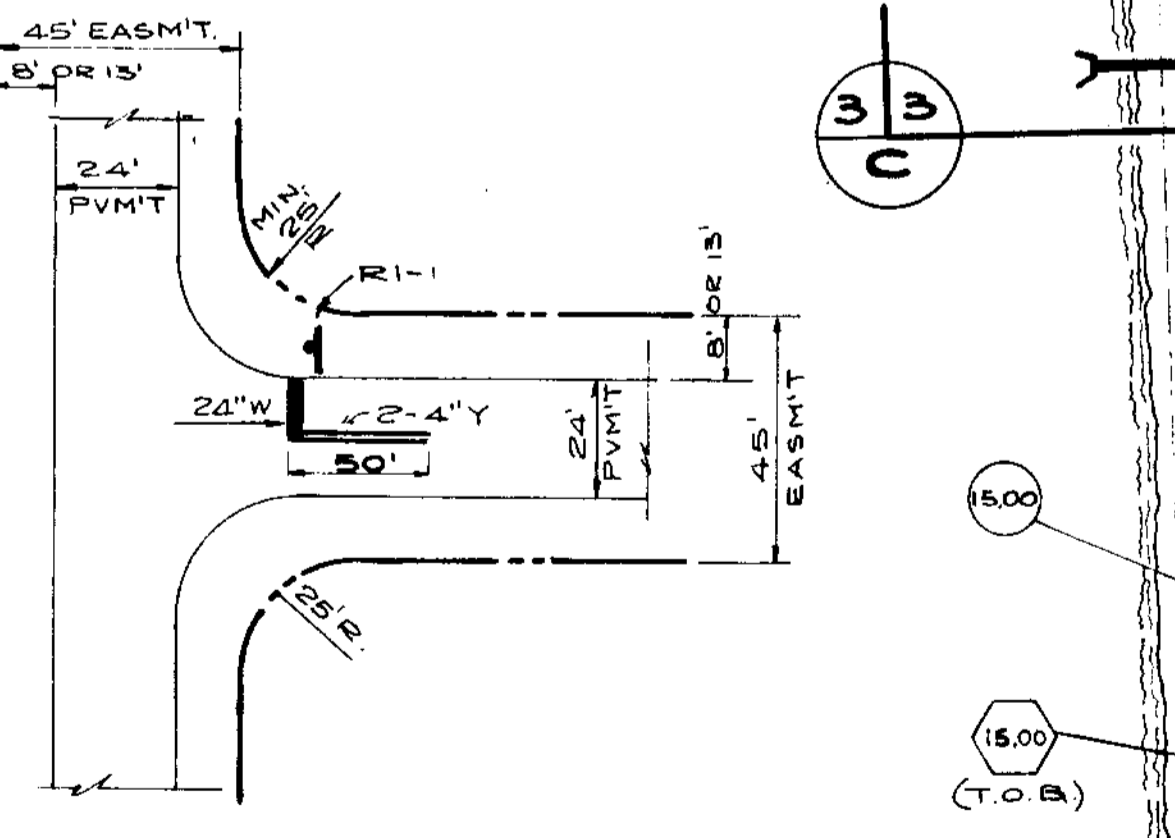


B FRONTAGE ROAD
N.T.S.

- NOTES:**
- 1- SEE SITE PLAN FOR SIDEWALK LOCATIONS
 - 2- LOCATIONS FOR DENSITY TEST SHALL BE DIRECTED BY CITY ENGINEER.
- (A) 1/2" THICK TYPE S-1 ASPHALTIC CONCRETE SURFACE COURSE
 - (B) 8" THICK No. 2 LIMEROCK BASE PRIMED AND COMPACTED TO 98% MAX. DENSITY (AASHTO T-162)
 - (C) 12" SUBGRADE, COMPACTED TO 98% MAX. DENSITY (AASHTO T-80)
- * EASEMENT SHALL BE 60' WHERE PLANS CALL FOR SIDEWALKS ON BOTH SIDES.



C ENTRANCE ROAD
N.T.S.



TYPICAL INTERSECTION DETAIL
N.T.S.

- NOTES:**
- 1 LIGHT POLE LOCATIONS ARE TENTATIVE. ACTUAL NUMBER AND LOCATIONS SHALL BE DETERMINED BY FLORIDA POWER & LIGHT CO.
 - 2 MINIMUM ROAD LONGITUDINAL SLOPE IS 0.004% FT/FT
 - 3 FINISHED FLOOR ELEVATIONS SHALL BE 15 FEET OVER HIGHEST ADJACENT ROADWAY CROWN, OR ELEVATION 16.00, WHICHEVER IS HIGHER.
 - 4 ALL ELEVATIONS REFER TO NGVD, 1929 MSL.
 - 5 EXISTING WINSTON PARK BLVD. ELEVATIONS TAKEN FROM KEITH & SCHNARS, PLANS REVISED 7/30/87
 - 6 MINIMUM ROADWAY CROWN EL. 14.00
 - 7 STRIPING SHALL BE THERMOPLASTIC.

DESIGNED: SW							
DRAWN: M.C.C.							
CHECKED: RL							
NO.	DATE	APP.	REVISION	NO.	DATE	APP.	REVISION

LUDOVICI & ORANGE
CONSULTING ENGINEERS INC.
333 PALERMO AVENUE, CORAL GABLES, FLORIDA 33134

WINSTON PARK
JOSHUA MUSS AND ASSOCIATES

TRACT "F"
PRELIMINARY GRADING & DRAINAGE PLAN

SCALE: 1"=60'
DATE: 9-1-87
PROJECT NO. 8431 G
SHEET 3 OF 5