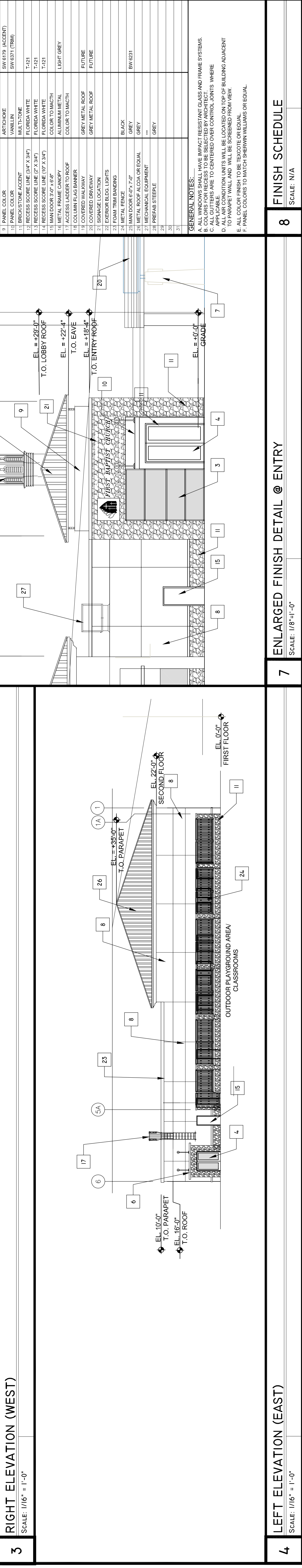
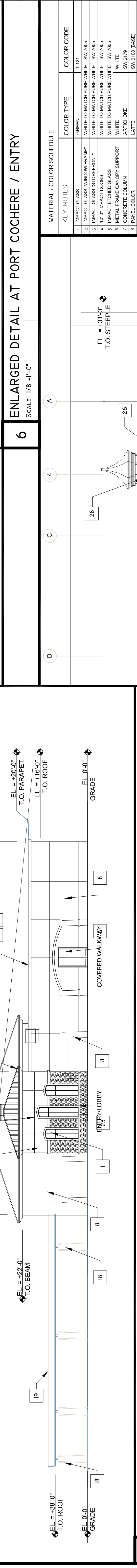
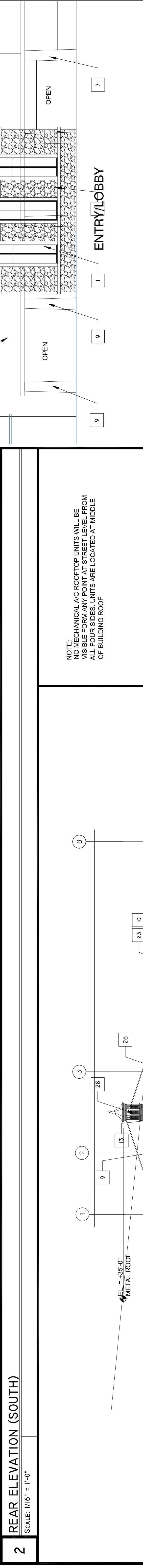
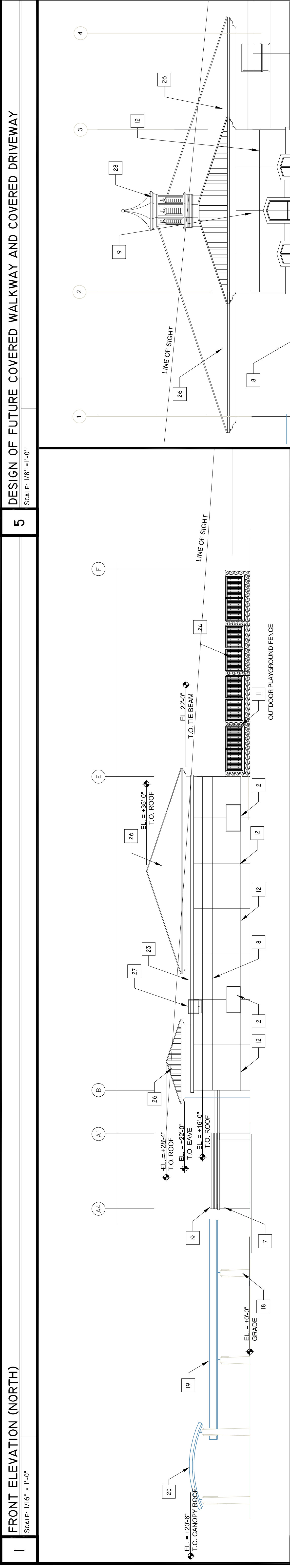
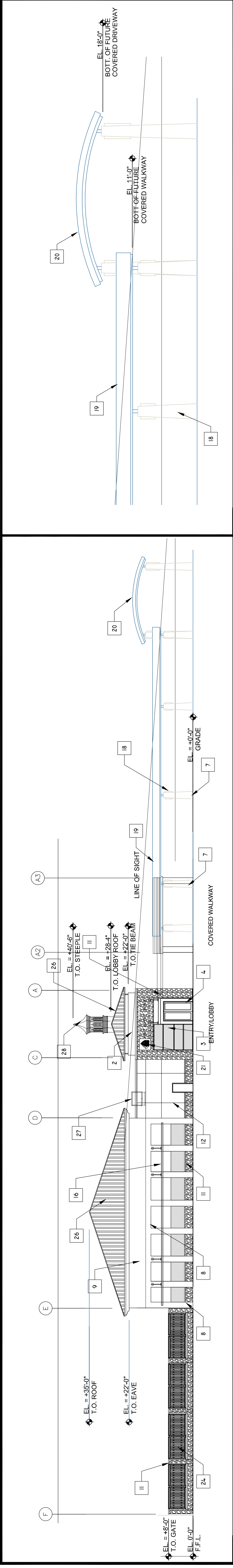


In accepting and utilizing any form of electronic media generated and provided by T&T Design and Development, Inc., the Recipient agrees to hold T&T Design and Development, Inc. harmless from any damages, liability or cost, including reasonable attorney's fees and costs of defense, arising from any changes made by anyone other than T&T Design and Development, Inc. The Recipient further agrees not to use the CAD documents in whole or in part, for any purpose other than the project which is the subject of this agreement. The Recipient agrees to waive all claims against T&T Design and Development, Inc. resulting in any way from any unauthorized changes or reuse of the drawings and data for any other project by anyone other than T&T Design and Development, Inc. In addition, the Recipient agrees, to the fullest extent permitted by law, to indemnify and hold T&T Design and Development, Inc. harmless from any damages, liability or cost, including reasonable attorney's fees and costs of defense, arising from any changes made by anyone other than T&T Design and Development, Inc. The Recipient further agrees not to use the drawings and data without the prior written consent of T&T Design and Development, Inc. Under no circumstances shall transfer of the drawings and other instruments of service on electronic media for use by the Recipient be deemed a sale by merchantability and fitness for any particular purpose.



T&T Design and Development, Inc.
 6810 Lyons Technology Circle
 Suite 140, Coconut Creek, FL
 Phone: (954) 725-9188
 Fax: (954) 725-9199
 www.ttdesigninc.com
 info@ttdesigninc.com

FIRST BAPTIST CHURCH OF COCONUT CREEK
 5100 W. Hillsboro Blvd., Coconut Creek, FL 33073

First Baptist Church
 United Methodist Church of Coconut Creek

REV:	06-11-2015	DATE:	09-9-2015	RESUBMITTAL
ISSUE FOR:	PRELIMINARY DESIGN			

KEY NOTES	COLOR TYPE	COLOR CODE
1. IMPACT GLASS	GREEN	1-121
2. IMPACT GLASS WINDOW FRAME*	WHITE TO MATCH PURE WHITE	SW 7005
3. IMPACT GLASS STOREFRONT*	WHITE TO MATCH PURE WHITE	SW 7005
4. IMPACT DOORS	WHITE TO MATCH PURE WHITE	SW 7005
5. METAL FRAME CANOPY SUPPORT	WHITE	SW 7005
6. CONCRETE COLUMN	ARTICHOKE	SW 6179
7. PANEL COLOR	LATITE	SW 6108 (BASE)
8. PANEL COLOR	ARTICHOKE	SW 6179 (ACCENT)
9. PANEL COLOR	VANILIN	SW 6371 (TRM)
10. BRICK/STONE ACCENT	MULTI-TONE	
11. RECESS SCORE LINE (5/8" X 3/4")	FLORIDA WHITE	1-121
12. RECESS SCORE LINE (1/2" X 3/4")	FLORIDA WHITE	1-121
13. HAND DOOR 2'4" (6'6" X 3'4")	COLOR TO MATCH	
14. METAL FRAME CANOPY	ALUMINUM METAL	
15. ACCESS LADDER TO ROOF	COLOR TO MATCH	
16. COLUMN FLAG BANNER	GREY METAL ROOF	
17. COVERED WALKWAY	GREY METAL ROOF	
18. SIGNAGE LOCATION	BLACK	BW 6031
19. EXTERIOR BLOSS LIGHTS	GREY	
20. METAL FENCE	GREY	
21. HAND DOOR 2'4" (6'6" X 3'4")	GREY	
22. METAL ROOF AL COA OR EQUAL	GREY	
23. MECHANICAL EQUIPMENT	GREY	
24. PREFAB STEEPLE	GREY	

GENERAL NOTES:
 A. ALL WINDOWS SHALL HAVE IMPACT RESISTANT GLASS AND FRAME SYSTEMS.
 B. COLORS FOR RECEDES TO BE SELECTED BY ARCHITECT.
 C. ALL AIR CONDITION UNITS WILL BE LOCATED ON TOP OF BUILDING ADJACENT TO PORT COCHERE.
 D. ALL AIR CONDITION UNITS WILL BE LOCATED ON TOP OF BUILDING ADJACENT TO PORT COCHERE.
 E. ALL COLOR FINISH TO BE SCODE OR EQUAL.
 F. PANEL COLORS TO MATCH SHERWIN WILLIAMS OR EQUAL.

