

CODE COMPLIANCE DATA

SEC. 18-443 MINIMUM LANDSCAPE REQUIREMENTS FOR ZONING DISTRICTS
(4) PUD DISTRICTS (DESIGNATED COMMERCIAL PUD DISTRICT)
 1 tree and 5 shrubs / 1000 sq. ft. of plot area not utilized for structures and parking
 Total plot square footage = 26,454 sq. ft.
 Total building area = 25,895 sq. ft.
 Total parking area = 93,895 sq. ft.
 Area not utilized for parking or structures = 143,000 sq. ft. / 1000 = 143 trees required
 143 trees provided
 143 (number of trees req'd) x 5 = 1000 shrubs provided

(6) COMMERCIAL AND INDUSTRIAL DISTRICTS ADJUTING RESIDENTIAL DISTRICTS
 6' masonry wall
 3 trees, 15' H. x 8' spr. / 100' continuous hedge
 (masonry wall requirement may be waived by P and Z Board if landscaping is substituted including berms, trees, hedges)
 West Property Line (20' area contiguous to 'In The Pines'
 50' / 100 = 52 x 3 = 16 trees required
 16 trees provided
 260 hedge required
 260 hedge provided
 berm required
 berm provided

North Property Line (15' area between access road, south of 'In The Pines'
 382' / 100 = 382 x 3 = 12 trees required
 12 trees provided
 196 hedge required
 196 hedge provided
 berm required
 berm provided

(7) SPECIAL PROVISIONS
 6. Landscaping is required on all areas not covered by structures, walks, drives, and must extend to abutting streets, canals, waterways
 c. A min. of 5' buffer required the perimeter of a project that abuts a similar district.
 e. Landscaping is required within the green space / planter areas of all commercial buildings between the building and parking or villa's per the zoning code.
 Each 40' of green area required a minimum of 1 tree and 20 shrubs and 30 groundcover plants - this area to provide tiered landscape at various levels.
 Length of perimeter of bldg with green space between bldgs and parking or other villa's

275' / 40 = 1 trees required
 3 trees provided
 136 shrubs required
 210 shrubs provided
 275' / 40 = 6.875 x 20 = 344 groundcover required
 344 groundcover provided

f. 15' clear zone required around parking lot lighting.
 Trees must not block stop signs.
 Parking lot islands are intended for landscaping. Site lights shall be located out of parking lot islands such that trees are not affected and do not impede site lights.

g. Recreation areas and community facilities shall be landscaped according to commercial landscape requirements.
(8) Perimeter Landscaping Abutting other Districts
 a. 10' wide landscape strip - 1 tree / 40', continuous hedge

South Property Line
 96.4' / 40 = 25 trees required
 25 trees provided
 482 hedge required
 500 hedge required

East Property Line
 574' / 40 = 15 trees required
 10 trees provided
 5 trees exist
 384 hedge required
 284 hedge provided

(11) OPEN STORAGE AREAS, EQUIPMENT, ETC.
 Must be screened on 3 sides, must exceed height of object by 6' within 2 years of C.O.

(12) INTERIOR LANDSCAPE REQUIREMENTS FOR VILLA'S
 a. Intermediate and terminal islands, 1 tree / 10 parking spaces
 150 spaces / 10 = 15 trees required
 15 trees provided
 1 tree exists

b. Other Villa's shall have 1 sq. ft. of landscape area / 100 sq. ft. of paved area
 Total paved area = 95,895 sq. ft.
 150 spaces / 10 = 16 x 150 = 3,072 sq. ft. required
 150 spaces x 300 = 45,000 sq. ft.
 95,895 sq. ft. - 41,400 sq. ft. = 48,489 sq. ft. required
 48,489 / 100 = 485 + 3,072 = 3,557 sq. ft. required
 4,001 sq. ft. provided

c. Divider Median in parking lots min. 5' width, 1 canopy tree / 40' / 240 ft. / 40 = 6 canopy trees required
 6 canopy trees provided

d. Divider Median between roads
 1 tree / 40' = 15' / 40 = 5 trees required
 5 trees provided

(13) STREET TREES
 1 tree / 40'
 Hillsboro Blvd.
 574' / 40 = 15 trees required
 15 trees provided

(15) ROADWAY LANDSCAPE BUFFERS STANDARDS
 25' width, 1 tree / 2000 sq. ft. hedges required at 24" oc, 40 shrubs / 2000 sq. ft. groundcover. Three tiers required.
 Hillsboro Blvd
 12,015 sq. ft. / 2,000 = 6 trees required
 6 trees provided
 240 hedge required
 240 hedge required
 6 x 40 = 240 shrubs required
 350 shrubs provided
 470 groundcover required
 450 groundcover provided

TOTAL TREES REQUIRED = 266 trees required
 TOTAL TREES PROVIDED = 262 trees provided
 6 trees exist

50% of plant material must be native (excluding ground cover)
 Trees provided = 265 x 50 = 133 native trees required
 235 native trees provided

40% of provided trees must be shade / canopy trees = 106 shade/canopy trees required
 226 shade/canopy trees provided
 30% of provided trees can be intermediate = 15 intermediate allowed
 61 intermediate provided
 (14 silver buttonwood 4 41 east palatka holly)
 Palms 3 to 1 (50% max. of total trees required) = 133 palms allowed
 68 when counted 3 trunks = 1 tree, royals and dates = 1 to 1)
 TOTAL SHRUBS REQUIRED = 3,649 shrubs required
 TOTAL SHRUBS PROVIDED = 5,542 shrubs provided

Shrubs and hedges provided, 5442 x 50 = 2721 native shrubs required
 2955 native shrubs provided
MITIGATION TREES
 Mitigation Trees required = 13 trees required
 13 trees provided +

+ Mitigation trees not included in any category above.
 Achieve 40% tree canopy coverage throughout the City with max. tree coverage on public and private land by 2020.
 Site = 26,454 sq. ft. x 40% = 10,582 sq. ft. estimated tree canopy coverage = 9,554 sq. ft. (56%)
 * Based upon category 1 trees @ 300 sq. ft. per tree, category 2 trees @ 150 sq. ft. per tree, palms at mature spread.

PHASE I PLANT LIST - Trees

SYM	BOTANICAL/COMMON NAME	SPECIFICATIONS	QTY
CE	Conocarpus erectus Green Buttonwood	12' H. x 6' spr. 2' cal.	23
CO	Chrysothamnus graveolens Bath Leaf	12' H. x 6' spr. 2' cal.	18
CS	Conocarpus e. sericeus Silver Buttonwood	10' H. x 5' spr. 2' cal.	14
IA	Ilex attenuata East Palatka Holly	12' H. x 6' spr. 2' cal.	45
MG	Magnolia grandiflora Southern Magnolia	12' H. x 6' spr. 2' cal.	5
PI	Pinus elliotii Slash Pine	oa. Hs. as noted on plan	49
QV	Quercus virginiana Live Oak	12' H. x 6' spr. 2' cal.	55
TD	Taxodium distichum Bald Cypress	12' H. x 6' spr. 2' cal.	14
			TOTAL = 224
		quantity of single species not to exceed 25% = 56	

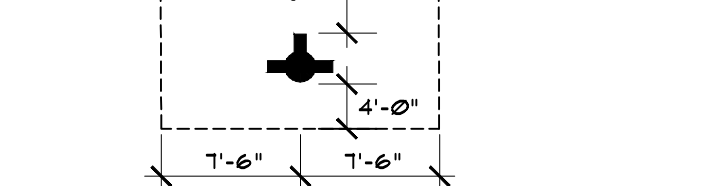
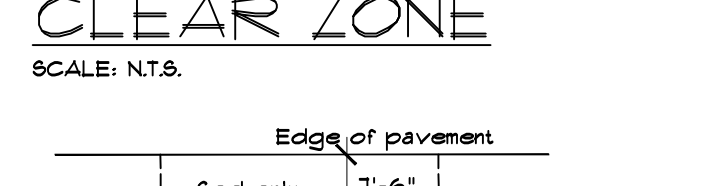
PHASE I PLANT LIST - Palms

SYM	BOTANICAL/COMMON NAME	SPECIFICATIONS	QTY
EXM	Eurochloa elegantissima Alexander Palm	16' oa. H. 8' min. cl. single trunk	5
FE2	Feederia palmetto Double Alexander Palm	16' oa. H. 8' min. cl. double trunk	3
FS	Phoenix silvestris Silver Date Palm	8' cl. min.	1
RE	Roystonea elata Florida Royal Palm	25' H. 8' cl. min.	22
SF	Sabal palmetto Sabal Palm	oa. Hs. as noted on plan, boosted	34
			TOTAL = 65
		quantity of single species not to exceed 25% (native palms exempt) = 16 total palms = 5 trunks (royals & date palm count for 1) = 1 tree = 36	

NOTE:

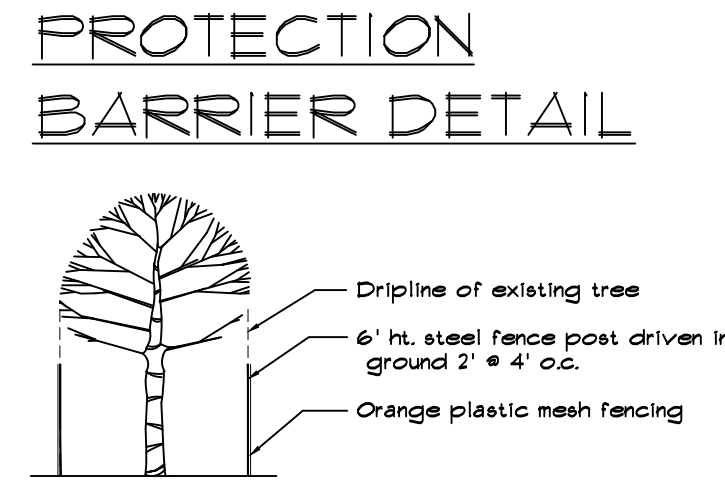
ALL LIMEROCK MUST BE EXCAVATED FROM PARKING ISLANDS TO A DEPTH OF TWO AND ONE-HALF (2 1/2) FEET AND BACKFILLED WITH THE SPECIFIED PLANTING MIX.

FIRE HYDRANT CLEAR ZONE



Requirements apply to fire hydrants, silliness connections and any other fire equipment for utilizing fire hose on public or private property.
 The diagram shall appear on all landscape plans prior to approval.
 The clear zone shall be free of landscape (except sod) mailboxes, parking, lamp-posts and all other objects (exceptions: other fire fighting equipment, or traffic posts to protect fire fighting equipment).

EXISTING TREE PROTECTION BARRIER DETAIL



PHASE I PLANT LIST - Groundcover

SYM	BOTANICAL/COMMON NAME	SPECIFICATIONS	QTY
AN	Arundo donax Landscape Arnetact	4' pots. 12' oc.	210
ARI	Aristida stricta Wire Grass	12' H. x 10' spr. 2' cal.	326
ASP	Asparagus densiflorus Foxglove Agave	12' H. x 12' spr. 18' oc.	350
BEG	Begonia 'angelwing' White Angelwing Begonia	12' H. x 12' spr. 18' oc.	28
BRD	Neoreglia 'perfection' Perfection Bromeliad	12' H. x 12' spr. 18' oc.	50
DIA	Dianella laevis Blueberry Flax Lily	12' H. x 12' spr. 18' oc.	471
JN	Juniperus chinensis Parsons Juniper	12' H. x 12' spr. 18' oc.	230
LIR	Liriodendron tulipifera Giant Liriodendron	12' H. x 12' spr. 18' oc.	506
SOD	Syntherisma securitatum St. Augustine	full, fresh sod	as req'd

PHASE I PLANT LIST - Shrubs

SYM	BOTANICAL/COMMON NAME	SPECIFICATIONS	QTY
ACA	Acacia uliginosa Copperleaf	24' H. x 18' spr. 24' oc.	209
CC	Capparis cyathophylla Jamaica Caper	5' H. x 3' spr.	3
CEB	Conocarpus e. sericeus Silver Buttonwood Hedge	24' H. x 18' spr. 24' oc.	56
CHR	Chrysothamnus graveolens Green Cocoplum Hedge	24' H. x 18' spr. 24' oc.	513
COR	Conocarpus erectus Green Buttonwood	24' H. x 18' spr. 24' oc.	22
FIG	Ficus microcarpa Green Island	12' H. x 10' spr. 24' oc.	1355
FOR	Forsteria aggregata Florida Privet	24' H. x 18' spr. 24' oc.	100
HAM	Hamelia patens 'compacta' Dwarf Firebush	24' H. x 18' spr. 24' oc.	233
ILE	Ilex vomitoria Dwarf Yaupon	12' H. x 12' spr. 18' oc.	600
KO	Isora lanata Red Talker Dwarf Isora	18' H. x 12' spr. 18' oc.	689
LIG	Ligustrum 'Jack Frost' Variegated Ligustrum	24' H. x 18' spr. 24' oc.	29
MH	Muhlenbergia capillaris Muhly Grass	12' H. x 18' spr. 18' oc.	385
MYR	Myrica punctata Myrtle	24' H. x 18' spr. 24' oc.	176
FB	Pennisetum purpureum Florida Red Bay	8' H. x 3' spr. 15" cal.	16
PHO3	Phoenix robusta Fuzzy Date Palm	5' H. virgic trunks	2
FOD	Panicum macrophyllum Podocarpus Hedge	24' H. x 18' spr. 24' oc.	53
FOP	Podocarpus macrophyllum 'pringles' Pringles Podocarpus	18' H. x 18' spr. 24' oc.	51
PSY	Psychotria nervosa Wild Coffee	24' H. x 18' spr. 24' oc.	176
SCH	Schinus molle Variegated Trinitia	24' H. x 18' spr. 24' oc.	55
SEB	Sesuvium portuacastrum Sea Purslane	18' H. x 18' spr. 24' oc.	10
THR	Thymus latifolius Thyme	24' H. x 18' spr. 24' oc.	25
TOP	Topogon Cork Oak Topiary	5' H. conical	4
TRD	Triplaris floridana Dwarf Fakahatchee	24' H. x 18' spr. 24' oc.	234
TRI	Triplaris dactyloides Fakahatchee Grass	24' H. x 18' spr. 24' oc.	156
VIO	Vitis rotundifolia Waters Vitis	24' H. x 18' spr. 24' oc.	150
			TOTAL shrubs = 5423
		quantity of single species not to exceed 25% = 1359	

COCONUT CREEK STANDARD LANDSCAPE COMMENTS

THE NOTES BELOW SUPERSEDE AND OVERRIDE OTHER NOTES AND SPECIFICATIONS INCLUDED IN THESE PLANS.

- CITY OF COCONUT CREEK**
STANDARD LANDSCAPE NOTES
- All landscape and specifications shall meet or exceed the minimum requirements as provided in the City of Coconut Creek Land Development Code. Plans are incorporated without written notes and specifications.
 - All planting material shall meet or exceed Florida Grading and Standards for Nursery Plants, current edition. Trees shall not be topped, lopped, or shaped prior to installation.
 - Landscape shall be placed to edge of abutting streets, canals, lakes or other lands.
 - All mechanical equipment, air conditioning, irrigation pump stations and equipment, FPL transformers, pool pumps, etc. must be screened on three (3) sides by landscape shrubs.
 NOTE: The quantity of screening shrubs is in addition to the required number of shrubs as provided in the code calculation table. All screening shrubs shall be planted for proper operation of equipment being screened and/or per the requirements of the utility as necessary. All hedge material required for screening purposes shall be planted with branches touching. Adjust on-center spacing as necessary and/or provide additional plants to provide an adequate screen.
 - Sight distance concerns must be maintained for clear sight visibility from thirty (30) inches to seventy-two inches, tree trunks excluded. Measurement shall be made from top of root ball planted at proper elevation.
 - Guying/staking practices shall not permit nails, screws, wires, etc., to penetrate outer surfaces of trees, palms or other plant material. Trees, palms and plant material rejected due to this practice shall be replaced with the inspector on site.
 - Wrap material, wire cages, plastic/nylon straps, etc. must be cut and removed for the top one-half (1/2) depth of the root ball. Trees and shrubs grown in grow bags or grow type material must have such material REMOVED ENTIRELY prior to planting the tree or shrub.
 - All plant material shall be free of pests, insects, diseases, weeds, etc.
 - All required landscape material shall be installed using a planting soil mix comprised of a type appropriate to the individual proposed plant material and the native soil found on the site.
 - All plant material shall be planted at the proper depth, as originally grown and/or so the top of the root ball is flush or slightly above finished grade immediately after planting. All trees should provide trunk taper when properly planted at the correct planting depth.
 - All plant material shall be watered in at time of planting to eliminate air pockets in the root zone area.
 - Upon completion of work, the site shall be cleared of all debris, surplus materials, and equipment caused by this permit to the satisfaction of the inspector.
 - Refer to Coconut Creek Fire Equipment Clear Zone diagram to maintain a safe zone fronting fire hydrants.
 - Do not plant trees, shrubs or groundcover within Electric Meter Clear Zone. Provide a safe zone as described by the Electrical Inspector.
 - All landscaped areas shall be provided with an underground fully automatic irrigation system using pop-up sprinklers. System shall provide 100% coverage with 50% overlap (minimum) using rat free water, except preserved areas remaining in natural state. A rain sensor device or switch shall be installed that will override the irrigation system when adequate rainfall has occurred. Water shall not be thrown over an impervious surface such as a sidewalk, etc. Hours of operation for all irrigation systems shall be limited to 5:00 p.m. to 8:00 a.m., only or as may be further restricted by South Florida Water Management District or other jurisdictional agency.
 - Irrigation permits shall be obtained for approval at time of building permits.
 - All non-single family or duplex irrigation systems other than City water systems shall require a South Florida Water Management District water use permit prior to issuance of an irrigation permit and installation of the irrigation system as required.
 - All site amenities to include site street lights, landscape common open space, irrigation common open spaces, buffers, berms, landscape entry features, etc. leading up to and including the model center and/or first certificate of occupancy must be completed and functional prior to issuance of the first requested certificate of occupancy. The height of all required, designed and installed berms shall be from the highest adjacent point whether it is the sidewalk, parking area, vehicular use area, surrounding ground, etc. Where a berm abuts a sidewalk, there shall be a one (1) foot level foot area adjacent to the sidewalk prior to the start of incline for the berm. An inspection is required prior to the backfilling of trees/palms in all parking medians and islands.
 NOTE: THIS COMMENT SHEET IS TO BE PLACED ON ALL LANDSCAPE PLANS "AS IS"

EXISTING TREE LIST

SYM	TREE TYPE	DESCRIPTION	STATUS	REPLACEMENT CAPACITY AREA (S.F.)
T669	Bischofia	50' H. x 40' spr. 8" cal.	remove	n/a
T670	Bischofia	50' H. x 40' spr. 16" cal.	remove	n/a
T671	Strangler fig	50' H. x 50' spr. 36" cal.	remove	1363 s.f.
T672	Acacia / Lead tree / Brazilian pepper cluster		remove	n/a
T673	Live oak	20' H. x 20' spr. 12" cal.	retain	n/a
T674	Live oak	25' H. x 20' spr. 14" cal.	retain	n/a
T675	Lurel oak	40' H. x 30' spr.	retain	n/a
T676	Slash pine	50' H. x 25' spr. 14" cal.	retain	n/a
T677	Live oak	25' H. x 20' spr. 14" cal.	retain	n/a
T678	Live oak	40' H. x 40' spr. 24" cal.	retain	n/a
T679	Slash pine	50' H. x 16' spr. 14" cal. poor	retain	n/a
T680	Gumbo limbo	30' H. x 30' spr. 5 trunks each 4"-6" cal.	retain	n/a
T681	Gumbo limbo	20' H. x 20' spr. 10" cal.	retain	n/a
T682	Gumbo limbo	20' H. x 20' spr. 10" cal.	retain	n/a
T683	Gumbo limbo	20' H. x 20' spr. 10" cal.	retain	n/a
T684	Gumbo limbo	20' H. x 20' spr. 24" cal., 1 main trunk 4"-6" cal.	remove	314 s.f.
T685	Strangler fig	20' H. x 20' spr. 24" cal.	remove	314 s.f.
T686	Lead tree	25' H. x 20' spr. 6" cal.	remove	n/a
T687	Strangler fig	40' H. x 40' spr. 48" cal.	remove	1256 s.f.
T688	Sabal palm	18' H., 12" cal.	retain	n/a
T689	Sabal palm	16' H., 12" cal.	retain	n/a
8018a	Slash pine	40' H. x 30' spr. 18" cal.	retain	n/a
8018b	Lead tree / Brazilian pepper cluster	cluster	remove	n/a
8018c	Lead tree / Brazilian pepper cluster	cluster	remove	n/a

TOTAL REPLACEMENT CANOPY AREA REQUIRED = 3847 S.F.

3847 / 300 = 13 mitigation trees required
 13 mitigation trees provided

MITIGATION PLANT LIST

SYM	BOTANICAL/COMMON NAME	SPECIFICATIONS	QTY
B8	Bursera alata Gumbo Limbo	12' H. x 6' spr. 2' cal.	3
CE	Conocarpus erectus Green Buttonwood	12' H. x 6' spr. 2' cal.	2
CO	Chrysothamnus graveolens Bath Leaf	12' H. x 6' spr. 2' cal.	3
MG	Magnolia grandiflora Southern Magnolia	12' H. x 5' spr. 2' cal.	3
TD	Taxodium distichum Bald Cypress	12' H. x 6' spr. 2' cal.	2
			15

EXISTING TREE PROTECTION NOTES

- SEC. 18-448 (N)**
- Protection from construction work. During any construction, land development or lot clearing, the contractor and the owner of the property subject to this section shall adhere to the requirements which follow:
 - Place and maintain protective barriers around the drip line of all trees to be retained on the site to prevent their destruction or damage. The protective barriers shall be at least four (4) feet in height and conspicuously colored to be seen easily by operators of trucks and other equipment. Protective barriers shall be constructed of sturdy material (not flagging or ribbons) and shall be installed prior to and during construction and/or land development.
 - Not store or use materials or equipment within the drip line of any tree to be retained on site unless the activity is being done to protect trees;
 - Not discharge or contaminate the soil within the drip line of any tree to be retained on site with any construction materials such as paint, oil, solvents, petroleum products, asphalt, concrete, mortar, or other materials that may cause adverse impacts.
 - Clearing of vegetation within the dripline of trees designated for preservation shall only be by hand or light rubber wheeled equipment that will not damage tree roots; said equipment shall be a maximum of forty-eight (48) inches wide, fire to fire, with a maximum weight of three thousand five hundred (3,500) pounds;
 - Utilize retaining walls and drywells when needed to protect trees to be preserved from severe grade changes;
 - Pruning of trees to be preserved shall be in accordance with the standards for pruning established by ANSI A-300;
 - Make no attachments, other than those of a protective and nondamaging nature, to any tree to be retained on the site;
 - Not change the natural grade above the root system within the drip line of any tree to be retained on site unless it can be demonstrated to the city that it will not damage any tree;
 - Avoid any encroachments, excavations or severe grade changes within the drip line of preserved trees unless it can be demonstrated to the city that it will not impact any tree, and



project:
first
baptist
church
 coconut creek
 florida

dave bodker
 landscape architecture/planning inc.
 601 n. congress ave., suite 105-a
 delray beach, florida 33445
 561-276-6311

#LA0000999
 sheet title:

phase I
planting
plan

project number:
 4114
 date: 9-9-14
 scale: 1" = 20'
 drawn by: jae

- revisions:
 11-26-14
 7-7-15
 9-3-15
 11-26-14
 7-7-15
 9-3-15

sheet:

L-10