

PLANT LEGEND

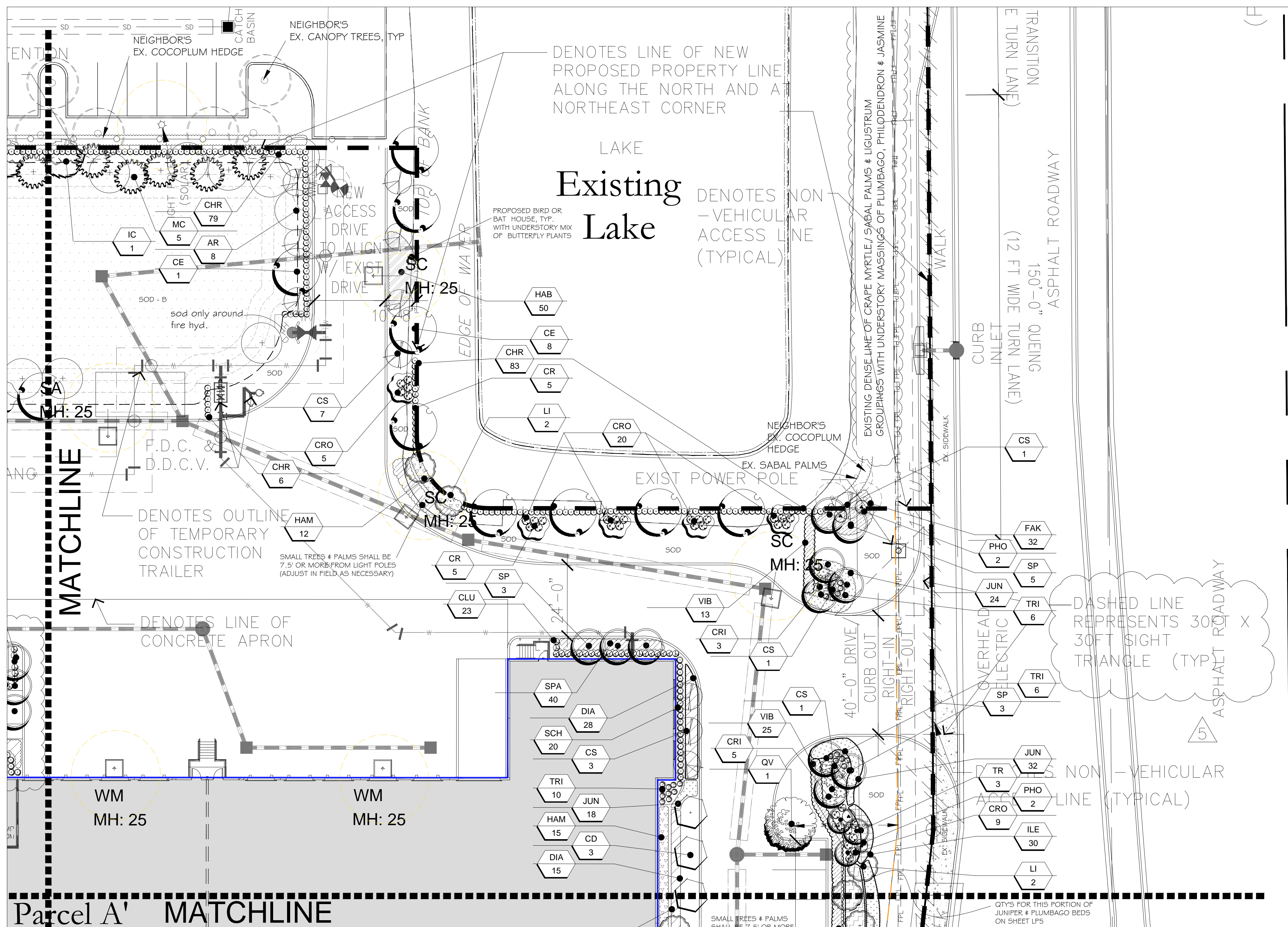
<p>QV LIVE OAK 15' HT. X 8' SPR. MIN. 3.5" DBH MIN</p> <p>CE GREEN BUTTWOOD 14' HT. X 7' SPR.; 3" DBH MIN</p> <p>DR ROYAL POINCIANA 15' HT. X 8' SPR. MIN. 3.5" DBH MIN</p> <p>LI CRAPE MYRTLE 12' HT. X 5' SPR. MIN. MULTI 5 TRUNK MIN.</p> <p>CS DESERT CASSIA 10' HT. X 4' SPR. MIN. FULL</p>	<p>BS GUMBO LIMBO 15' HT. X 8' SPR. MIN. 3.5" DBH MIN</p> <p>CD PIGEON PLUM 10' HT. X 5' SPR. MIN.</p> <p>AR RED MAPLE 12' HT. X 6" SPR. 3" DBH</p> <p>IC DAHOON HOLLY 10' HT. X 5' SPR. MIN.</p> <p>CR CLUSIA STD. 12' HT. X 6" SPR. 3" DBH</p> <p>LL LIGUSTRUM 10' HT. X 10' SPR. MULTI, TREE FORM</p>	<p>MC WAX MYRTLE 15' HT. X 8' SPR. MIN. MULTI 5 TRUNK MIN.</p> <p>VM MONTGOMERY PALM 8' CT, MATCHED</p> <p>SP SABAL PALM 12' CT - 18' CT, STG HTS</p> <p>TR THRINAX PALM 8' CT MIN.</p>	<p>AM CHRISTMAS PALM 8' CT MIN; TRIPLE</p> <p>PHO PYGMY DATE PALM 3'-4" OA; TRIPLE</p> <p>CHR RED TIP COCOPLUM 30" HT.; PLANT TIP TO TIP; FULL TO BASE</p> <p>CLU CLUSIA HEDGE 24" HT.; PLANT TIP TO TIP; FULL TO BASE</p> <p>TRI SCHEFFLERA TRINETTE 18" HT.; 2" O.C.; FULL TO BASE</p> <p>SCH SCHEFFLERA ARBORICOLA HEDGE 24" HT.; PLANT TIP TO TIP; FULL TO BASE</p>	<p>CRI Crinum Lily 7 GAL., 3 PPP, FULL</p> <p>CRO Croton spp. 7 GAL., 30" HT, FULL</p> <p>HAM FIREBUSH 18" HT.; 18" OC; FULL</p> <p>PLU PLUMBAGO 18" HT.; 18" OC; FULL</p> <p>FAK DWF FAKAHATCHEE GRASS 24" HT; FULL, 30" OC</p> <p>JUN JUNIPER 15" HT.; 18" O.C.; FULL</p>	<p>VIB Viburnum hedge 24" HT; FULL, TIP TO TIP</p> <p>DIA Flax lily 20" HT.; 2" OC; FULL</p> <p>SPA Cordgrass 20" HT; 2" OC, FULL</p> <p>ZAM FL Coontie 18" HT.; 18" OC</p> <p>ILE DWF YAUFON HOLLY 12" HT.; 15" OC; FULLY ROOTED POTS</p> <p>ASP FOXTAIL FERN 12" HT.; 18" OC; FULL</p>
--	--	---	---	---	--

clouding of planting adjustments not shown for clarity purposes. Refer to Comment Responses for detail of revisions

REVISION	DATE
1 DRC rev #1 comments	9/28/18
2 DRC rev #2 comments	11/5/18
3 DRC comments 3/ Lyons rd access rev	12/28/18
4 DRC client rev / east loop drive	02/19/19
5 DRC comments rev #5	04/08/19
	05/06/19

LBLA, Inc.
Landscape Architecture
5610 Adair Way
Lake Worth, FL 33467
Phone: 561-644-3237
LbenderLarch@gmail.com
FL-LA666715

ALL DRAWINGS, SPECIFICATIONS AND RELATED DOCUMENTS ARE THE COPYRIGHT PROPERTY OF THE LANDSCAPE ARCHITECT AND MUST BE RETURNED UPON REQUEST. REPRODUCTIONS OF DRAWINGS, SPECIFICATIONS AND RELATED DOCUMENTS IN PART OR WHOLE IS FORBIDDEN WITHOUT THE LANDSCAPE ARCHITECT'S WRITTEN PERMISSION.
CONTRACTOR MUST CHECK AND VERIFY ALL DIMENSIONS AND FIELD CONDITIONS AND NOTIFY L.A. ARCHITECT &/OR ENGINEER IMMEDIATELY OF ANY DISCREPANCIES.



NOTE: Root barriers shall be installed (and included in bidding) by the Landscape Contractor, where required & in accordance to the municipality &/or other regulating agencies. Refer to sheet LP-6 for further details.

OVERALL SITE - PROPOSED PLANT LIST

TYPE / CATEGORY	KEY	QTY	COMMON NAME	SCIENTIFIC NAME	SIZE / SPECIFICATION	NATIVE	DIVERSITY %	AREA PER TREE (SF)	CANOPY COVERAGE (SF)
TREES									
CANOPY / CAT 1	QV	20	LIVE OAK	<i>Quercus virginiana</i>	15' HT. X 8' SPR MIN. 3.5" DBH MIN	YES	5.2	300	6000
CANOPY / CAT 1	CR	42	PITCH APPLE	<i>Clusia rosea</i>	12' HT X 5' SPR MIN. 2" DBH, FULL CANOPY	YES	10.8	300	12600
CANOPY / CAT 1	AR	47	RED MAPLE	<i>Acer rubrum</i>	12' HT X 5' SPR MIN; 2" DBH, FULL CANOPY	YES	12.1	300	14100
CANOPY / CAT 1	BS	17	GUMBO LIMBO	<i>Bursera simaruba</i>	15' HT. X 8' SPR MIN. 3.5" DBH MIN	YES	4.4	300	5100
CANOPY / CAT 1	CE	58	GREEN BUTTWOOD	<i>Conocarpus erectus</i>	12' HT X 5' SPR MIN; 2" DBH, FULL CANOPY	YES	15.0	300	17400
CANOPY / CAT 1	DR	6	ROYAL POINCIANA	<i>Delonix regia</i>	15' HT. X 8' SPR MIN; 3.5" DBH MIN	NO	1.6	300	1800
INTERMEDIATE / CAT 2	CS	46	SCRAMBLED EGG TREE	<i>Cassia suratanensis</i>	10' HT. X 4' SPR MIN. 2" DBH, FULL	NO	11.9	150	6900
INTERMEDIATE / CAT 2	CD	6	PIGEON PLUM	<i>Coccoloba diversifolia</i>	10' HT. X 4' SPR MIN. 2" DBH, FULL	YES	1.6	150	900
INTERMEDIATE / CAT 2	IC	31	DAHOON HOLLY	<i>Ilex cassine</i>	10' HT. X 4' SPR MIN. 2" DBH, FULL	YES	8.0	150	4650
INTERMEDIATE / CAT 2	LL	8	LIGUSTRUM	<i>Ligustrum spp.</i>	10' HT. X 10' SPR. MULTI, TREE FORM	NO	2.1	150	1200
SMALL / CAT 3	LI	16	CRAPE MYRTLE	<i>Lagerstroemia spp.</i>	8' HT X 4' SPR. MULTI, 5 TRUNK MIN (1.5" DBH PER TRUNK)	NO	4.1	100	1600
SMALL / CAT 3	MC	18	WAX MYRTLE	<i>Myrica cerifera</i>	8' HT X 4' SPR. MULTI, 5 TRUNK MIN (1.5" DBH PER TRUNK)	YES	4.7	100	1800
		315	total trees + 24" palms = 339						total = 74,050 SF
PALMS									
CAT 3	SP	55	CABBAGE PALM	<i>Sabal palmetto</i>	18 @ 12' CT, 19 @ 18' CT, 18 @ 24' CT. MIX STG HTS IN GROUPINGS	YES	14.2	100	5500
CAT 3	VM	6	MONTGOMERY PALM	<i>Vectchia montgomeryana</i>	8' CT, MATCHED	NO	1.6	100	600
CAT 4	AM	2	CHRISTMAS PALM	<i>Adonidia merrillii</i>	8' CT, TRIPLE	NO	.5	50	100
CAT 4	TR	9	FL THATCH PALM	<i>Thrinax radiata</i>	8' CT MIN.	YES	2.3	50	450
		72	total palms @ 3:1 = 24" tree credits						total = 6,650 sf
SHRUBS & GROUNDCOVER									
ACCENT	CRI	16	CRINUM LILY	<i>Crinum asiaticum</i>	7 GAL. MIN, 3PPP, FULL	NO	.7		
ACCENT	PHO	10	PYGMY DATE PALM	<i>Phoenix roebelenii</i>	3'-4" OA, TRIPLE	NO	.4		
HEDGE	CHR	621	RED TIP COCOPLUM	<i>Chrysobalanus icaco</i> Red Tip	30" HT MIN. @ INSTALL; 2" O/C; FULL TO BASE	YES	n/a		
HEDGE	CLU	224	SMALL LEAF CLUSIA	<i>Clusia guttifera</i>	24" X 18" MIN. @ INSTALL; 2" O/C; FULL TO BASE	NO	n/a		
SHRUB	CRO	108	CROTON SPP.	<i>Codiaeum variegatum</i>	7 GAL. MIN, 30" OA HT, FULL, TIP TO TIP	NO	4.8		
SHRUB	FAK	123	DWF FAKAHATCHEE	<i>Tripsacum floridanum</i>	24" HT MIN. @ INSTALL; 18" O/C; FULL ROOTED	YES	5.5		
SHRUB	HAM	229	FIREBUSH	<i>Hamelia patens</i>	18" HT MIN @ INSTALL; 18" O/C; FULLY ROOTED	YES	10.3		
SHRUB	PLU	92	PLUMBAGO	<i>Plumbago zeylanica</i>	18" X 18" MIN.; 18" OC; FULL	NO	4.1		
SHRUB	TRI	153	TRINETTE SCHEFFLERA	<i>Schefflera arboricola 'Trinette'</i>	18" X 18" MIN. @ INSTALL; TIP TO TIP; FULL TO BASE	NO	6.9		
SHRUB	SCH	117	SCHEFFLERA ARBORICOLA	<i>Schefflera arboricola</i>	24" HT MIN @ INSTALL; TIP TO TIP; FULLY ROOTED	NO	5.2		
SHRUB	SPA	40	SAND CORDGRASS	<i>Spartina bakeri</i>	20" X 20"; FULL, 2" O/C	YES	1.8		
SHRUB	ZAM	273	FL COONTIE	<i>Zamia floridana</i>	18" HT MIN @ INSTALL; 18" O/C; FULLY ROOTED	YES	12.2		
HEDGE	VIB	137	SANDBARNSIA VIBURNUM	<i>Viburnum suspensum</i>	24" HT MIN. @ INSTALL; PLANT TIP TO TIP; FULL TO BASE	NO	n/a		
SHRUB	DIA	170	VAR. FLAX LILY	<i>Dianella tasmanica variegata</i>	20" X 20"; FULL, 2" O/C	NO	7.6		
SHRUB	ILE	270	DWF YAUFON HOLLY	<i>Ilex vomitoria 'Schilling's Dwarf'</i>	12" HT MIN @ INSTALL; 15" O/C; FULLY ROOTED	YES	12.1		
		2746	total shrubs						
GROUNDCOVER	ASP	291	FOXTAIL FERN	<i>Asparagus densiflorus var. meyeri</i>	12" OA MIN. @ INSTALL; FULL; 18" OC	NO	13.0		
GROUNDCOVER	JUN	337	PARSONS JUNIPER	<i>Juniper 'parsoni'</i>	15" HT MIN @ INSTALL; 18" O/C; FULLY ROOTED	NO	15.1		
		628	total groundcover						
					TOTAL NATIVE SHRUBS = 1956 of 3631 shrubs & gc (including 200 butterfly plants)	54%	OF 2229 TOTAL SPECIES*		*excluding hedges & butterfly areas
SOD-B	TBD		BAHIA SOD	<i>Paspalum notatum</i>	SOD LAID FLAT; END TO END; NO GAPS; ROLLED (RETENTION AREAS ONLY)				
SOD	TBD		ST AUGUSTINE	<i>Stenotaphrum secundatum</i>	SOD LAID FLAT; END TO END; NO GAPS; ROLLED				
TBD			MULCH		2 CU FT BAGS, NON-CYPRESS, FDA INSPECTED AND CERT. GRADE 'A' (approx btd #1 at 3" thick min.)				
SUGGESTED HABITAT & BUTTERFLY ENHANCED AREAS									
SHRUB (NECTAR)		12 per area							
SHRUB (NECTAR)		4 per area							
GROUNDCOVER (NECTAR)		8 per area							
SHRUB (FOOD)		12 per area							
SHRUB (FOOD)		8 per area							
SHRUB (FOOD)		6 per area							

