

MATCH LINE SHEET C-8 OF 14

PARCEL "A"  
REGENCY LAKES AT COCONUT CREEK  
(PLAT BOOK 157, PAGE 23 BCR)

CONST. M.H. NO. S-2  
RIM = 15.91  
INV = 8.67  
EX. LAKE  
WATER ELEVATION = 10.40  
NOON 5/28/97

CONST. M.H. NO. S-1  
RIM = 15.50 (WITH CONC. COLLAR)  
INV = 5.42 NW  
= 5.52 S

CORE INTO EXIST. M.H.  
EXIST. M.H. NO.

CONST. M.H. NO. S-1  
RIM = 14.55  
INV = 4.90 NW (EX.)  
= 5.00 SE (PROP.)

EX. S.S. M.H.  
RIM = 14.55  
INV = 4.89 NW

EX. S.S. M.H.  
RIM = 14.32  
INV = 5.17 E

EX. S.S. M.H.  
RIM = 14.55  
INV = 4.47 W

EX. S.S. M.H.  
RIM = 14.55  
INV = 4.37 W

EX. S.S. M.H.  
RIM = 14.55  
INV = 4.35 W

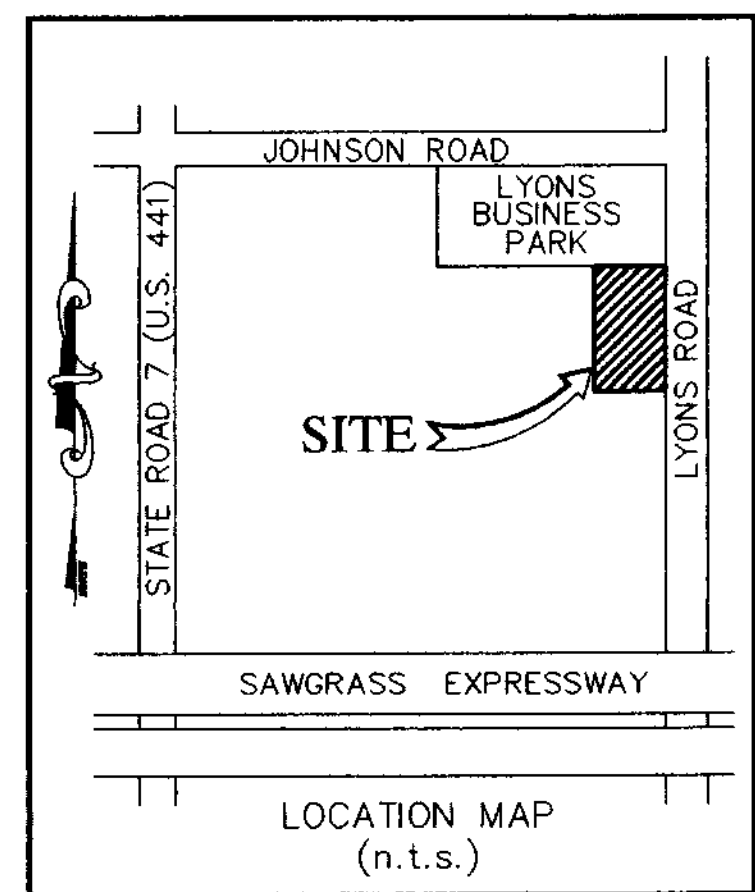
EX. LIFT STATION NO. 51  
TOP OF SLAB = 15.58  
INV. = 15.70

EX. 6" F.M.  
RIM = 14.48  
INV. = 5.73 W

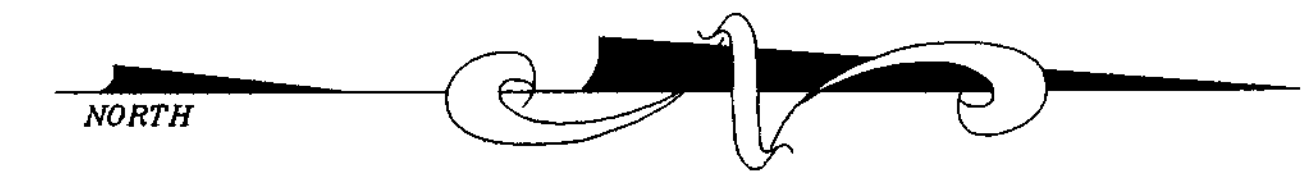
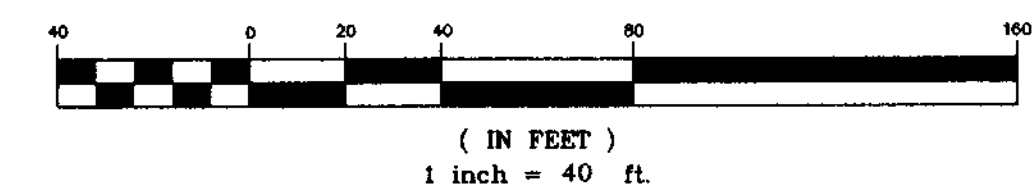
EX. S.S. M.H.  
RIM = 14.48  
INV. = 5.98 N

EX. W.M. STUB  
INV. = 6.29

EX. 8" PVC S.S.

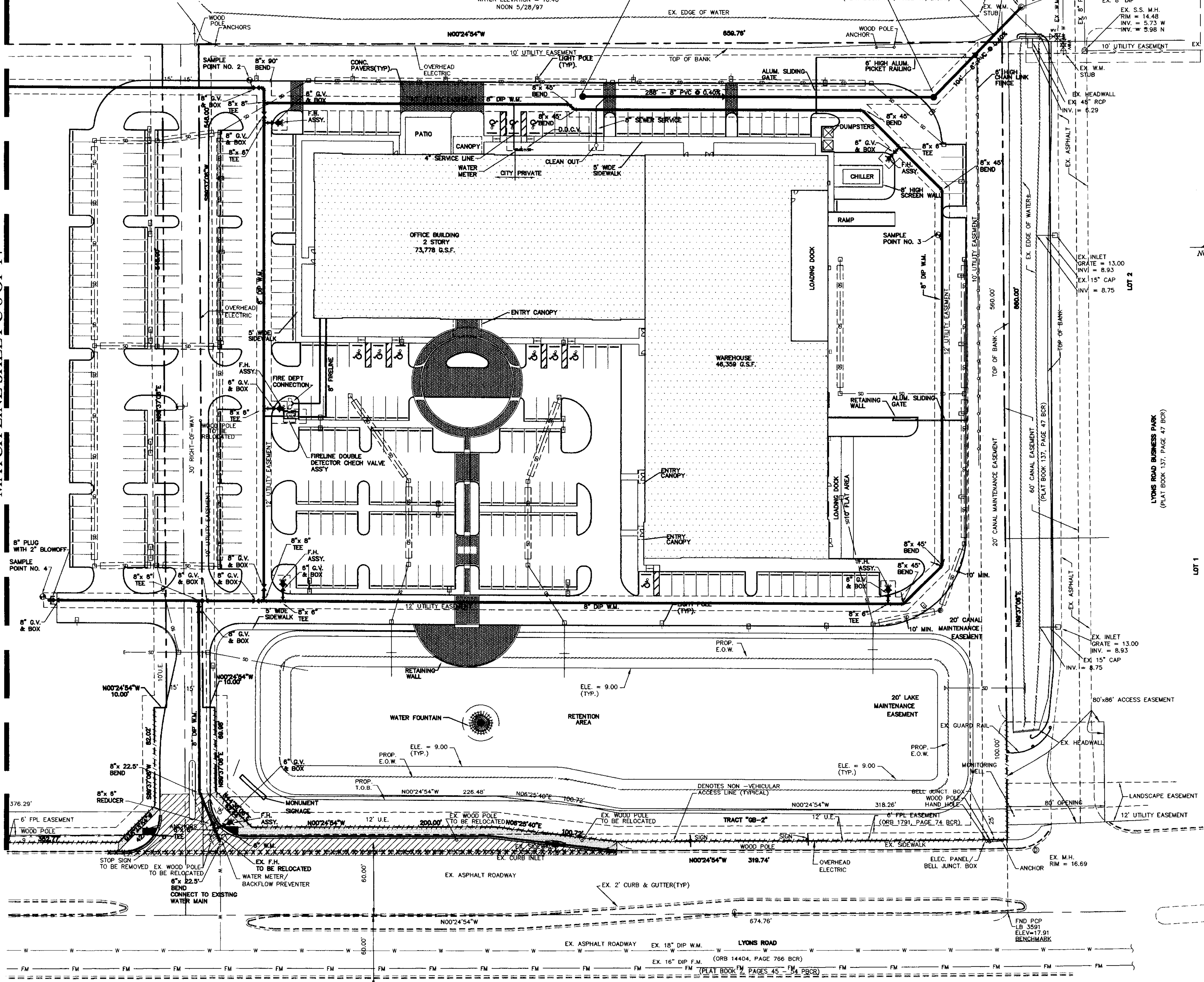


GRAPHIC SCALE



LEGEND

- PROPOSED WATER LINE (SIZE NOTED)
- PROPOSED GATE VALVE AND BOX
- PROPOSED REDUCER
- FIRE HYDRANT
- SAMPLE POINT
- EXISTING WATER LINE
- EXISTING GATE VALVE
- PROPOSED SANITARY SEWER LINE
- SANITARY SEWER FLOW DIRECTION
- EXISTING SANITARY SEWER LINE
- PROPOSED DRAINAGE SYSTEM
- EXISTING DRAINAGE SYSTEM



REV	PER	ARCH.	DATE	BY
1	BAH	7/29/04		
2	BAH	7/15/04		
3	BAH	4/13/04		
4	BAH	4/5/04		
5	BAH	3/10/04		

**CAULFIELD & WHEELER, INC.**  
 CIVIL ENGINEERING - LAND PLANNING  
 LANDSCAPE ARCHITECTURE - SURVEYING  
 730A W. PALMETTO PARK ROAD - SUITE 100A  
 BOCA RATON, FLORIDA 33433  
 PHONE (561) 592-1991 / FAX (561) 750-1452

**FOOD FOR THE POOR  
 OFFICE / WAREHOUSE  
 WATER DISTRIBUTION &  
 SANITARY SEWER PLAN**  
 COCONUT CREEK, FLORIDA

DATE 2/19/04  
 DRAWN BY BAH  
 F.B. / PG. N/A  
 SCALE 1" = 40'

JOHN CAULFIELD  
 PROFESSIONAL ENGINEER  
 CERT. NO. 45478  
 STATE OF FLORIDA  
 ENG. NO. EB 0006501  
 DATE 2-9-2004

JOB # 3212  
 SHEET NO.  
**C-7**  
 OF 14 SHEETS