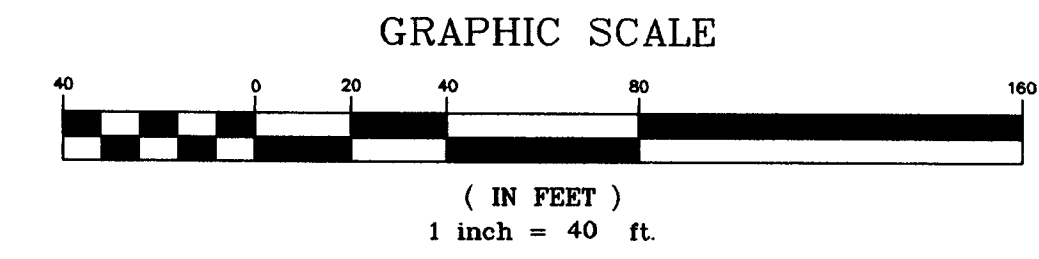
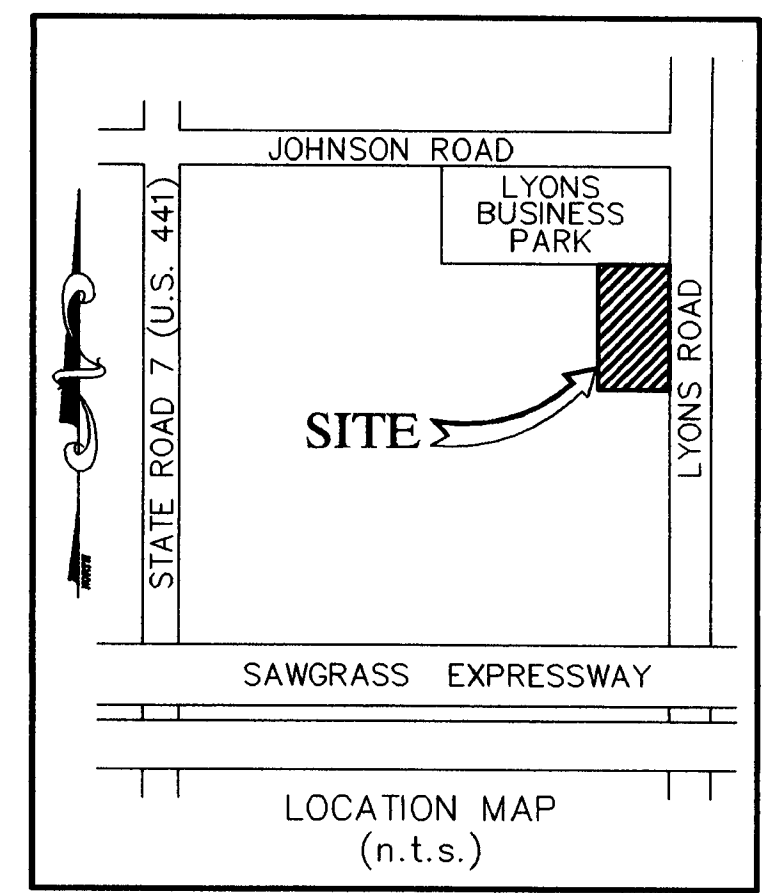
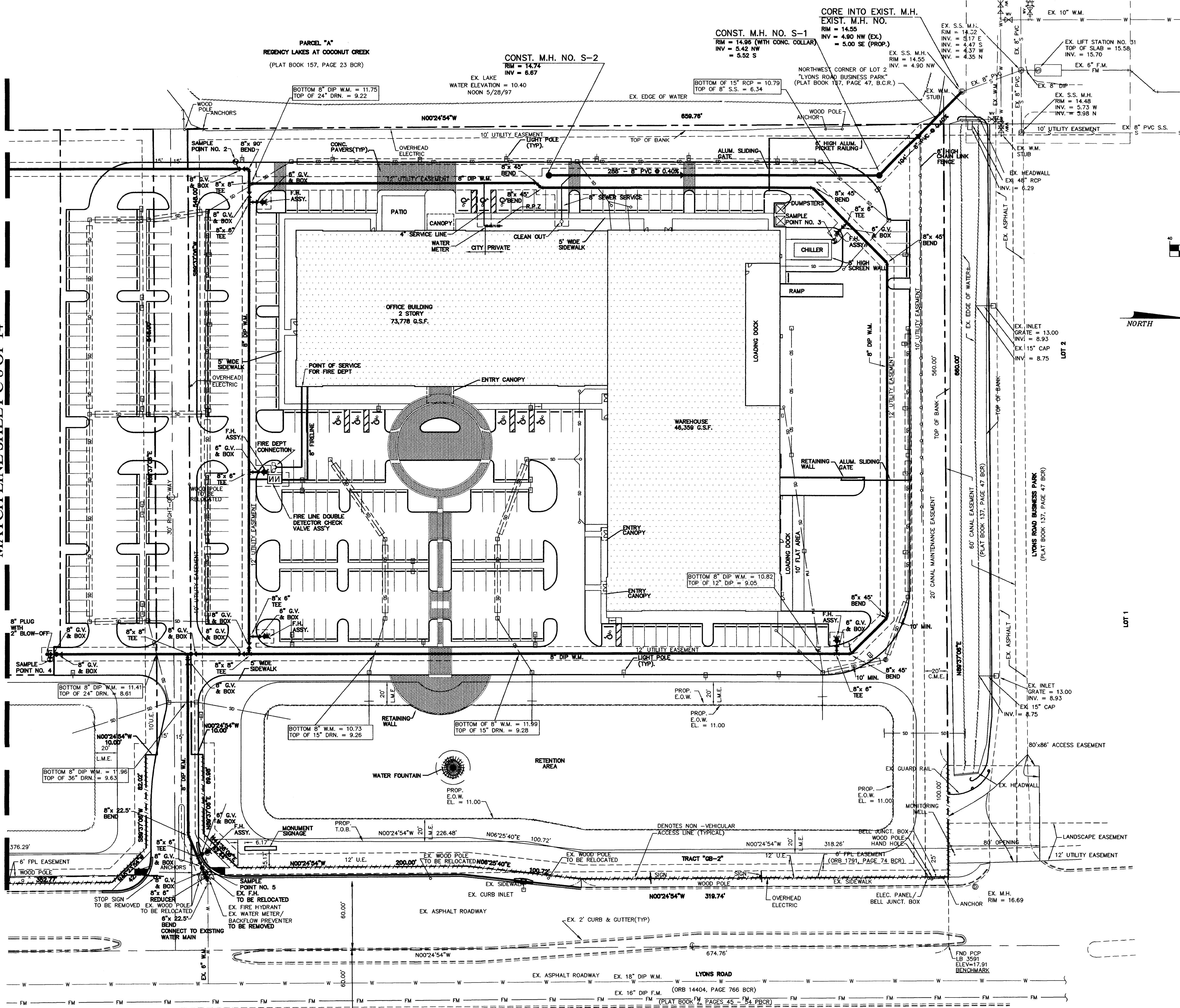


MATCH LINE SHEET C-8 OF 14



BEACHMARK
 FOUND PCP
 LB 3591
 ELEV. = 17.91

- LEGEND**
- PROPOSED WATER LINE (SIZE NOTED)
 - VALVE AND BOX
 - PROPOSED REDUCER
 - FIRE HYDRANT
 - SAMPLE POINT
 - EXISTING WATER LINE
 - EXISTING GATE VALVE
 - PROPOSED SANITARY SEWER LINE
 - SANITARY SEWER FLOW DIRECTION
 - EXISTING SANITARY SEWER LINE
 - PROPOSED DRAINAGE SYSTEM
 - EXISTING DRAINAGE SYSTEM

Call 48 hours before you dig

It's the Law!
 1-800-432-4770

Sunshine State One Call of Florida, Inc.

REV PER ARCH. (F.D.C./FIRELINE)	9/15/04
REV PER ARCH	7/7/04
REV PER CITY OF COCONUT CREEK	7/15/04
REV PER CITY OF COCONUT CREEK	4/13/04
REV PER CITY OF COCONUT CREEK	4/7/04
REV PER CITY OF COCONUT CREEK	3/7/04
REVISIONS	DATE
FILE NAME: Z:\PROJECTS\03212-6-48-42\Drawings\ENG\3212ENG	

CAULFIELD & WHEELER, INC.
 CIVIL ENGINEERING, PLANNING
 LAND SURVEYING
 7301A W PALMETTO PARK ROAD, SUITE 100A
 BOCA RATON, FLORIDA 33433
 PHONE: (561)-592-1991 / FAX (561)-750-4452

FOOD FOR THE POOR
 OFFICE / WAREHOUSE
 WATER DISTRIBUTION &
 SANITARY SEWER PLAN
 COCONUT CREEK, FLORIDA

DATE 2/19/04
 DRAWN BY BAH
 F.B. / PG. N/A
 SCALE 1"=40'

JOHN F. WHEELER
 PROFESSIONAL ENGINEER
 CERT. NO. 25478
 STATE OF FLORIDA
 ENG. NO. FB-0003591
 DATE MAR 03 2005

JOB # 3212
 SHT. NO.
C-7
 OF 14 SHEETS