



Z = Luminaire Mounting Height

Expanded Luminaire Location Summary

LumNo	Label	Z
1	AC Fixture	30
1	AC Fixture	30
2	AC Fixture	30
2	AC Fixture	30
3	AC Fixture	30
3	AC Fixture	30
4	AC Fixture	30
4	AC Fixture	30
5	AC Fixture	30
5	AC Fixture	30
6	SEPCO CIM50 T3	20
7	SEPCO CIM50 T3	20
8	SEPCO CIM50 T3	20
9	SEPCO CIM50 T3	20
Total Quantity: 14		

Luminaire Schedule

Symbol	Qty	Label	Description
	5	AC Fixture	AC Fixture 400w
	4	SEPCO CIM50 T3	CIM 50-5K-3

Calculation Summary

Label	CalcType	Units	Avg	Max	Min	Avg/Min	Max/Min
Light Trespass_S	Illuminance	Fc	0.04	0.8	0.0	N.A.	N.A.
Parking Area	Illuminance	Fc	1.69	8.7	0.1	16.90	87.00
Solar Area	Illuminance	Fc	1.04	1.6	0.5	2.08	3.20

Project Fixtures



All site lighting is confined to site and does not bleed over or glare onto adjacent residential properties as demonstrated on this lighting plan.

The calculations provided in this report are predicted lighting levels based on the above described input data and characteristics. All information should be reviewed for accuracy, understanding and agreement with all information. Any discrepancies should be noted and the preparer of this report immediately advised to clarify or change as required.

Actual lighting levels may vary from this report due to a variety of circumstances, such as: reflectances, voltage variations, objects blocking or redirecting light, different mounting heights, installation, lamp and ballast tolerances, etc. Room is considered completely empty unless noted otherwise above. Unless specifically stated otherwise, predicted foot candles are not a recommendation of lighting levels.

Solar Electric Power Company (SEPCO) assumes no responsibility for any such variances and will not be held responsible for lighting levels different from predicted levels in this report. Recipient of this report, or someone designated by recipient, must verify that lighting fixtures physically fit within the specified location(s). Catalog numbers of lighting fixtures may not be complete as all conditions may not be known.

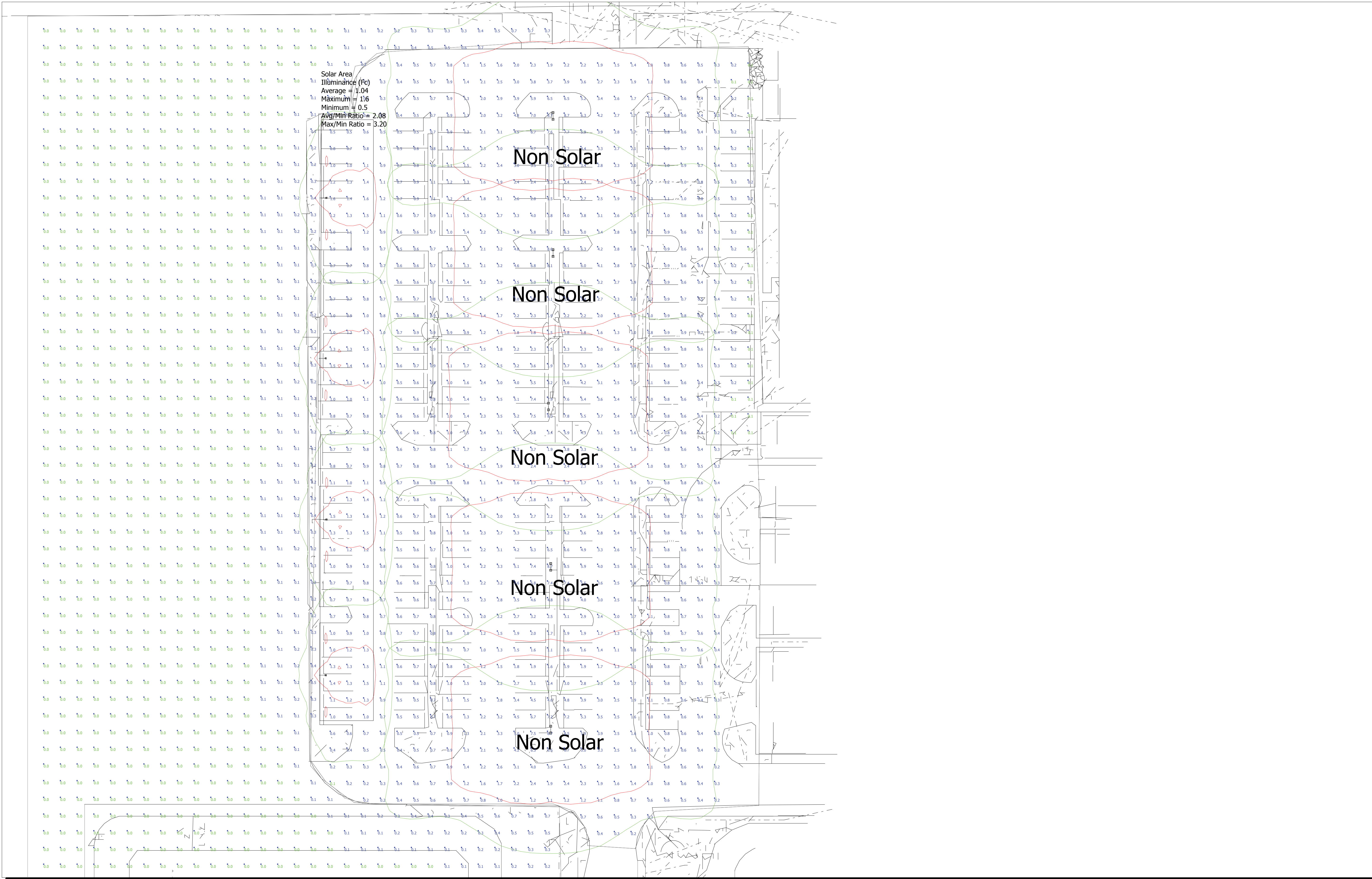


1521 SE Palm Court, Stuart, FL 34994
P (772) 220-6615 F (772) 220-8616

#	Date	Comments

Drawn By: Bud Straszewski
Checked By:
Date: 6/30/2014
Scale:

Food for the Poor
Solar Lighting Addition



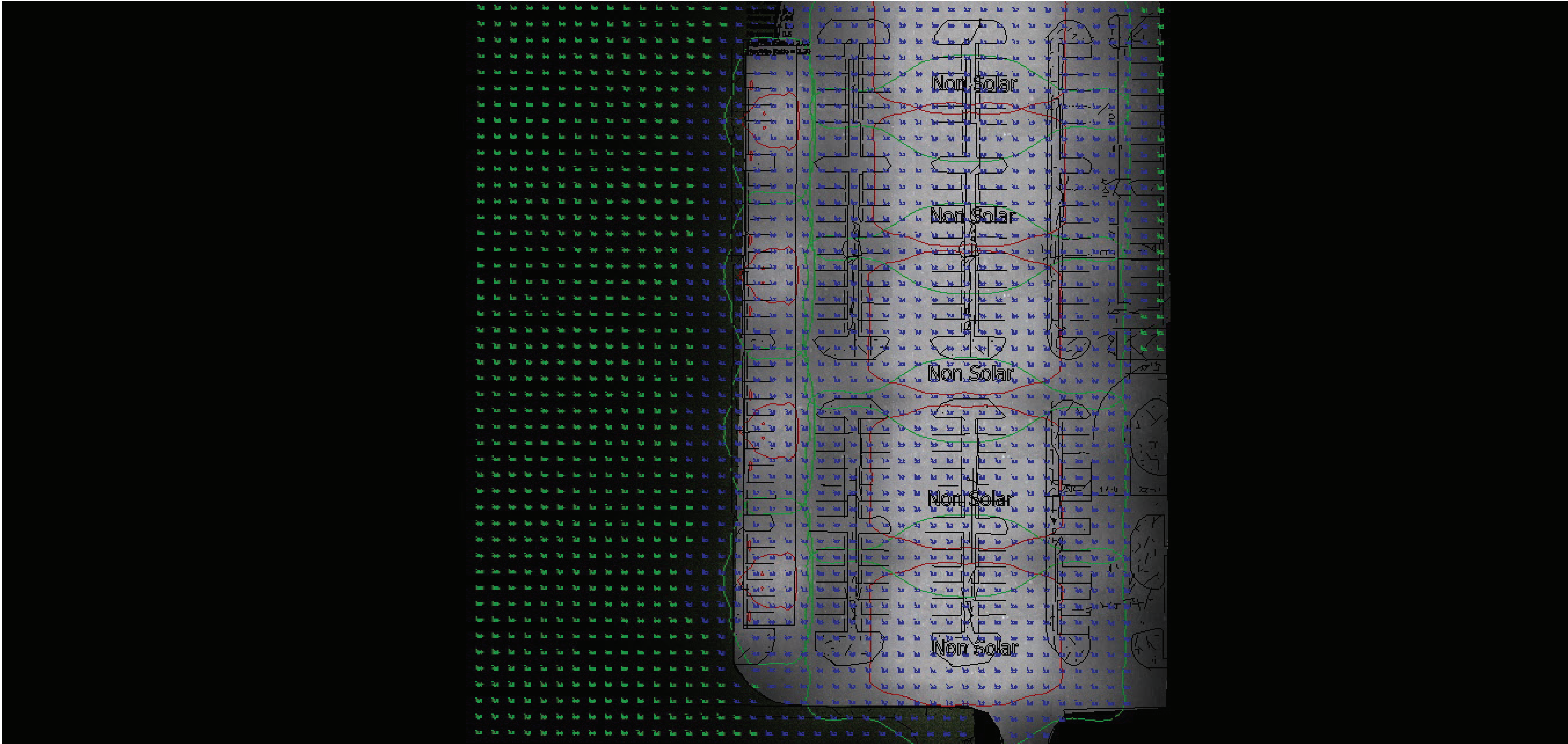
Model Layout with Calculation Grid

#	Date	Comments
Revisions		

Drawn By: Bud Straszewski
 Checked By:
 Date: 6/30/2014
 Scale:

Food for the Poor
Solar Lighting Addition

Renderings



Food for the Poor

Solar Lighting Addition

Drawn By: Bud Straszewski
Checked By:
Date: 6/30/2014
Scale:

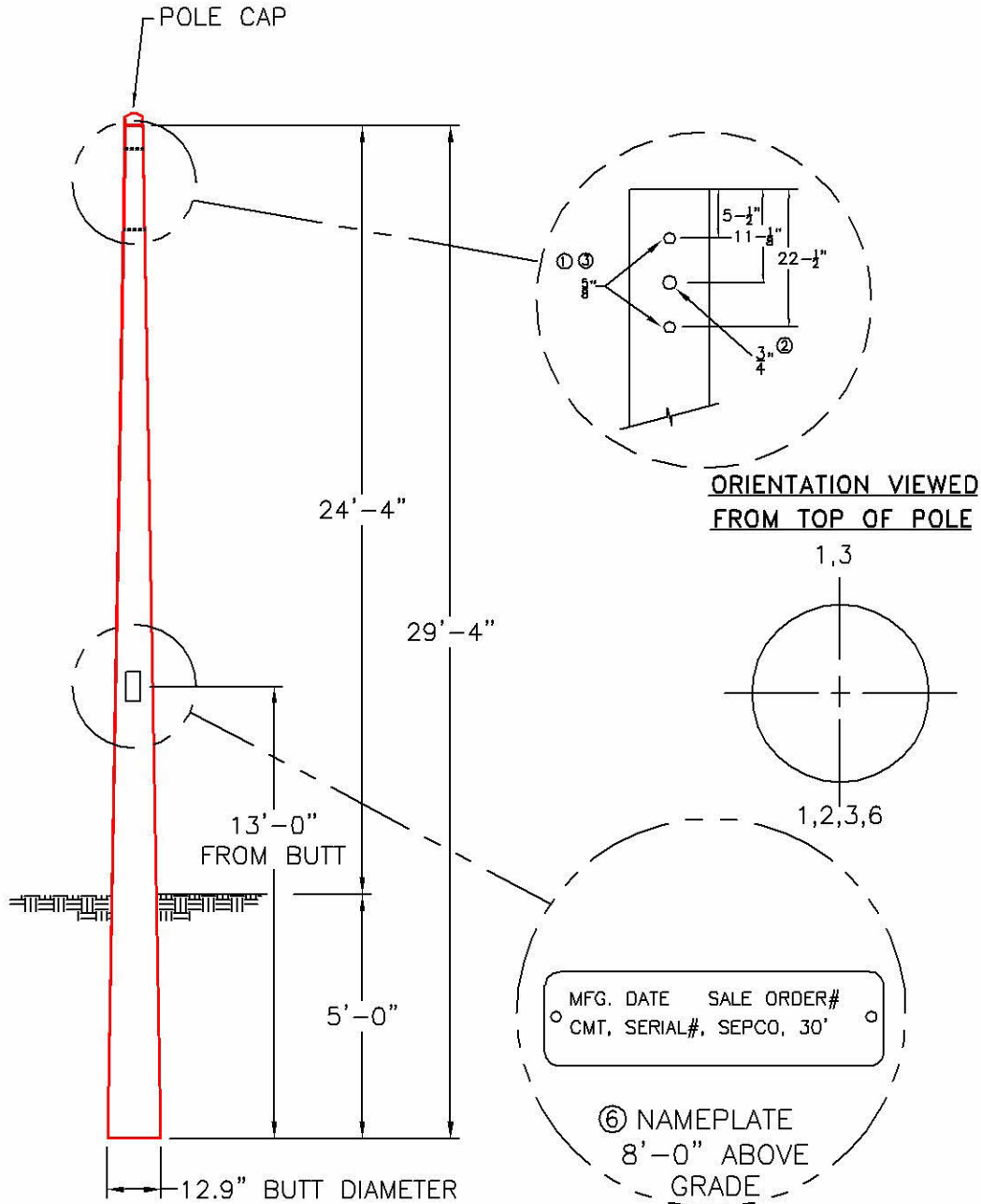
Revisions

#	Date	Comments

1521 SE Palm Court, Stuart, FL 34994
P (772) 220-6615 F (772) 220-8616

MARATHON

COMPOSITE POLES



COLOR: GRAY



CMT
41 Wood Street
Estill, SC 29918
800-416-4276
www.cmtpoles.com

SEPCO

CAT. NO.: SB30-K-350-5-PC-NP

QUANTITY: — JOB NUMBER: —

SPECS: WIND VEL.: 120 @ 1.3

PO. NUMBER: REF#:

TOT. LENGTH: 29'-4" LUM. WEIGHT: 340 lb.

REV. DATE BY REMARKS

EMBED. DEPTH: 5'-0" LUM. EPA: 17.5 sq.ft.

A 11/12/07 AJG

TIP DIA: 6.54" STATIC DEFL.: 0.00%

WEIGHT: 152 lbs. TOTAL DEFL.: 0.00%

DRAWN BY: PLF DATE: 09/11/2013