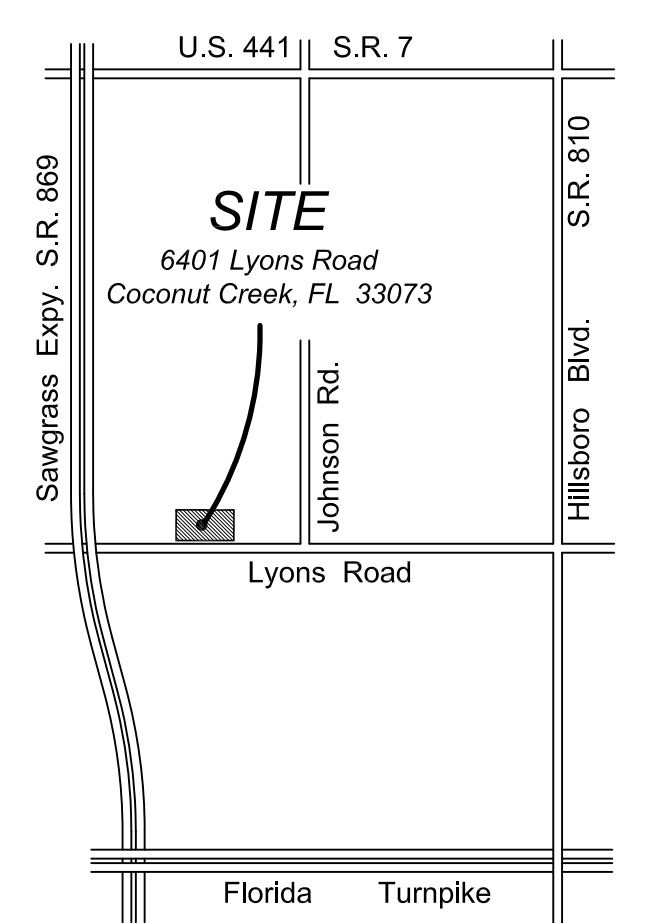


SW CORNER
SEC 6-48-42

BLOCK 85
PALM BEACH FARMS COMPANY PLAT NO. 3
(PLAT BOOK 2, PAGES 45 - 54 PBCB)

PARCEL "A"
REGENCY LAKES AT COCONUT CREEK
(PLAT BOOK 157, PAGE 23 BCR)



Site Location

Rev.	Description	Date
06-20-14	SET	
	Revisions	

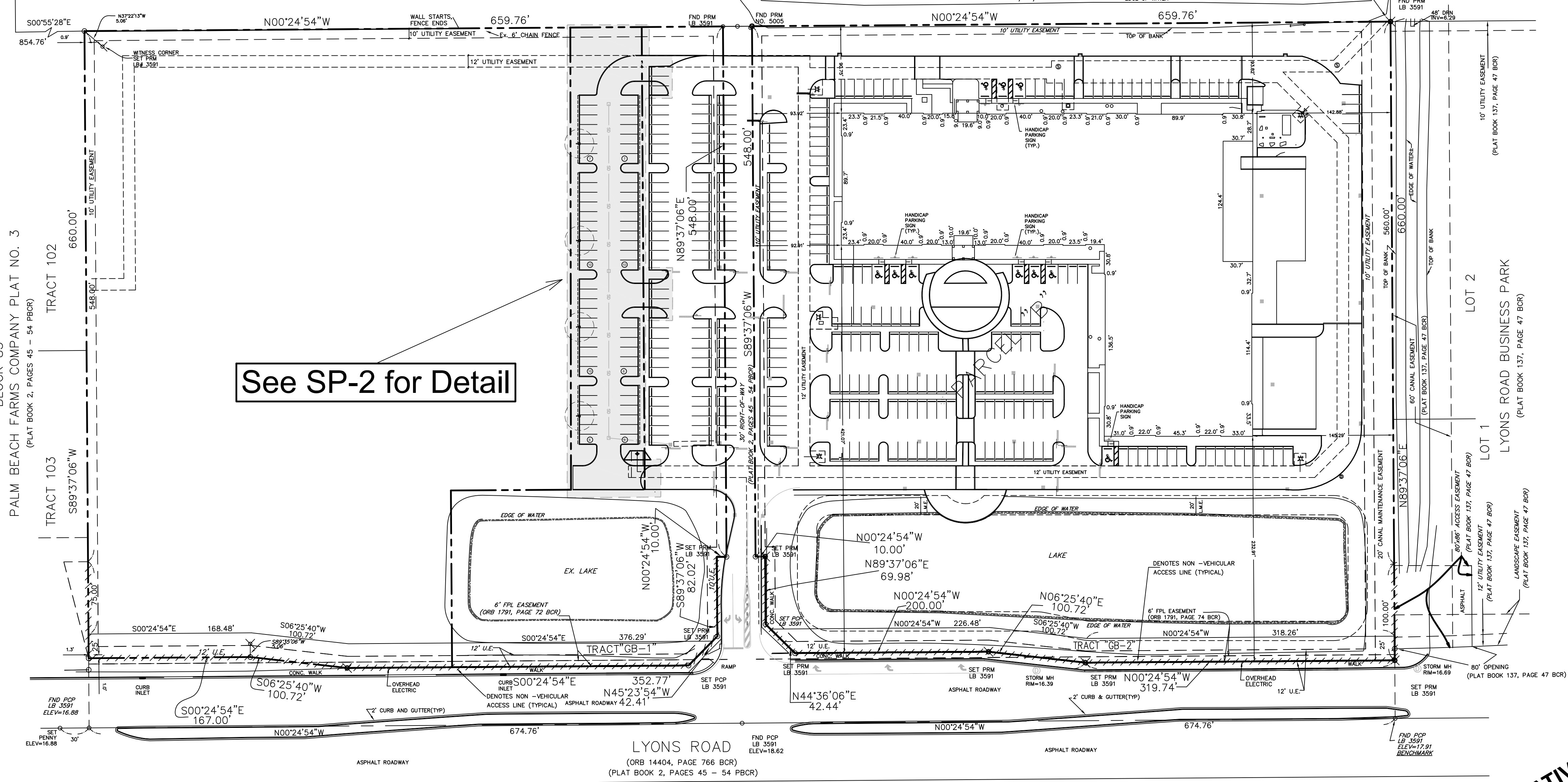
Covelli Design Associates Inc.
Urban Planning • Landscape Architecture
2295 N.W. Corporate Blvd., Suite 213
Coconut Creek, Florida 33451
561-910-0330
LC 26000287
covellidesign.com

Site Plan Modification
Food For The Poor
Coconut Creek
Florida

Date: 05-27-14
Scale: As noted
PN#: 1156

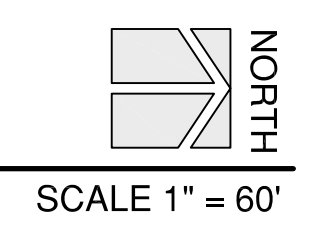
Steven E. Tate
Landscape Architect
No. 967
State of Florida
-FOR THE FIRM-
Date:

Drawing No.
SP-1
OF 2

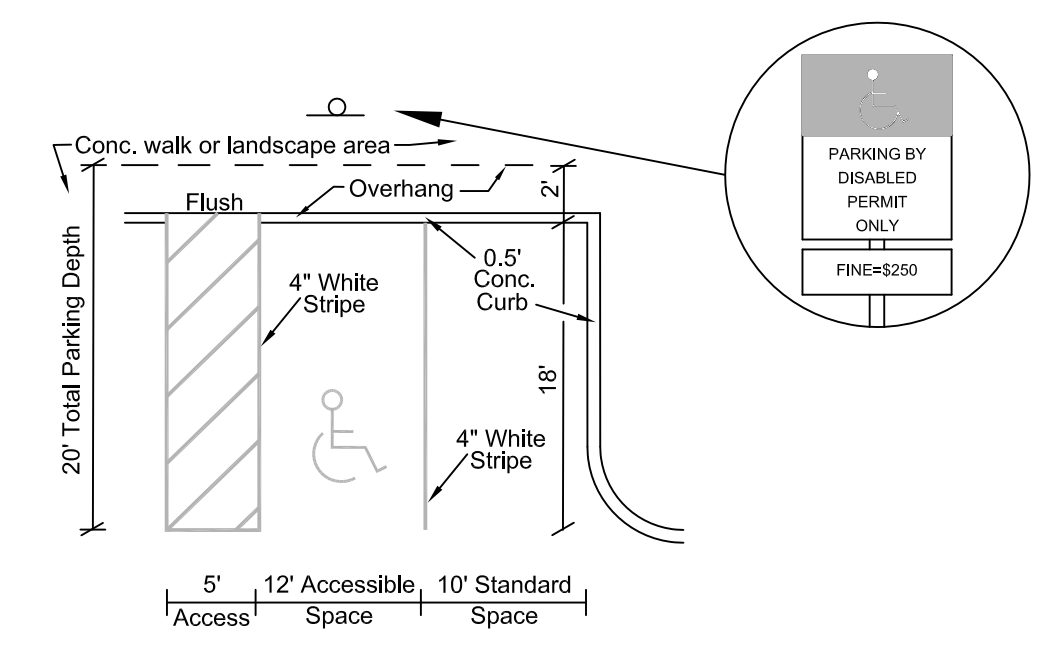


See SP-2 for Detail

Overall Site Plan



ADMINISTRATIVE APPROVAL 07-29-14
APPROVED



Parking Detail

N.T.S.

Site Data
Zoning District : IO-1

	Current Site	Proposed Modification	New Total
Site Area	538,079 s.f. 12.35 ac.	35,799 s.f. 0.82 ac.	573,878 s.f. 13.17 ac.
Bldg. Footprint	83,248 s.f. (15.47%)	0	83,248 s.f. (14.51%)
Vehicle Area	194,989 s.f. (36.24%)	25,848 s.f.	220,837 s.f. (38.48%)
Sidewalk Area	15,067 s.f. (2.80%)	0	15,067 s.f. (2.63%)
Retention Area	23,022 s.f. (4.30%)	0	23,022 s.f. (4.01%)
Landscape Area	221,753 (41.21%)	9,951 s.f.	231,704 s.f. (40.38%)
Impervious Area	316,326 s.f. (58.79%)	25,848 s.f.	342,174 s.f. (59.62%)
Pervious Area	221,753 (41.21%)	9,951 s.f.	231,704 s.f. (40.38%)

Parking Data

	Current Site	Proposed Modification	New Total
Total Building Area	120,137 s.f.	0	120,137 s.f.
Ground Level			
Warehouse	41,113 s.f.		
Office	42,135 s.f.		
Second Level			
Office	36,889 s.f.		

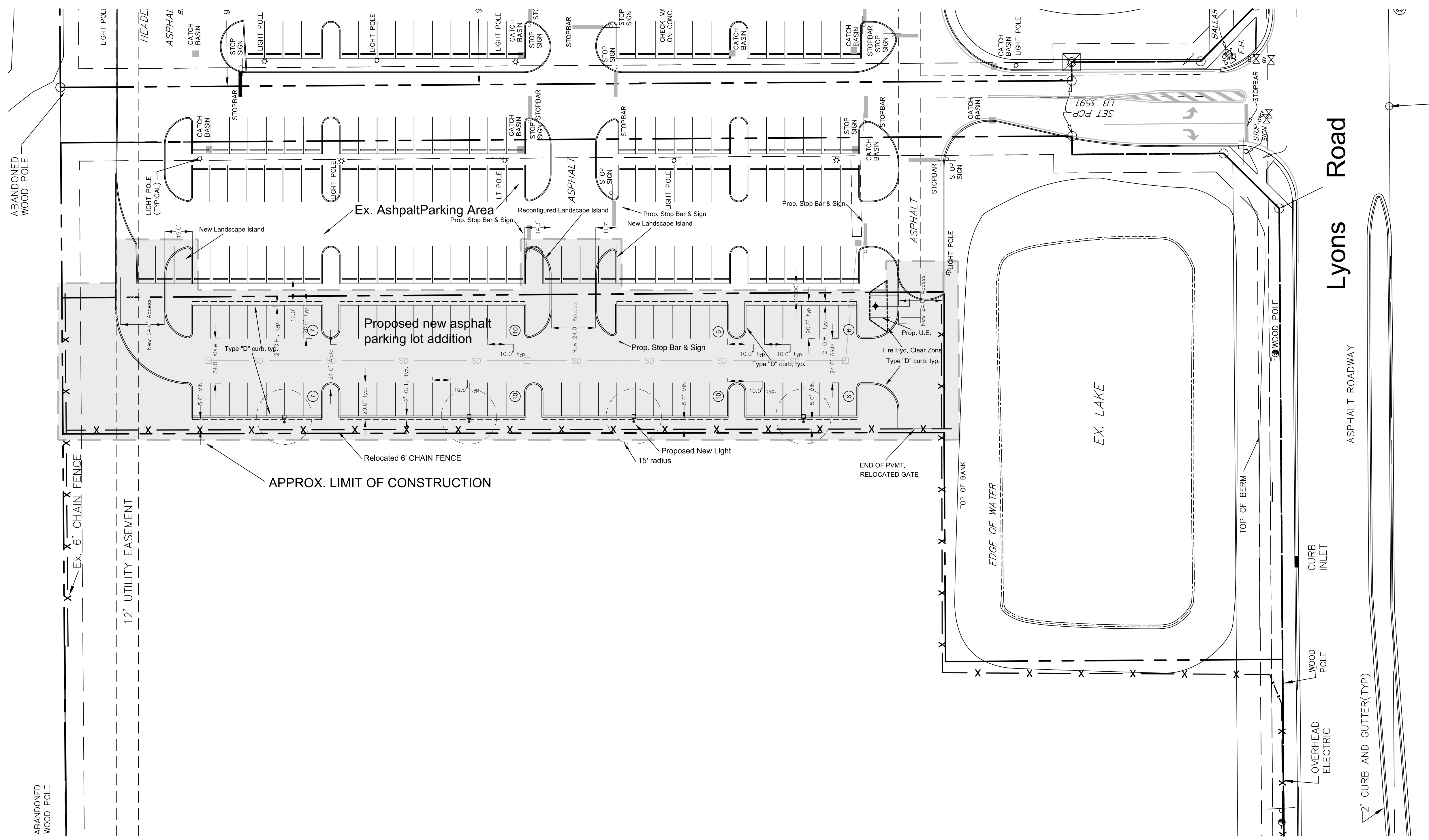
Required Parking 264 spaces (7 h.c. accessible)

79,024 g.s.f. Office @ 1/300 s.f. = 264 spaces
41,113 g.s.f. Warehouse @ 1/2000 s.f. = 21 spaces

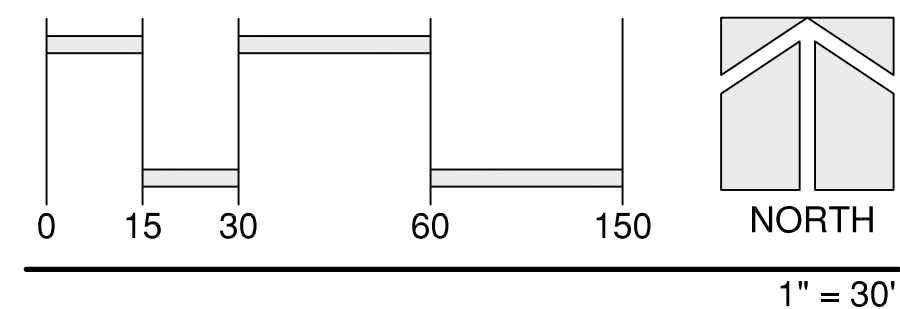
Required Loading Spaces 5 spaces 0
120,000 - 200,000 s.f. = 5 spaces

Provided Parking 285 spaces (10 h.c. accessible) 55 new spaces
Provided Loading Spaces 5 spaces

341 spaces (10 h.c. accessible)
5 Spaces



DETAIL Site Plan Modification



Revisions	SET	06-20-14
Rev. pursuant to DRC review dated 06-17-14	SET	06-20-14

Covelli Design Associates Inc.
 Urban Planning • Landscape Architecture
 2295 N.W. Corporate Blvd., Suite 213
 Fort Lauderdale, Florida 33451
 561-910-0330
 LC 26000287
 covelldesign.com

DETAIL Site Plan Modification
Food For The Poor
 Coconut Creek Florida

Date	05-27-14
Scale	As noted
PN#	1156

Steven E. Tate
 Landscape Architect
 No. 967
 State of Florida
 -FOR THE FIRM.
 Date

Drawing No.
SP-2
 OF 2

