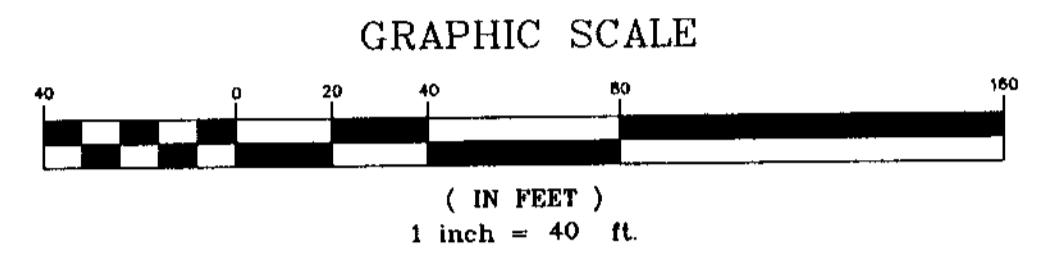
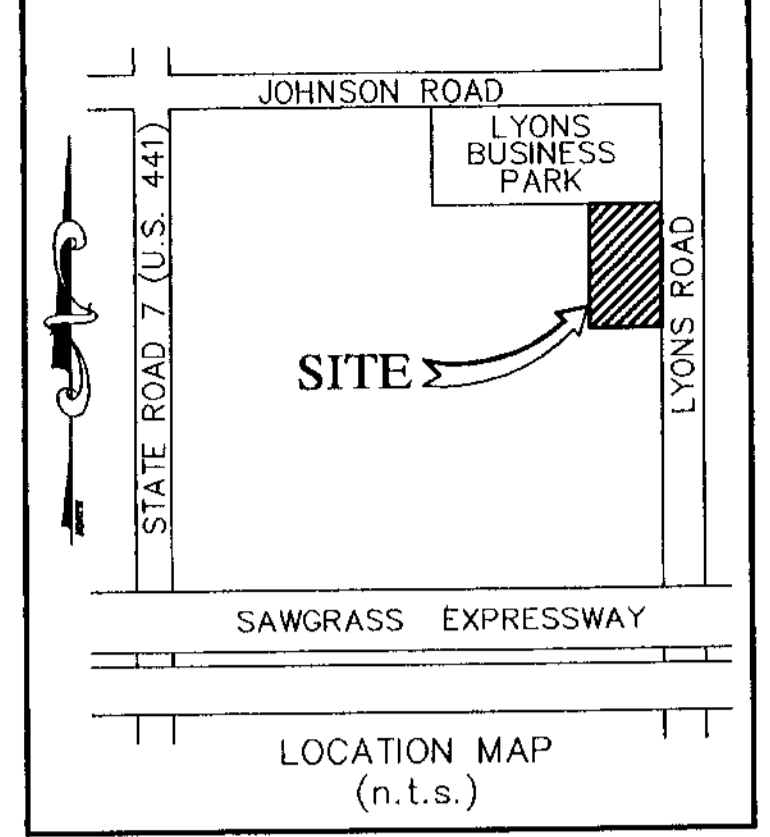
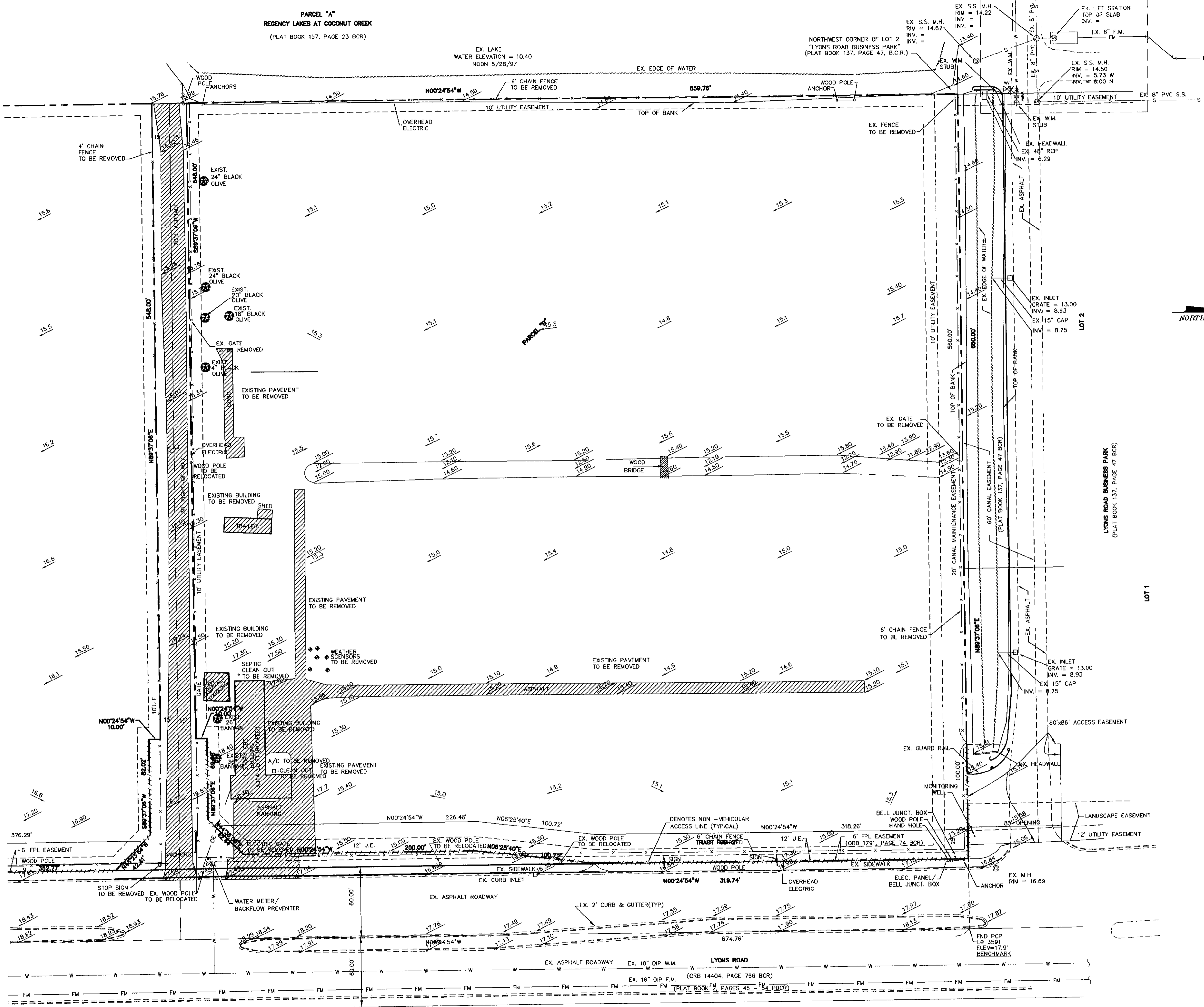


**PARCEL "A"**  
**REGENCY LAKES AT COCONUT CREEK**  
 (PLAT BOOK 157, PAGE 23 BCR)



**LEGEND**

—SD—	EXISTING PIPE AND INLET
—15.51—	EXISTING GRADE
—W—	PROPOSED WATER LINE
—W—	EXISTING WATER LINE
—S—	PROPOSED SANITARY SEWER LINE
—S—	EXISTING SANITARY SEWER LINE

REVISIONS	DATE
FILE NAME: Z:\PROJECTS\03212-5-48-42\Drawings\ENG\DRAWING	

**CAULFIELD & WHEELER, INC.**  
 CIVIL ENGINEERING - LAND PLANNING  
 LANDSCAPE ARCHITECTURE - SURVEYING  
 750 A.W. PALMETTO PARK ROAD - SUITE 100A  
 BOCA RATON, FLORIDA 33433  
 PHONE (561) 392-9911 / FAX (561) 750-452

**FOOD FOR THE POOR  
 OFFICE / WAREHOUSE  
 DEMOLITION PLAN**

COCONUT CREEK, FLORIDA

DATE	2/19/04
DRAWN BY	BAH
F.B./P.C.	N/A
SCALE	1"=40'

JOHN F. WHEELER  
 PROFESSIONAL ENGINEER  
 CERT. NO. 25478  
 STATE OF FLORIDA  
 ENG. NO. EB-0003591  
 DMAP 015 2004

JOB #	3212
SHT. NO.	C-1
OF 14 SHEETS	