

PARCEL "A"
REGENCY LAKES AT COCONUT CREEK
(PLAT BOOK 157, PAGE 23 BCR)

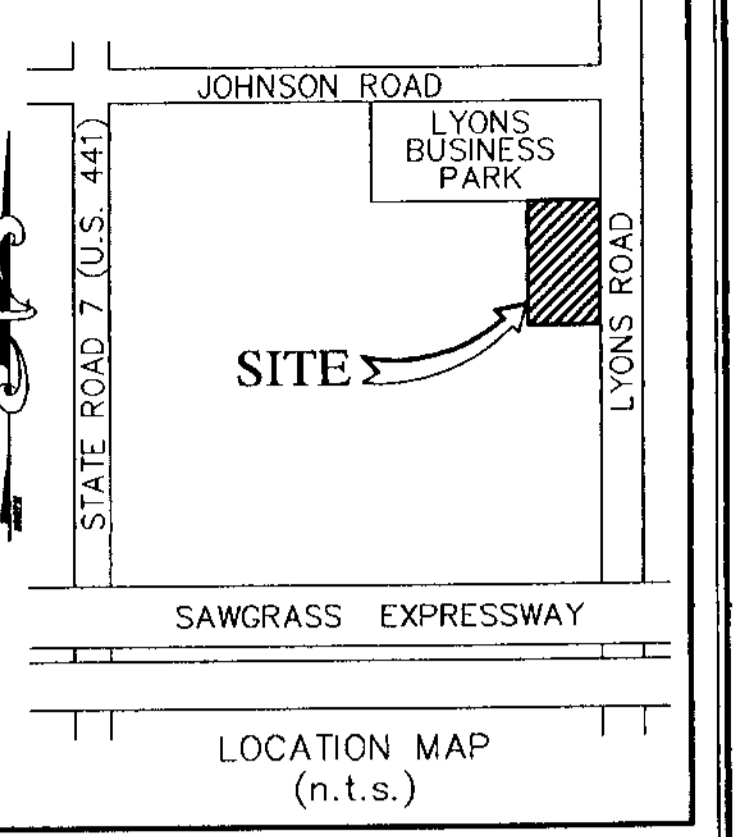
EX. LAKE
WATER ELEVATION = 10.40
NOON 5/28/97

NORTHWEST CORNER OF LOT 2
"LYONS ROAD BUSINESS PARK"
(PLAT BOOK 137, PAGE 47, B.C.R.)

EX. S.S. M.H.
RIM = 14.55
INV. = 4.90 NW

EX. LIFT STATION NO. 31
TOP OF SLAB = 15.58
INV. = 15.70

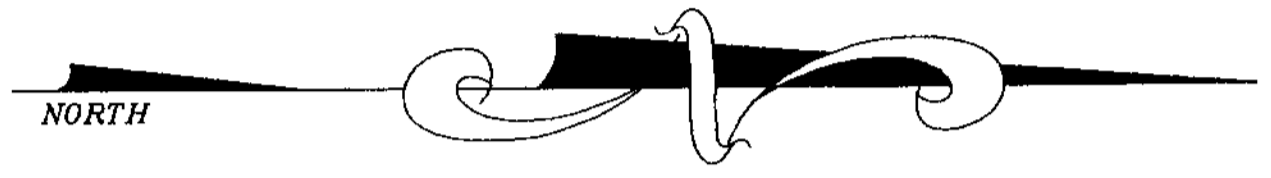
EX. S.S. M.H.
RIM = 14.48
INV. = 5.73 W
INV. = 5.98 N



GRAPHIC SCALE

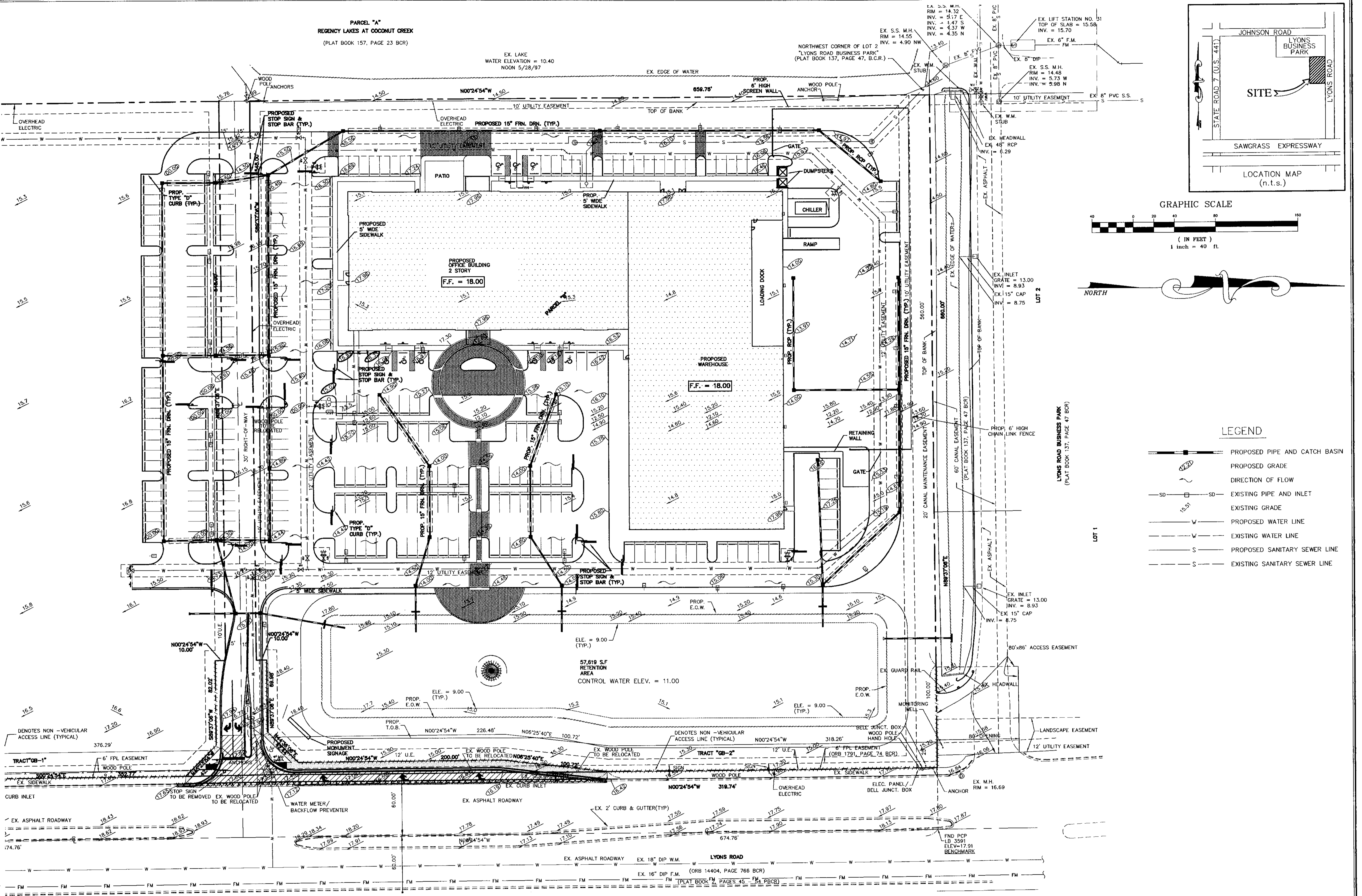


(IN FEET)
1 inch = 40 ft.



LEGEND

- PROPOSED PIPE AND CATCH BASIN
- PROPOSED GRADE
- DIRECTION OF FLOW
- SD—SD— EXISTING PIPE AND INLET
- EXISTING GRADE
- W — PROPOSED WATER LINE
- W — EXISTING WATER LINE
- S — PROPOSED SANITARY SEWER LINE
- S — EXISTING SANITARY SEWER LINE



REVISIONS	DATE	BY

CAULFIELD & WHEELER, INC.
CIVIL ENGINEERING - LAND PLANNING
LANDSCAPE ARCHITECTURE - SURVEYING
730 A W. PALMETTO PARK ROAD, SUITE 004
BOCA RATON, FLORIDA 33433
PHONE (561) 592-99 / FAX (561) 750-452

**FOOD FOR THE POOR
OFFICE / WAREHOUSE
PAVING, GRADING &
DRAINAGE PLAN**
COCONUT CREEK, FLORIDA

DATE: 2/19/04
DRAWN BY: BAH
F.B./PG.: N/A
SCALE: 1"=40'

JOHN F. WHEELER
PROFESSIONAL ENGINEER
CERT. NO. 25478
STATE OF FLORIDA
ENG. NO. EB-0003591
DANWAY 015 2002

JOB # 3212
SHT. NO. C-2
OF 14 SHEETS