

EXISTING TREE LIST

SYM	TREE TYPE	DESCRIPTION	STATUS
R	Sabal palm	10' ht.	remain
S	Sabal palm	20' ht.	remain
T	Sabal palm	10' ht.	relocate #
V	Live oak	30' ht. x 40' spr. 18" cal.	remain
W	Live oak	50' ht. x 40' spr. 18" cal.	remain
X	Mahogany tree	35' ht. x 30' spr.	remain
Y	Mahogany tree	35' ht. x 30' spr.	remain
Z	Mahogany tree	35' ht. x 30' spr.	remain
AA	Sabal palm	20' ht.	relocate #
AB	Sabal palm	10' ht.	relocate #
AC	Sabal palm	10' ht.	relocate #
AD	Sabal palm	10' ht.	relocate #
AE	Sabal palm	10' ht.	relocate #
AF	Sabal palm	20' ht.	relocate #
AG	Sabal palm	20' ht.	relocate #
AH	Live oak	40' ht. x 50' spr. 24" cal. co-dominant trunk, nice	remain
AI	Live oak	45' ht. x 30' spr. 24" cal.	remain
AJ	Live oak	20' ht. x 30' spr. 14" cal.	relocate #
AK	Sabal palm	10' ht. 10" cal.	relocate #
AL	Sabal palm	20' ht. 10" cal.	relocate #
AM	Sabal palm	24' ht. 10" cal.	relocate #
AN	Sabal palm	14' ht. 10" cal.	relocate #
AO	Sabal palm	10' ht. 8" cal.	relocate #
AS	Sabal palm	20' ht. 8" cal.	relocate #
AT	Live oak	35' ht. x 40' spr.	remain
AU	Coconut palm	40' ht.	remain
AV	Coconut palm	40' ht.	remain
AW	Double Foxtail palm	10' ht. double trunks	remain
AX	Sabal palm	10' ht. 14" cal.	relocate #
AY	Sabal palm	10' ht. 14" cal.	relocate #
AZ	Sabal palm	10' ht. 14" cal. booted	relocate #
BA	Sabal palm	10' ht. 14" cal. booted	relocate #
BB	Sabal palm	10' ht. 14" cal. booted	relocate #
BC	Double Foxtail palm	20' ht. double trunks	relocate #
BD	Sabal palm	10' ht. 12" cal. booted	relocate #
BE	Sabal palm	10' ht. 12" cal. booted	relocate #
BF	Sabal palm	10' ht. 12" cal. booted	relocate #
BG	Sabal palm	20' ht.	remain
BH	Sabal palm	10' ht.	relocate #

* TO BE RELOCATED BY OWNER. LOCATIONS TO BE DETERMINED BY THE CITY OF COCONUT CREEK
 ** EXISTING TREE 'AJ' IS TO BE ROOT PRUNED AND RELOCATED BY THE CITY OF COCONUT CREEK

LEGEND

- (+) EXISTING TREES TO REMAIN
- (+ with circle) EXISTING TREES TO BE RELOCATED BY OWNER PRIOR TO CONSTRUCTION.
- (+ with circle and dot) NEW LOCATION OF RELOCATED TREES. VERIFY WITH OWNER PRIOR TO PLANTING.
- (+ with dot) PROPOSED PALMS
- (+ with cross) PROPOSED TREES

dave bodker
 landscape architecture/planning inc.
 601 n. congress ave., suite 105-n
 delray beach, florida 33445
 561-276-6311
 #LAC000494
 job# 10710

Walters • Zackria Associates
 ARCHITECTURE • PLANNING • DESIGN
 ROBERT S. WALTERS, AIA - FL AR 6880
 ABBAS N. ZACKRIA, CST - FL AR 91250
 620 SE 87 STREET FT. LAUDERDALE FL 33301
 (954) 522-4923 FAX: (954) 522-4928
 WE ARE AN EQUAL OPPORTUNITY FIRM. ALL SERVICES ARE PROVIDED WITHOUT REGARD TO RACE, RELIGION, SEX, NATIONAL ORIGIN, ANCESTRY, AGE, OR HANDICAP. WE DO NOT DISCRIMINATE IN EMPLOYMENT, CONTRACTS, OR SERVICES. WE ARE AN EQUAL OPPORTUNITY FIRM. ALL SERVICES ARE PROVIDED WITHOUT REGARD TO RACE, RELIGION, SEX, NATIONAL ORIGIN, ANCESTRY, AGE, OR HANDICAP. WE DO NOT DISCRIMINATE IN EMPLOYMENT, CONTRACTS, OR SERVICES.

CITY OF COCONUT CREEK
 UTILITIES & ENGINEERING DIVISION
 PUBLIC WORKS BUILDING
 4800 WEST COPANS ROAD, COCONUT CREEK, FLORIDA 33063

DRAWN BY: JAE
 CHECKED BY: DJB
 DATE: 8-11-11
 REVISIONS:
 1
 2
 3
 4

1003
 SHEET
 L-1
 EXISTING TREE PLAN



EXISTING TREE PLAN
 SCALE: 1" = 20'-0"

Applicable Documents:

- A. These Specifications and the requirements hereinafter will govern the project during the installation, guarantee and maintenance period.
- Scope of Work:**
- A. The work specified by this Section of the Specifications and the Plans consists of furnishing all labor, machinery, tools, apparatus, means of transportation, supplies, equipment, material, services and incidentals necessary to complete the work as indicated on the Plans and in the Specifications, as well as other related responsibilities and responsibilities, including all change and repair incident thereto.
- B. The work shall include, but not be limited to, furnishing material, root pruning where required, layout, protection to the public, excavation, installation, backfilling, grading, fertilizing, mulching, staking and guying where required, watering, pruning where required, soil installation, seeding, cleanup, maintenance and guarantee.
- C. Quantities and Location: The Landscape Architect reserves the right to adjust the numbers and locations of the designated types and species to be used at any of the locations shown in order to provide for any modifications which might be necessary.
- D. Investigation of Subsurface Condition: The Contractor shall be responsible for making site subsurface investigations and examination as he or she chooses in order to become familiar with the character of the existing material and the contractor's unit shall be the basis for set payment. The final amount of payment may or may not be the total sum of the contract depending on the number of units installed.
- E. Ten percent (10%) of the total contract price will be held as retainer for 180 days after final written acceptance.
- G. The Landscape Contractor will coordinate his work with all other trades at the job site.

- (2) Palm frond lying shall be as set forth in the latest edition of the Florida Department of Agriculture's "Grades and Standards for Nursery Plants". Lying palms shall be at the option of the Contractor. The Landscape Architect may direct the Contractor to utilize "Palm fronds" to accommodate an owner's "ground opening". The Contractor may retain the palm after the event. This pruning will not affect the guarantee or represent an additional cost to the owner.
- (3) To reduce head volume, Palm fronds may be taper trimmed by not more than one-third.
- (4) Palms with mechanical damage, such as from cables, chains, equipment and nails, shall be rejected.

- Chlorosis:** The allowable level of Chlorosis in foliage shall be as set forth in the latest edition of the Florida Department of Agriculture's "Grades and Standards for Nursery Plants".
- Plant material shall not be accepted when the ball of earth surrounding its roots has been cracked, broken or otherwise damaged.
- K. Root pruning of plant material, when necessary, shall be done a minimum of 4 weeks, or for a period as determined by the Landscape Architect, prior to planting at the project.

- Soil:**
- A. Soil shall be solid sod and shall be standard quality grade. Note: Quality grade shall be based on the standards of soil quality grades (premier, standard or commercial) as established by the Turf Grass Producers Association of Florida Inc. The soil shall be well tilled with roots and of firm enough texture having compact top growth and heavy root development. Soil shall be free of objectionable grassy and ground level weeds. Soil shall be free of objectionable weeds. Bermuda Grass. Sod sections shall be strong enough to support when suspended vertically from a firm grasp on the upper 10% of the section. Sod shall not be harvested or transported when moisture content (excessively dry or wet) may adversely affect its survival. Sod shall be relatively free of thatch. 3/8" to one half inch (uncompressed).
- The soil embedded in the sod shall be a clean, earth free of stones and debris. The sod shall have been mowed at least three times with a lean mower with final mowing not more than seven days prior to the sod being out for placement. The sod shall be provided in commercial quantities measuring not less than 12 inches by 24 inches and shall be live, fresh and unjured at the time of placement. It shall be planted within 48 hours after being cut and shall be shaded and kept moist from the time it is cut until it is planted.

- Water:**
- A. Potable, from municipal water supplies or other sources which are approved by a public health department.
- Mulch:**
- A. Mulch shall be:
- (1) "Florimulch"
- Fertilizer:**
- A. New and existing Trees and Palms: Fertilize with 8-2-2 palm fertilizer with micronutrients at a rate of 1/2 lb. per 1000 sq. ft. of area.
- B. New and existing Shrubs, and Groundcover: Fertilize with 8-2-2 palm fertilizer with micronutrients at a rate of 1/2 lb. per 1000 sq. ft. of area.
- C. Annuals: Fertilize with Osmocote - Sierra blend 14-14-14 or approved equal.

- Composition and Quality:** All fertilizer shall be uniform in composition and dry. Granular fertilizer shall be free flowing and delivered in unopened bags. All bags, containers or boxes shall be fully labeled with the manufacturer's analysis.
- Fertilizer:**
- E. All fertilizer shall comply with the State of Florida Fertilizer laws.

- Cleanup:**
- A. Disposal of Trash: All debris and other objectionable material created through planting operation and landscape construction shall be removed completely on a daily basis from the job or as directed by the Landscape Architect. Any debris shall be placed in plastic bags and sealed which have been strewn with soil, sod, astax, fertilizer, or other debris shall be thoroughly swept.
- B. Excess Fill: All excess fill which results from the installation of the project shall remain the property of the Owner and remain on the project at the option of the Owner. All excess fill which the Owner does not wish shall be removed and disposed of from the project at no additional cost. No excess fill shall be removed or disposed of from the site until approved by the Owner or Landscape Architect. Excess fill shall be disposed of as directed.

- Protection:**
- A. Responsibility for Protection and Restoration of Property: The Contractor shall be responsible for all damage or injury to person or property.
- B. Protection Against Mechanical Damage: The Contractor's responsibility for protection against mechanical damage shall include providing protection from vehicles and providing warning signs and barricades as might be necessary and he or she shall repair, restore or replace all property which becomes damaged as a result of any negligence of the Contractor or his or her employees in complying with these requirements.

- Completion and Final Acceptance:**
- A. Upon written notice from the Contractor of the prescriptive completion of the entire project, the Owner and the Landscape Architect, along with other appropriate parties, will make an inspection within 48 hours after the written notice. If all construction provided for and compensated by the contract is found to be completed in accordance with the Plans and Specifications, such inspection shall constitute the final inspection. The Contractor shall be notified in writing of final acceptance as of the date of the final inspection.
- B. If, however, the inspection mentioned in paragraph A, above, discloses any work in which one or more items are not satisfactory, final acceptance shall not be given and the Owner and/or Landscape Architect will give the Contractor the necessary instructions or "punch lists". Upon completion of work, another inspection will be made which shall constitute the final inspection provided the work has been satisfactorily completed. In such event, the Owner or his representative shall make the final acceptance and notify the Contractor in writing of the final acceptance as of the date of the final inspection.

- Delivery, Handling and Storage:**
- A. Delivery and Handling:
- (1) Movement of nursery stock shall comply with all Federal, State, and local laws, regulations, ordinances, codes, etc.
- (2) Protect against delivery to prevent damage to root ball or desiccation of leaves. Remove unacceptable plant materials immediately from the job site. Maintain and protect while stored at the site.
- (3) Transport materials on vehicles large enough to allow plants not to be so crushed and supported. Plants shall be covered to prevent wind damage during transit.
- B. Sod:
- (1) Deliver sod on pallets with root system protected from exposure to wind and sun. Deliver sod in quantities capable of being installed within 48 hours of cutting.

- Submittals & Approvals:**
- A. Written request for approval to substitute a plant species or a plants designation (B&B, UB&B, CG, etc.), type, grade, quantity, size, quantity, etc. due to the non-availability of the material specified. Approval must be given by the Landscape Architect before the material is delivered and installed on the project. The Contractor must provide written proof that the specified plant material is unavailable.
- B. Any request for the approval of an equal shall be in writing. Approval shall be given by the Landscape Architect before the material is delivered and installed on the project.
- C. Submit three prints of shop drawings for any special conditions not covered in the details indicated. This shall be for approval by the Landscape Architect before they are implemented in the project.
- D. If requested by the Owner or Landscape Architect submit a schedule of all specimen plant material and collected plant material indicating the sources and suppliers of these materials and their locations for approval by the Landscape Architect before they are delivered and installed on the project. Also, two color photographs of each different item, showing different side views of the item shall be submitted with the schedule. Additional color photographs shall be submitted, if requested.
- E. If requested by the Owner or Landscape Architect, submit a letter indicating the sources or suppliers of all sod and the grade to be applied for approval by the Landscape Architect before it is delivered and installed on the project.

- Staking and Guying:**
- A. Staking and guying shall be the responsibility of the Landscape Contractor. Staking and guying shall not be attached directly to the plant material with nails. Also, battens used in staking and guying shall not be attached to the plant material with nails. Any method of staking and guying other than those listed in the details, shall require approval from the Landscape Architect prior to their installation. Under no circumstances will approval be given to allow the plunging, burying, or planting of trees or palms so that the top of the grade, in order to eliminate the need or requirement of staking or guying.
- B. The Contractor is responsible for performing all staking and guying in accordance with the Florida Department of Agriculture's "Grades and Standards for Nursery Plants".
- C. The decision of whether to stake or guy shall be left to the discretion of the Contractor, provided it is not required according to local regulations, ordinances and codes requirements. However, a Contractor's recommendation to stake or guy shall not relieve him or her of the responsibility of resetting plant material if it blows, falls or leans over. Also, it will not relieve the Contractor of the responsibility of the material dies as a result of blowing, falling or leaning over.

- Excavation:**
- A. Utilities (Above Ground and Underground):
- (1) The work area may have existing utilities, such as, but not limited to, electric, gas, water, sewer, telephone and cable. The location of some of these existing utilities have been indicated on the Plans.
- Grades:**
- A. It shall be the responsibility of the Contractor to provide the final grading so the final level for planting areas conforms to surrounding grades and is at the proper elevation with relation to the adjacent structures or other site conditions, unless indicated otherwise on the plans.
- B. Plant Area Next to Pavement: All planting areas next to pavement areas, such as, but not limited to, curbs, roads, drives, walkways and patios, shall be graded so that the TOP OF THE MULCH IS 1 INCH BELOW THE TOP OF THE PAVEMENT AREA or as indicated otherwise on the plans.

- Preparation:**
- A. Staking Plant Location: Stake or mark plant material location prior to final excavation, based on information from the plans.
- (3) Edge and row sod once a week.
- (4) Edge and used all shrubs, groundcover and flower beds once a week.
- (5) Remove all litter once a week.
- (6) Spraying and Dusting: Contractor shall do all seasonal spraying and/or dusting of all planting, as needed, for complete control of pests and diseases. The materials and methods shall be in accordance with the highest standard horticultural practices and as recommended by the County Agent, and approved by the Landscape Architect, prior to implementation.
- (7) Sod: After the sod has been laid, tamped and top dressed, all areas and parts of areas which fail to show uniform growth and health shall be resodded, repatched, if necessary, until all sodded areas are covered with a satisfactory lawn. Damage resulting from erosion, gullies, washouts, or other causes shall be repaired by filling with topsoil, tamping, re-fertilizing, and re-seeding to the Contractor at his or her expense.
- (8) Protection: Plant material shall be protected against trampling and damage. If any plant material is trampled or injured, they shall be treated or replaced as directed and in compliance with the Specifications at no additional cost. No work shall be done until or over planting areas or adjacent to plants without proper adequate and protection.
- (9) Keep sidewalks, curbs and gutters, driveways, parking areas, streets, terraces, decks, and pavements free of plant outtings, debris and stains.
- D. Material rejected during the course of construction shall be placed in a partial list of certain responsibilities. It is not a complete list, but only a summary of certain responsibilities.
- A. The Contractor is responsible for the entire project prior to written acceptance.
- B. The Contractor is responsible for safety on and off the Job site.
- C. Maintenance Prior to Final Acceptance:
- (1) Maintenance shall begin immediately after each plant is planted and continue until final acceptance.
- (2) Plant maintenance shall include watering, mowing, edging, pruning, weeding, cultivating, repair of erosion, mounding, lighting and electrical wiring, stakes, braces, etc., replacement of sick or dead plants, replacement of sod areas that do not become established, resetting plants to proper grades or upright position, maintenance of the watering system, litter removal, and all other care needed for proper growth of the plants.
- (3) Immediately after planting, each plant shall be staked and the watering period shall continue until final acceptance. Refer to the heading "Staking" which is in Part 3 of these Specifications, for additional requirements.
- (4) All plant material shall be seeded once a week. In the event that weeds or other undesirable vegetation becomes prevalent to such an extent that they threaten plant material, the weeds shall be removed as directed by the Landscape Architect. If necessary, the Contractor shall use mulch sand and/or planting soil shall be replaced as needed to eliminate weeds or undesirable vegetation at the expense of the Contractor.

Quality Assurance:

- A. The Landscape Architect may inspect trees, shrubs, and groundcover either at the place of growth or at the site before planting for compliance with the requirements for name, variety, size and quality. The Landscape Architect retains the right to further inspect trees and shrubs for size and condition of balls and root system, insects, injuries, and latent defects, and try to reject unsatisfactory or defective material at any time during the progress of work. The Landscape Contractor shall remove rejected trees or shrubs within 1 day from the project site.
- B. Responsibility for Assuring Quality Work:
- (1) The Contractor's Superintendent shall speak English and be well versed in Florida plant material, planting operations, Plan and Specification interpretation, coordination with other trades, and the project area and coordination between the nursery and the project.
- (2) All employees shall be competent and highly skilled in their particular job in order to properly perform the work assigned to them. The Contractor shall be responsible for maintaining the quality of the material used on the project.
- (3) The Contractor will comply with applicable Federal, State, County and local requirements governing landscape materials and work.
- C. Grade Standards:
- (1) Plant material shall be Florida #1 or better as set forth in the latest edition of the Florida Department of Agriculture's Grades and Standards for Nursery Plants.
- (2) All plant material shall be subject to the approval of the Landscape Architect for quality, size and color. Plants lacking the compactness or proper proportions, plants which are weak or thin, and plants injured by insect damage or other causes will not be accepted. Plant materials which have been cut back from larger plants will not meet certain specification requirements will be rejected.
- (3) Plant material shall have normal, well developed branches and shall be vigorous plants, free from defects, decay, burs, damaged roots, sun-scaled injuries, abrasion of the ball, plant diseases, insect pest, egg, larvae, and all forms of infestation or objectionable infestations.

- Planting Soil:**
- A. All plant material, unless indicated otherwise, shall be installed with a planting soil composed of sandy loam (80% sand) and 20% topsoil typical of the locality. The soil must be taken from ground that has never been stripped, with a slight acid reaction (pH to 6.5 pH) and without an excess of calcium or carbonate. Soil shall be delivered in a loose friable condition.

- Water:**
- A. Potable, from municipal water supplies or other sources which are approved by a public health department.
- Mulch:**
- A. Mulch shall be:
- (1) "Florimulch"
- Fertilizer:**
- A. New and existing Trees and Palms: Fertilize with 8-2-2 palm fertilizer with micronutrients at a rate of 1/2 lb. per 1000 sq. ft. of area.
- B. New and existing Shrubs, and Groundcover: Fertilize with 8-2-2 palm fertilizer with micronutrients at a rate of 1/2 lb. per 1000 sq. ft. of area.
- C. Annuals: Fertilize with Osmocote - Sierra blend 14-14-14 or approved equal.

- Composition and Quality:** All fertilizer shall be uniform in composition and dry. Granular fertilizer shall be free flowing and delivered in unopened bags. All bags, containers or boxes shall be fully labeled with the manufacturer's analysis.
- Fertilizer:**
- E. All fertilizer shall comply with the State of Florida Fertilizer laws.

- Cleanup:**
- A. Disposal of Trash: All debris and other objectionable material created through planting operation and landscape construction shall be removed completely on a daily basis from the job or as directed by the Landscape Architect. Any debris shall be placed in plastic bags and sealed which have been strewn with soil, sod, astax, fertilizer, or other debris shall be thoroughly swept.
- B. Excess Fill: All excess fill which results from the installation of the project shall remain the property of the Owner and remain on the project at the option of the Owner. All excess fill which the Owner does not wish shall be removed and disposed of from the project at no additional cost. No excess fill shall be removed or disposed of from the site until approved by the Owner or Landscape Architect. Excess fill shall be disposed of as directed.

- Protection:**
- A. Responsibility for Protection and Restoration of Property: The Contractor shall be responsible for all damage or injury to person or property.
- B. Protection Against Mechanical Damage: The Contractor's responsibility for protection against mechanical damage shall include providing protection from vehicles and providing warning signs and barricades as might be necessary and he or she shall repair, restore or replace all property which becomes damaged as a result of any negligence of the Contractor or his or her employees in complying with these requirements.

- Completion and Final Acceptance:**
- A. Upon written notice from the Contractor of the prescriptive completion of the entire project, the Owner and the Landscape Architect, along with other appropriate parties, will make an inspection within 48 hours after the written notice. If all construction provided for and compensated by the contract is found to be completed in accordance with the Plans and Specifications, such inspection shall constitute the final inspection. The Contractor shall be notified in writing of final acceptance as of the date of the final inspection.
- B. If, however, the inspection mentioned in paragraph A, above, discloses any work in which one or more items are not satisfactory, final acceptance shall not be given and the Owner and/or Landscape Architect will give the Contractor the necessary instructions or "punch lists". Upon completion of work, another inspection will be made which shall constitute the final inspection provided the work has been satisfactorily completed. In such event, the Owner or his representative shall make the final acceptance and notify the Contractor in writing of the final acceptance as of the date of the final inspection.

- Delivery, Handling and Storage:**
- A. Delivery and Handling:
- (1) Movement of nursery stock shall comply with all Federal, State, and local laws, regulations, ordinances, codes, etc.
- (2) Protect against delivery to prevent damage to root ball or desiccation of leaves. Remove unacceptable plant materials immediately from the job site. Maintain and protect while stored at the site.
- (3) Transport materials on vehicles large enough to allow plants not to be so crushed and supported. Plants shall be covered to prevent wind damage during transit.
- B. Sod:
- (1) Deliver sod on pallets with root system protected from exposure to wind and sun. Deliver sod in quantities capable of being installed within 48 hours of cutting.

- Submittals & Approvals:**
- A. Written request for approval to substitute a plant species or a plants designation (B&B, UB&B, CG, etc.), type, grade, quantity, size, quantity, etc. due to the non-availability of the material specified. Approval must be given by the Landscape Architect before the material is delivered and installed on the project. The Contractor must provide written proof that the specified plant material is unavailable.
- B. Any request for the approval of an equal shall be in writing. Approval shall be given by the Landscape Architect before the material is delivered and installed on the project.
- C. Submit three prints of shop drawings for any special conditions not covered in the details indicated. This shall be for approval by the Landscape Architect before they are implemented in the project.
- D. If requested by the Owner or Landscape Architect submit a schedule of all specimen plant material and collected plant material indicating the sources and suppliers of these materials and their locations for approval by the Landscape Architect before they are delivered and installed on the project. Also, two color photographs of each different item, showing different side views of the item shall be submitted with the schedule. Additional color photographs shall be submitted, if requested.
- E. If requested by the Owner or Landscape Architect, submit a letter indicating the sources or suppliers of all sod and the grade to be applied for approval by the Landscape Architect before it is delivered and installed on the project.

- Staking and Guying:**
- A. Staking and guying shall be the responsibility of the Landscape Contractor. Staking and guying shall not be attached directly to the plant material with nails. Also, battens used in staking and guying shall not be attached to the plant material with nails. Any method of staking and guying other than those listed in the details, shall require approval from the Landscape Architect prior to their installation. Under no circumstances will approval be given to allow the plunging, burying, or planting of trees or palms so that the top of the grade, in order to eliminate the need or requirement of staking or guying.
- B. The Contractor is responsible for performing all staking and guying in accordance with the Florida Department of Agriculture's "Grades and Standards for Nursery Plants".
- C. The decision of whether to stake or guy shall be left to the discretion of the Contractor, provided it is not required according to local regulations, ordinances and codes requirements. However, a Contractor's recommendation to stake or guy shall not relieve him or her of the responsibility of resetting plant material if it blows, falls or leans over. Also, it will not relieve the Contractor of the responsibility of the material dies as a result of blowing, falling or leaning over.

- Excavation:**
- A. Utilities (Above Ground and Underground):
- (1) The work area may have existing utilities, such as, but not limited to, electric, gas, water, sewer, telephone and cable. The location of some of these existing utilities have been indicated on the Plans.
- Grades:**
- A. It shall be the responsibility of the Contractor to provide the final grading so the final level for planting areas conforms to surrounding grades and is at the proper elevation with relation to the adjacent structures or other site conditions, unless indicated otherwise on the plans.
- B. Plant Area Next to Pavement: All planting areas next to pavement areas, such as, but not limited to, curbs, roads, drives, walkways and patios, shall be graded so that the TOP OF THE MULCH IS 1 INCH BELOW THE TOP OF THE PAVEMENT AREA or as indicated otherwise on the plans.

- Preparation:**
- A. Staking Plant Location: Stake or mark plant material location prior to final excavation, based on information from the plans.
- (3) Edge and row sod once a week.
- (4) Edge and used all shrubs, groundcover and flower beds once a week.
- (5) Remove all litter once a week.
- (6) Spraying and Dusting: Contractor shall do all seasonal spraying and/or dusting of all planting, as needed, for complete control of pests and diseases. The materials and methods shall be in accordance with the highest standard horticultural practices and as recommended by the County Agent, and approved by the Landscape Architect, prior to implementation.
- (7) Sod: After the sod has been laid, tamped and top dressed, all areas and parts of areas which fail to show uniform growth and health shall be resodded, repatched, if necessary, until all sodded areas are covered with a satisfactory lawn. Damage resulting from erosion, gullies, washouts, or other causes shall be repaired by filling with topsoil, tamping, re-fertilizing, and re-seeding to the Contractor at his or her expense.
- (8) Protection: Plant material shall be protected against trampling and damage. If any plant material is trampled or injured, they shall be treated or replaced as directed and in compliance with the Specifications at no additional cost. No work shall be done until or over planting areas or adjacent to plants without proper adequate and protection.
- (9) Keep sidewalks, curbs and gutters, driveways, parking areas, streets, terraces, decks, and pavements free of plant outtings, debris and stains.
- D. Material rejected during the course of construction shall be placed in a partial list of certain responsibilities. It is not a complete list, but only a summary of certain responsibilities.
- A. The Contractor is responsible for the entire project prior to written acceptance.
- B. The Contractor is responsible for safety on and off the Job site.
- C. Maintenance Prior to Final Acceptance:
- (1) Maintenance shall begin immediately after each plant is planted and continue until final acceptance.
- (2) Plant maintenance shall include watering, mowing, edging, pruning, weeding, cultivating, repair of erosion, mounding, lighting and electrical wiring, stakes, braces, etc., replacement of sick or dead plants, replacement of sod areas that do not become established, resetting plants to proper grades or upright position, maintenance of the watering system, litter removal, and all other care needed for proper growth of the plants.
- (3) Immediately after planting, each plant shall be staked and the watering period shall continue until final acceptance. Refer to the heading "Staking" which is in Part 3 of these Specifications, for additional requirements.
- (4) All plant material shall be seeded once a week. In the event that weeds or other undesirable vegetation becomes prevalent to such an extent that they threaten plant material, the weeds shall be removed as directed by the Landscape Architect. If necessary, the Contractor shall use mulch sand and/or planting soil shall be replaced as needed to eliminate weeds or undesirable vegetation at the expense of the Contractor.

Guarantee:

- A. The guarantee shall not begin until the day final written acceptance is given.
- B. All plant material, except sod, trees and palms, shall be guaranteed for a minimum of 1 year from the time of final acceptance. All sod shall be guaranteed for a minimum of 60 days from the time of final acceptance. All trees and palms shall be guaranteed for one year from the time of final acceptance.
- C. The guarantee shall be null and void for plant material which is damaged or dies as a result of "Acts of God" limited to hail, freeze, lightning and winds which exceed hurricane force, providing the plant was in a healthy growing condition prior to these "Acts of God".
- D. At the option of the Owner, and inspections may be made at the end of the guarantee period, but prior to the last day of the guarantee period.
- Replacement:**
- A. The guaranteeing of a plant material shall be construed to mean the complete and immediate replacement of plant material within 3 calendar days if it is:
- (1) Not in a healthy growing condition and thus renders it below the minimum quality indicated in the Specifications.
- (2) There is a question to its ability to survive after the end of the guarantee period that would render it below the minimum quality indicated in the Specifications.
- (3) It is dead.
- (4) The 3 calendar days may be extended due to seasonal conditions, availability preparation time such as root pruning, etc., only if approved by the Landscape Architect in advance. The extended time shall be negotiated between all parties concerned, but must receive final approval by the Landscape Architect.
- C. Size, Quality, and Grade:
- (1) Replacement plant material shall be of the same species quality and grade as that of the plant to be replaced. The size of the replacement shall not necessarily be the required elevation depth for the plant hole, in order to allow initial planting. The replacement shall be of equal size to the plant to be replaced at the time it has been determined that it must be replaced.

- Substitutions:**
- A. When the specific plant designation (B&B, UB&B, CG, etc.), type, grade, quality, size, quantity, etc. of a material is not available, the Contractor shall submit a written request, to the Owner or the Landscape Architect, for a substitution along with written, documented proof that the plant designation (B&B, UB&B, CG, etc.), type, grade, quality, size, quantity, etc. of material is not available. The Landscape Architect shall approve all substitutions before they are delivered and installed. Do not deliver or install any material which is anticipated to be a substitute, before it has been submitted in writing and approved as a substitute by the Landscape Architect. The Contractor shall not receive final approval by the Landscape Architect before they are delivered and installed on the project. Also, two color photographs of each different item, showing different side views of the item shall be submitted with the schedule. Additional color photographs shall be submitted, if requested.
- E. If requested by the Owner or Landscape Architect, submit a letter indicating the sources or suppliers of all sod and the grade to be applied for approval by the Landscape Architect before it is delivered and installed on the project.

- Spacing of Groundcover & Shrubs:** The location of a planting bed (shrub or groundcover) next to another bed, walkway, structure, etc., shall have the plants along the perimeter spaced so that the plants can mature properly without growing into the other bed, walkway, structure, etc.
- C. The rootballs of B&B plants which cannot be planted immediately shall be covered with moist soil or mulch to insure protection from drying winds and sun. All plants shall be maintained as necessary until planting.
- D. Subsurface Conditions: Some or all work areas may be completed and/or contain existing utilities, such as, but not limited to, electric, gas, water, sewer, telephone and cable. The Contractor shall be responsible for locating and marking all utilities, structures, etc., before work is commenced in any particular location.
- (2) The Contractor shall take immediate steps to repair, replace, or relocate any existing utilities, structures, etc., or other facilities which are disrupted due to his or her additional outside services which may be necessary to complete the work on the project. The Contractor shall be responsible for making adequate drainage in these areas and shall remove the existing drainage as required, by such means as auguring, drilling or rototilling. If necessary, excavate to a depth beyond the required elevation depth for the plant hole, in order to insure proper vertical drainage necessary for plant survival and growth.
- E. Remove undesirable existing vegetation present on the project by use of chemicals and/or mechanical means which are acceptable to the local health and safety authorities. Apply chemicals as recommended by the manufacturer. Exercise care to avoid any release of the chemicals which cause detrimental residual conditions. Care shall also be used so that any final grades which have been established are not altered.

- Excavation of Plant Holes:**
- (1) General:
- a. Excavation of plant holes shall be roughly cylindrical in shape with the sides approximately vertical. The Landscape Architect reserves the right to adjust the size and shape of the plant hole and the location of the plant in the hole to compensate for anticipated structures or other site conditions, unless indicated otherwise on the plans.
- b. The excavated material from the plant holes shall not be used to backfill around the plant material. Such material shall be disposed of either on the project site or off the site, as directed by the Landscape Architect.

- Sod:**
- (1) Sod Preparation: Within 24 hours prior to placing sod, prepare the soil in the following manner:
- a. Uniformly apply formula 8-8-8 fertilizer over the area at a rate of 25 pounds per 1000 square feet.
- b. Remove stones and foreign matter over two inches in diameter from the top two inches of soil.
- c. Grade the sod area so that the top of the sod will be at finished grade after rolling and tamping.

- General:** The Contractor shall lay out on the ground the location for the plants and outlines of areas to be planted and obtain approval of the Landscape Architect before excavation is begun. The Landscape Architect may adjust the location of specific plant materials prior to planting.

- Groundcovers:**
- (1) Sod Preparation: Within 24 hours prior to placing sod, prepare the soil in the following manner:
- a. Uniformly apply formula 8-8-8 fertilizer over the area at a rate of 25 pounds per 1000 square feet.
- b. Remove stones and foreign matter over two inches in diameter from the top two inches of soil.
- c. Grade the sod area so that the top of the sod will be at finished grade after rolling and tamping.

- Shrubs:**
- (1) Sod Preparation: Within 24 hours prior to placing sod, prepare the soil in the following manner:
- a. Uniformly apply formula 8-8-8 fertilizer over the area at a rate of 25 pounds per 1000 square feet.
- b. Remove stones and foreign matter over two inches in diameter from the top two inches of soil.
- c. Grade the sod area so that the top of the sod will be at finished grade after rolling and tamping.

Permits and Codes:

- A. The Contractor shall procure all necessary permits to accomplish all of the work.
- B. The Contractor is responsible for performing all work in accordance with all applicable regulations, ordinances and codes requirements from the appropriate city, county, state and/or Federal jurisdiction the project is located in.
- Changes and Additional Work:**
- A. The Contractor shall not start on any changes or additional work in the project until a written agreement setting forth the adjusted contract amount has been executed by the Owner and the Contractor. Any work performed on any changes or additional work prior to the execution of a written agreement may or may not be compensated for.
- Job Site, "Project Site Etc.":**
- A. The words "Job Site", "Project Site", "Job", "Project" and "Site" shall be synonymous with one another when used in these documents.
- Safety On and Off the Job Site:**
- A. In performing the scope of work, all safety on or off the job site shall be the sole responsibility of the Contractor. The Landscape Architect shall not be responsible for safety on or off the job site.

- Permits and Codes:**
- A. The Contractor shall procure all necessary permits to accomplish all of the work.
- B. The Contractor is responsible for performing all work in accordance with all applicable regulations, ordinances and codes requirements from the appropriate city, county, state and/or Federal jurisdiction the project is located in.
- Changes and Additional Work:**
- A. The Contractor shall not start on any changes or additional work in the project until a written agreement setting forth the adjusted contract amount has been executed by the Owner and the Contractor. Any work performed on any changes or additional work prior to the execution of a written agreement may or may not be compensated for.
- Job Site, "Project Site Etc.":**
- A. The words "Job Site", "Project Site", "Job", "Project" and "Site" shall be synonymous with one another when used in these documents.
- Safety On and Off the Job Site:**
- A. In performing the scope of work, all safety on or off the job site shall be the sole responsibility of the Contractor. The Landscape Architect shall not be responsible for safety on or off the job site.

- Permits and Codes:**
- A. The Contractor shall procure all necessary permits to accomplish all of the work.
- B. The Contractor is responsible for performing all work in accordance with all applicable regulations, ordinances and codes requirements from the appropriate city, county, state and/or Federal jurisdiction the project is located in.
- Changes and Additional Work:**
- A. The Contractor shall not start on any changes or additional work in the project until a written agreement setting forth the adjusted contract amount has been executed by the Owner and the Contractor. Any work performed on any changes or additional work prior to the execution of a written agreement may or may not be compensated for.
- Job Site, "Project Site Etc.":**
- A. The words "Job Site", "Project Site", "Job", "Project" and "Site" shall be synonymous with one another when used in these documents.
- Safety On and Off the Job Site:**
- A. In performing the scope of work, all safety on or off the job site shall be the sole responsibility of the Contractor. The Landscape Architect shall not be responsible for safety on or off the job site.

- Permits and Codes:**
- A. The Contractor shall procure all necessary permits to accomplish all of the work.
- B. The Contractor is responsible for performing all work in accordance with all applicable regulations, ordinances and codes requirements from the appropriate city, county, state and/or Federal jurisdiction the project is located in.
- Changes and Additional Work:**
- A. The Contractor shall not start on any changes or additional work in the project until a written agreement setting forth the adjusted contract amount has been executed by the Owner and the Contractor. Any work performed on any changes or additional work prior to the execution of a written agreement may or may not be compensated for.
- Job Site, "Project Site Etc.":**
- A. The words "Job Site", "Project Site", "Job", "Project" and "Site" shall be synonymous with one another when used in these documents.
- Safety On and Off the Job Site:**
- A. In performing the scope of work, all safety on or off the job site shall be the sole responsibility of the Contractor. The Landscape Architect shall not be responsible for safety on or off the job site.

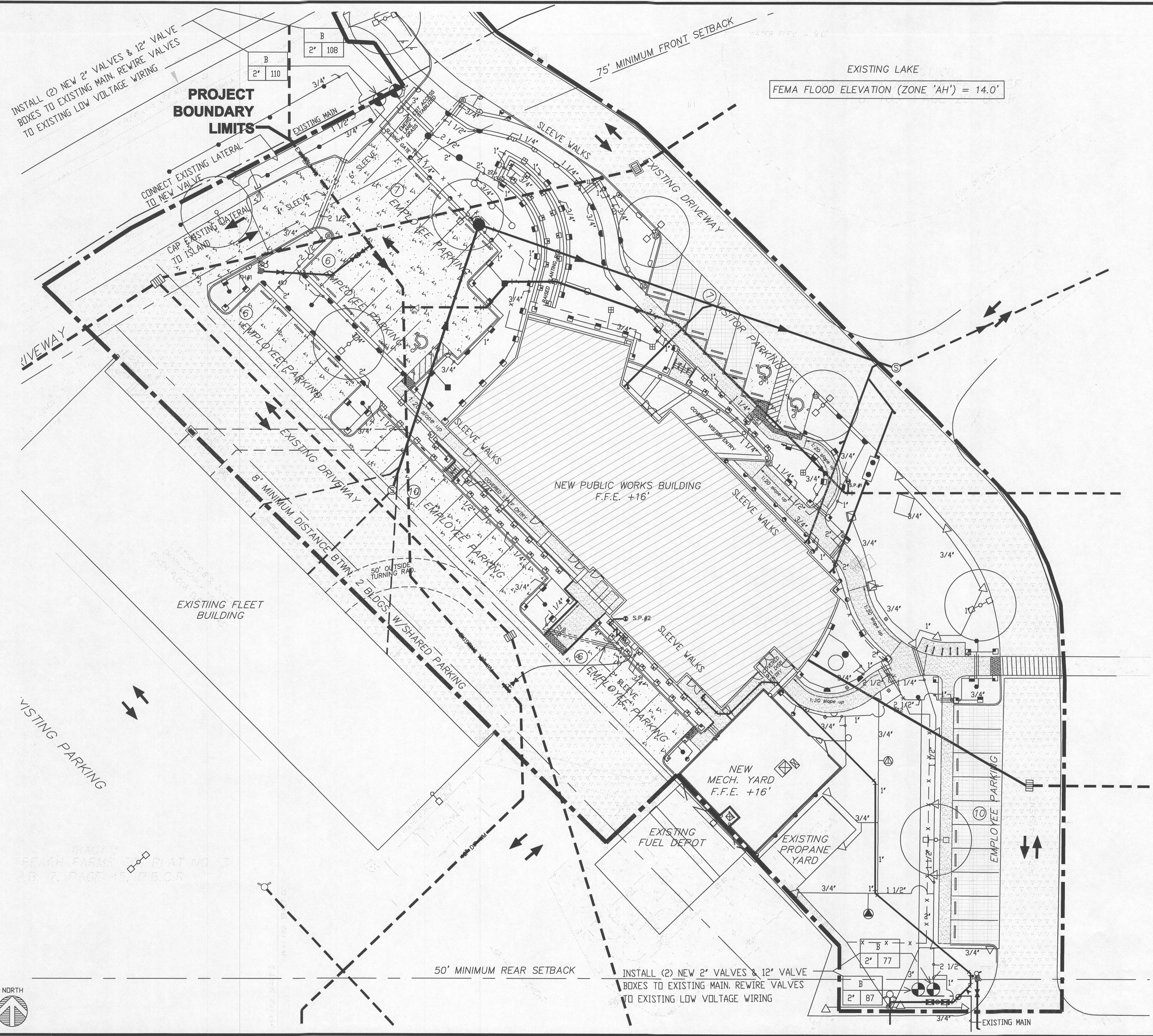
- Permits and Codes:**
- A. The Contractor shall procure all necessary permits to accomplish all of the work.
- B. The Contractor is responsible for performing all work in accordance with all applicable regulations, ordinances and codes requirements from the appropriate city, county, state and/or Federal jurisdiction the project is located in.
- Changes and Additional Work:**
- A. The Contractor shall not start on any changes or additional work in the project until a written agreement setting forth the adjusted contract amount has been executed by the Owner and the Contractor. Any work performed on any changes or additional work prior to the execution of a written agreement may or may not be compensated for.
- Job Site, "Project Site Etc.":**
- A. The words "Job Site", "Project Site", "Job", "Project" and "Site" shall be synonymous with one another when used in these documents.
- Safety On and Off the Job Site:**
- A. In performing the scope of work, all safety on or off the job site shall be the sole responsibility of the Contractor. The Landscape Architect shall not be responsible for safety on or off the job site.

- Permits and Codes:**
- A. The Contractor shall procure all necessary permits to accomplish all of the work.
- B. The Contractor is responsible for performing all work in accordance with all applicable regulations, ordinances and codes requirements from the appropriate city, county, state and/or Federal jurisdiction the project is located in.
- Changes and Additional Work:**
- A. The Contractor shall not start on any changes or additional work in the project until a written agreement setting forth the adjusted contract amount has been executed by the Owner and the Contractor. Any work performed on any changes or additional work prior to the execution of a written agreement may or may not be compensated for.
- Job Site, "Project Site Etc.":**
- A. The words "Job Site", "Project Site", "Job", "Project" and "Site" shall be synonymous with one another when used in these documents.
- Safety On and Off the Job Site:**
- A. In performing the scope of work, all safety on or off the job site shall be the sole responsibility of the Contractor. The Landscape Architect shall not be responsible for safety on or off the job site.

- Permits and Codes:**
- A. The Contractor shall procure all necessary permits to accomplish all of the work.
- B. The Contractor is responsible for performing all work in accordance with all applicable regulations, ordinances and codes requirements from the appropriate city, county, state and/or Federal jurisdiction the project is located in.
- Changes and Additional Work:**
- A. The Contractor shall not start on any changes or additional work in the project until a written agreement setting forth the adjusted contract amount has been executed by the Owner and the Contractor. Any work performed on any changes or additional work prior to the execution of a written agreement may or may not be compensated for.
- Job Site, "Project Site Etc.":**
- A. The words "Job Site", "Project Site", "Job", "Project" and "Site" shall be synonymous with one another when used in these documents.
- Safety On and Off the Job Site:**
- A. In performing the scope of work, all safety on or off the job site shall be the sole responsibility of the Contractor. The Landscape Architect shall not be responsible for safety on or off the job site.

- Permits and Codes:**
- A. The Contractor shall procure all necessary permits to accomplish all of the work.
- B. The Contractor is responsible for performing all work in accordance with all applicable regulations, ordinances and codes requirements from the appropriate city, county, state and/or Federal jurisdiction the project is located in.
- Changes and Additional Work:**
- A. The Contractor shall not start on any changes or additional work in the project until a written agreement setting forth the adjusted contract amount has been executed by the Owner and the Contractor. Any work performed on any changes or additional work prior to the execution of a written agreement may or may not be compensated for.
- Job Site, "Project Site Etc.":**
- A. The words "Job Site", "Project Site", "Job", "Project" and "Site" shall be synonymous with one another when used in these documents.
- Safety On and Off the Job Site:**
- A. In performing the scope of work, all safety on or off the job site shall be the sole responsibility of the Contractor. The Landscape Architect shall not be responsible for safety on or off the job site.

- Permits and Codes:**
- A. The Contractor shall procure all necessary permits to accomplish all of the work.
- B. The Contractor is responsible for performing all work in accordance with all applicable regulations, ordinances and codes requirements from the appropriate city, county, state and/or Federal jurisdiction the project is located in.
- Changes and Additional Work:**
- A. The Contractor shall not start on any changes or additional work in the project until a written agreement setting forth the adjusted contract amount has been executed by the Owner and the Contractor. Any work performed on any changes or additional work prior to the execution of a written agreement may or may not be compensated for.
- Job Site, "Project Site Etc.":**
- A. The words "Job Site", "Project Site", "Job", "Project" and "Site" shall be synonymous with one another when used in these documents.
- Safety On and Off the Job Site:**
- A. In performing the scope of work, all safety on or off the job site shall be the sole responsibility of the Contractor. The Landscape Architect shall not be responsible for safety on or off the job site.



IRRIGATION PLAN
SCALE: 1" = 20'-0"

dave bodker
landscape architecture/planning inc.
601 n. congress ave., suite 102-g
delray beach, florida 33445
561-276-6311
#LA0000999
job# 10710

Walters • Zackria Associates
ARCHITECTURE • PLANNING • DESIGN
ROBERT S. WALTERS, AIA - FL AR 8880
ABRARS H. ZACKRIA, CSI - FL AR 9150
620 BE 1ST STREET FT. LAUDERDALE FL 33301
(954) 522-4123 FAX: (954) 522-4128
DESIGNED BY WALTERS & ZACKRIA ASSOCIATES, P.L.L.C. AND ARCHITECTURE/PLANNING/DESIGN BY DAVE BODKER, P.L.L.C. ALL RIGHTS RESERVED. NO PART OF THIS DOCUMENT IS TO BE REPRODUCED OR TRANSMITTED IN ANY FORM OR BY ANY MEANS, ELECTRONIC OR MECHANICAL, INCLUDING PHOTOCOPYING, RECORDING, OR BY ANY INFORMATION STORAGE AND RETRIEVAL SYSTEM, WITHOUT THE WRITTEN PERMISSION OF WALTERS & ZACKRIA ASSOCIATES, P.L.L.C. AND ARCHITECTURE/PLANNING/DESIGN BY DAVE BODKER, P.L.L.C.

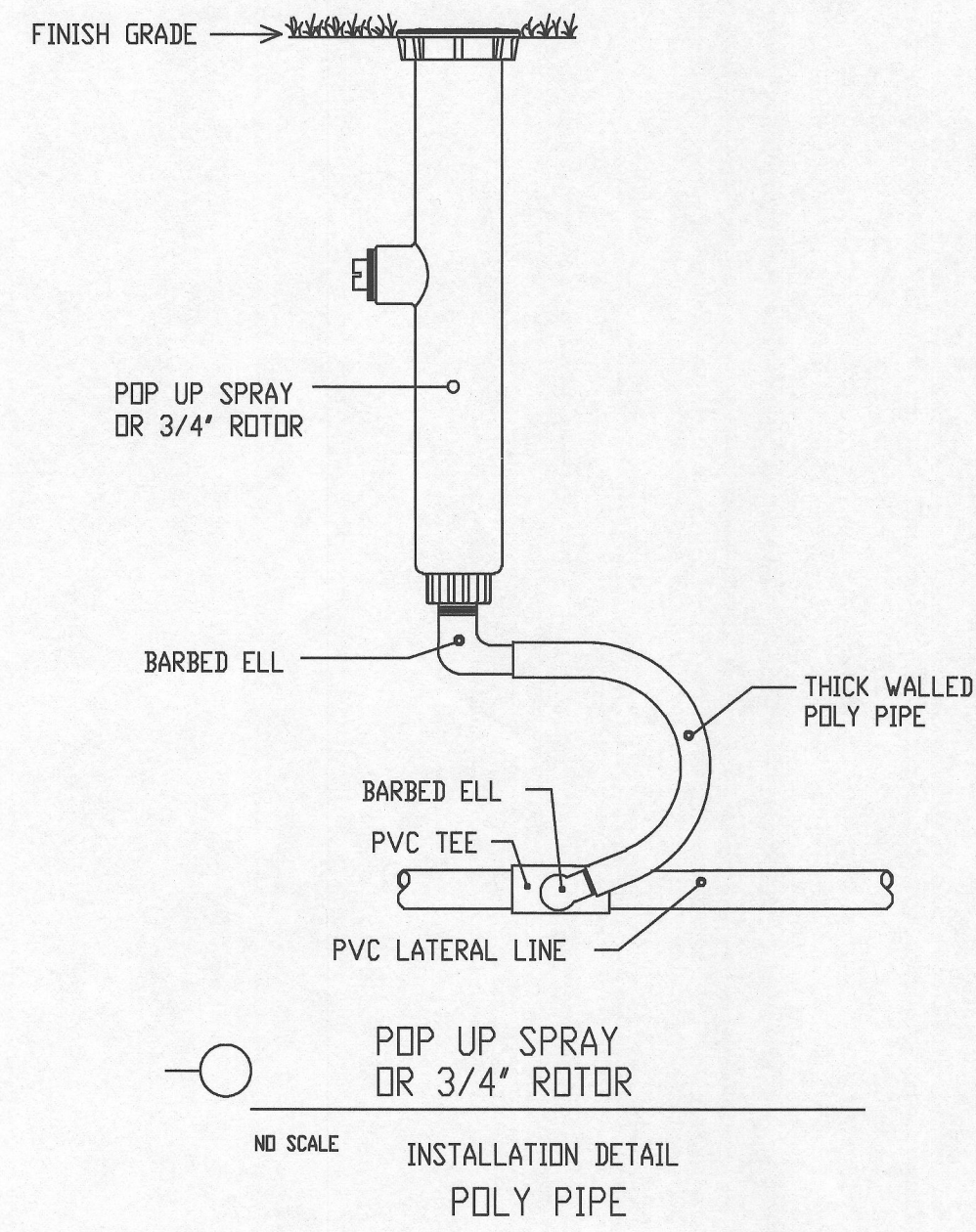
CITY OF COCONUT CREEK
UTILITIES & ENGINEERING DIVISION
PUBLIC WORKS BUILDING
4800 WEST COPANS ROAD, COCONUT CREEK, FLORIDA 33063

DRAWN BY: RJH
CHECKED BY: RJH
DATE: 8-11-11
REVISIONS:
▲
▲
▲
▲

1003
SHEET
1-1
IRRIGATION PLAN

NOTES:

1. PIPING:
 - MAIN LINES: EXISTING PVC
 - ZONE LINES: PVC, 1/2" IS NOT USED, 3/4" & 1" = SDR 21, CLASS 200
 - 1 1/4" & LARGER = SDR 26, CLASS 160 OR GREATER
 - SLEEVES: SCH. 40 PVC
 - FITTINGS: ZONE LINES: SCH. 40 PVC
 - FABRICATION: SQUARE CUT, CLEAN AND PRIME ALL JOINTS. USE GREY PVC CEMENT AND PURPLE PRIMER. FULLY ENGAGE ALL JOINTS. ALL FABRICATION SHALL BE TO MANUFACTURERS SPECS.
 - ALLOW ALL MAIN LINES TO CURE FOR 24 HOURS BEFORE PRESSURING.
 - ALL PIPE, FITTINGS, AND SOLVENTS TO CONFORM TO LATEST ASTM SPECS.
2. DEPTH OF LINES:
 - SLEEVING UNDER PAVEMENT = 24" DEEP, MIN.
 - ZONE LINES = 12" DEEP MIN. FOR 1 1/2" & SMALLER AND 15" DEEP FOR 2" & GREATER
3. CONTROL WIRES: EXISTING LOW VOLTAGE WIRING TO BE RECONNECTED USING DBY OR EQUAL TYPE CONNECTORS.
4. BACKFILL ALL TRENCHES FREE OF DEBRIS, COMPACT TO ORIGINAL DENSITY, FLUSH ALL LINES, USE SCREENS IN ALL HEADS, ADJUST HEADS FOR PROPER COVERAGE AVOIDING EXCESS WATER ON WALLS, WALKS, PAVING, ETC.
5. ALL DETAILS ARE GRAPHICALLY SHOWN ONLY. ALL QUANTITIES SHALL BE VERIFIED BY CONTRACTOR PRIOR TO INSTALLATION. THIS SHALL BE THE CONTRACTORS RESPONSIBILITY TO ASSURE COMPLETE OVERLAPPING COVERAGE. ANY DISCREPANCIES SHALL BE REPORTED TO THE OWNER AND LANDSCAPE ARCHITECT BEFORE PROCEEDING. CODES AND LOCAL REGULATIONS SHALL TAKE PRECEDENCE OVER THESE PLANS. THE LANDSCAPE ARCHITECT/DESIGNER RESERVES THE RIGHT TO MAKE MINOR FIELD CHANGES. THE CONTRACTOR MAY FIELD ADJUST SPRAY NOZZLE SELECTION TO PROVIDE PROPER COVERAGE.
6. CONTRACTOR SHALL VERIFY ALL UNDERGROUND UTILITIES PRIOR TO COMMENCEMENT OF WORK.



SPRINKLER LEGEND

SYM.	TYPE	MODEL #	QUANTITY
△	RAINBIRD 3/4" POP UP ROTOR	#5006-NOZZLE BELOW	17
▲	" " " " "	#5006-PC-3.0	1
⊙	" " " " "	#5006-FC-6.0	1
⊚	" " " " "	#5006-FC-3.0LA	1
⊠	" " " " "	#5012-PC-3.0	2
⊕	RAINBIRD 4" POP UP SPRAY	#1806 - NOZZLE BELOW	83
⊖	" " " " "	" -15"VAN	
●	" " " " "	" -15"F	
◐	" " " " "	" -15"H	
◑	" " " " "	" -15"Q	
⊖	" " " " "	" -12"VAN	
○	" " " " "	" -12"F	
◐	" " " " "	" -12"H	
◑	" " " " "	" -12"Q	
⊖	" " " " "	" -10"VAN	
○	" " " " "	" -10"F	
◐	" " " " "	" -10"H	
◑	" " " " "	" -10"Q	
⊖	" " " " "	" -8"H	
○	" " " " "	" -8"Q	
●	" " " " "	" -4"SST	
●	" " " " "	" -4"EST	
⊖	RAINBIRD 12" POP UP SPRAY	#1812 - NOZZLE BELOW	134
⊕	" " " " "	" -12"VAN	
●	" " " " "	" -12"F	
◐	" " " " "	" -12"H	
◑	" " " " "	" -12"Q	
⊖	" " " " "	" -10"VAN	
○	" " " " "	" -10"F	
◐	" " " " "	" -10"H	
◑	" " " " "	" -10"Q	
⊖	" " " " "	" -8"H	
○	" " " " "	" -8"Q	
●	" " " " "	" -4"SST	
●	" " " " "	" -4"EST	
●	RAINBIRD FLOOD BUBBLER	#1404	15

NOTE: USE SCREENS IN ALL HEADS. CONTRACTOR TO VERIFY AND IS RESPONSIBLE FOR COMPLETE COVERAGE

MATERIAL LEGEND

- MAINLINE: EXISTING PVC MAIN W/ LOW VOLTAGE WIRE
- SLEEVES: SCH. 40 PVC PER PLAN
- ALL SLEEVES UNDER WALKS A MIN. 2 PIPE SIZES LARGER THAN CARRIER PIPE.
- WIRE SLEEVES = 2"
- ZONE VALVES: 2" RAINBIRD PEB (SEE DETAIL)
- CONTROLLER I.D.
- G.P.M.
- VALVE SIZE

