

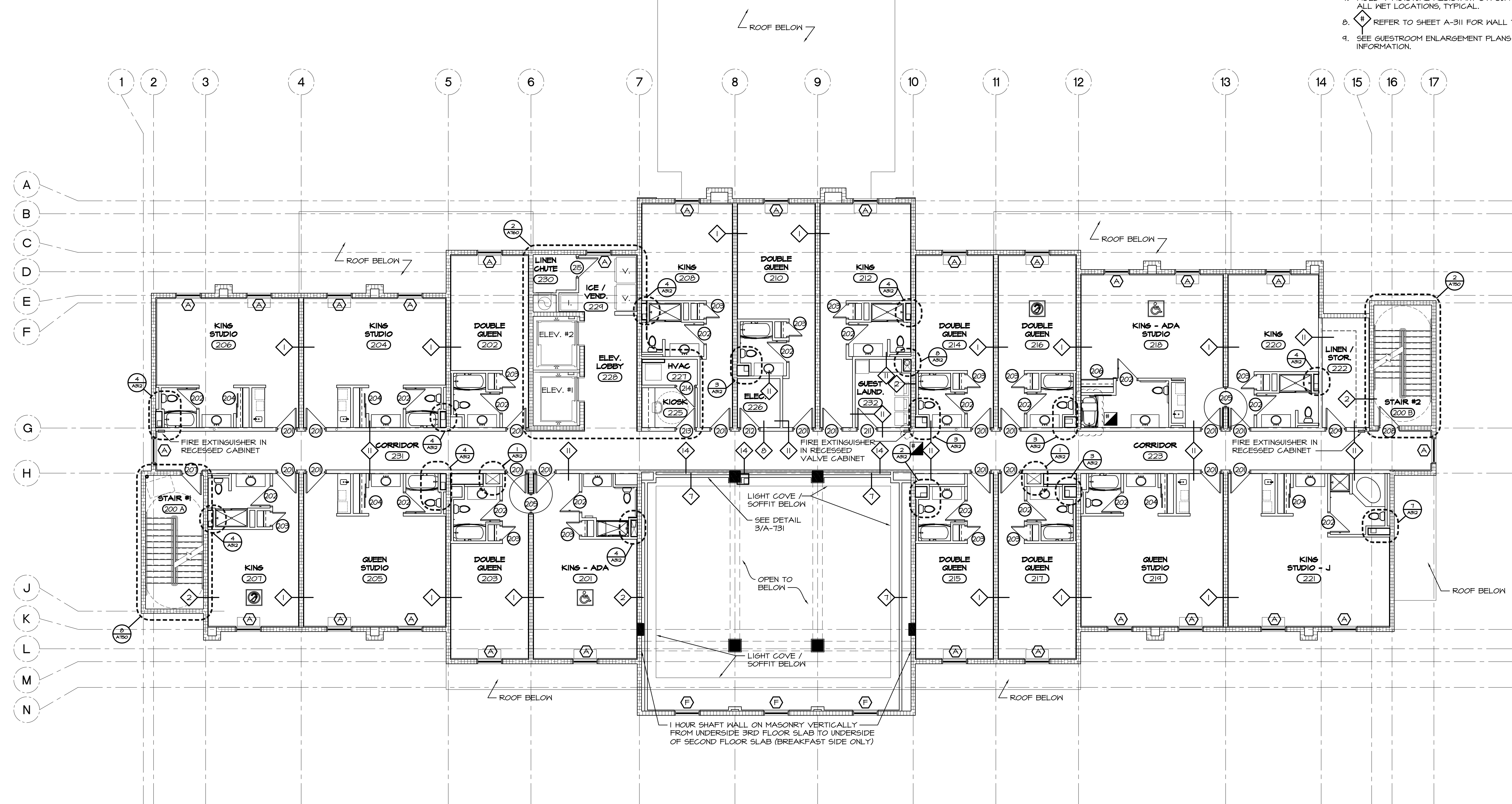
PARTITION LEGEND:

- 1 MASONRY WALL FURRED BOTH SIDES (SEE DETAIL 1/A311)
- 2 MASONRY WALL FURRED ONE SIDE (SEE DETAIL 2/A311)
- 3 MASONRY WALL - NO FURRING (SEE DETAIL 3/A311)
- 4 MASONRY WALL WITH FURRING AND STUCCO (SEE DETAIL 4/A311)
- 5 STUD PARTITION AT EXTERIOR WALL BUILD-OUTS (SEE DETAIL 5/A311)
- 6 FULL HEIGHT STANDARD PARTITION (SEE DETAIL 6/A311)
- 7 FULL HEIGHT PARTITION - DRYWALL ONE SIDE (SEE DETAIL 7/A311)
- 8 FULL HEIGHT SOUND PARTITION (SEE DETAIL 8/A311)
- 9 FULL HEIGHT SOUND PARTITION (SEE DETAIL 9/A311)
- 10 FULL HEIGHT SOUND PARTITION (SEE DETAIL 10/A311)
- 11 1-HR RATED PARTITION (SEE DETAIL 11/A311)
- 12 1-HR RATED PARTITION (SEE DETAIL 12/A311)
- 13 2-HR RATED SHAFT WALL (SEE DETAIL 13/A311)
- 14 3-HR RATED SHAFT WALL (SEE DETAIL 14/A311)
- 15 1-HR RATED PARTITION (SEE DETAIL 15/A311)
- 16 MASONRY WALL STUCCO ONE SIDE (SEE DETAIL 16/A311)


- INDICATES ACCESSIBLE GUESTROOMS WITH MOBILITY FEATURES
- INDICATES GUESTROOMS WITH SLEEPING ACCOMMODATIONS FOR PERSONS WITH HEARING IMPAIRMENTS. VISUAL ALARMS, NOTIFICATION DEVICES, AND TELEPHONES SHALL BE PROVIDED IN CONFORMANCE WITH A.D.A.A.G.

PLAN NOTES:

1. CONTRACTORS TO VERIFY ALL FIELD CONDITIONS PRIOR TO COMMENCEMENT AND REPORT ANY DISCREPANCIES TO THE ARCHITECT.
2. VERIFY DEPTH AND WIDTH OF BUILD OUT REQUIRED FOR RECESSED FIRE EXTINGUISHER AND CABINETS WITH MANUFACTURER.
3. COORDINATE WITH THE OWNER FOR INSTALLATION OF INTERIOR SIGNAGE.
4. ALL PIPE PENETRATIONS THROUGH RATED PARTITIONS MUST MEET UL APPROVED STANDARDS - SUBMIT SYSTEM TO ARCHITECT FOR APPROVAL.
5. PROVIDE FIRE RETARDANT SOLID WOOD BACKING FOR ALL WALLS TO RECEIVE COUNTERS, CABINETS, DOOR STOPS, SINKS, TOILET ACCESSORIES, CHAIR RAILS, AND OTHER RELATED INSTALLATIONS. THE INSTALLATIONS SHALL BE INSPECTED BY THE ARCHITECT PRIOR TO COVERING WITH DRYWALL.
6. PROHIBIT SMOKING BY ALL OCCUPANTS AND USERS AND MAINTAIN ANY EXTERIOR DESIGNATED SMOKING AREAS AT LEAST 25 FEET AWAY FROM THE BUILDING ENTRIES, OUTDOOR AIR INTAKES AND OPERABLE WINDOWS. PROVIDE SIGNS SA300 PEACHTREE "NO SMOKING IN THIS AREA" IN THE LOCATIONS AS DESIGNATED ON THE PLANS.
7. MOLD & MOISTURE RESISTANT GYPSUM BOARD TO BE USED AT ALL WET LOCATIONS, TYPICAL.
8. REFER TO SHEET A-311 FOR WALL TYPES.
9. SEE GUESTROOM ENLARGEMENT PLANS FOR MORE INFORMATION.

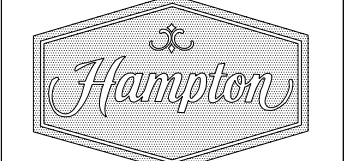


SECOND FLOOR PLAN
1/8"=1'-0"




399 CAMINO GARDENS BLVD.
SUITE 202
BOCA RATON, FLORIDA 33432
V: 561.362.0220
F: 561.362.0224
www.andersonarchitecture.com

eric anderson



HAMPTON INN & SUITES
Developed By:
Coconut Creek Hospitality Group, LLC
North State Road 7
Coconut Creek, Florida

revision:	EIRP REVISIONS / GEN. REV.
date:	08/06/12
date:	02/13/13
date:	03/14/13
date:	03/22/13
commission:	11-033
principal:	ERIC ANDERSON
project manager:	CH
file name:	1033-A-220-FP
date:	09-27-12
title:	OVERALL SECOND FLOOR PLAN



at: 67 A

AA C001997