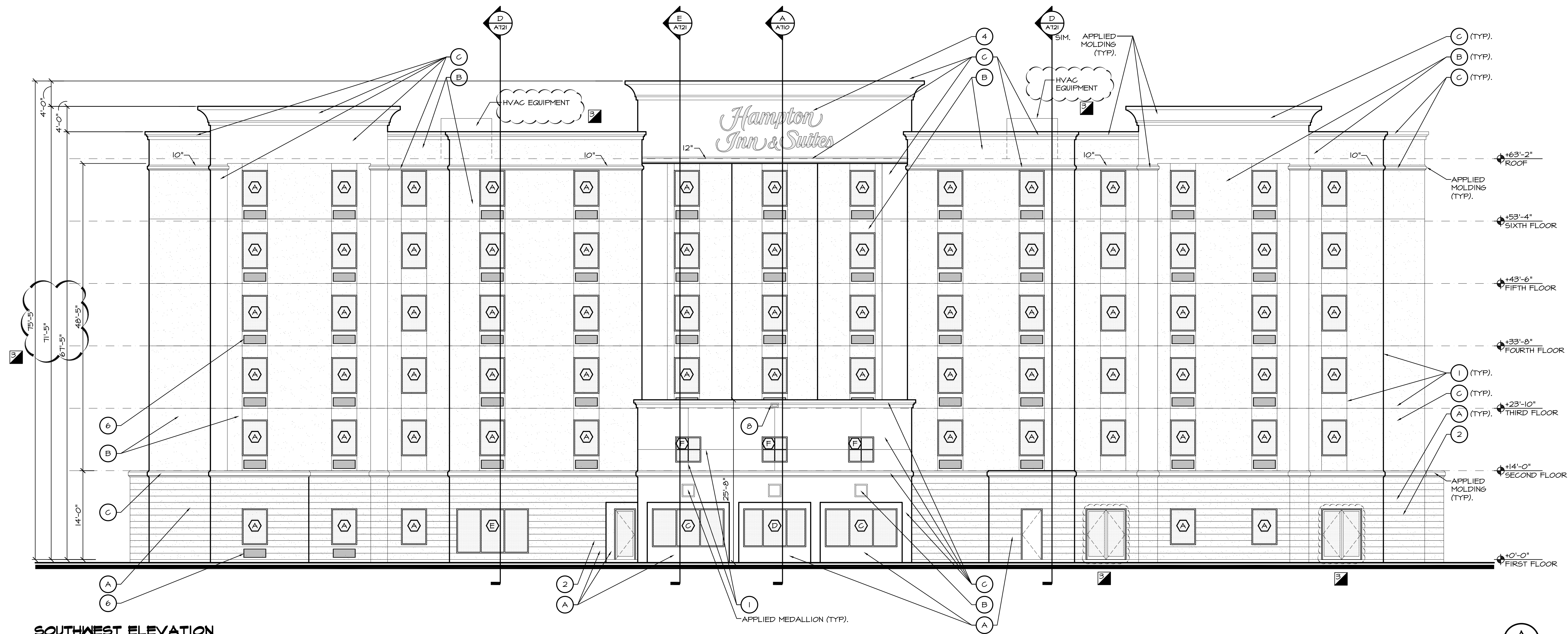


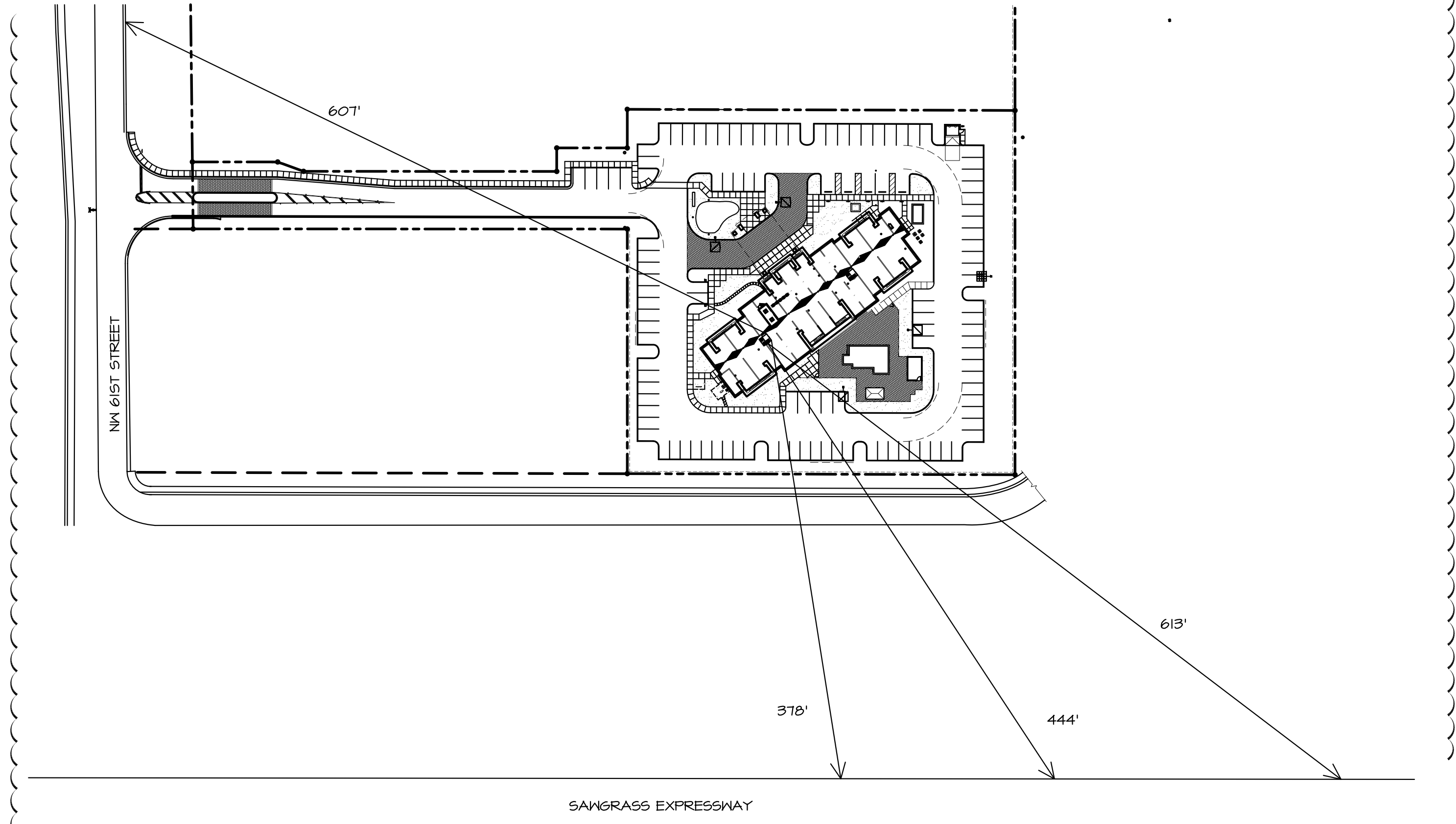
HAMPTON INN & SUITES
Developed By:
Coconut Creek Hospitality Group, LLC
North State Road 7
Coconut Creek, Florida

revision:	11-033
date:	09-27-12
commission:	ERIC ANDERSON
principal:	CH
project manager:	
file name:	1033-A-611-EE
date:	09-27-12
title:	EXTERIOR ELEVATION
at:	67 A



SOUTHWEST ELEVATION

1/8"=1'-0"



SOUTHWEST ELEVATION

1"=80'-0"

ELEVATION SYMBOL LEGEND:

- (A) STUCCO, LIGHT SKIP TROWEL FINISH - COLOR TO MATCH "DRYVIT" COLOR: #342 COCONUT SHELL
- (B) STUCCO, LIGHT SKIP TROWEL FINISH - COLOR TO MATCH "DRYVIT" COLOR: #104 EGGSHELL CREAM
- (C) STUCCO, LIGHT SKIP TROWEL FINISH - COLOR TO MATCH "DRYVIT" COLOR: #310 CHINA WHITE
- (1) 1/4" VINYL CONTROL JOINT - "AMICO" PROD. #AMCJX-500 OR EQUAL - ALIGN WITH TOP OF SLAB
- (2) 1" V-STRUCK JOINT, SEE 5 / A730 FOR DETAIL
- (3) 2" VINYL REVEAL - "AMICO" PRODUCT #AMSR-500-2000 OR EQUAL
- (4) INDIVIDUALLY ILLUMINATED CHANNEL LETTER EXTERIOR SIGNAGE. PROVIDE JUNCTION BOXES AS REQ'D. NOTE: ALL SIGNAGE TO BE SUBMITTED AS A SEPARATE PERMIT - SHOWN FOR REFERENCE ONLY.
- (5) EXTERIOR LIGHT FIXTURE, SEE ELECTRICAL DWGS.
- (6) PTAC LOUVER, "RELIABLE" - NOA No. 11-0126.03, CUSTOM COLOR TO MATCH ADJACENT MATERIAL
- (7) ALUMINUM MECHANICAL LOUVER CUSTOM COLOR TO MATCH ADJACENT SURFACE
- (8) METAL ROOF SCUPPER SEE ROOF PLANS

ELEVATION NOTES:

1. COLORS ARE REFERENCED FROM "DRYVIT" STANDARD COLORS AND ARE TO BE MATCHED USING "SHERWIN-WILLIAMS" PAINT FORMULAS
2. CHANGE IN COLOR OCCURS ON INSIDE CORNER OF CONTROL JOINTS
3. WINDOW FRAMES, PTAC LOUVERS, STOREFRONT, & COPING TO HAVE KYNAR 500 FINISH
4. LOUVERS, GRILLES, AND PIPES TO BE PAINTED TO MATCH ADJACENT MATERIAL COLOR
5. ALL EXTERIOR FLUSH DOORS AND FRAMES, AND LOUVERS AT FIRST FLOOR TO BE PAINTED TO MATCH ADJACENT SURFACE UNLESS NOTED OTHERWISE

