

HAMPTON INN & SUITES  
Developed By:  
Coconut Creek Hospitality Group, LLC  
North State Road 7  
Coconut Creek, Florida

revision:	11-033
date:	09-27-12
drawn:	CH
checked:	
approved:	

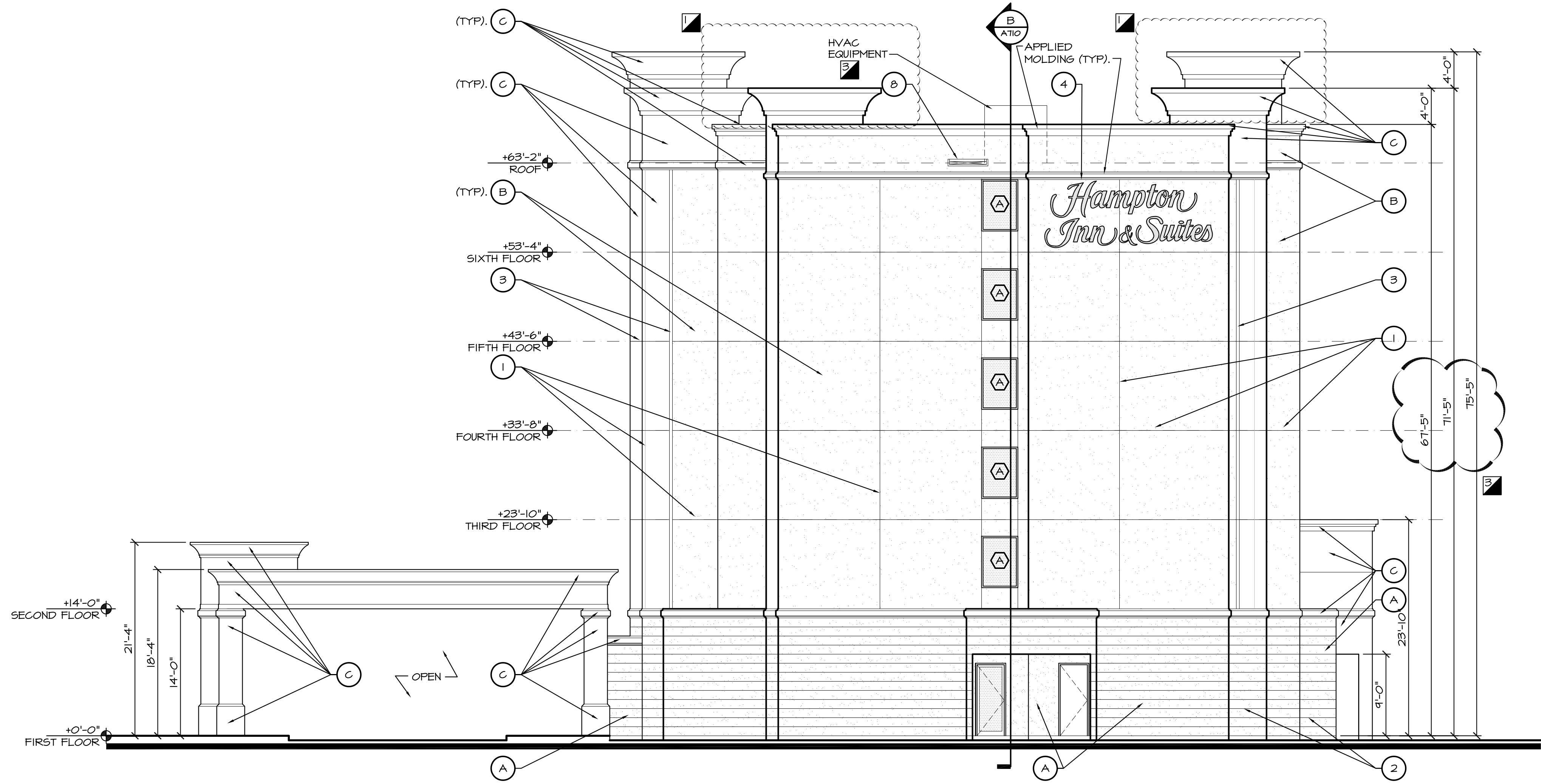
commission: 11-033  
principal: ERIC ANDERSON  
project manager: CH

file name: 1033-A-613-EE  
date: 09-27-12  
title:

EXTERIOR ELEVATION

613

of: 67 A



**NORTHWEST ELEVATION**  
1/8"=1'-0"

A  
A613

**ELEVATION SYMBOL LEGEND:**

- (A) STUCCO, LIGHT SKIP TROWEL FINISH - COLOR TO MATCH "DRYVIT" COLOR: #342 COCONUT SHELL
- (B) STUCCO, LIGHT SKIP TROWEL FINISH - COLOR TO MATCH "DRYVIT" COLOR: #109 EGGSHELL CREAM
- (C) STUCCO, LIGHT SKIP TROWEL FINISH - COLOR TO MATCH "DRYVIT" COLOR: #310 CHINA WHITE
- (1) 1/4" VINYL CONTROL JOINT - "AMICO" PROD. #AMCJX-500 OR EQUAL - ALIGN WITH TOP OF SLAB
- (2) 1" V-STROCK JOINT, SEE 5 / A730 FOR DETAIL
- (3) 2" VINYL REVEAL - "AMICO" PRODUCT #AMSR-500-2000 OR EQUAL
- (4) INDIVIDUALLY ILLUMINATED CHANNEL LETTER EXTERIOR SIGNAGE. PROVIDE JUNCTION BOXES AS REQ'D. NOTE: ALL SIGNAGE TO BE SUBMITTED AS A SEPARATE PERMIT - SHOWN FOR REFERENCE ONLY.
- (5) EXTERIOR LIGHT FIXTURE, SEE ELECTRICAL DWGS.
- (6) PTAC LOUVER, "RELIABLE" - NOA No. 11-0726.03, CUSTOM COLOR TO MATCH ADJACENT MATERIAL
- (7) ALUMINUM MECHANICAL LOUVER CUSTOM COLOR TO MATCH ADJACENT SURFACE
- (8) METAL ROOF SCUPPER SEE ROOF PLANS

**ELEVATION NOTES:**

1. COLORS ARE REFERENCED FROM "DRYVIT" STANDARD COLORS AND ARE TO BE MATCHED USING "SHERWIN-WILLIAMS" PAINT FORMULAS
2. CHANGE IN COLOR OCCURS ON INSIDE CORNER OF CONTROL JOINTS
3. WINDOW FRAMES, PTAC LOUVERS, STOREFRONT, & COPING TO HAVE KYNAR 500 FINISH
4. LOUVERS, GRILLES, AND PIPES TO BE PAINTED TO MATCH ADJACENT MATERIAL COLOR
5. ALL EXTERIOR FLUSH DOORS AND FRAMES, AND LOUVERS AT FIRST FLOOR TO BE PAINTED TO MATCH ADJACENT SURFACE UNLESS NOTED OTHERWISE