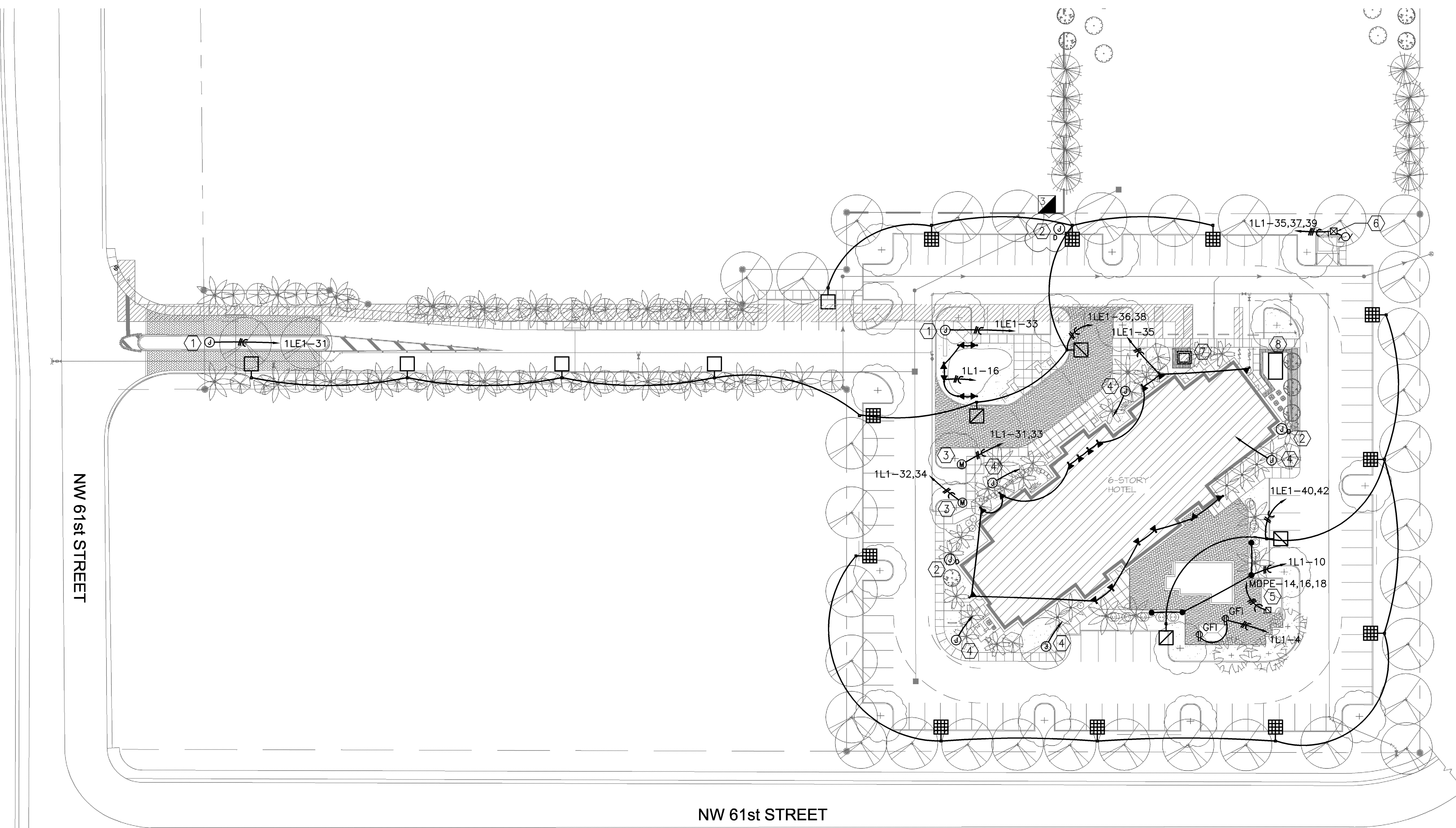
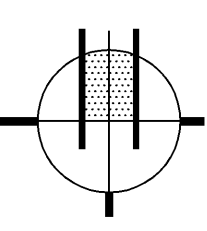


HAMPTON INN & SUITES
Developed By:
Coconut Creek Hospitality Group, LLC
North State Road 7
Coconut Creek, Florida



| KEY NOTES: | |
|------------|---|
| ① | PROVIDE J-BOX FOR SIGN LIGHTING. COORDINATE WITH SIGN LOCATION |
| ② | PROVIDE J-BOX FOR SECURITY CAMERA. PROVIDE ONE 1" C TO HEAD-IN SECURITY EQUIPMENT. COORDINATE LOCATION WITH SECURITY CONSULTANT AND OWNER. |
| ③ | PROVIDE SCHNEIDER CAR CHARGING STATION, EV230PSR (OR APPROVED EQUIVALENT). |
| ④ | PROVIDE WEATHER PROOF J-BOX FOR FUTURE WALKWAY LIGHTING. PROVIDE ONE 3/4" C TO ELECTRICAL ROOM AND STUB 12" AFF UNDER PANEL '1L1' FOR FUTURE CONNECTION TO PANEL. FUTURE WALKWAY LIGHTING REQUIRES A PERMIT BEFORE ANY WIRING INSTALLATION. |
| ⑤ | COORDINATE POOL PANEL LOCATION WITH POOL INSTALLER. PANEL SHALL PROVIDE POWER FOR ALL POOL EQUIPMENT INCLUDING BUT NOT LIMITED TO THE PUMP, POOL LIGHTS, HANDICAPP LIFT, ETC. |
| ⑥ | IRRIGATION PUMP CONTROLLER. COORDINATE LOCATION IN FIELD. |
| ⑦ | PROPOSED FPL PAD MOUNT TRANSFORMER LOCATION. THE CONTRACTOR SHALL BE RESPONSIBLE FOR INSTALLING FPL FURNISHED CONDUIT FOR THE PRIMARY CONDUCTORS FROM THE PRIMARY POINT OF CONNECTION TO THE TRANSFORMER. CONCRETE PAD INSTALLATION, AND COORDINATION WITH FPL FOR THE INSTALLATION OF THE TRANSFORMER. |
| ⑧ | 250KW DIESEL EMERGENCY GENERATOR. |

ELECTRICAL SITE PLAN
1" = 40'-0"



PERMIT SET 09-27-12

NOTE

THESE DRAWINGS ARE PREPARED PER ESTABLISHED INDUSTRY STANDARDS AND REPRESENT THE ENGINEERS DESIGN CONCEPT. THEY ARE NOT INTENDED TO PROVIDE EVERY DETAIL OR CONDITION REQUIRED TO CONSTRUCT THE BUILDING. THE CONTRACTOR THROUGH SUBMITTALS AND OTHER COORDINATION EFFORTS IS FULLY RESPONSIBLE FOR PROVIDING A COMPLETE AND OPERATIONAL BUILDING WHETHER INDICATED ON THE PLANS OR NOT.

| | | |
|------------------|----------------------|-------------------------------------|
| revision: | 06/05/13 | DRC REVISIONS |
| date: | 02/13/13 | DRC REVISIONS - ROUND 2 |
| | 03/11/13 | PERMIT COMMENTS & GENERAL REVISIONS |
| commission: | 11-033/12037 | |
| principal: | DET/AJY | |
| project manager: | DJM | |
| file name: | 12037E-1.1.DWG | |
| date: | 09-27-12 | |
| title: | ELECTRICAL SITE PLAN | |

| | | |
|----|----|---|
| of | 21 | E |
|----|----|---|