



HAMPTON INN & SUITES
Developed By:
Coconut Creek Hospitality Group, LLC
North State Road 7
Coconut Creek, Florida

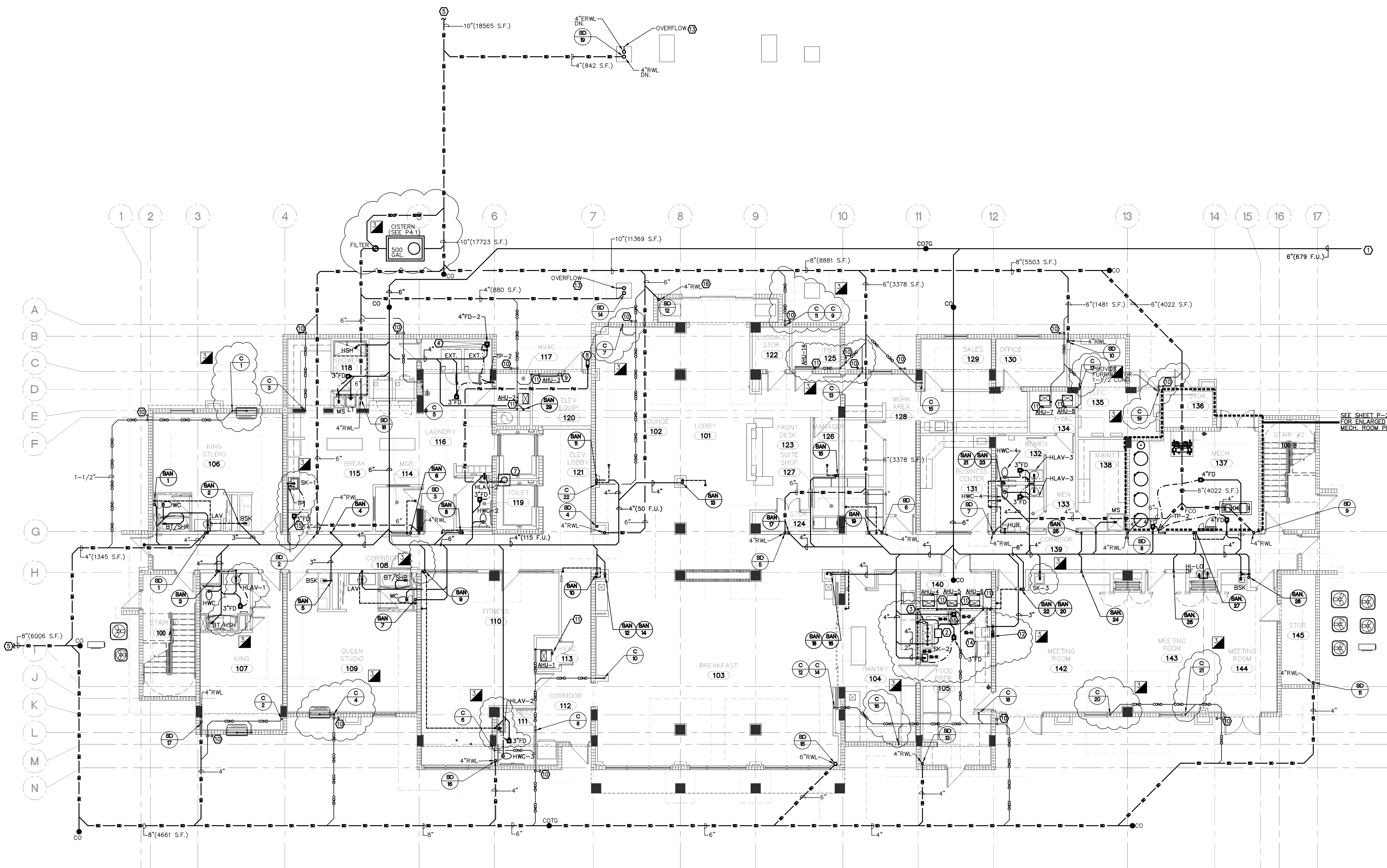
revision:	06/05/13	DRC REVISIONS - ROUND 2
date:	02/13/13	DRC REVISIONS & GENERAL REVISIONS
	03/11/13	PERMIT COMMENTS & GENERAL REVISIONS

commission: 11-033/12037
principal: DET/AJY
project manager: DJM

file name:
12037P-1.1.1.dwg
date: 09-27-12

title:
FIRST FLOOR PLAN PLUMBING

of: 22 P



FIRST FLOOR PLAN - PLUMBING - SANITARY, STORM & CONDENSATE
1/8"=1'-0"

PLAN KEY NOTES

① ROUTE AND CONNECT TO SANITARY LATERAL. SEE CIVIL DRAWINGS FOR CONTINUATION.	⑤ ROUTE AND CONNECT STORM DRAIN LINE TO CATCH BASIN. SEE CIVIL DRAWINGS FOR CONTINUATION.	⑩ 1-1/2" CONDENSATE GOOSENECK RELIEF TIGHT AGAINST EXTERIOR WALL.
② UNDERGROUND GREASE INTERCEPTOR WITH COVER MOUNTED FLUSH WITH FINISH FLOOR. USE CAMPAS ENDURA PART # 3910A02. CONTRACTOR SHALL FIELD COORDINATE EXACT LOCATION WITH OTHER TRADES PRIOR TO THE START OF WORK. MAKE ALL NECESSARY ADJUSTMENTS TO SUIT FIELD CONDITIONS. INSTALLATION SHALL BE IN STRICT CONFORMANCE WITH MANUFACTURER'S REQUIREMENTS.	⑥ TERMINATE WASHER DRAINS ABOVE OPEN TRENCH DRAIN. PROVIDE REMOVABLE LINT SCREEN IN DRAIN. SEE DETAIL ON SHEET P-4.1.	⑪ 3/4" CONDENSATE DRAIN CONNECTION. CONTRACTOR SHALL FIELD COORDINATE EXACT SIZE AND LOCATION WITH MECHANICAL CONTRACTOR PRIOR TO THE START OF WORK.
③ FLOW CONTROL DEVICE AND AIR INTAKE PROVIDED WITH GREASE INTERCEPTOR.	⑦ ELEVATOR SUM PUMP AND PIT. SEE DETAIL ON SHEET P-4.1 FOR SPECIFICATION.	⑫ DRAINAGE BOX FOR DISHWASHER - USE SIOUX CHIEF PART #698-3 OR EQUAL. ROUTE DISHWASHER DRAIN HOSE INTO IT.
④ PROVIDE TRENCH WITH VOLUME OF 12 C.U. FT. DIMENSIONS: 8 FT.(L) X 1 FT.(W) X 1.5 FT.(D). FIELD COORDINATE FINAL DIMENSIONS AND TRENCH LOCATION PRIOR TO THE START OF WORK. MAKE ALL NECESSARY ADJUSTMENTS TO SUIT FIELD CONDITIONS. SEE WASHER TRENCH DRAIN DETAIL ON SHEET P-4.1.	⑧ TERMINATE 2" FORCE MAIN LINE ABOVE CONCRETE SPLASH BLOCK. SEE DETAIL ON SHEET P-4.1.	⑬ TERMINATE 4" OVERFLOW STORM DRAIN LINE ABOVE GRADE.
	⑨ ELEVATOR PUMP CONTROL PANEL AND REMOTE ALARM.	⑭ SEE ARCHITECTURAL PLANS FOR EQUIPMENT LAYOUT AND SCHEDULE.
		⑮ TERMINATE ICE MAKER DRAIN LINE ABOVE FLOOR DRAIN.
		⑯ PROVIDE FURRING FOR RAIN WATER LEADER. SEE ARCHITECTURAL DRAWINGS FOR FURTHER DETAILS.

GENERAL NOTES

- CONTRACTOR SHALL FIELD COORDINATE ALL PLUMBING DRAIN LINE LOCATIONS WITH STRUCTURAL, CIVIL AND LANDSCAPE PLANS PRIOR TO THE START OF WORK. MAKE ALL NECESSARY ADJUSTMENTS TO SUIT FIELD CONDITIONS AND ACCOMMODATE DRAINAGE PIPING.
- PROVIDE PIPE SLEEVE FOR ALL CONDENSATE LINES PENETRATING BEAMS.

PERMIT SET 09-27-12

NOTE

THESE DRAWINGS ARE PREPARED PER ESTABLISHED INDUSTRY STANDARDS AND REPRESENT THE ENGINEER'S DESIGN CONCEPT. THEY ARE NOT INTENDED TO PROVIDE EVERY DETAIL OR CONDITION REQUIRED TO CONSTRUCT THE BUILDING. THE CONTRACTOR THROUGH SUBMITTALS AND OTHER COORDINATION EFFORTS IS FULLY RESPONSIBLE FOR PROVIDING A COMPLETE AND OPERATIONAL BUILDING WHETHER INDICATED ON THE PLANS OR NOT.

